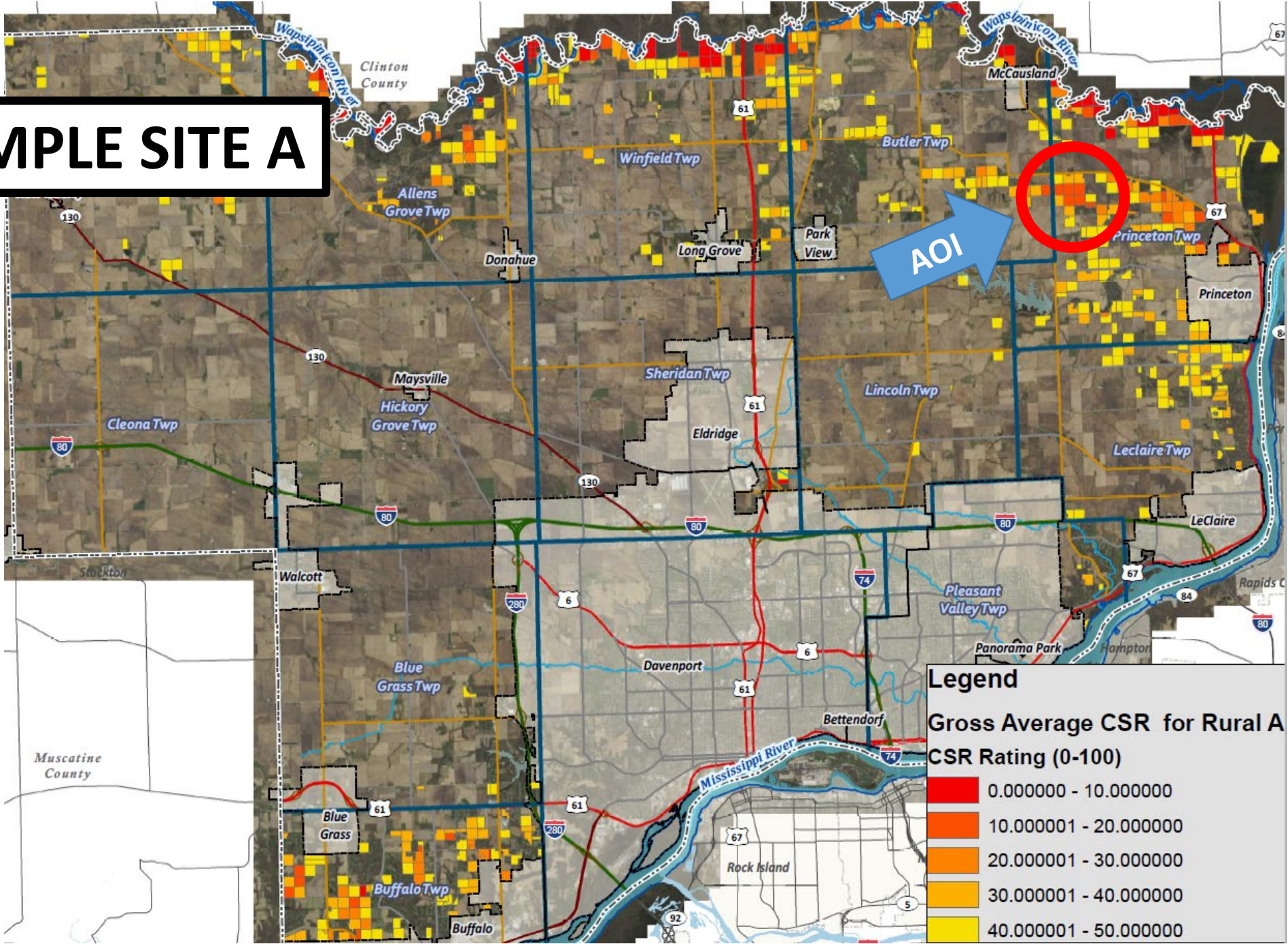
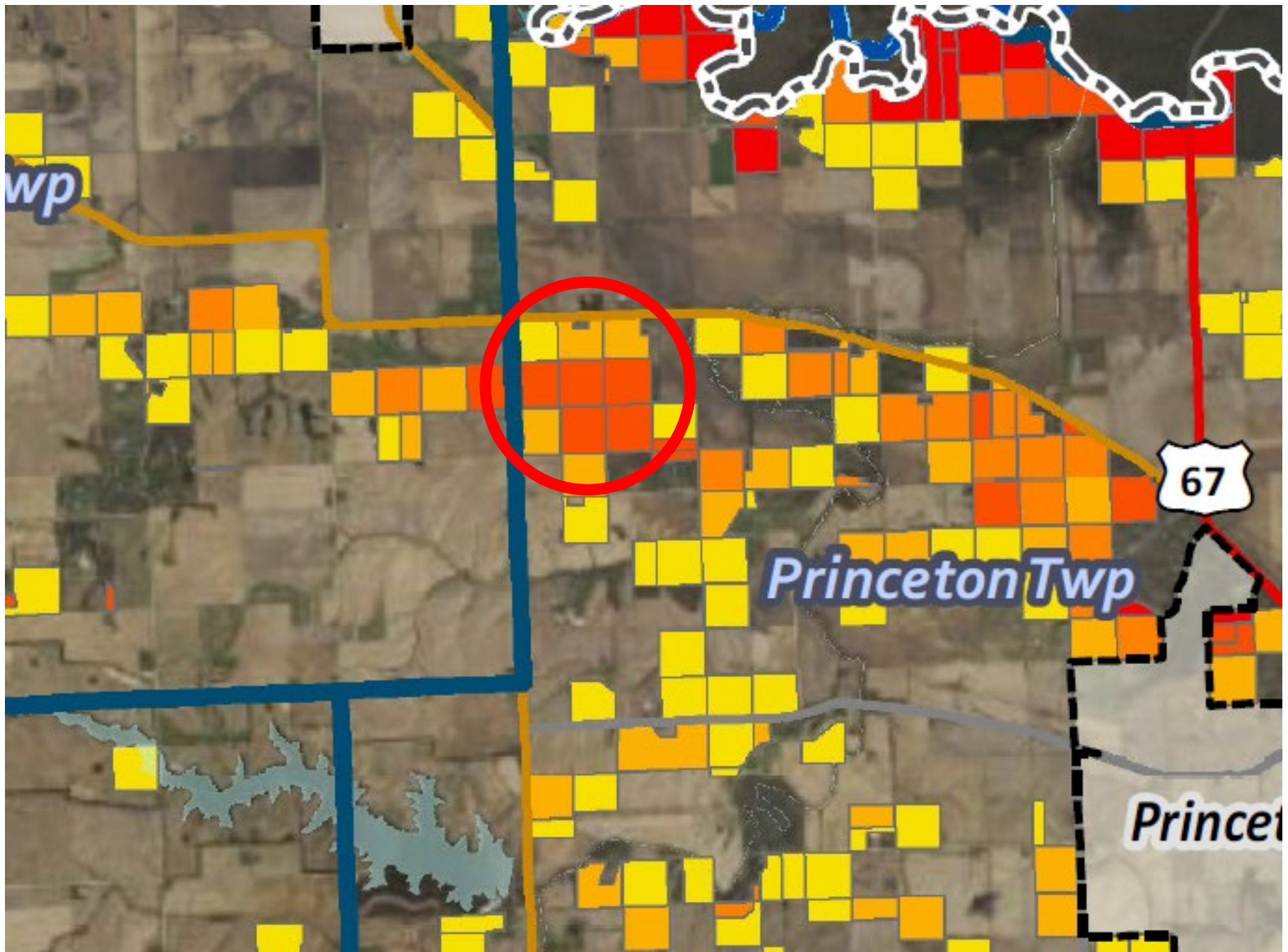


SAMPLE SITE A







Search

Area of Interest Open All Close All

AOI Properties Clear AOI

AOI Information

Name:

Map Unit Symbols: Use Soil Survey Area Map Unit Symbols Use National Map Unit Symbols

Area (acres): 431.6

Soil Data Available from Web Soil Survey

Scott County, Iowa (IA163)

Data Availability: Tabular and Spatial, complete

Tabular Data: Version 28, Sep 15, 2021

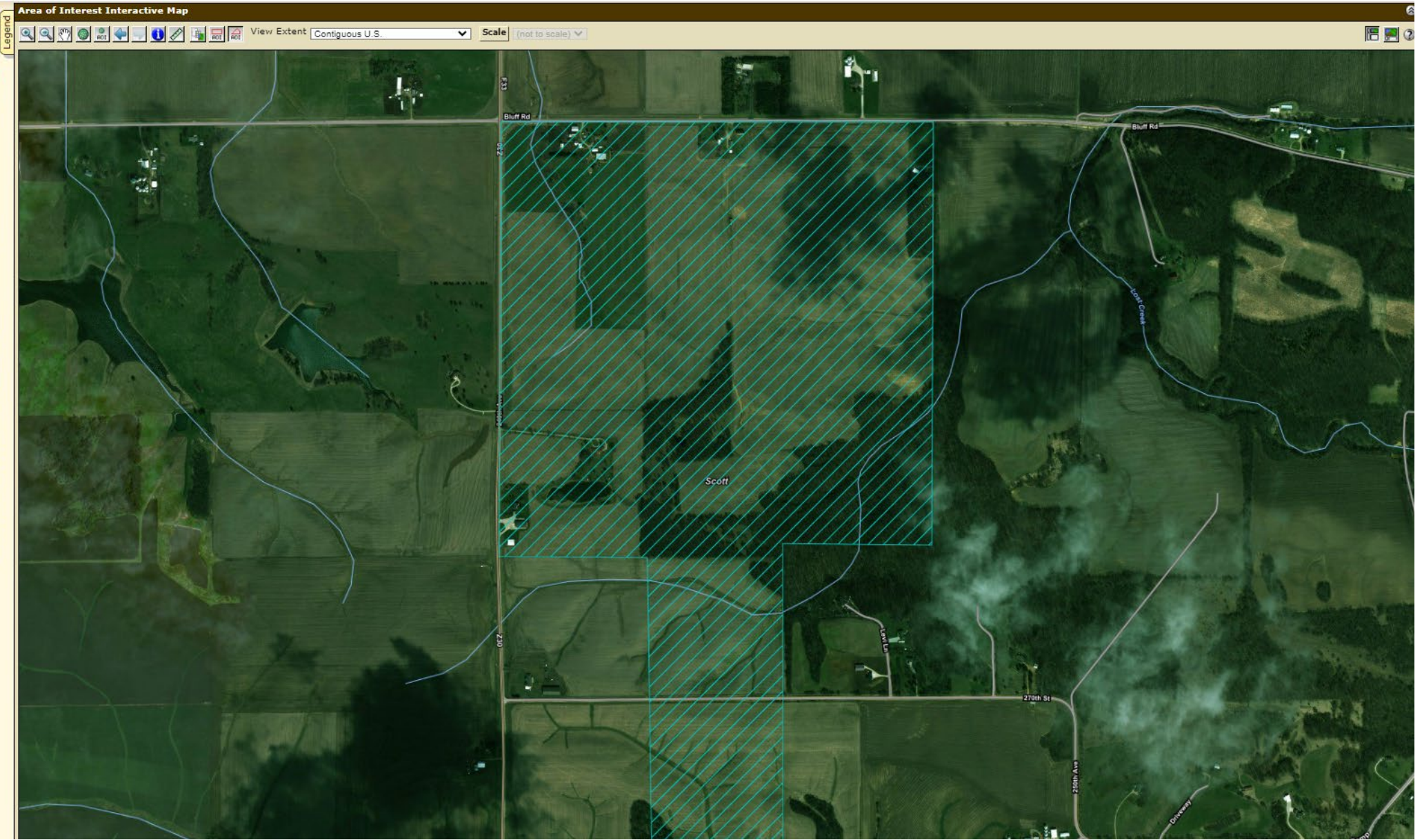
Spatial Data: Version 12, Sep 15, 2021

Clear AOI

Import AOI Export AOI

Quick Navigation

- Address
- State and County
- Soil Survey Area
- Latitude and Longitude or Current Location
- PLSS (Section, Township, Range)
- Bureau of Land Management
- Department of Defense
- Forest Service
- National Park Service
- Hydrologic Unit



Search

Suitabilities and Limitations Ratings

- Open All Close All
- Building Site Development
- Construction Materials
- Disaster Recovery Planning
- Land Classifications
- Land Management
- Military Operations
- Recreational Development
- Sanitary Facilities
- Soil Health

Vegetative Productivity

- Crop Productivity Index
- Forest Productivity (Cubic Feet per Acre per Year)
- Forest Productivity (Tree Site Index)

Iowa Corn Suitability Rating CSR2 (IA)

View Description View Rating

View Options

- Map
- Table
- Description of Rating
- Rating Options Detailed Description

Advanced Options

- Aggregation Method: No Aggregation Necessary
- Tie-break Rule: Lower Higher

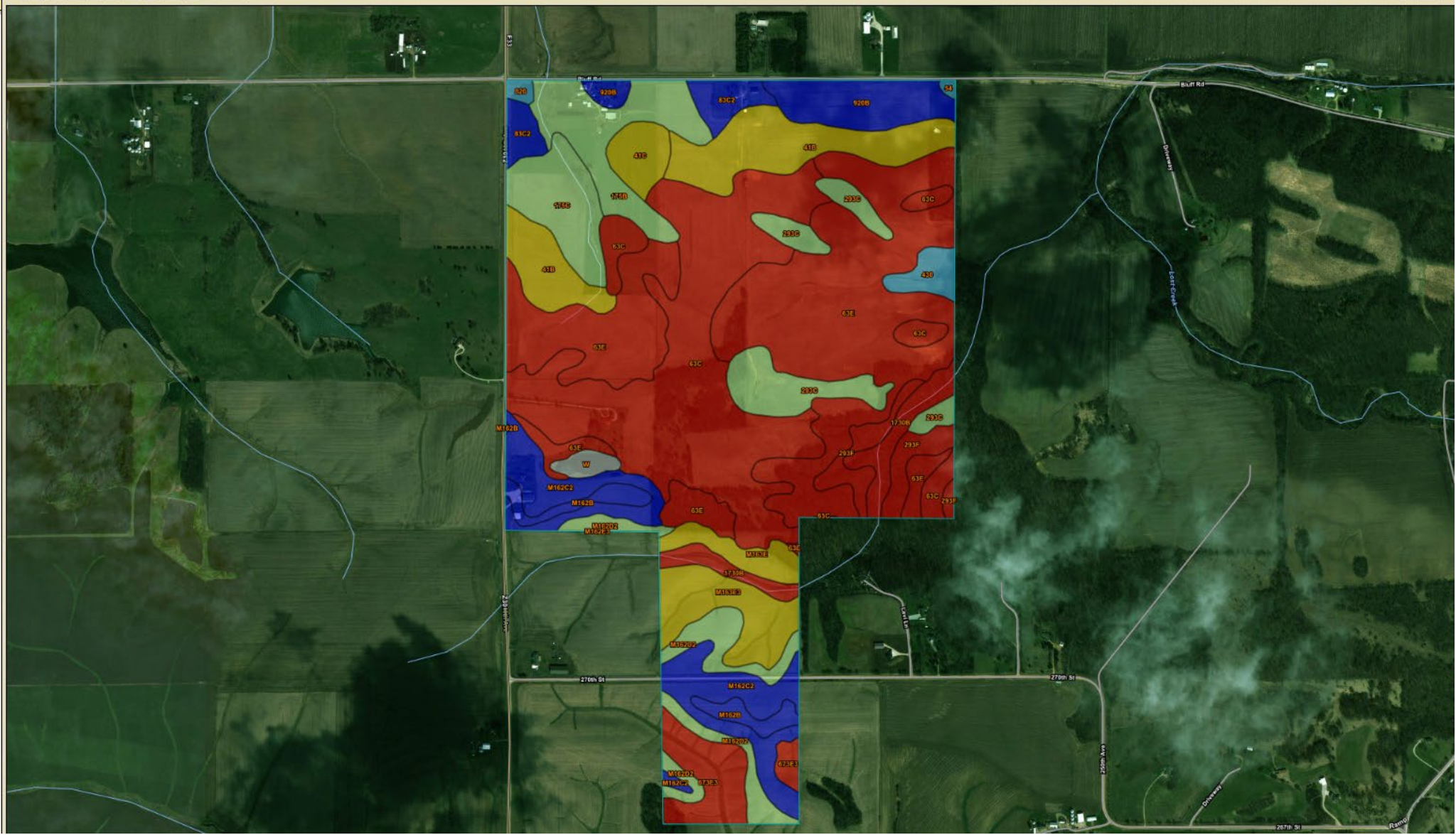
View Description View Rating

- Minnesota Crop Productivity Index
- Range Production (Favorable Year)
- Range Production (Normal Year)
- Range Production (Unfavorable Year)
- Yields of Irrigated Crops (Component)
- Yields of Irrigated Crops (Map Unit)
- Yields of Non-Irrigated Crops (Component)
- Yields of Non-Irrigated Crops (Map Unit)

- Waste Management
- Water Management

Map - Iowa Corn Suitability Rating CSR2 (IA)

Scale (not to scale)

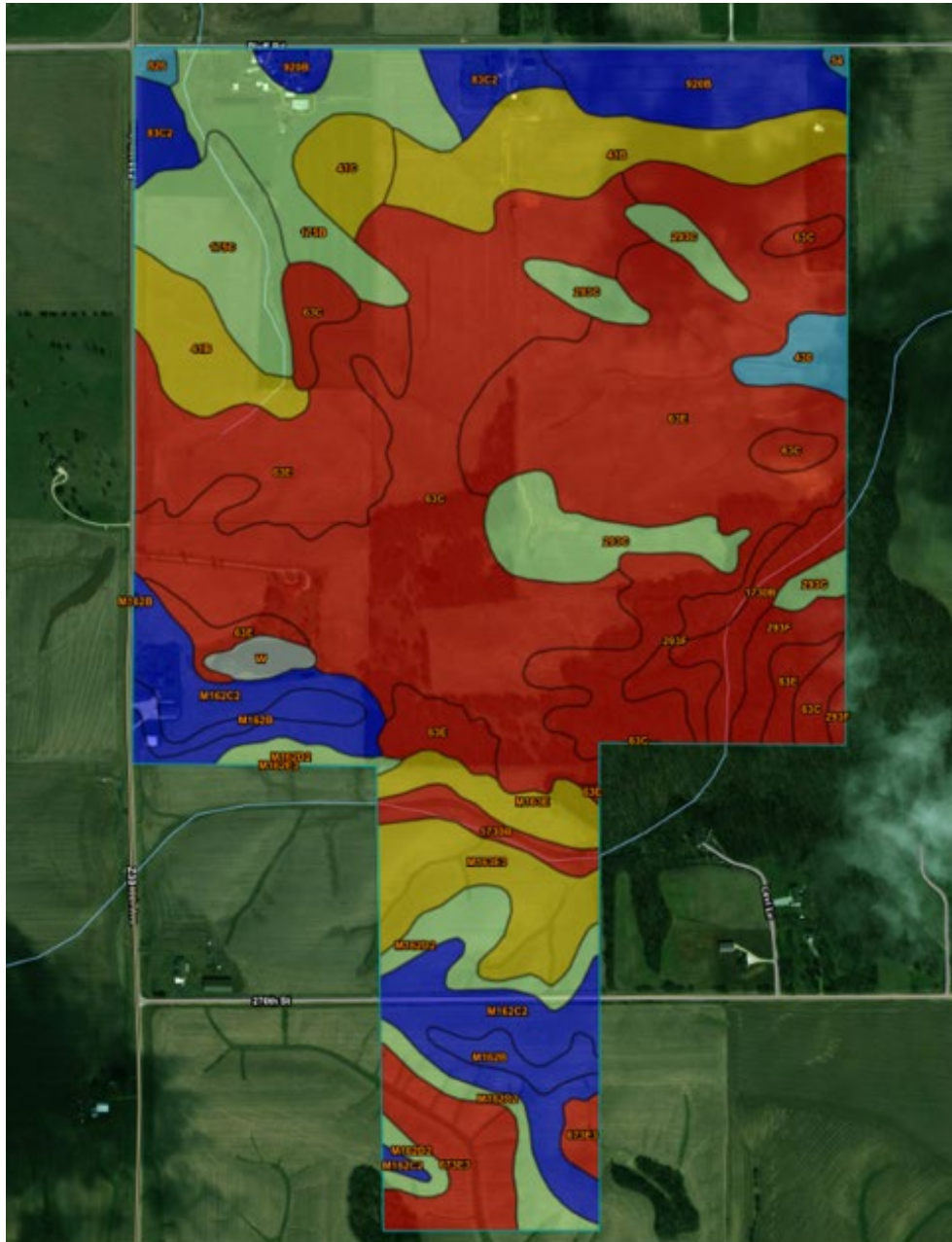


Tables — Iowa Corn Suitability Rating CSR2 (IA) — Summary By Map Unit

Summary by Map Unit — Scott County, Iowa (IA163)

Summary by Map Unit — Scott County, Iowa (IA163)

Map unit symbol	Map unit name	Rating	Acres in AOI	Percent of AOI
41B	Sparta loamy fine sand, 2 to 5 percent slopes	39	32.5	7.5%
41C	Sparta loamy fine sand, 5 to 9 percent slopes	34	6.3	1.5%
54	Zook silty clay loam, 0 to 2 percent slopes	69	0.4	0.1%
63C	Chelsea loamy fine sand, 5 to 9 percent slopes	14	89.9	20.8%
63E	Chelsea loamy fine sand, 9 to 18 percent slopes	5	109.5	25.4%
83C2	Kenyon loam, 5 to 9 percent slopes, eroded	84	8.4	2.0%
175B	Dickinson fine sandy loam, 2 to 5 percent slopes	50	20.5	4.8%
175C	Dickinson fine sandy loam, 5 to 9 percent slopes	45	15.1	3.5%
293C	Chelsea-Fayette-Lamont complex, 5 to 9 percent slopes	44	18.4	4.3%
293F	Chelsea-Fayette-Lamont complex, 18 to 25 percent slopes	11	10.6	2.5%
430	Ackmore silt loam, 0 to 2 percent slopes, occasionally flooded	70	4.3	1.0%
673E3	Timula silt loam, 14 to 18 percent slopes, severely eroded	8	13.0	3.0%
826	Rowley silt loam, 0 to 2 percent slopes	76	1.0	0.2%
920B	Tama silt loam, sandy substratum, 2 to 5 percent slopes	92	15.8	3.7%
1730B	Nodaway-Perks complex, channeled, 0 to 5 percent slopes	21	10.9	2.5%
M162B	Downs silt loam, till plain, 2 to 5 percent slopes	90	7.4	1.7%
M162C2	Downs silt loam, till plain, 5 to 9 percent slopes, eroded	82	28.1	6.5%
M162D2	Downs silt loam, till plain, 9 to 14 percent slopes, eroded	57	15.7	3.6%
M162E3	Downs silty clay loam, till plains, 14 to 18 percent slopes, severely eroded	39	0.0	0.0%
M163E	Fayette silt loam, till plain, 14 to 18 percent slopes	39	6.4	1.5%
M163E3	Fayette silty clay loam, till plain, 14 to 18 percent slopes, severely eroded	29	14.8	3.4%
W	Water		2.4	0.6%
Totals for Area of Interest			431.6	100.0%



Calculating a Weighted Average Corn Suitability Rating 2

Ag Decision Maker -- Iowa State University Extension and Outreach

Use this spreadsheet to calculate the weighted average CSR2 for a tract of land using data from the [NRCS Web Soil Survey](#). To learn more about this spreadsheet see Information File C2-87, [Computing the Corn Suitability Rating for Your Farm](#), or, view the [video](#) walking through Web Soil Survey.

Place the cursor over cells with red triangles to read comments.

Enter your input values in shaded cells.

Owner's Name	Princeton Site		
Farm Name	Princeton Site		
Location	Scott County, Iowa		
Legal Description	Princeton Twp		
Total Acres			432
Cropland Acres			432

Map Unit Symbol *	Soil Type	Corn Suitability Rating 2	Acres in AOI **	Percent of AOI ***	Total Rating by Soil Type
41B		39	32.5	7.53%	1,268
41C		34	6.3	1.46%	214
54		69	0.4	0.09%	28
63C		14	89.9	20.84%	1,259
63E		5	109.5	25.38%	548
83C2		84	8.4	1.95%	706
175B		50	20.5	4.75%	1,025
175C		45	15.1	3.50%	680
293C		44	18.4	4.27%	810
293F		11	10.6	2.46%	117
430		70	4.3	1.00%	301
673E3		8	13	3.01%	104
826		76	1	0.23%	76
920B		92	15.8	3.66%	1,454
1730B		21	10.9	2.53%	229
M162B		90	7.4	1.72%	666
M162C2		82	28.1	6.51%	2,304
M162D2		57	15.7	3.64%	895
M163E		39	6.4	1.48%	250
M163E3		29	14.8	3.43%	429
W		0	2.4	0.56%	0
			431.4	100.0%	13,359

Weighted Average Corn Suitability Rating 2 (CSR2) (per acre)

31.0

Search

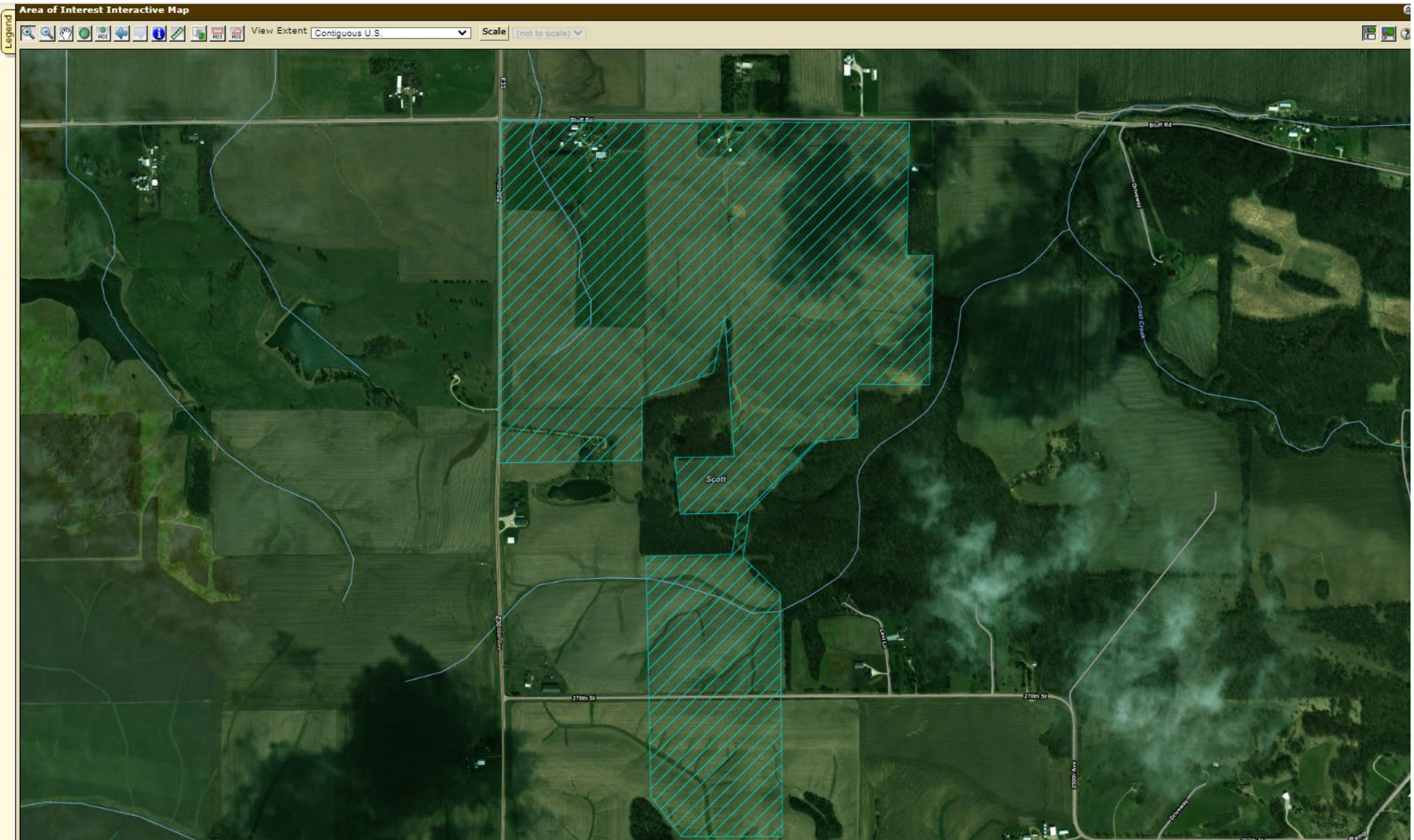
Area of Interest

Open All Close All

- AOI Properties
- Import AOI
- Export AOI

Quick Navigation

- Address
- State and County
- Soil Survey Area
- Latitude and Longitude or Current Location
- PLSS (Section, Township, Range)
- Bureau of Land Management
- Department of Defense
- Forest Service
- National Park Service
- Hydrologic Unit



Search

Suitabilities and Limitations Ratings

Open All Close All

- Building Site Development
- Construction Materials
- Disaster Recovery Planning
- Land Classifications
- Land Management
- Military Operations
- Recreational Development
- Sanitary Facilities
- Soil Health

Vegetative Productivity

- Crop Productivity Index
- Forest Productivity (Cubic Feet per Acre per Year)
- Forest Productivity (Tree Site Index)

Iowa Corn Suitability Rating CSR2 (IA)

View Description View Rating

View Options

- Map
- Table
- Description of Rating
- Rating Options
- Detailed Description

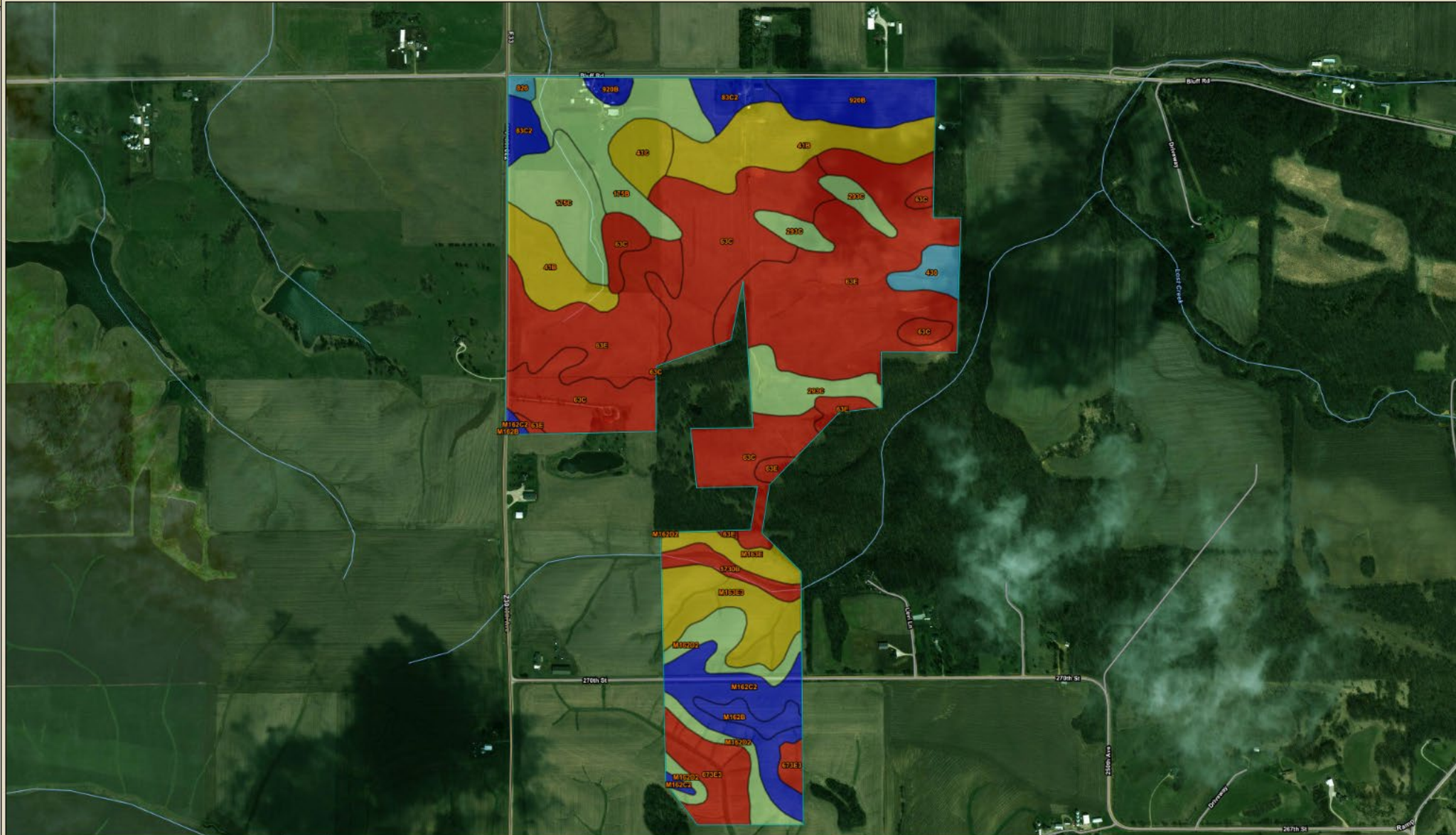
Advanced Options

View Description View Rating

- Minnesota Crop Productivity Index
- Range Production (Favorable Year)
- Range Production (Normal Year)
- Range Production (Unfavorable Year)
- Yields of Irrigated Crops (Component)
- Yields of Irrigated Crops (Map Unit)
- Yields of Non-Irrigated Crops (Component)
- Yields of Non-Irrigated Crops (Map Unit)
- Waste Management
- Water Management

Map - Iowa Corn Suitability Rating CSR2 (IA)

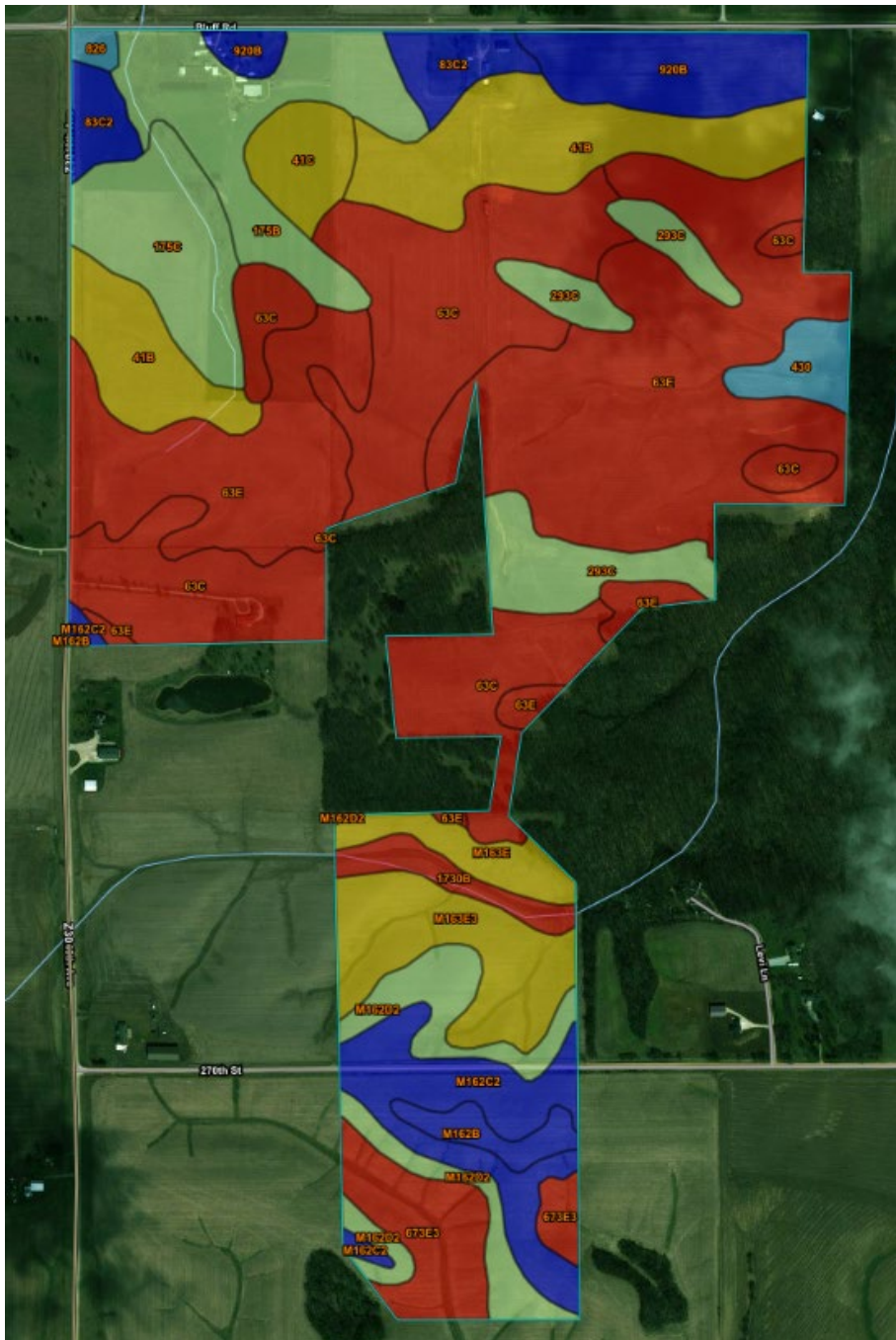
Map navigation toolbar: pan, zoom in, zoom out, home, print, scale: (not to scale)



Summary by Map Unit — Scott County, Iowa (IA163)

Summary by Map Unit — Scott County, Iowa (IA163)

Map unit symbol	Map unit name	Rating	Acres in AOI	Percent of AOI
41B	Sparta loamy fine sand, 2 to 5 percent slopes	39	31.2	9.4%
41C	Sparta loamy fine sand, 5 to 9 percent slopes	34	6.3	1.9%
63C	Chelsea loamy fine sand, 5 to 9 percent slopes	14	63.7	19.3%
63E	Chelsea loamy fine sand, 9 to 18 percent slopes	5	82.7	25.0%
83C2	Kenyon loam, 5 to 9 percent slopes, eroded	84	8.3	2.5%
175B	Dickinson fine sandy loam, 2 to 5 percent slopes	50	20.4	6.2%
175C	Dickinson fine sandy loam, 5 to 9 percent slopes	45	15.1	4.6%
293C	Chelsea-Fayette-Lamont complex, 5 to 9 percent slopes	44	14.4	4.4%
430	Ackmore silt loam, 0 to 2 percent slopes, occasionally flooded	70	4.3	1.3%
673E3	Timula silt loam, 14 to 18 percent slopes, severely eroded	8	11.9	3.6%
826	Rowley silt loam, 0 to 2 percent slopes	76	1.0	0.3%
920B	Tama silt loam, sandy substratum, 2 to 5 percent slopes	92	14.1	4.3%
1730B	Nodaway-Perks complex, channeled, 0 to 5 percent slopes	21	4.1	1.2%
M162B	Downs silt loam, till plain, 2 to 5 percent slopes	90	3.5	1.1%
M162C2	Downs silt loam, till plain, 5 to 9 percent slopes, eroded	82	16.2	4.9%
M162D2	Downs silt loam, till plain, 9 to 14 percent slopes, eroded	57	13.2	4.0%
M163E	Fayette silt loam, till plain, 14 to 18 percent slopes	39	5.3	1.6%
M163E3	Fayette silty clay loam, till plain, 14 to 18 percent slopes, severely eroded	29	14.8	4.5%
Totals for Area of Interest			330.4	100.0%



Calculating a Weighted Average Corn Suitability Rating 2

Ag Decision Maker -- Iowa State University Extension and Outreach

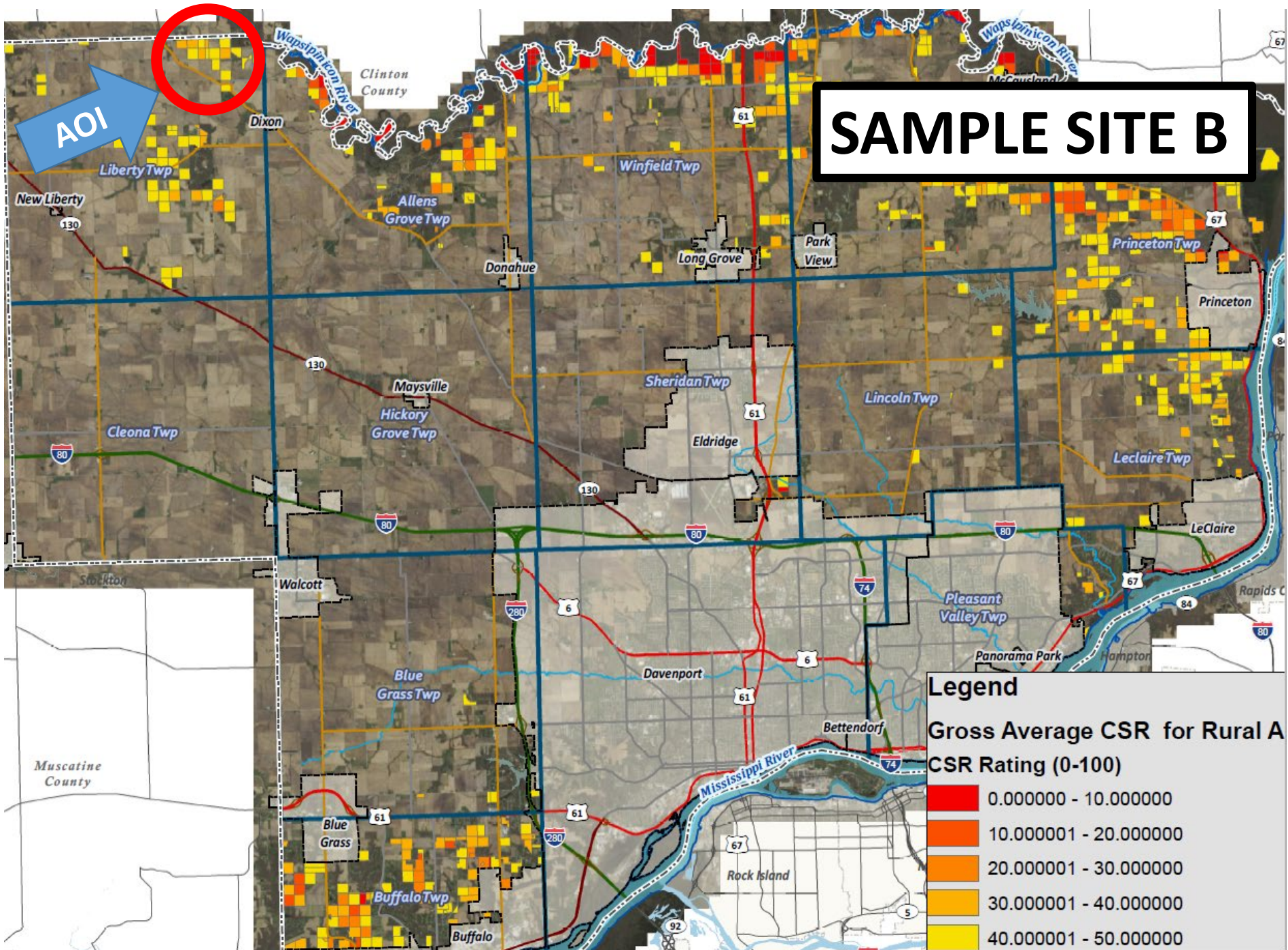
Use this spreadsheet to calculate the weighted average CSR2 for a tract of land using data from the [NRCS Web Soil Survey](#). To learn more about this spreadsheet see Information File C2-87, [Computing the Corn Suitability Rating for Your Farm](#), or, view the [video](#) walking through Web Soil Survey.

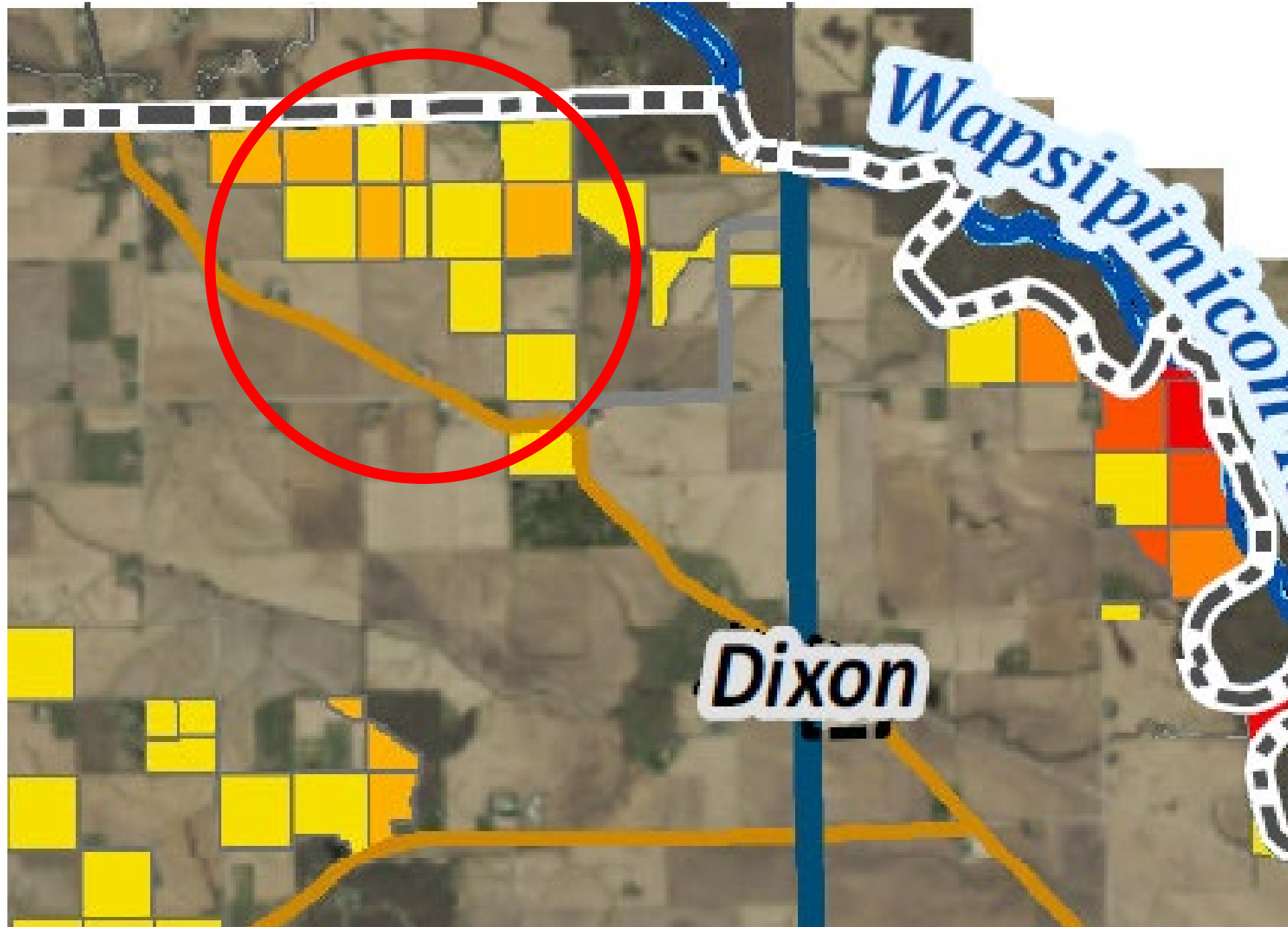
Place the cursor over cells with red triangles to read comments.
 Enter your input values in shaded cells.

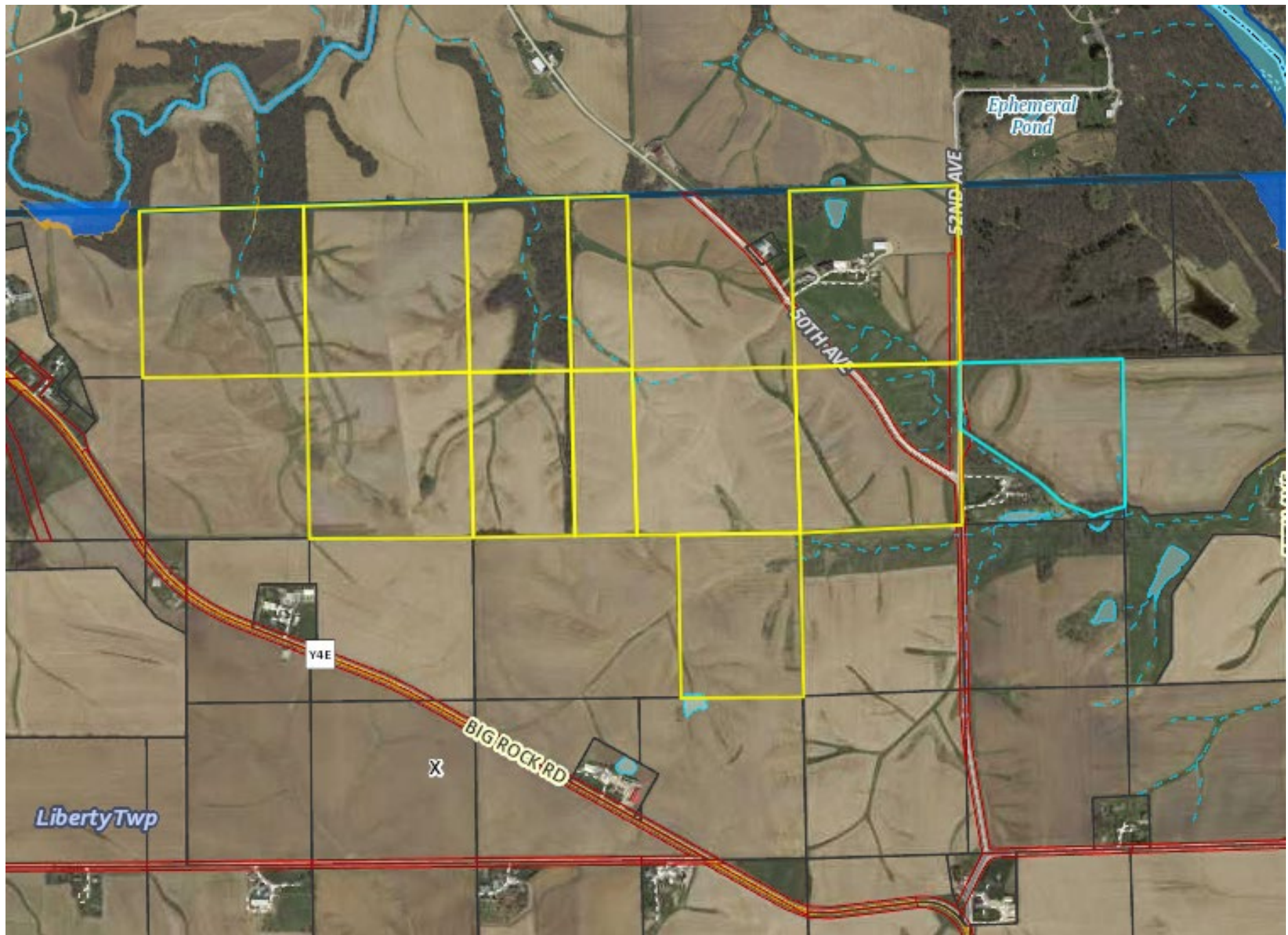
Owner's Name	Princeton Site		
Farm Name	Princeton Site		
Location	Scott County, Iowa		
Legal Description	Princeton Twp		
Total Acres			432
Cropland Acres			432

Map Unit Symbol *	Soil Type	Corn Suitability Rating 2	Acres in AOI **	Percent of AOI ***	Total Rating by Soil Type
41B		39	31.2	9.44%	1,217
41C		34	6.3	1.91%	214
63C		14	63.7	19.27%	892
63E		5	82.7	25.02%	414
83C2		84	8.3	2.51%	697
175B		50	20.4	6.17%	1,020
175C		45	15.1	4.57%	680
293C		44	14.4	4.36%	634
430		70	4.3	1.30%	301
673E3		8	11.9	3.60%	95
826		76	1	0.30%	76
920B		92	14.1	4.27%	1,297
1730B		21	4.1	1.24%	86
M162B		90	3.5	1.06%	315
M162C2		82	16.2	4.90%	1,328
M162D2		57	13.2	3.99%	752
M163E		39	5.3	1.60%	207
M163E3		29	14.8	4.48%	429
				0.00%	0
				0.00%	0
				0.00%	0
			330.5	100.0%	10,654

Weighted Average Corn Suitability Rating 2 (CSR2) (per acre) 32.2







Search

Area of Interest

Open All | Close All

AOI Properties

Clear AOI

AOI Information

Name

Map Unit Symbols
Use Soil Survey Area Map Unit Symbols
Use National Map Unit Symbols

Table with 2 columns: Area (acres), Value. Rows: Clinton County, Iowa (5.91), Scott County, Iowa (390.7), Total (396.6)

Soil Data Available from Web Soil Survey

Clinton County, Iowa (IA045)

Data Availability: Tabular and Spatial, complete
Tabular Data: Version 25, Sep 14, 2021
Spatial Data: Version 12, Sep 14, 2019

Scott County, Iowa (IA163)

Data Availability: Tabular and Spatial, complete
Tabular Data: Version 28, Sep 15, 2021
Spatial Data: Version 12, Sep 15, 2021

Clear AOI

Import AOI

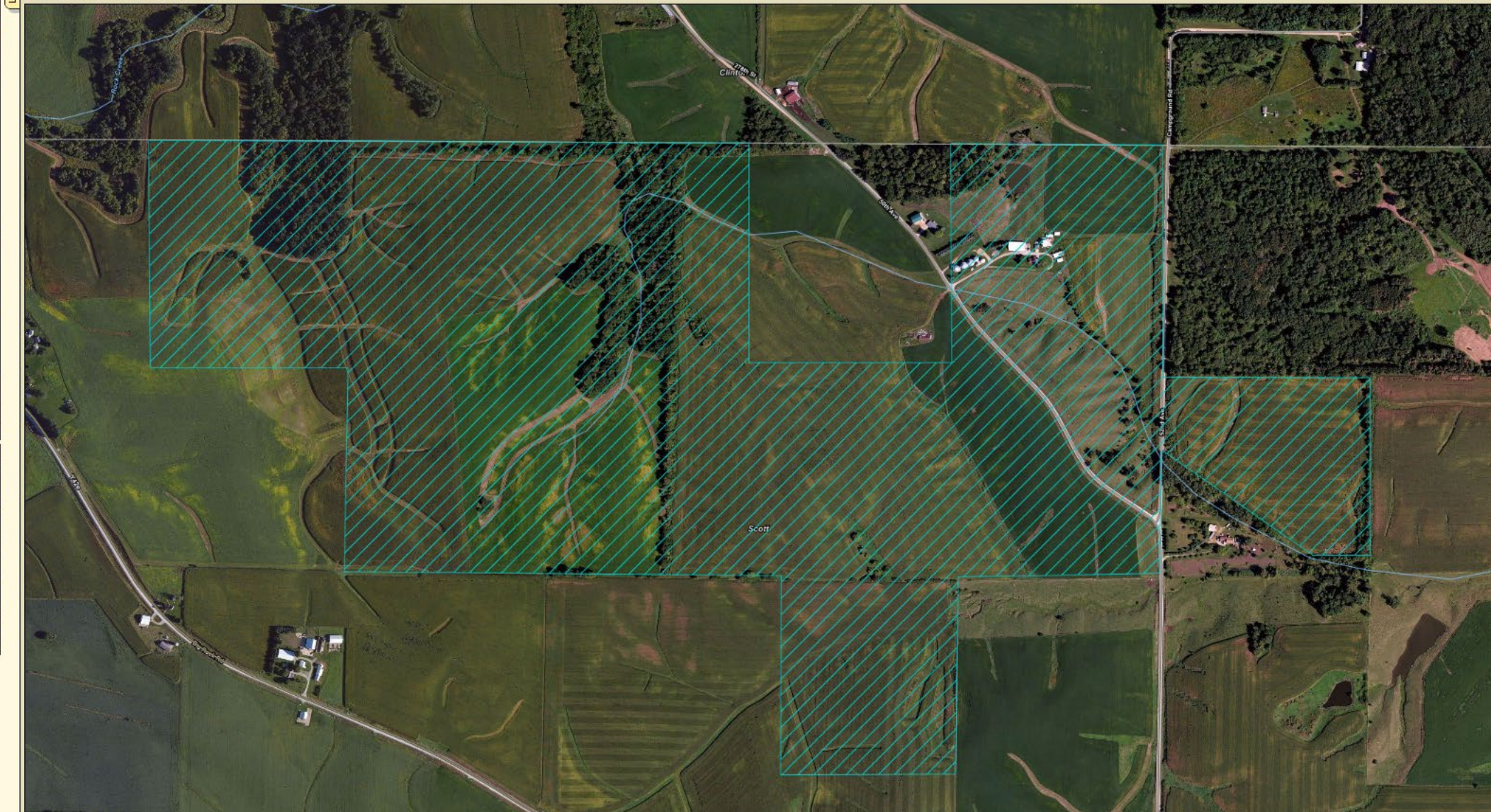
Export AOI

Quick Navigation

- Address
State and County
Soil Survey Area
Latitude and Longitude or Current Location
PLSS (Section, Township, Range)
Bureau of Land Management
Department of Defense
Forest Service
National Park Service
Hydrologic Unit

Area of Interest Interactive Map

Map navigation icons, View Extent: Contiguous U.S., Scale: (not to scale)



Search

Suitabilities and Limitations Ratings

- Open All Close All
- Building Site Development
- Construction Materials
- Disaster Recovery Planning
- Land Classifications
- Land Management
- Military Operations
- Recreational Development
- Sanitary Facilities
- Soil Health

Vegetative Productivity

- Crop Productivity Index
- Forest Productivity (Cubic Feet per Acre per Year)
- Forest Productivity (Tree Site Index)

Iowa Corn Suitability Rating CSR2 (IA)

View Description View Rating

View Options

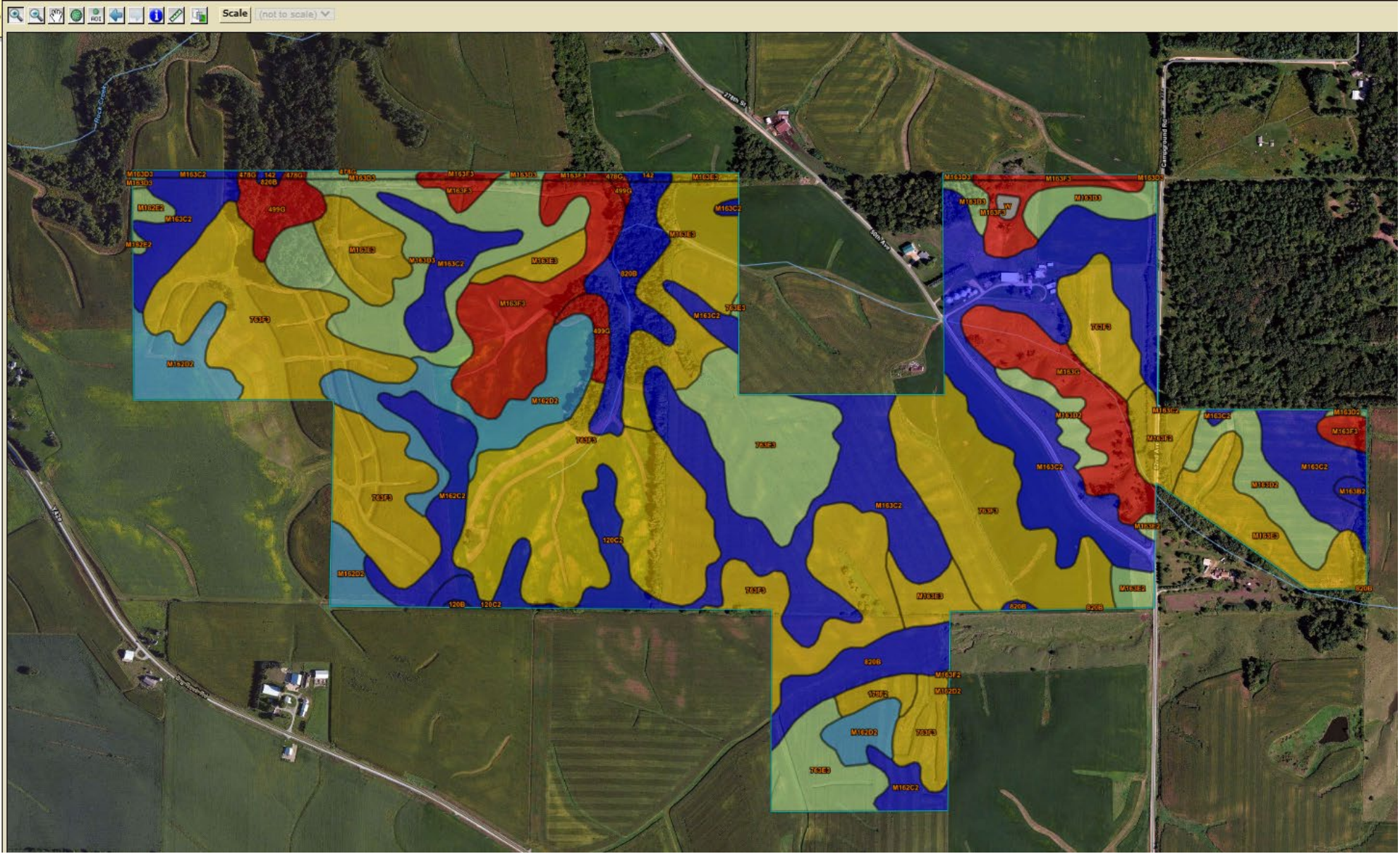
- Map
- Table
- Description of Rating
- Rating Options
 - Detailed Description

Advanced Options

View Description View Rating

- Minnesota Crop Productivity Index
- Range Production (Favorable Year)
- Range Production (Normal Year)
- Range Production (Unfavorable Year)
- Yields of Irrigated Crops (Component)
- Yields of Irrigated Crops (Map Unit)
- Yields of Non-Irrigated Crops (Component)
- Yields of Non-Irrigated Crops (Map Unit)
- Waste Management
- Water Management

Map - Iowa Corn Suitability Rating CSR2 (IA)



Summary by Map Unit — Clinton County, Iowa (IA045)
 Summary by Map Unit — Scott County, Iowa (IA163)

Summary by Map Unit — Clinton County, Iowa (IA045)

Map unit symbol	Map unit name	Rating	Acres in AOI	Percent of AOI
142	Chaseburg silt loam, moderately well drained, 0 to 2 percent slopes	79	0.6	0.2%
478G	Rock outcrop-Nordness complex, 18 to 60 percent slopes	5	0.5	0.1%
M163C2	Fayette silt loam, till plain, 5 to 9 percent slopes, eroded	76	0.6	0.2%
M163D3	Fayette silty clay loam, till plain, 9 to 14 percent slopes, severely eroded	41	1.5	0.4%
M163E3	Fayette silty clay loam, till plain, 14 to 18 percent slopes, severely eroded	29	0.6	0.1%
M163F3	Fayette silty clay loam, till plain, 18 to 25 percent slopes, severely eroded	12	2.1	0.5%
Subtotals for Soil Survey Area			5.9	1.5%

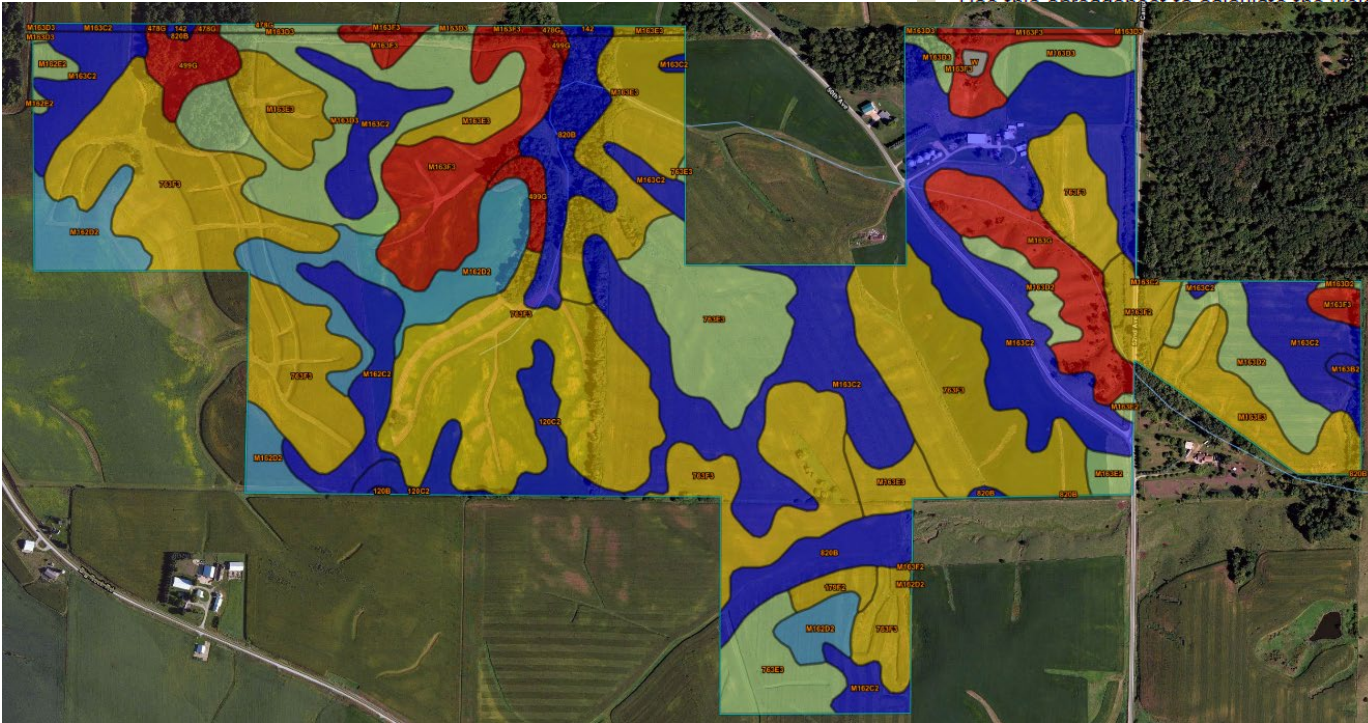
Summary by Map Unit — Scott County, Iowa (IA163)

Map unit symbol	Map unit name	Rating	Acres in AOI	Percent of AOI
120B	Tama silty clay loam, 2 to 5 percent slopes	95	0.1	0.0%
120C2	Tama silty clay loam, 5 to 9 percent slopes, eroded	87	6.9	1.7%
179F2	Gara loam, 18 to 25 percent slopes, moderately eroded	17	1.9	0.5%
499G	Nordness silt loam, 18 to 40 percent slopes	5	6.0	1.5%
763E3	Exette silt loam, 14 to 18 percent slopes, severely eroded	39	23.2	5.8%
763F3	Exette silt loam, 18 to 25 percent slopes, severely eroded	21	113.3	28.6%
820B	Dockery silt loam, 2 to 5 percent slopes	83	16.1	4.1%
M162C2	Downs silt loam, till plain, 5 to 9 percent slopes, eroded	82	10.2	2.6%
M162D2	Downs silt loam, till plain, 9 to 14 percent slopes, eroded	57	25.1	6.3%
M162E2	Downs silt loam, till plain, 14 to 18 percent slopes, eroded	45	1.3	0.3%
M163B2	Fayette silt loam, till plain, 2 to 5 percent slopes, eroded	81	0.7	0.2%
M163C2	Fayette silt loam, till plain, 5 to 9 percent slopes, eroded	76	77.8	19.6%
M163D2	Fayette silt loam, till plain, 9 to 14 percent slopes, eroded	47	9.7	2.4%
M163D3	Fayette silty clay loam, till plain, 9 to 14 percent slopes, severely eroded	41	24.3	6.1%
M163E2	Fayette silt loam, till plain, 14 to 18 percent slopes, eroded	36	1.9	0.5%
M163E3	Fayette silty clay loam, till plain, 14 to 18 percent slopes, severely eroded	29	35.0	8.8%
M163F2	Fayette silt loam, till plain, 18 to 25 percent slopes, eroded	18	4.5	1.1%
M163F3	Fayette silty clay loam, till plain, 18 to 25 percent slopes, severely eroded	12	20.9	5.3%
M163G	Fayette silt loam, till plain, 25 to 40 percent slopes	5	11.4	2.9%
W	Water		0.4	0.1%
Subtotals for Soil Survey Area			390.7	98.5%
Totals for Area of Interest			396.6	100.0%

Calculating a Weighted Average Corn Suitability Rating 2

Ag Decision Maker -- Iowa State University Extension and Outreach

Use this spreadsheet to calculate the weighted average CSR2 for a tract of land using data from the [NRCS Web Soil Survey](#) information File C2-87, [Computing the Corn Suitability Rating for Your Farm](#), Web Soil Survey.



to read comments.

407
407

Soil Type	Corn Suitability Rating 2	Acres in AOI **	Percent of AOI ***	Total Rating by Soil Type
	79	0.6	0.15%	47
	5	0.5	0.12%	3
	76	78.4	19.24%	5,958
	41	25.8	6.33%	1,058
	29	35.6	8.74%	1,032
	12	23	5.64%	276
	5	11.4	2.80%	57
	87	6.9	1.69%	600
	17	1.9	0.47%	32
	5	6	1.47%	30
	39	23.2	5.69%	905
	21	113.3	27.80%	2,379
	83	16.1	3.95%	1,336
	82	10.2	2.50%	836
	57	25.1	6.16%	1,431
	45	1.3	0.32%	59
	81	0.7	0.17%	57
	47	9.7	2.38%	456
	36	1.9	0.47%	68
	18	4.5	1.10%	81
	0	11.4	2.80%	0
		407.5	100.0%	16,702

Weighted Average Corn Suitability Rating 2 (CSR2) (per acre) 41.0

Search

Area of Interest

Open All Close All

AOI Properties

Clear AOI

AOI Information

Name

- Use Soil Survey Area Map Unit Symbols
- Use National Map Unit Symbols

Area (acres)	Clinton County, Iowa	1.22
	Scott County, Iowa	328.4
	Total	329.6

Soil Data Available from Web Soil Survey

Clinton County, Iowa (IA045)

- Data Availability: Tabular and Spatial, complete
- Tabular Data: Version 25, Sep 14, 2021
- Spatial Data: Version 12, Sep 14, 2019

Scott County, Iowa (IA163)

- Data Availability: Tabular and Spatial, complete
- Tabular Data: Version 28, Sep 15, 2021
- Spatial Data: Version 12, Sep 15, 2021

Clear AOI

Import AOI

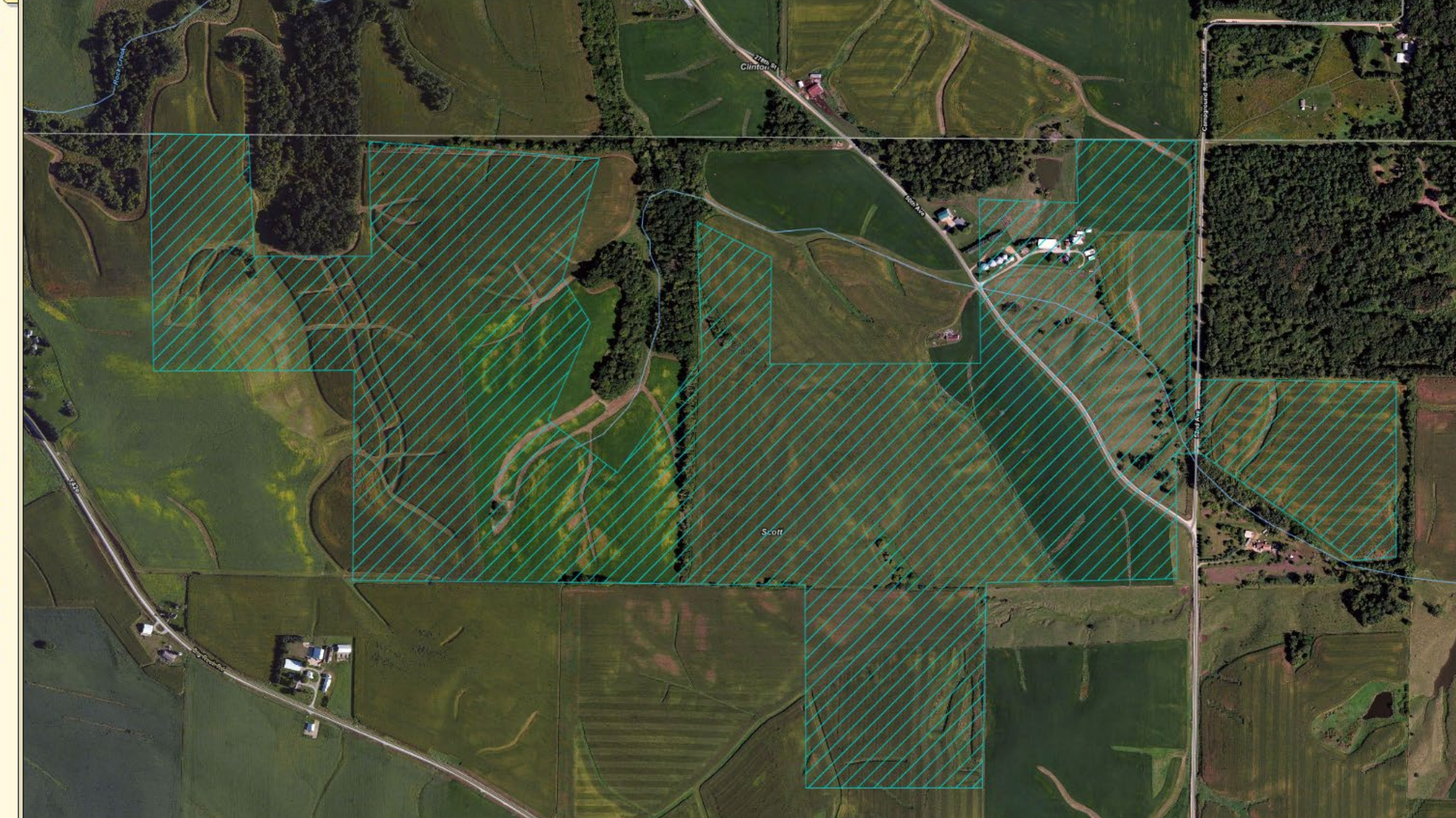
Export AOI

Quick Navigation

- Address
- State and County
- Soil Survey Area
- Latitude and Longitude or Current Location
- PLSS (Section, Township, Range)
- Bureau of Land Management
- Department of Defense
- Forest Service
- National Park Service
- Hydrologic Unit

Area of Interest Interactive Map

Legend View Extent: Contiguous U.S. Scale: (not to scale)



Search

Suitabilities and Limitations Ratings

Open All Close All

- Building Site Development
- Construction Materials
- Disaster Recovery Planning
- Land Classifications
- Land Management
- Military Operations
- Recreational Development
- Sanitary Facilities
- Soil Health

Vegetative Productivity

- Crop Productivity Index
- Forest Productivity (Cubic Feet per Acre per Year)
- Forest Productivity (Tree Site Index)

Iowa Corn Suitability Rating CSR2 (IA)

View Description View Rating

View Options

- Map
- Table
- Description of Rating
- Rating Options Detailed Description

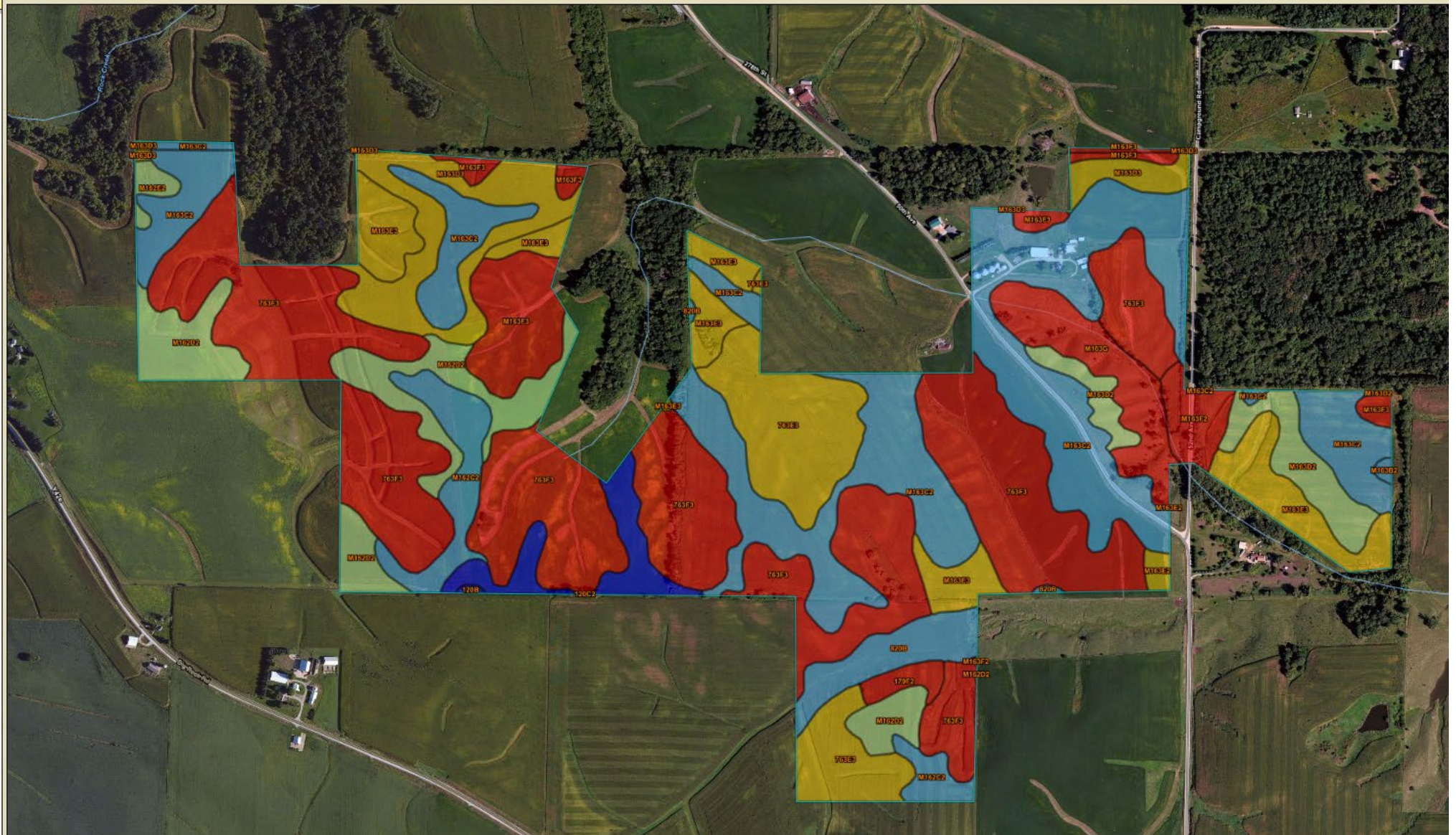
Advanced Options

View Description View Rating

- Minnesota Crop Productivity Index
- Range Production (Favorable Year)
- Range Production (Normal Year)
- Range Production (Unfavorable Year)
- Yields of Irrigated Crops (Component)
- Yields of Irrigated Crops (Map Unit)
- Yields of Non-Irrigated Crops (Component)
- Yields of Non-Irrigated Crops (Map Unit)
- Waste Management
- Water Management

Map - Iowa Corn Suitability Rating CSR2 (IA)

Scale (not to scale)



Tables — Iowa Corn Suitability Rating CSR2 (IA) — Summary By Map Unit

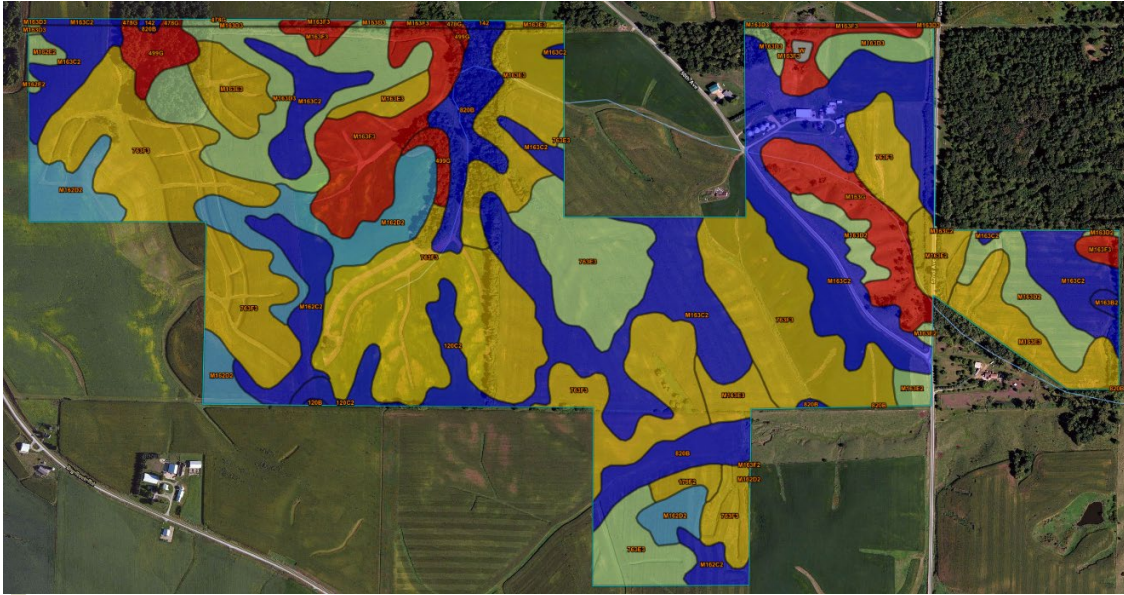
Summary by Map Unit — Clinton County, Iowa (IA045)
 Summary by Map Unit — Scott County, Iowa (IA163)

Summary by Map Unit — Clinton County, Iowa (IA045)

Map unit symbol	Map unit name	Rating	Acres in AOI	Percent of AOI
M163C2	Fayette silt loam, till plain, 5 to 9 percent slopes, eroded	76	0.6	0.2%
M163D3	Fayette silty clay loam, till plain, 9 to 14 percent slopes, severely eroded	41	0.2	0.1%
M163F3	Fayette silty clay loam, till plain, 18 to 25 percent slopes, severely eroded	12	0.4	0.1%
Subtotals for Soil Survey Area			1.2	0.4%

Summary by Map Unit — Scott County, Iowa (IA163)

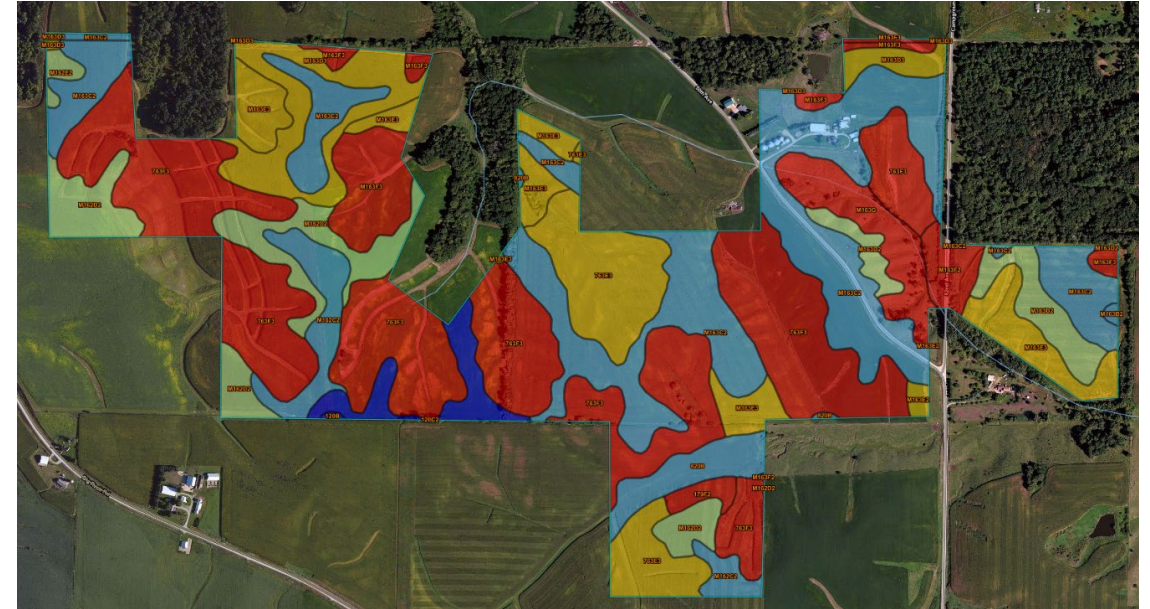
Map unit symbol	Map unit name	Rating	Acres in AOI	Percent of AOI
120B	Tama silty clay loam, 2 to 5 percent slopes	95	0.2	0.0%
120C2	Tama silty clay loam, 5 to 9 percent slopes, eroded	87	6.9	2.1%
179F2	Gara loam, 18 to 25 percent slopes, moderately eroded	17	1.9	0.6%
763E3	Exette silt loam, 14 to 18 percent slopes, severely eroded	39	22.9	7.0%
763F3	Exette silt loam, 18 to 25 percent slopes, severely eroded	21	106.0	32.2%
820B	Dockery silt loam, 2 to 5 percent slopes	83	7.2	2.2%
M162C2	Downs silt loam, till plain, 5 to 9 percent slopes, eroded	82	10.1	3.1%
M162D2	Downs silt loam, till plain, 9 to 14 percent slopes, eroded	57	21.4	6.5%
M162E2	Downs silt loam, till plain, 14 to 18 percent slopes, eroded	45	1.3	0.4%
M163B2	Fayette silt loam, till plain, 2 to 5 percent slopes, eroded	81	0.3	0.1%
M163C2	Fayette silt loam, till plain, 5 to 9 percent slopes, eroded	76	72.7	22.1%
M163D2	Fayette silt loam, till plain, 9 to 14 percent slopes, eroded	47	9.5	2.9%
M163D3	Fayette silty clay loam, till plain, 9 to 14 percent slopes, severely eroded	41	17.6	5.3%
M163E2	Fayette silt loam, till plain, 14 to 18 percent slopes, eroded	36	0.9	0.3%
M163E3	Fayette silty clay loam, till plain, 14 to 18 percent slopes, severely eroded	29	21.0	6.4%
M163F2	Fayette silt loam, till plain, 18 to 25 percent slopes, eroded	18	4.3	1.3%
M163F3	Fayette silty clay loam, till plain, 18 to 25 percent slopes, severely eroded	12	13.4	4.1%
M163G	Fayette silt loam, till plain, 25 to 40 percent slopes	5	10.8	3.3%
Subtotals for Soil Survey Area			328.4	99.6%
Totals for Area of Interest			329.6	100.0%



Corn

Map Unit Symbol *	Soil Type	Suitability Rating 2	Acres in AOI **	Percent of AOI ***	Total Rating by Soil Type
142		79	0.6	0.15%	47
478G		5	0.5	0.12%	3
M163C2		76	78.4	19.24%	5,958
M163D3		41	25.8	6.33%	1,058
M163E3		29	35.6	8.74%	1,032
M163F3		12	23	5.64%	276
M163G		5	11.4	2.80%	57
120C2		87	6.9	1.69%	600
179F2		17	1.9	0.47%	32
499G		5	6	1.47%	30
763E3		39	23.2	5.69%	905
763F3		21	113.3	27.80%	2,379
820B		83	16.1	3.95%	1,336
M162C2		82	10.2	2.50%	836
M162D2		57	25.1	6.16%	1,431
M162E2		45	1.3	0.32%	59
M163B2		81	0.7	0.17%	57
M163D2		47	9.7	2.38%	456
M163E2		36	1.9	0.47%	68
M163F2		18	4.5	1.10%	81
W		0	11.4	2.80%	0
			407.5	100.0%	16,702

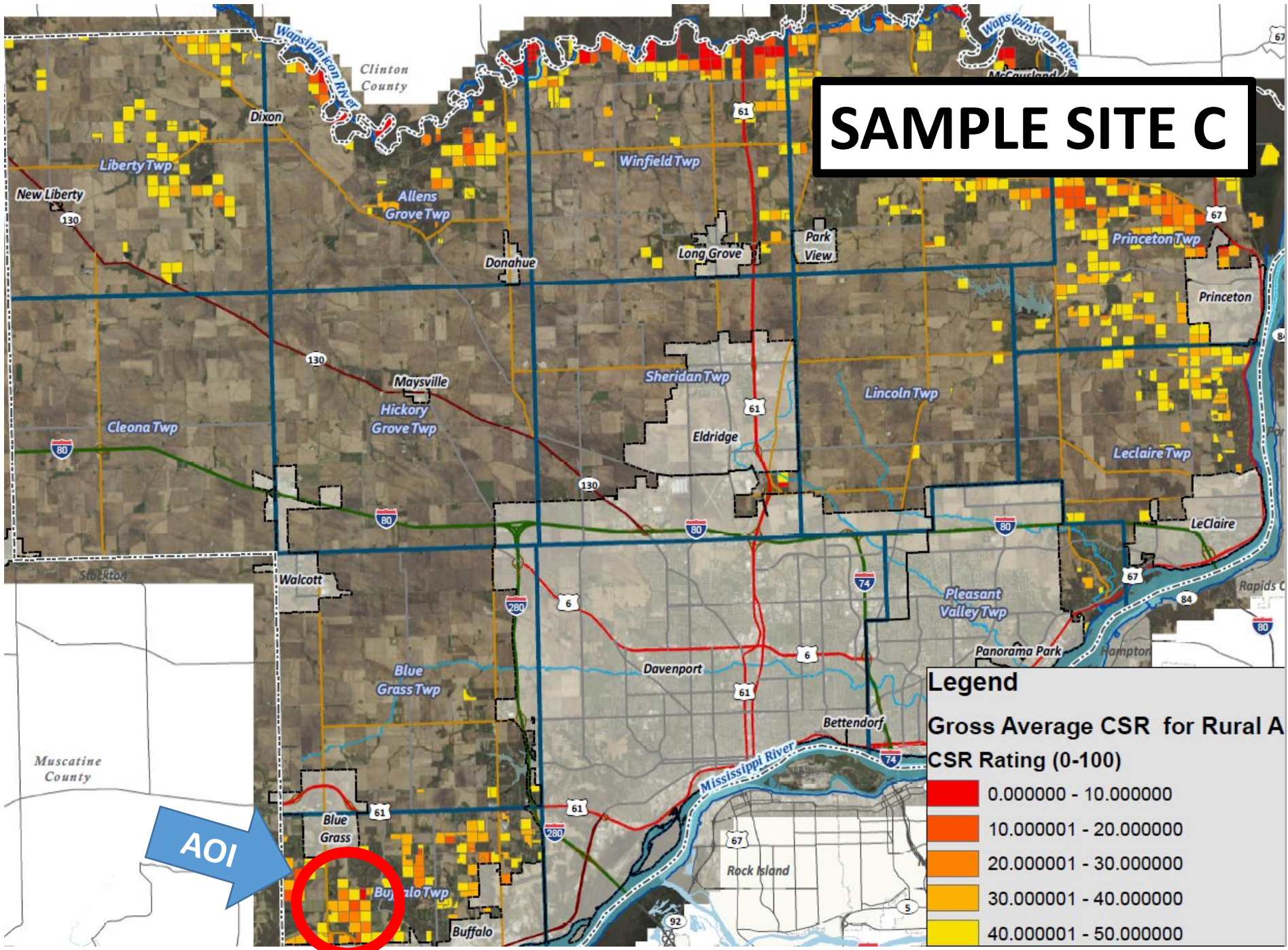
Weighted Average Corn Suitability Rating 2 (CSR2) (per acre) **41.0**

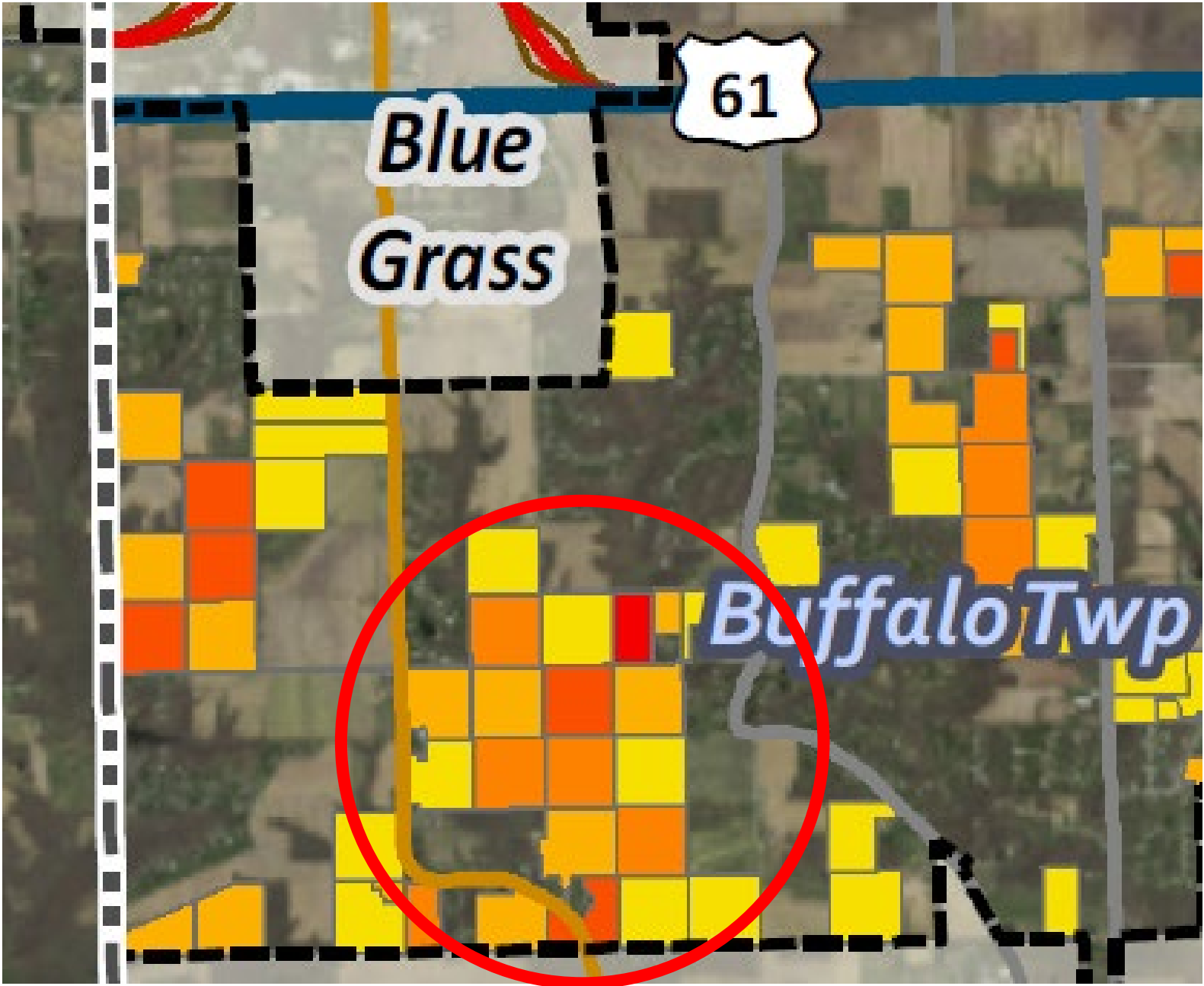


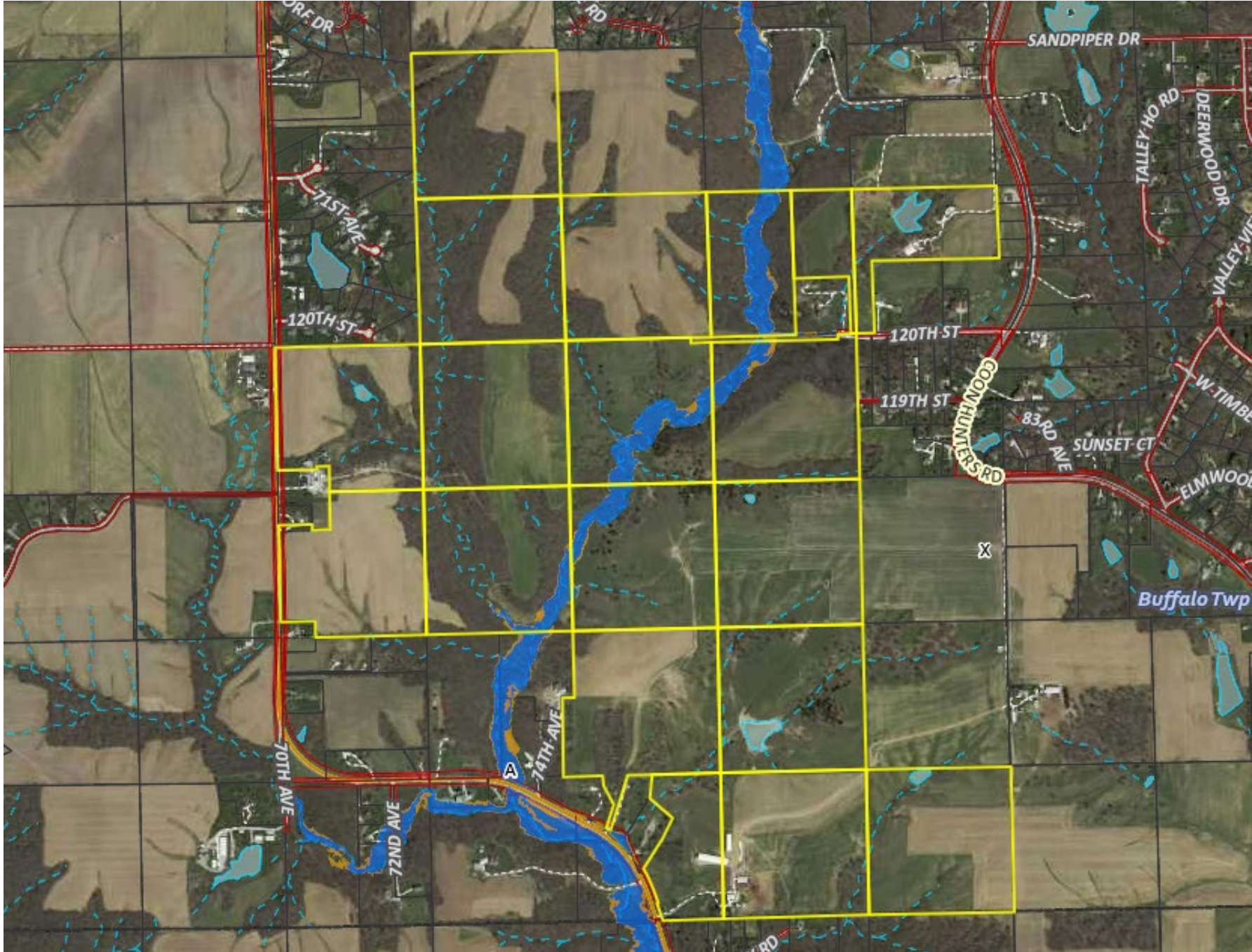
Map Unit Symbol *	Soil Type	Suitability Rating 2	Acres in AOI **	Percent of AOI ***	Total Rating by Soil Type
120B		95	0.2	0.06%	19
120C2		87	6.9	2.09%	600
179F2		17	1.9	0.58%	32
763E3		39	22.9	6.95%	893
763F3		21	106	32.16%	2,226
820B		83	7.2	2.18%	598
M162C2		82	10.1	3.06%	828
M162D2		57	21.4	6.43%	1,220
M162E2		45	1.3	0.39%	59
M163B2		81	0.3	0.09%	24
M163C2		76	73.3	22.24%	5,571
M163D2		47	9.5	2.88%	447
M163D3		41	17.8	5.40%	730
M163E2		36	0.9	0.27%	32
M163E3		29	21	6.37%	609
M163F2		18	4.3	1.30%	77
M163F3		12	13.8	4.19%	166
M163G		5	10.8	3.28%	54
				0.00%	0
				0.00%	0
				0.00%	0
			329.6	100.0%	14,185

Weighted Average Corn Suitability Rating 2 (CSR2) (per acre) **43.0**

SAMPLE SITE C







Area of Interest

Open All Close All

AOI Properties

Clear AOI

AOI Information

Name:

Map Unit Symbols: Use Soil Survey Area Map Unit Symbols Use National Map Unit Symbols

Area (acres): 676.6

Soil Data Available from Web Soil Survey

Scott County, Iowa (IA163)

Data Availability: Tabular and Spatial, complete

Tabular Data: Version 28, Sep 15, 2021

Spatial Data: Version 12, Sep 15, 2021

Clear AOI

Import AOI

Export AOI

Quick Navigation

Address

State and County

Soil Survey Area

Latitude and Longitude or Current Location

PLSS (Section, Township, Range)

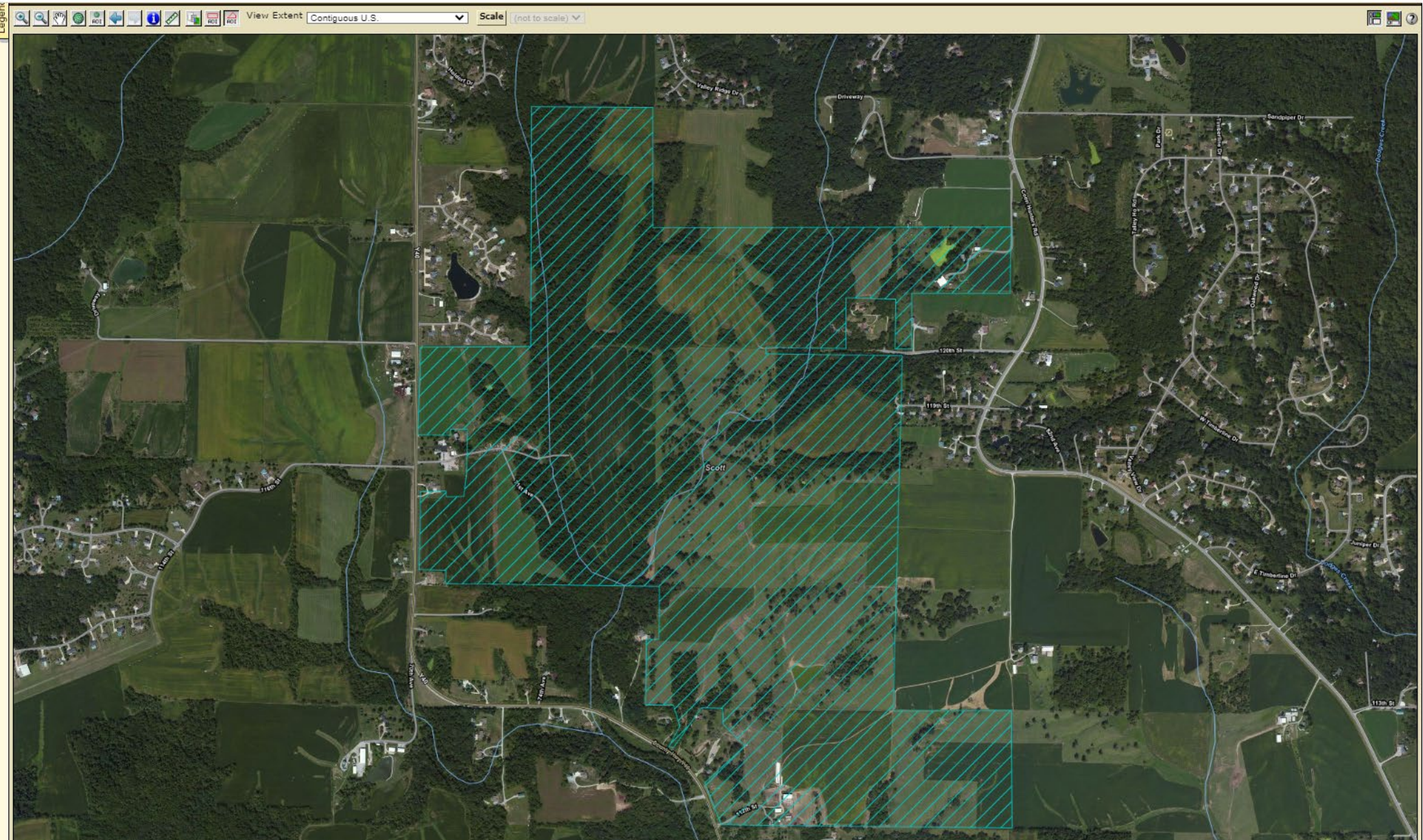
Bureau of Land Management

Department of Defense

Forest Service

National Park Service

Hydrologic Unit



Suitabilities and Limitations Ratings

Open All Close All

- Building Site Development
- Construction Materials
- Disaster Recovery Planning
- Land Classifications
- Land Management
- Military Operations
- Recreational Development
- Sanitary Facilities
- Soil Health

Vegetative Productivity

- Crop Productivity Index
- Forest Productivity (Cubic Feet per Acre per Year)
- Forest Productivity (Tree Site Index)
- Iowa Corn Suitability Rating CSR2 (IA)**

View Description View Rating

View Options

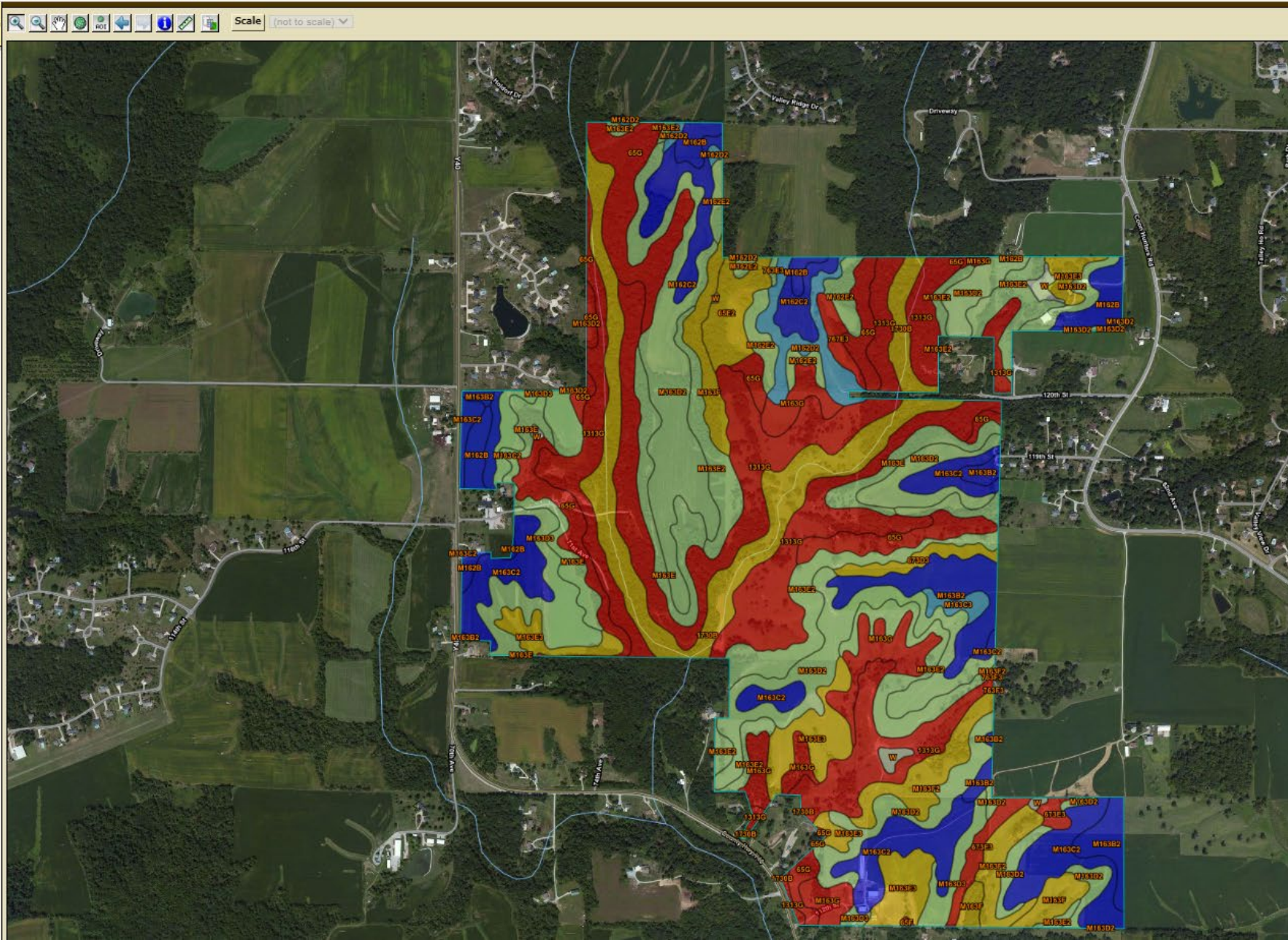
Map
Table
Description of Rating
Rating Options Detailed Description

Advanced Options

View Description View Rating

- Minnesota Crop Productivity Index
- Range Production (Favorable Year)
- Range Production (Normal Year)
- Range Production (Unfavorable Year)
- Yields of Irrigated Crops (Component)
- Yields of Irrigated Crops (Map Unit)
- Yields of Non-Irrigated Crops (Component)
- Yields of Non-Irrigated Crops (Map Unit)

Waste Management
Water Management

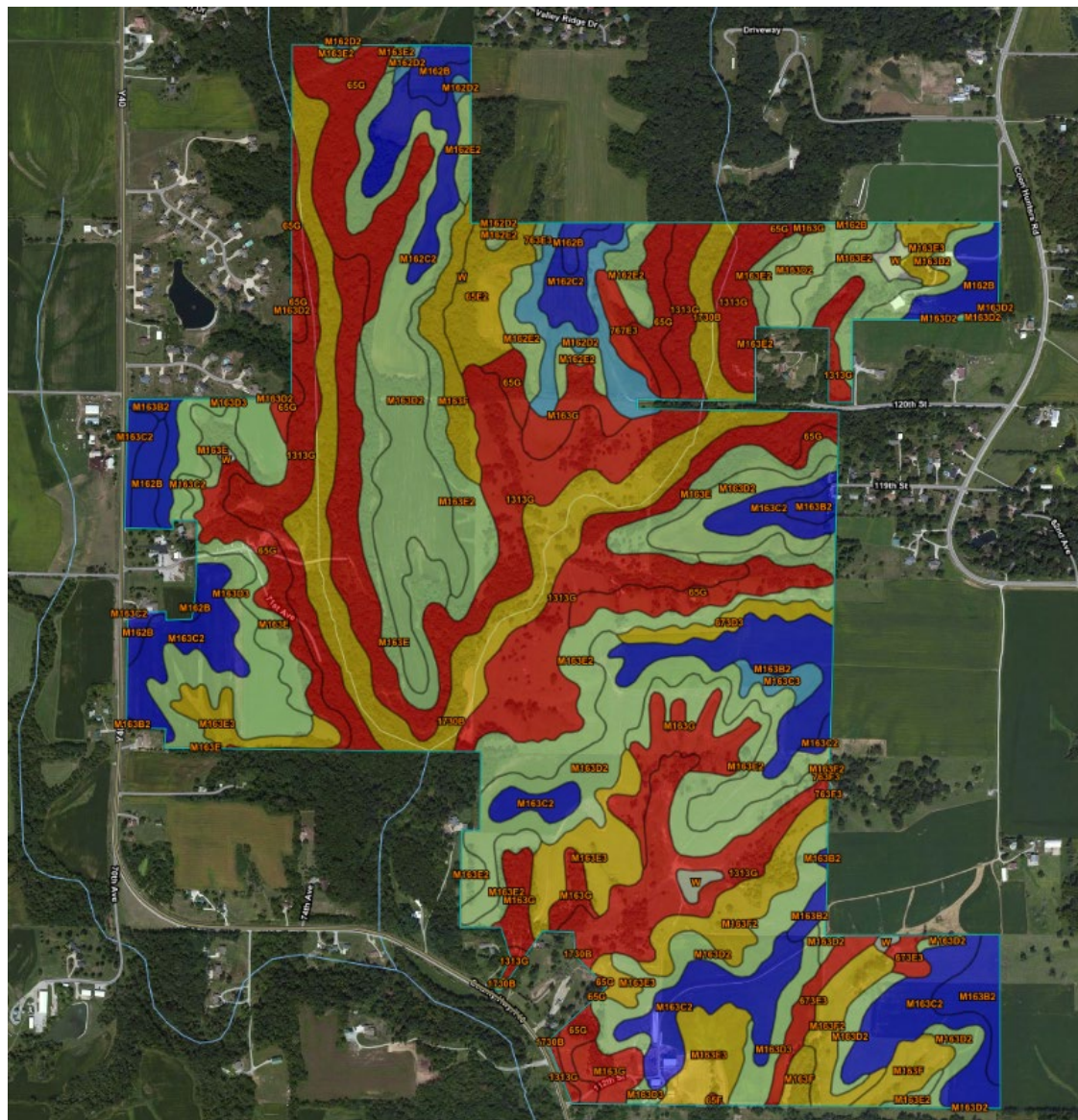


Tables — Iowa Corn Suitability Rating CSR2 (IA) — Summary By Map Unit

Summary by Map Unit — Scott County, Iowa (IA163)

Summary by Map Unit — Scott County, Iowa (IA163)

Map unit symbol	Map unit name	Rating	Acres in AOI	Percent of AOI
65E2	Lindley loam, 14 to 18 percent slopes, moderately eroded	29	9.7	1.4%
65F	Lindley loam, 18 to 25 percent slopes	14	0.2	0.0%
65G	Lindley loam, 25 to 40 percent slopes	5	49.6	7.3%
673D3	Timula silt loam, 9 to 14 percent slopes, severely eroded	20	4.4	0.6%
673E3	Timula silt loam, 14 to 18 percent slopes, severely eroded	8	6.1	0.9%
763E3	Exette silt loam, 14 to 18 percent slopes, severely eroded	39	0.4	0.1%
763F3	Exette silt loam, 18 to 25 percent slopes, severely eroded	21	0.1	0.0%
767E3	Mula silt loam, 14 to 18 percent slopes, severely eroded	5	3.2	0.5%
1313G	Munterville silt loam, 25 to 40 percent slopes	5	127.6	18.9%
1730B	Nodaway-Perks complex, channeled, 0 to 5 percent slopes	21	50.6	7.5%
M162B	Downs silt loam, till plain, 2 to 5 percent slopes	90	14.9	2.2%
M162C2	Downs silt loam, till plain, 5 to 9 percent slopes, eroded	82	15.2	2.2%
M162D2	Downs silt loam, till plain, 9 to 14 percent slopes, eroded	57	11.6	1.7%
M162E2	Downs silt loam, till plain, 14 to 18 percent slopes, eroded	45	11.8	1.7%
M163B2	Fayette silt loam, till plain, 2 to 5 percent slopes, eroded	81	23.7	3.5%
M163C2	Fayette silt loam, till plain, 5 to 9 percent slopes, eroded	76	49.0	7.2%
M163C3	Fayette silty clay loam, till plain, 5 to 9 percent slopes, severely eroded	69	2.7	0.4%
M163D2	Fayette silt loam, till plain, 9 to 14 percent slopes, eroded	47	97.8	14.5%
M163D3	Fayette silty clay loam, till plain, 9 to 14 percent slopes, severely eroded	41	28.5	4.2%
M163E	Fayette silt loam, till plain, 14 to 18 percent slopes	39	27.9	4.1%
M163E2	Fayette silt loam, till plain, 14 to 18 percent slopes, eroded	36	53.4	7.9%
M163E3	Fayette silty clay loam, till plain, 14 to 18 percent slopes, severely eroded	29	29.1	4.3%
M163F	Fayette silt loam, till plain, 18 to 25 percent slopes	21	13.8	2.0%
M163F2	Fayette silt loam, till plain, 18 to 25 percent slopes, eroded	18	17.8	2.6%
M163G	Fayette silt loam, till plain, 25 to 40 percent slopes	5	24.3	3.6%
W	Water		3.3	0.5%
Totals for Area of Interest			676.6	100.0%



1	Map Unit	Suitability	Acres	Percent of	Total Rating
2	Symbol *	Rating 2	in AOI **	AOI ***	by Soil Type
3	65E2	29	9.7	1.43%	281
4	65F	14	0.2	0.03%	3
5	65G	5	49.6	7.33%	248
6	673D3	20	4.4	0.65%	88
7	673E3	8	6.1	0.90%	49
8	763E3	39	0.4	0.06%	16
9	763F3	21	0.1	0.01%	2
10	767E3	5	3.2	0.47%	16
11	1313G	5	127.6	18.86%	638
12	1730B	21	50.6	7.48%	1,063
13	M162B	90	14.9	2.20%	1,341
14	M162C2	82	15.2	2.25%	1,246
15	M162D2	57	11.6	1.71%	661
16	M162E2	45	11.8	1.74%	531
17	M163B2	81	23.7	3.50%	1,920
18	M163C2	76	49	7.24%	3,724
19	M163C3	69	2.7	0.40%	186
20	M163D2	47	97.8	14.45%	4,597
21	M163D3	41	28.5	4.21%	1,169
22	M163E	39	27.9	4.12%	1,088
23	M163E2	36	53.4	7.89%	1,922
24	M163E3	29	29.1	4.30%	844
25	M163F	21	13.8	2.04%	290
26	M163F2	18	17.8	2.63%	320
27	M163G	5	24.3	3.59%	122
28	w	0	3.3	0.49%	0
29					0
30					0
31			676.7	100.0%	21,922
32					
33	Weighted Average Corn Suitability Rating 2				32.4

Area of Interest

Open All Close All

AOI Properties

Clear AOI

AOI Information

Name

Map Unit Symbols Use Soil Survey Area Map Unit Symbols Use National Map Unit Symbols

Area (acres) 457.4

Soil Data Available from Web Soil Survey

Scott County, Iowa (IA163)

Data Availability Tabular and Spatial, complete

Tabular Data Version 28, Sep 15, 2021

Spatial Data Version 12, Sep 15, 2021

Clear AOI

Import AOI

Export AOI

Quick Navigation

Address

State and County

Soil Survey Area

Latitude and Longitude or Current Location

PLSS (Section, Township, Range)

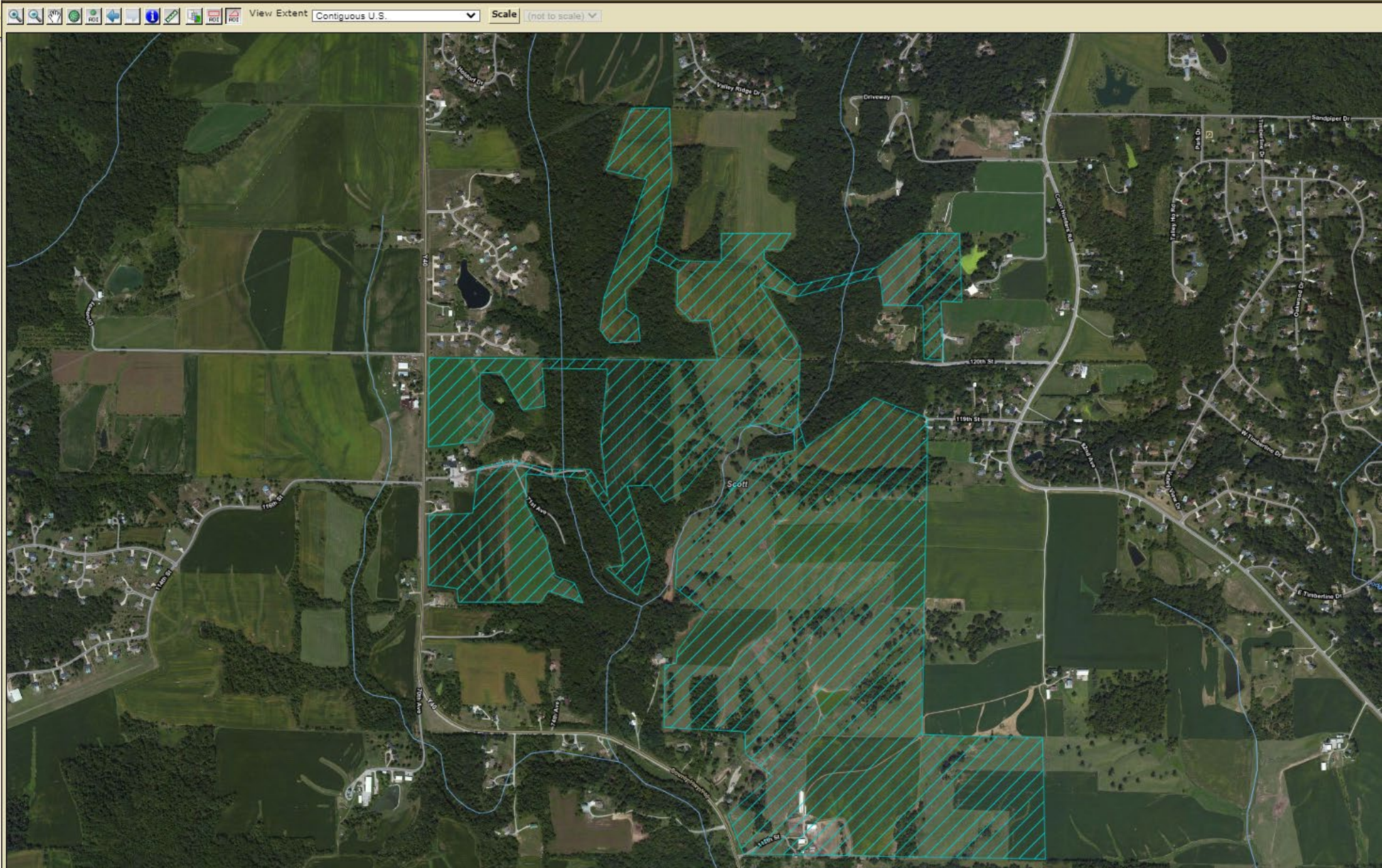
Bureau of Land Management

Department of Defense

Forest Service

National Park Service

Hydrologic Unit



Search

Suitabilities and Limitations Ratings

Open All Close All

- Building Site Development
- Construction Materials
- Disaster Recovery Planning
- Land Classifications
- Land Management
- Military Operations
- Recreational Development
- Sanitary Facilities
- Soil Health

Vegetative Productivity

- Crop Productivity Index
- Forest Productivity (Cubic Feet per Acre per Year)
- Forest Productivity (Tree Site Index)

Iowa Corn Suitability Rating CSR2 (IA)

View Description View Rating

View Options

- Map
- Table
- Description of Rating
- Rating Options Detailed Description

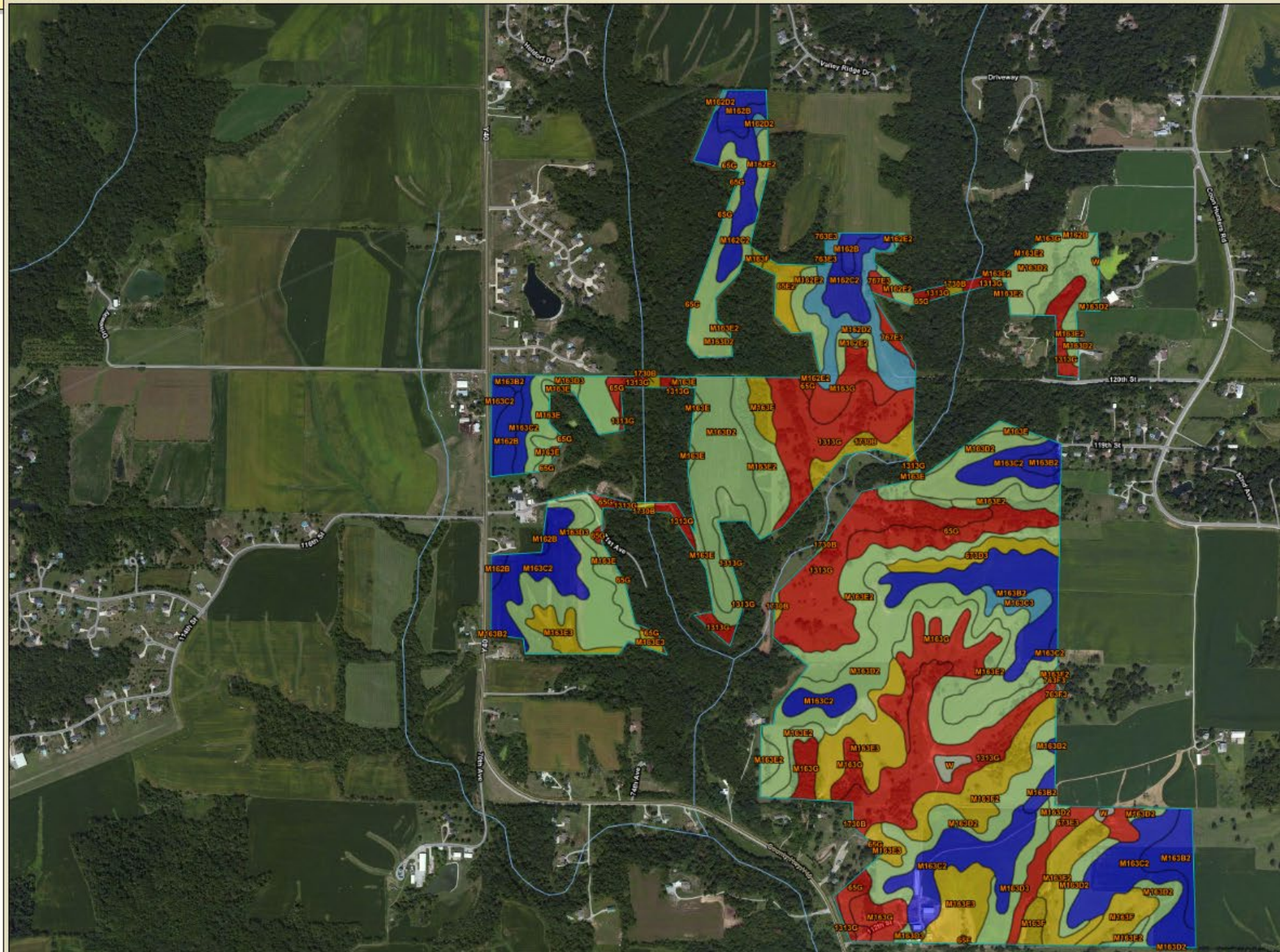
Advanced Options

View Description View Rating

- Minnesota Crop Productivity Index
- Range Production (Favorable Year)
- Range Production (Normal Year)
- Range Production (Unfavorable Year)
- Yields of Irrigated Crops (Component)
- Yields of Irrigated Crops (Map Unit)
- Yields of Non-Irrigated Crops (Component)
- Yields of Non-Irrigated Crops (Map Unit)
- Waste Management
- Water Management

Map - Iowa Corn Suitability Rating CSR2 (IA)

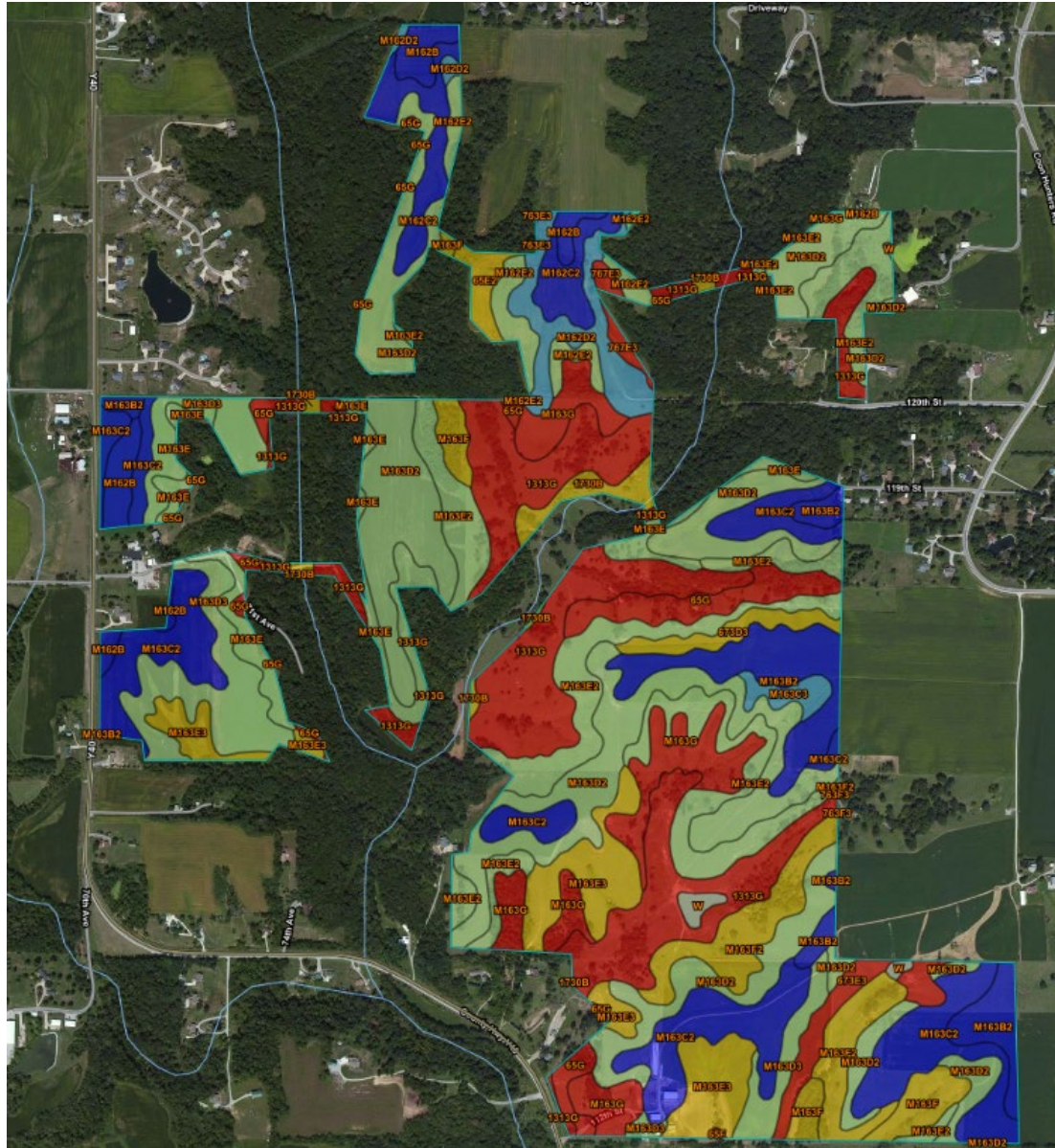
Scale (not to scale)



Summary by Map Unit — Scott County, Iowa (IA163)

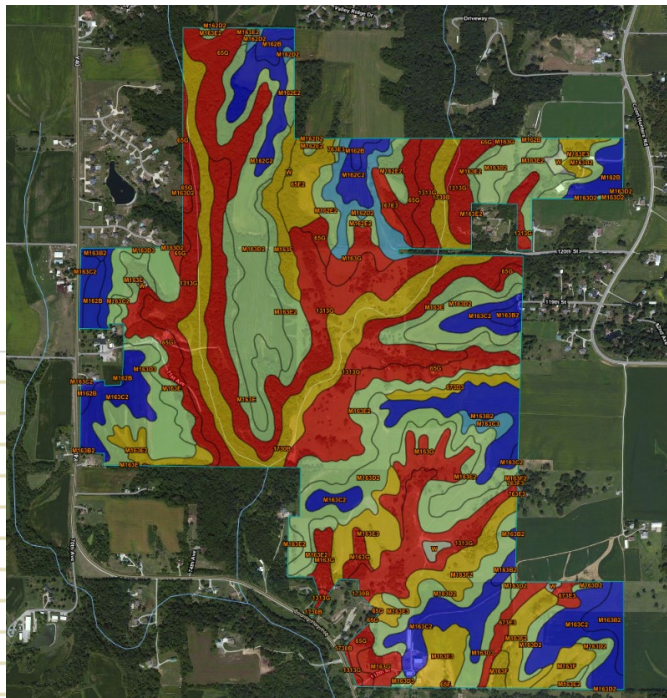
Summary by Map Unit — Scott County, Iowa (IA163)

Map unit symbol	Map unit name	Rating	Acres in AOI	Percent of AOI
65E2	Lindley loam, 14 to 18 percent slopes, moderately eroded	29	3.0	0.6%
65F	Lindley loam, 18 to 25 percent slopes	14	0.2	0.0%
65G	Lindley loam, 25 to 40 percent slopes	5	13.8	3.0%
673D3	Timula silt loam, 9 to 14 percent slopes, severely eroded	20	4.3	1.0%
673E3	Timula silt loam, 14 to 18 percent slopes, severely eroded	8	6.3	1.4%
763E3	Exette silt loam, 14 to 18 percent slopes, severely eroded	39	0.0	0.0%
763F3	Exette silt loam, 18 to 25 percent slopes, severely eroded	21	0.0	0.0%
767E3	Mula silt loam, 14 to 18 percent slopes, severely eroded	5	1.8	0.4%
1313G	Munterville silt loam, 25 to 40 percent slopes	5	64.1	14.0%
1730B	Nodaway-Perks complex, channeled, 0 to 5 percent slopes	21	5.3	1.1%
M162B	Downs silt loam, till plain, 2 to 5 percent slopes	90	8.5	1.9%
M162C2	Downs silt loam, till plain, 5 to 9 percent slopes, eroded	82	12.6	2.7%
M162D2	Downs silt loam, till plain, 9 to 14 percent slopes, eroded	57	10.9	2.4%
M162E2	Downs silt loam, till plain, 14 to 18 percent slopes, eroded	45	7.7	1.7%
M163B2	Fayette silt loam, till plain, 2 to 5 percent slopes, eroded	81	22.9	5.0%
M163C2	Fayette silt loam, till plain, 5 to 9 percent slopes, eroded	76	47.8	10.5%
M163C3	Fayette silty clay loam, till plain, 5 to 9 percent slopes, severely eroded	69	2.7	0.6%
M163D2	Fayette silt loam, till plain, 9 to 14 percent slopes, eroded	47	83.7	18.3%
M163D3	Fayette silty clay loam, till plain, 9 to 14 percent slopes, severely eroded	41	26.9	5.9%
M163E	Fayette silt loam, till plain, 14 to 18 percent slopes	39	14.1	3.1%
M163E2	Fayette silt loam, till plain, 14 to 18 percent slopes, eroded	36	45.0	9.8%
M163E3	Fayette silty clay loam, till plain, 14 to 18 percent slopes, severely eroded	29	24.4	5.3%
M163F	Fayette silt loam, till plain, 18 to 25 percent slopes	21	9.2	2.0%
M163F2	Fayette silt loam, till plain, 18 to 25 percent slopes, eroded	18	17.7	3.9%
M163G	Fayette silt loam, till plain, 25 to 40 percent slopes	5	22.9	5.0%
W	Water		1.7	0.4%
Totals for Area of Interest			457.4	100.0%



1	Map Unit	Suitability	Acres	Percent of	Total Rating
2	Symbol *	Rating 2	in AOI **	AOI ***	by Soil Type
3	65E2	29	3	0.66%	87
4	65F	14	0.2	0.04%	3
5	65G	5	13.8	3.02%	69
6	673D3	20	4.3	0.94%	86
7	673E3	8	6.3	1.38%	50
8	763E3	39	0	0.00%	0
9	763F3	21	0	0.00%	0
10	767E3	5	1.8	0.39%	9
11	1313G	5	64.1	14.01%	321
12	1730B	21	5.3	1.16%	111
13	M162B	90	8.5	1.86%	765
14	M162C2	82	12.6	2.75%	1,033
15	M162D2	57	10.9	2.38%	621
16	M162E2	45	7.7	1.68%	347
17	M163B2	81	22.9	5.01%	1,855
18	M163C2	76	47.8	10.45%	3,633
19	M163C3	69	2.7	0.59%	186
20	M163D2	47	83.7	18.30%	3,934
21	M163D3	41	26.9	5.88%	1,103
22	M163E	39	14.1	3.08%	550
23	M163E2	36	45	9.84%	1,620
24	M163E3	29	24.4	5.33%	708
25	M163F	21	9.2	2.01%	193
26	M163F2	18	17.7	3.87%	319
27	M163G	5	22.9	5.01%	115
28	W	0	1.7	0.37%	0
29					0
30					0
31			457.5	100.0%	17,284
32					
33	Weighted Average Corn Suitability Rating 2				37.8

1	Map Unit				Total Rating
2	Symbol *				by Soil Type
3	65E2				281
4	65F				3
5	65G				248
6	673D3				88
7	673E3				49
8	763E3				16
9	763F3				2
10	767E3				16
11	1313G				638
12	1730B				1,063
13	M162B	30	14.9	2.20%	1,341
14	M162C2	82	15.2	2.25%	1,246
15	M162D2	57	11.6	1.71%	661
16	M162E2	45	11.8	1.74%	531
17	M163B2	81	23.7	3.50%	1,920
18	M163C2	76	49	7.24%	3,724
19	M163C3	69	2.7	0.40%	186
20	M163D2	47	97.8	14.45%	4,597
21	M163D3	41	28.5	4.21%	1,169
22	M163E	39	27.9	4.12%	1,088
23	M163E2	36	53.4	7.89%	1,922
24	M163E3	29	29.1	4.30%	844
25	M163F	21	13.8	2.04%	290
26	M163F2	18	17.8	2.63%	320
27	M163G	5	24.3	3.59%	122
28	w	0	3.3	0.49%	0
29					0
30					0
31			676.7	100.0%	
32					
33	Weighted Average Corn Suitability Rating 2				32.4



1	Map Unit	Acres	Percent of	Total Rating	
2	Symbol	AOI **	AOI ***	by Soil Type	
3	65E2		0.66%	87	
4	65F		0.04%	3	
5	65G		3.02%	69	
6	673D3		0.94%	86	
7	673E3		1.38%	50	
8	763E3		0.00%	0	
9	763F3		0.00%	0	
10	767E3		0.39%	9	
11	1313G		14.01%	321	
12	1730B		1.16%	111	
13	M162B	30	8.5	1.86%	765
14	M162C2	82	12.6	2.75%	1,033
15	M162D2	57	10.9	2.38%	621
16	M162E2	45	7.7	1.68%	347
17	M163B2	81	22.9	5.01%	1,855
18	M163C2	76	47.8	10.45%	3,633
19	M163C3	69	2.7	0.59%	186
20	M163D2	47	83.7	18.30%	3,934
21	M163D3	41	26.9	5.88%	1,103
22	M163E	39	14.1	3.08%	550
23	M163E2	36	45	9.84%	1,620
24	M163E3	29	24.4	5.33%	708
25	M163F	21	9.2	2.01%	193
26	M163F2	18	17.7	3.87%	319
27	M163G	5	22.9	5.01%	115
28	w	0	1.7	0.37%	0
29					0
30					0
31			457.5	100.0%	
32					
33	Weighted Average Corn Suitability Rating 2				37.8

