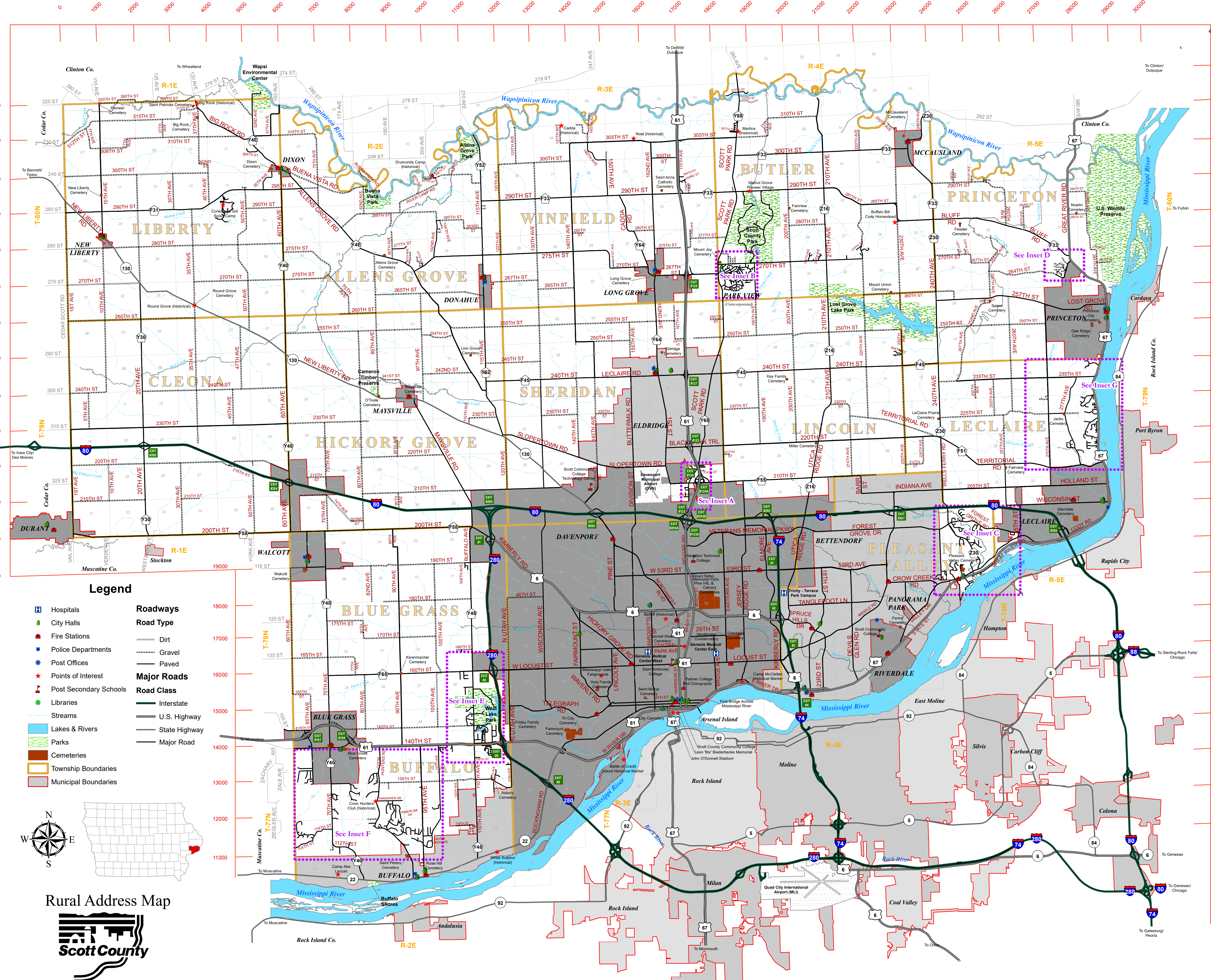


# Scott County, Iowa Rural Address Map

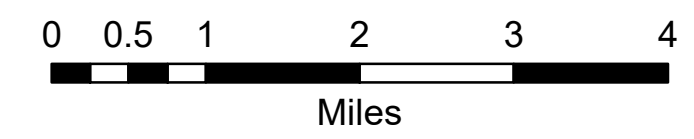


## Legend

- |                        |                    |
|------------------------|--------------------|
| Hospitals              | <b>Roadways</b>    |
| City Halls             | <b>Road Type</b>   |
| Fire Stations          | Gravel             |
| Police Departments     | Paved              |
| Post Offices           | <b>Major Roads</b> |
| Points of Interest     | Interstate         |
| Post Secondary Schools | U.S. Highway       |
| Libraries              | State Highway      |
| Streams                | Major Road         |
| Lakes & Rivers         |                    |
| Parks                  |                    |
| Cemeteries             |                    |
| Township Boundaries    |                    |
| Municipal Boundaries   |                    |



www.scottcountyiowa.com



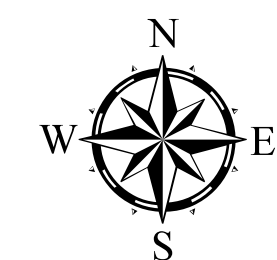
Map Insets on Reverse

Map Created by: Scott County Geographic Information System (GIS), February 2019



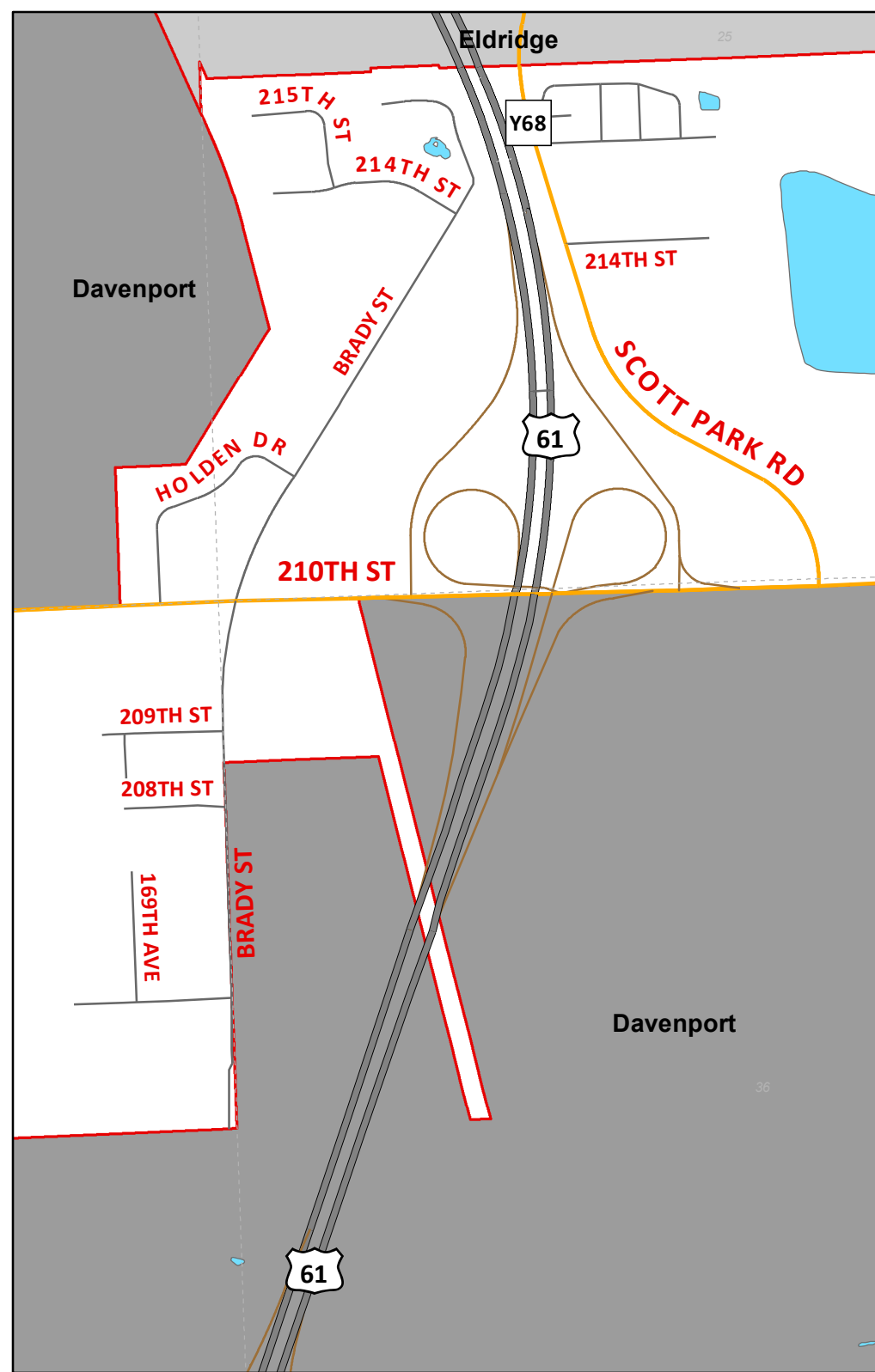
# Scott County, Iowa Rural Address Map

## Map Inset Views

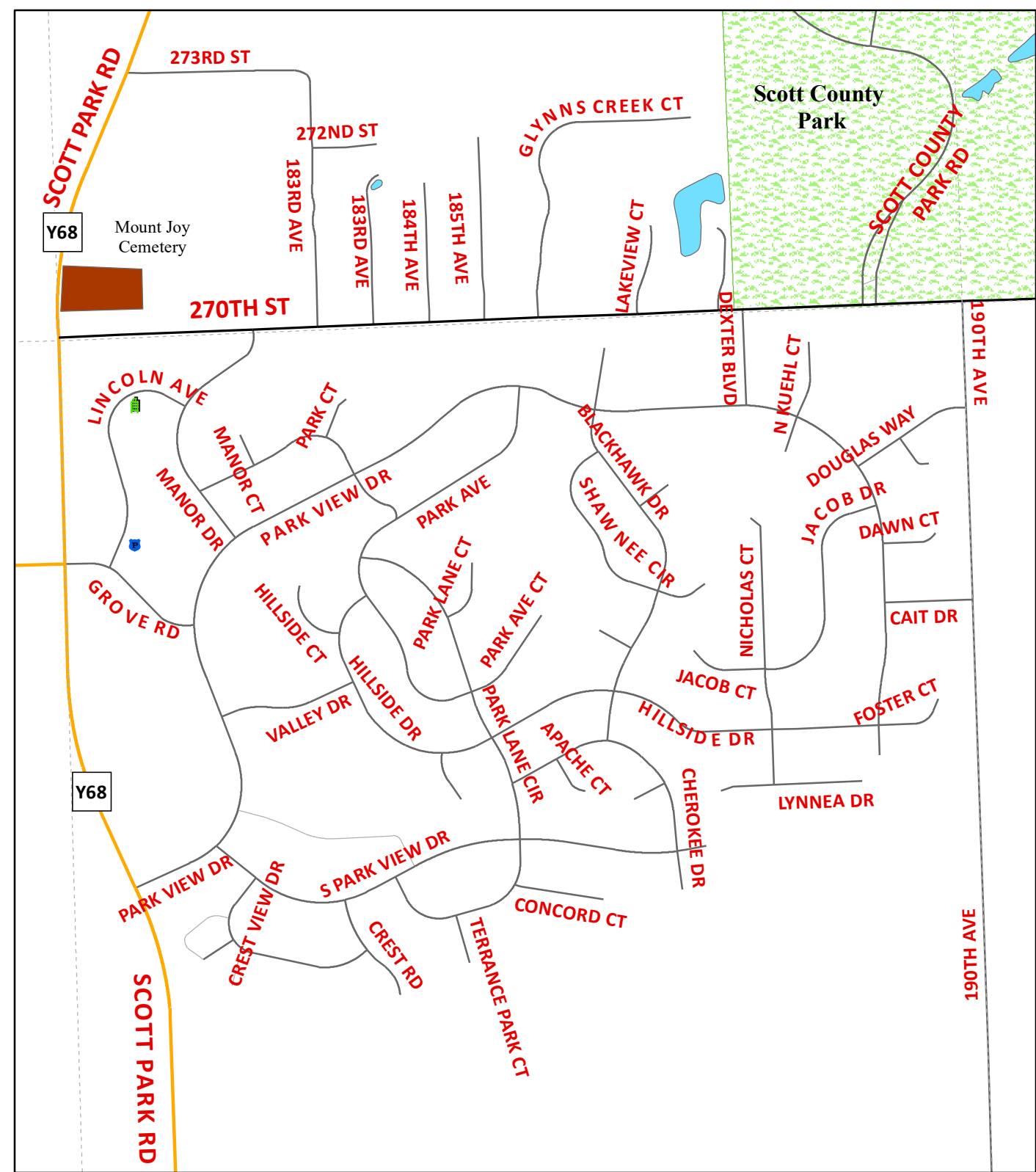


- Legend**
- Hospitals
  - City Halls
  - Fire Stations
  - Police Departments
  - Post Offices
  - Points of Interest
  - Post Secondary Schools
  - Libraries
  - Lakes & Rivers
  - Cemeteries
  - Parks
- All Roads**
- Road Class
  - Interstate
  - U.S. Highway
  - State Highway
  - County Route
  - Major Road
  - Local Road
  - Ramp
  - Alley/Access Road
  - Bike Trail

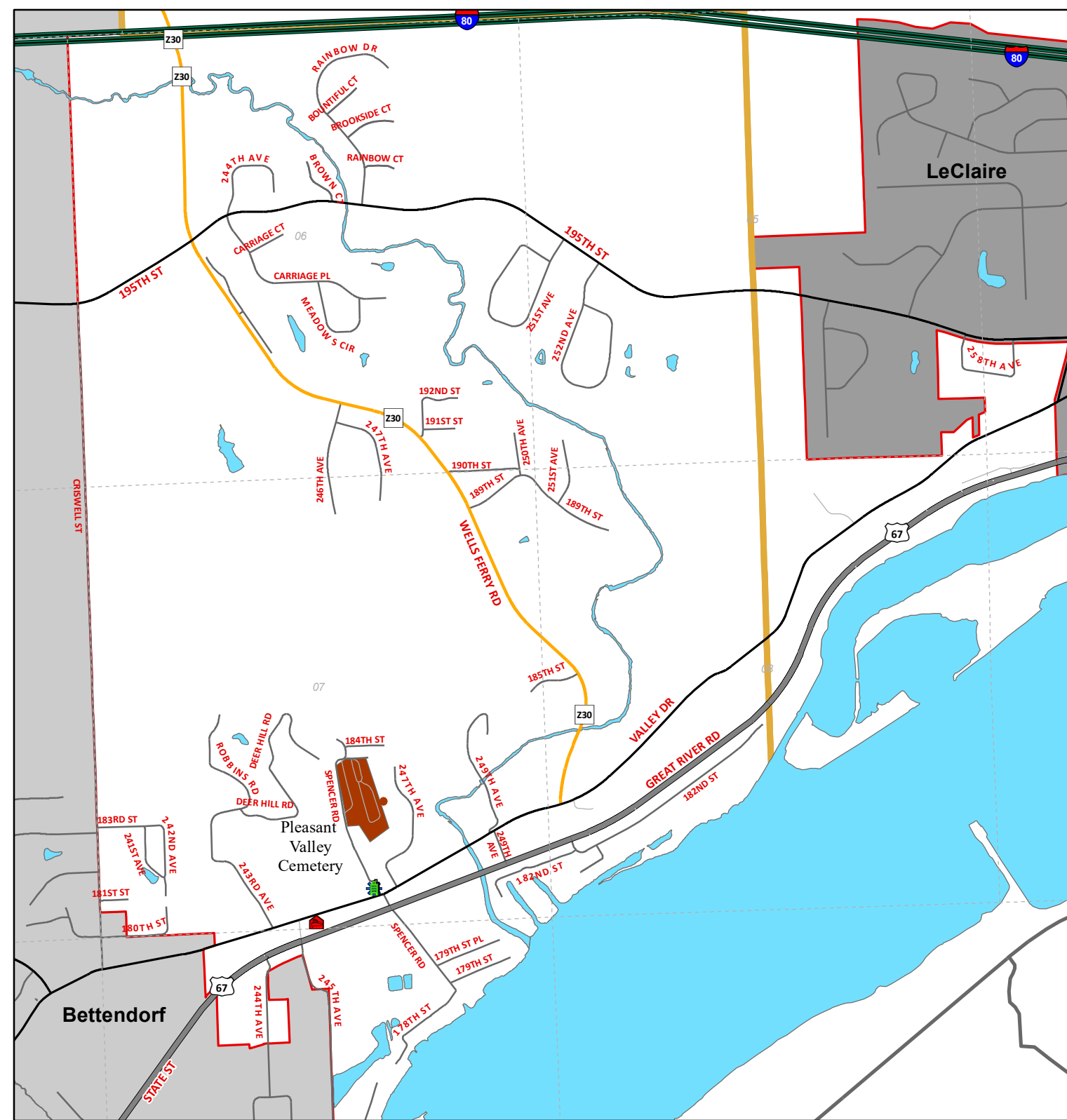
### Inset A Mt. Joy



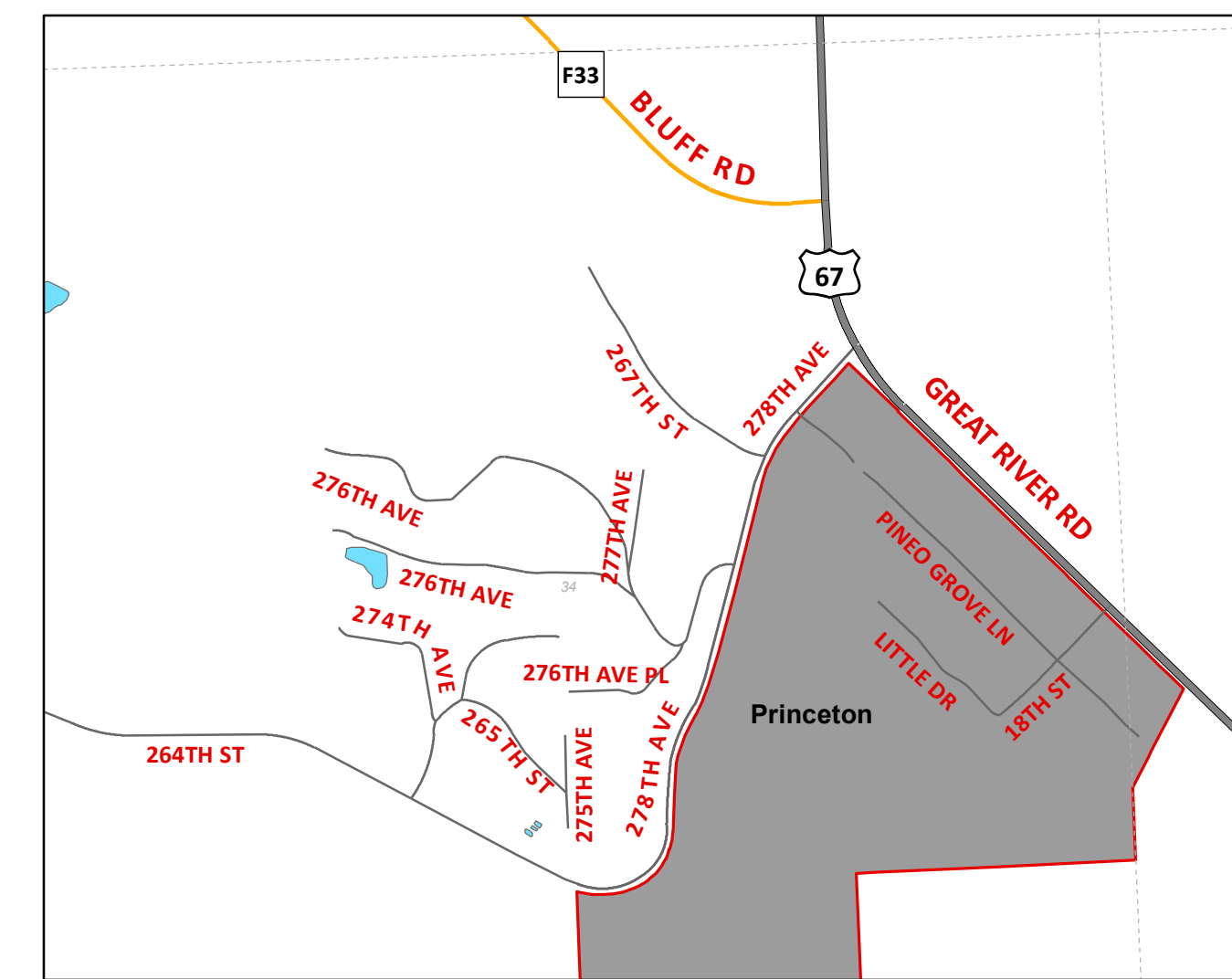
### Inset B Park View



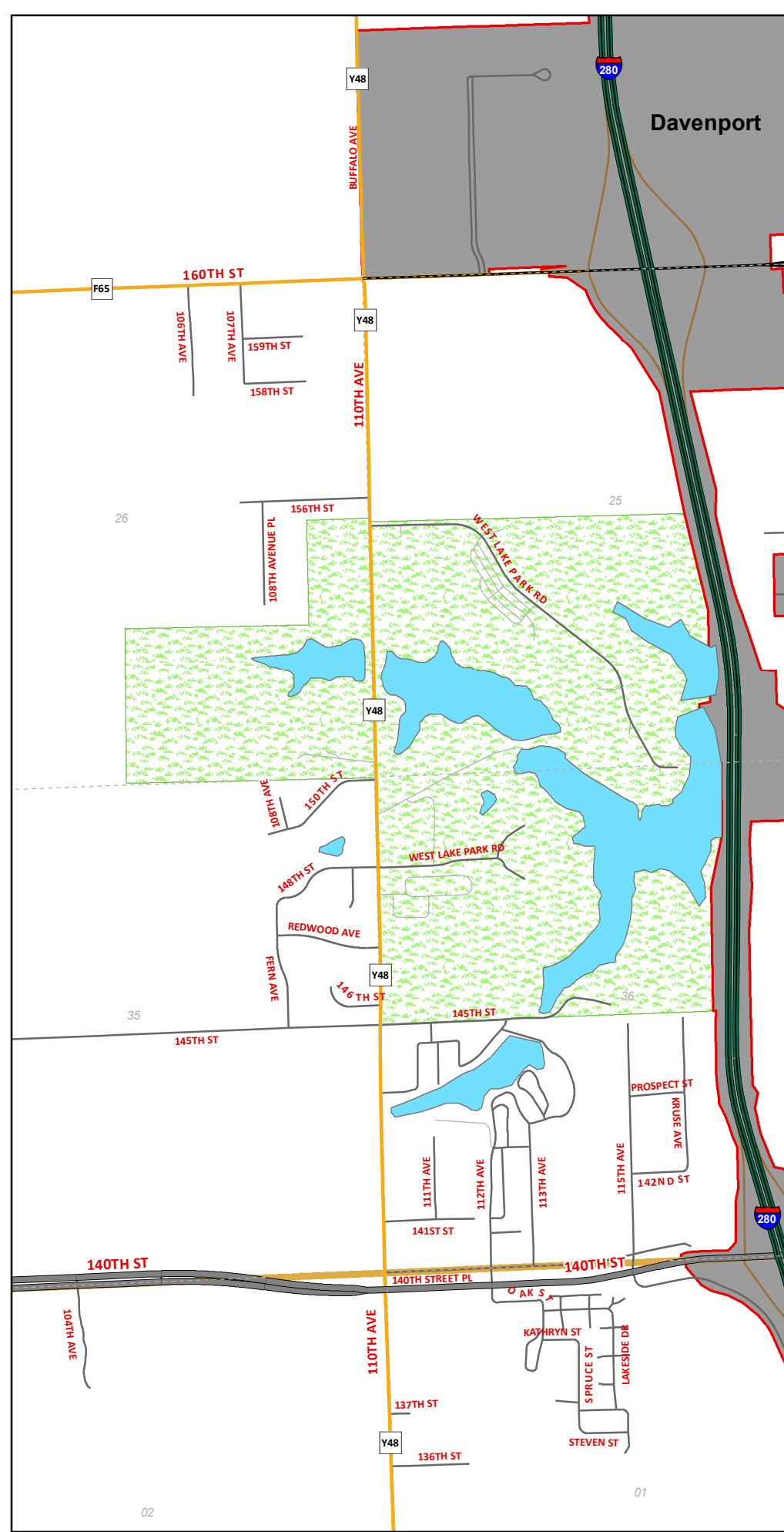
### Inset C Pleasant Valley



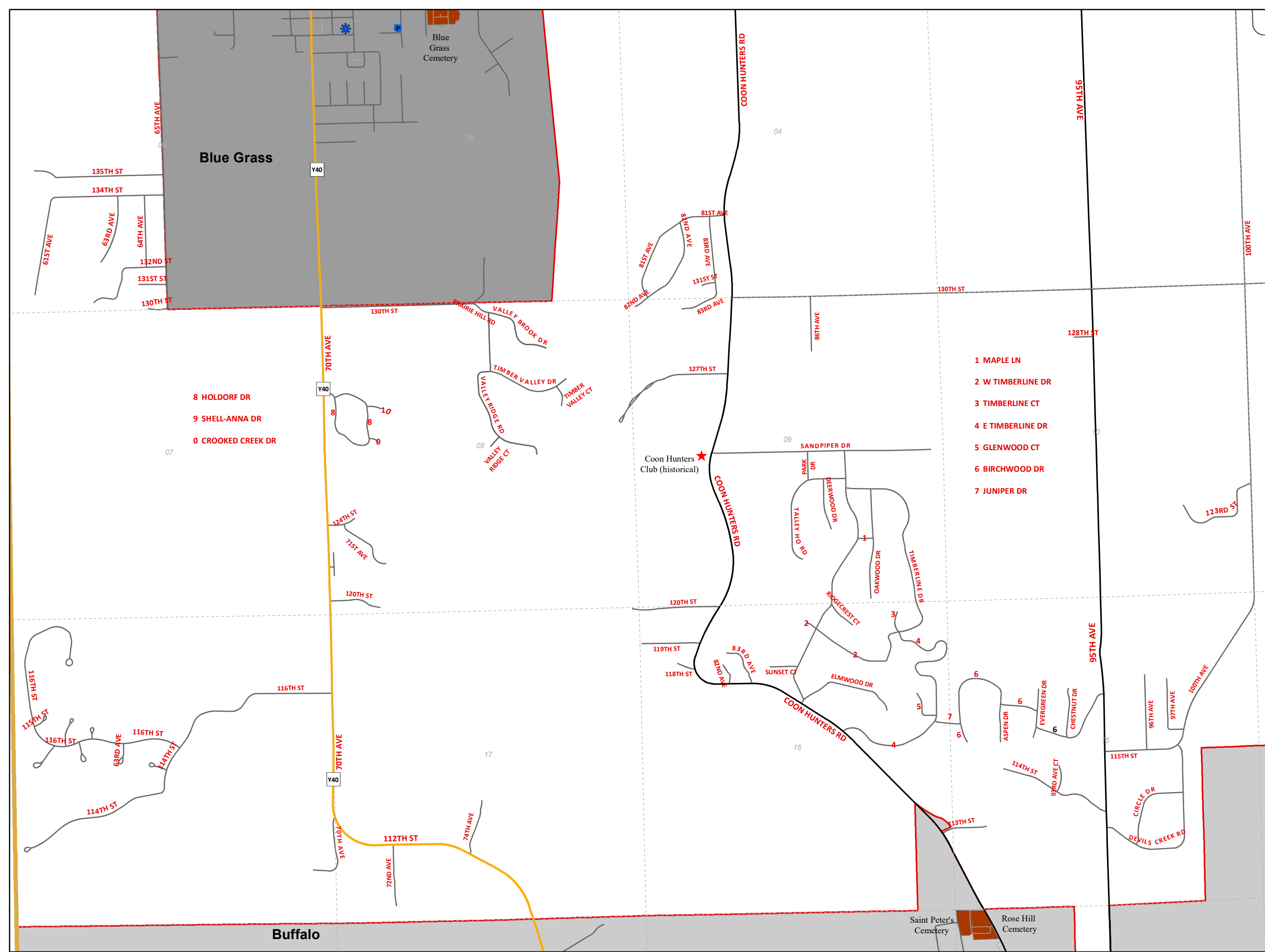
### Inset D Centennial Oaks



### Inset E West Lake



### Inset F Buffalo Township



### Inset G LeClaire Township

