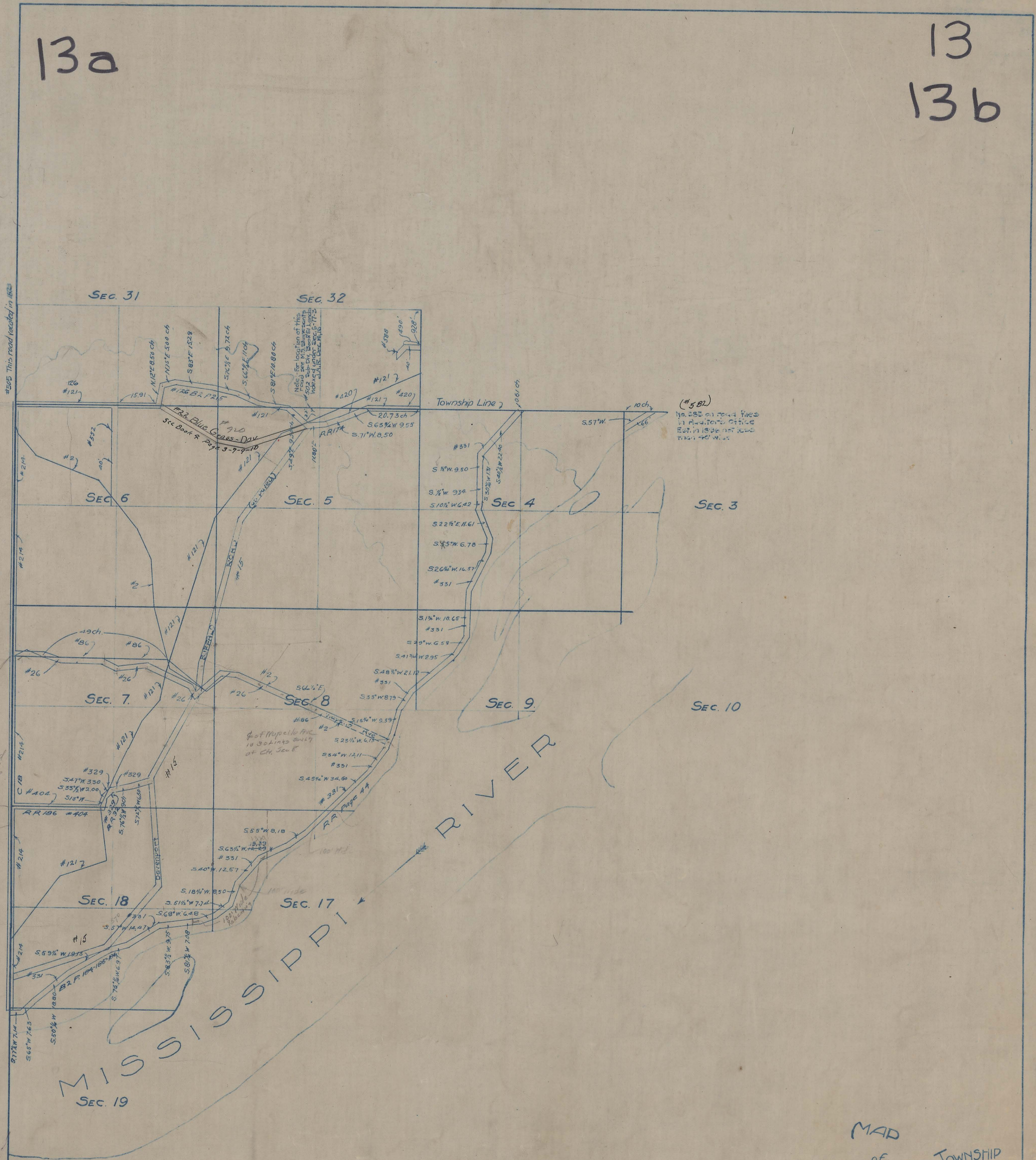


R III

13a

13  
13b

T LXXXVIII T LXXXVII T



Book 6  
Page 25

vacated  
1876

(#582)  
No 582 on record filed  
in Auditor's Office  
Est. in 1860 not used  
this 1860 W. 1/2

MISSISSIPPI RIVER

MAD  
of  
ROCKINGHAM TOWNSHIP  
SCOTT  
Co.  
IOWA

Scale  
4" = 1 Mile

Legend:  
 Section Line ———  
 Quarter SL. ———  
 Highway ———  
 Uncertainty Hwy. ———  
 Stream. ———

13c

13d