

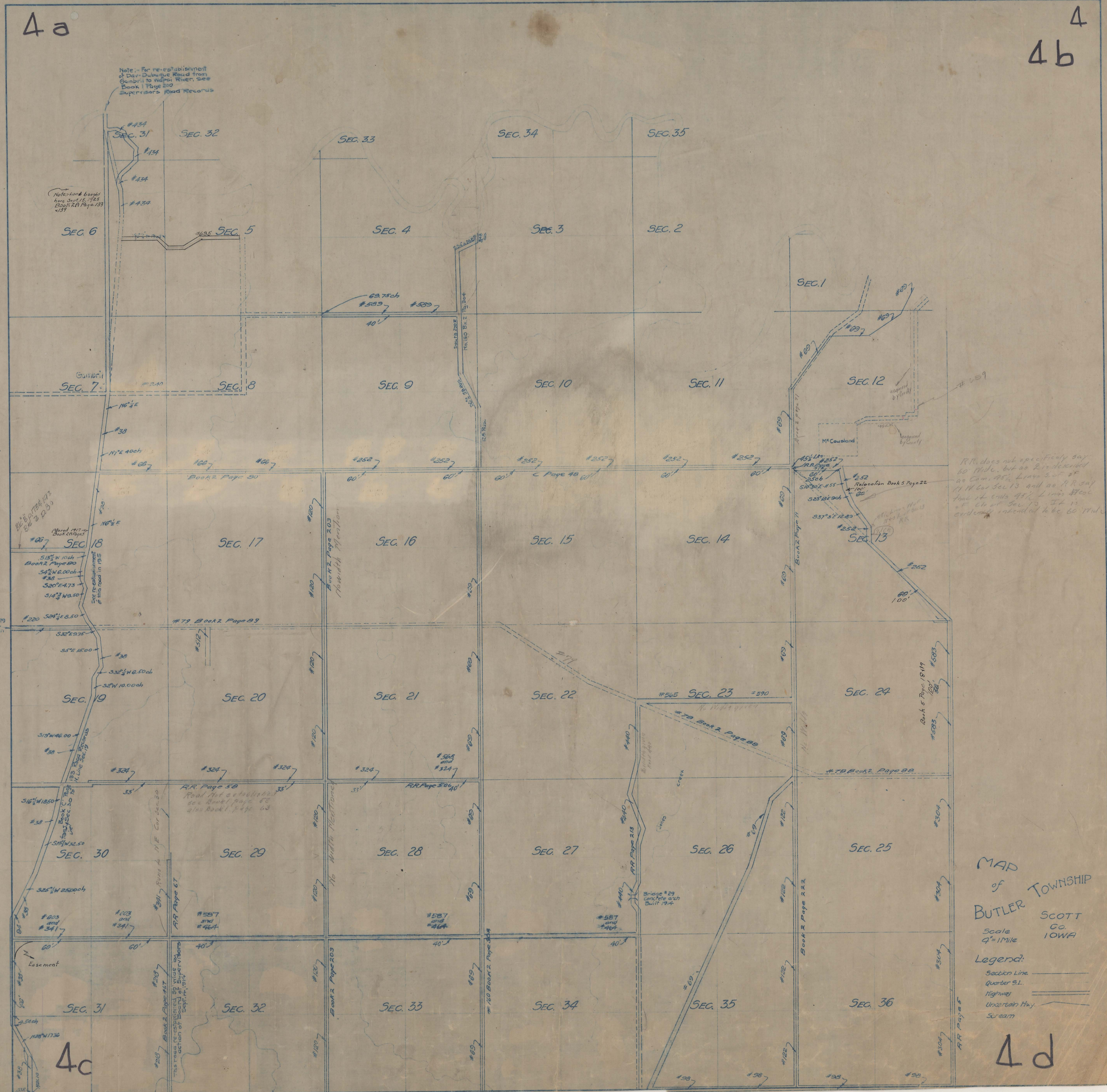
4a

4b

T LXXXI

LXXX

T



Note: For re-establishment of Day-Dubuque Road from Gambier to Walnut River, see Book 1 Page 200 Supervisors Road Records

Note: Look back here 3rd of 1825 Book 2 Page 133 437

RR does not specifically say 60' wide, but as RR located as Com. Act, Lines 3rd of 1844 Sec 13 and as RR say line it ends 95' Line Head of Ch of Sec 13. It is evidently intended to be 60' wide.

Shown as No. 79 old road plat. No width given.

MAP of BUTLER TOWNSHIP SCOTT CO. IOWA Scale 4" = 1 Mile

Legend:
 Section Line
 Quarter S.L.
 Highway
 Uncertain Hwy.
 Stream

4c

4d