

Acquired from RALPH W. PORTER & WF

R.O.W. Area 0.47 ± ACS.

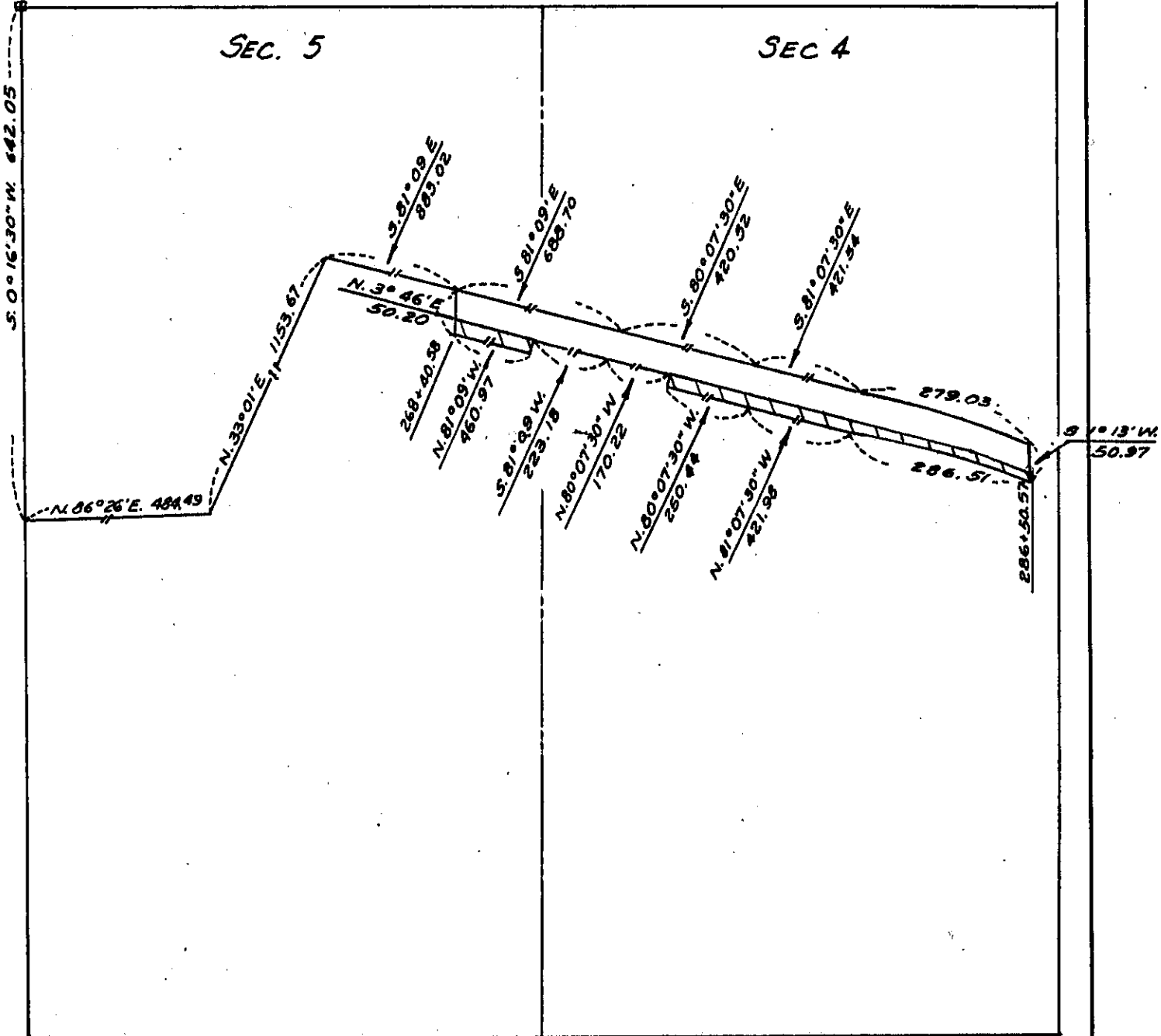
Acquired by EASEMENT

From & sta. 268+40.58 to & sta 286+50.57

To section 4 & 5 Township T9N Range 5E

Township (Civil) PRINCETON

E 1/4, N.W. 1/4 COR SEC. 5  
T. 79N. R. 5E. 5 P.M.  
PRINCETON TWP



County SCOTT

Project No. S-265 PROP. # 30