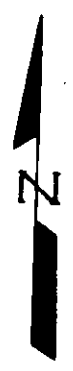
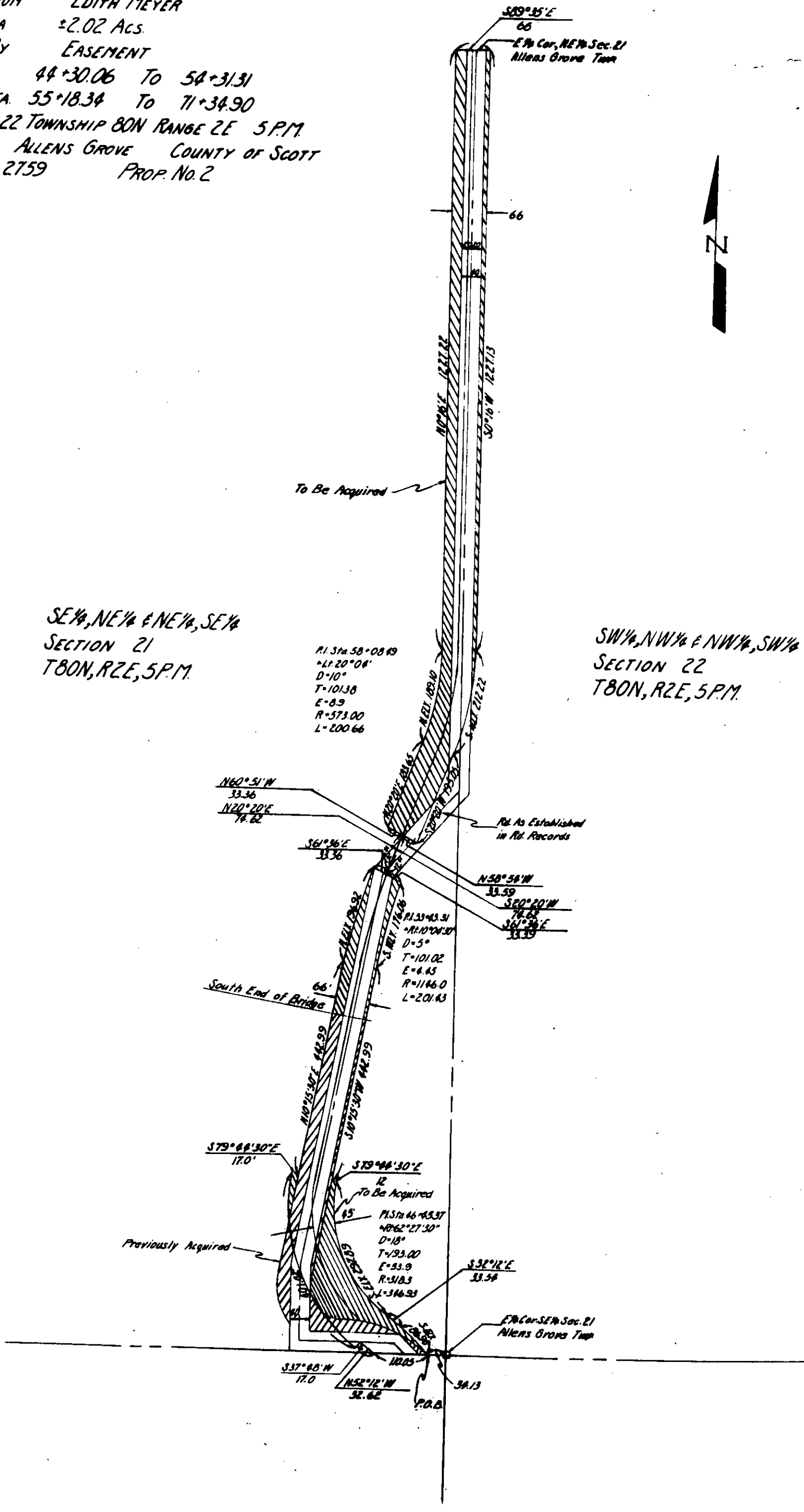


ACQUIRED FROM EDITH MEYER
 R.O.W. AREA ±2.02 Acs.
 ACQUIRED BY EASEMENT
 44+30.06 TO 54+31.31
 FROM @ STA. 55+18.34 TO 71+34.90
 SECTION 21 & 22 TOWNSHIP 80N RANGE 2E 5P.M.
 TOWNSHIP ALLENS GROVE COUNTY OF SCOTT
 PROJECT No. 2759 PROP. No. 2



SE 1/4, NE 1/4 & NE 1/4, SE 1/4
 SECTION 21
 T80N, R2E, 5P.M.

SW 1/4, NW 1/4 & NW 1/4, SW 1/4
 SECTION 22
 T80N, R2E, 5P.M.



SCALE = 1" = 200'