

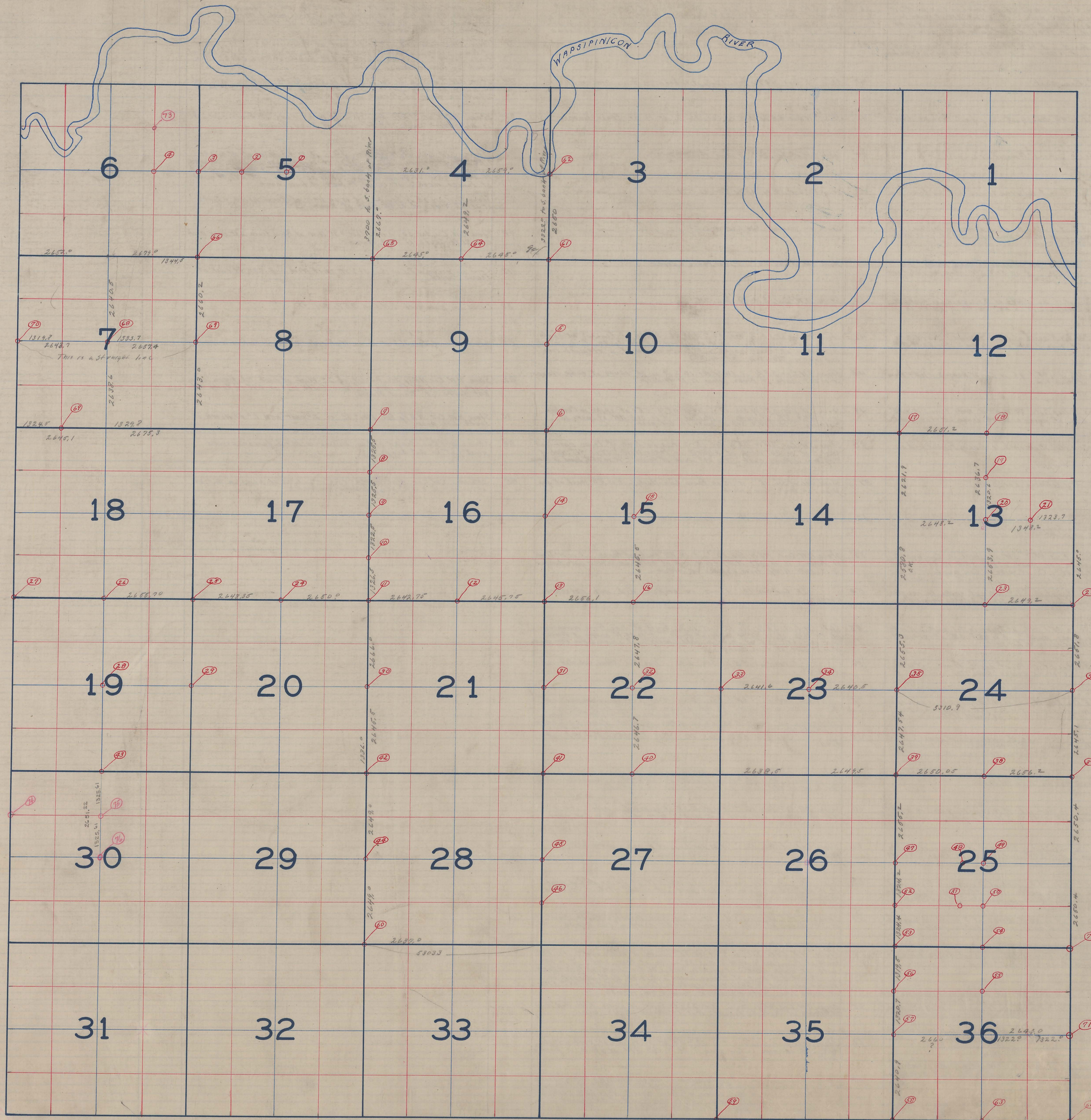
BUTLER

TOWNSHIP

1	Stone	near Cor. post	30	Gas pipe SE Cor. NE 1/4 Sec. 20; it is 30' West of hedge east side of road; it is on line of Hedge West	59	Stone SW Cor. Sec. 35; it is about 2' between road fences
2	Iron bar	NW Cor. NE 1/4 of SW 1/4 Sec. 5	31	Stone SE Cor. NE 1/4 Sec. 21 no ties	60	Gas pipe NW Cor. Sec. 33; it is 49' NW of spike in maple; it is 4 1/2' SW of spike in hedge stump; it is 56 1/2' SE of spike in apple tree; it is 36 1/2' NE of spike in hedge Cor. post
3	Iron bar	NW Cor. SW 1/4 Sec. 5	32	Gas pipe Ctr. of Sec. 22; it is 1 1/2' South of Ctr. of 5" hedge Cor. post	61	Stone SW Cor. Sec. 3; it is 10' South of fence and it is 6755' east of a gas pipe in a road which said gas pipe is 2 1/2' ft. east of east fence; stone is on E. of Road produced east
4	Cone Monument	NW Cor. NE 1/4 of SW 1/4 Sec. 1	33	Stone SW Cor. NW 1/4 Sec. 23; it is 43.9' South of spike in Catterwood; it is 22.3' east of spike in Walnut and it is 3' North of fence West	62	Gas pipe 2650' Ft. North of stone (D) and 70'00' from SW line SW 1/4 Sec. 4; it did not go to enough trouble to determine if it is D.V. for corner P.R.
5	Stone	NW Cor. of SW 1/4 Sec. 10; it is above ground in ditch on fence line east; it is 59.4' NE of spike in Cor. post; it is 61.5' west of spike in 1' Box elder; it is 81' east of spike in willow	34	Stone Ctr. of Sec. 23; it is 40' South of gas pipe; it is 40' North of gas pipe; it is on fence line North & South	63	Stone SW Cor. SE 1/4 Sec. 36; it is in a between fences & is 33' north of gas pipe
6	Stone	SW Cor. of Sec. 10; it is 92' SW of 2 spikes in Tel. pole; it is 95 1/2' SE of 2 spikes in Tel. pole; it is 96' NE of spike in large catterwood	35	Stone SW Cor. NW 1/4 Sec. 24; it is 56.9' SW of gas pipe by steel post; it is 49.9' SE of spike in Tel. pole	64	Gas pipe SW Cor. SE 1/4 Sec. 4; it is 79.9' SW of 8' apple tree; it is 20.8' South of fence; it is 20.8' north of fence; it is 43' SW of spike in gate post; 41.2' NW of spike in Tel. pole; 40.9' NE of spike in Cor. post
7	Stone	SW Cor. Sec. 9; it is 82' NW of spike in power pole; it is 48.3' SE of spike in hedge post; it is 34.5' SW of spike in Tel. pole; it is 45.0' NE of spike in Tel. pole	36	Stone SE Cor. NE 1/4 Sec. 24; it is 60' west of gas pipe; it is 30' east of gas pipe	65	Gas pipe SW Cor. Sec. 4; it is 36' SW of iron post; it is 18 1/2' north of 2 spikes in Tel. pole; it is 49.7' NE of spike in hedge post
8	Stone	SW Cor. NW 1/4 of NW 1/4 of Sec. 16; it is 23' East of West fence; it is 31' west of east fence; it is on fence line West; it is 12' deep	37	Stone SE Cor. Sec. 24; it is 40.1' SE of spike in Cor. post; it is 36.8' SW of spike in Cor. post; it is 47.2' NW of spike in Cor. post; it is 39.9' NE of spike in Cor. post	66	Stone NE Cor. Sec. 7; it is 1.7' north of Cor. post; it is on line of hedge stump east & west
9	Stone	SW Cor. NW 1/4 Sec. 16; it is 31.4' west of S. fence post; it is 29' east of spike in hedge; it is 49.5' east of spike in fence post; it is 28' SE of spike in hedge fence; it is 23.8' North of fence west	38	Stone SW Cor. SE 1/4 Sec. 24; it is 40' North of gas pipe; it is on fence line S. it is 29.2' SW of spike in catterwood; it is 25.8' SW of spike in maple; it is 26.2' SE of 2 spikes in Maple	67	Stone NE Cor. SE 1/4 Sec. 2; it is 1.5' South of road fence; it is on line of Cor. post
10	Stone	NW Cor. of NW 1/4 of SW 1/4 Sec. 16; it is 30' from both fences and is on line of fence east	39	Stone SW Cor. Sec. 24; it is 53.6' NW of spike in apple tree; it is 34.9' east of spike in Box elder	68	Stone Ctr. Sec. 7; it is in a of fences and on line of fence north & south
11	Gas pipe	SW Cor. Sec. 14; it is 52.1' NW of spike in hedge; it is 85.1' SW of spike in 16' maple; it is 44.9' SE of spike in Cor. post	40	Stone SW Cor. SE 1/4 Sec. 24; it is SW of Cor. post; it is 8' deep	69	Stone SW Cor. SE 1/4 of SW 1/4 Sec. 7; it is 2' East of post; it is 6' deep
12	Stone	SW Cor. SE 1/4 Sec. 16; it is 53' north of gas pipe; it is 33' South of gas pipe and is 77.2' South of Cor. post	41	Stone SW Cor. Sec. 22; it is 17' east of spike in tree; it is 27.3' NE of spike in Cor. post; it is 31' SE of spike in 8' tree; 44.5' SW of spike in Apple tree; 43.0' NW of spike in Apples tree	70	Stone SW Cor. NW 1/4 Sec. 7; it is on line of NW fence
13	Wood Stake	SE Cor. Sec. 16; it is 45' SW of spike in Cor. post; it is 37.2' NW of spike in Tel. pole; it is 37.9' SE of spike in Tel. pole	42	Stone SW Cor. Sec. 21; it is 75.5' SW of spike in stump; it is 48.4' SE of spike in hedge; it is 50.4' NW of spike in hedge post; it is 40.4' West of fence spike in hedge post	71	Stone SE Cor. NE 1/4 Sec. 36; it is 27.7' E and 21' West of fence; it is 26.4' East of spike in Hedge tree; it is 22.6' SW of spike in Tel. pole; it is 31.0' W of spike in Box elder
14	Stone	NW Cor. SW 1/4 Sec. 16; it is 23.9' west of cross on Rock; it is 31' east of spike in post; it is 33.9' NE of spike in fence post	43	Stone SW Cor. SE 1/4 Sec. 17; it is on line of willow south; it is 3.6' South of fence post; it is 27.2' South of fence and; it is 11' North of fence east; it is 35' east of fence west; it is 3 1/2' south of willow	72	Stone NE Cor. Sec. 36; See Princeton Twp
15	Stone	Ctr. of Sec. 15; it is between 2 Cor. posts; it is about 6" deep	44	Gas pipe SE Cor. NE 1/4 Sec. 29; it is 30.1' west of spike in hedge stump; it is 33' east of gas pipe; it is 40.4' NW of spike in hedge stump	73	Cross on Ball of Railroad rail NE Cor. of SW 1/4 of NE 1/4 Stone is missing; Cross is 35.8' SW of nail in Maple; it is 42.5' SW of nail in Elm; it is 33.42' NW of nail in Oak; it is 19.28' N of nail in Oak; Established by HIGHWAY COMMISSION APR. 21-1939 - J.C. BRANDT & HOWARD PORTER
16	Stone	SW Cor. SE 1/4 Sec. 15; it is 3' deep; it is 5 1/2' South of center of Cor. post; it is 1 1/2' ft. West of fence north	45	Stone SE Cor. NE 1/4 Sec. 28; it is 38' NE of spike in Tel. pole; it is 34.9' SW of spike in Cor. post; it is 30' west of Cor. post	74	CONC MONT SEE BOOK 215 PAGE 5
17	Stone	NW Cor. Sec. 12; it is 35.3' NW of spike in Tel. pole; it is 68' SE of spike in apple tree; it is 71.7' NW of spike in power pole; it is 20' West of spike in NW fence; it is 52' E of fence in	46	Stone SW Cor. NW 1/4 of SW 1/4 Sec. 27; it is 81.9' west of spike in catterwood; it is 46.3' NE of spike in Tel. pole; it is 34' SE of spike in fence post	75	CONC MONT SEE BOOK 215 PAGE 5
18	Gas pipe	NW Cor. NE 1/4 Sec. 13; it is 17.2' west of present Cor. post and it is on line (D) (B) produced West	47	Stone SW Cor. NW 1/4 Sec. 26; it is on fence line east; it is 30' west of hedge south; it is 81' east of west fence	76	CONC MONT SEE BOOK 215 PAGE 5
19	Stone	NW Cor. SW 1/4 NE 1/4 Sec. 13	48	Stone at dead corner		
20	Stone	Ctr. of Sec. 13; it is 47.4' East of spike in Black locust; it is 73.9' NW of East end of Bearing pin at NE. Cor. of Bridge	49	Stone Ctr. of Sec. 25; it is 18' deep; it is 21' South and 8' east of Cor. post		
21	Stone	NW Cor. NE 1/4 SE 1/4 Sec. 13; it is about 7' north of Cor. post; it is about 8' deep	50	Stone SW Cor. of NW 1/4 of SE 1/4 Sec. 25; it is 11.1' North and 3' west of east of hedge		
22	Stone	SE Cor. Sec. 13; it is 1' E of fence; it is 50' S of gas pipe on fence; it is 20' S of fence E & W; it is	51	Stone at dead corner		
23	Stone	SW Cor. SE 1/4 Sec. 13	52	Stone NW Cor. SW 1/4 of SW 1/4 Sec. 25; it is on hedge line east; it is 28' West of fence and 27 1/2' ft. east		
24	Stone	SW Cor. SE 1/4 Sec. 12; it is 33' north of gas pipe; it is 37' South of gas pipe; it is 31.7' S. Ely from 2 spikes in apple tree	53	Stone SW Cor. Sec. 25; it is 40.7' W of NW Cor. of Barn foundation; it is 82.9' NW of SW Cor. of Barn foundation; it is 6" deep		
25	Stone	SW Cor. Sec. 17; it is 23' North of gas pipe; it is on line of fence South	54	Stone SW Cor. SE 1/4 Sec. 26; it is 7.7' ft. north of fence east; it is on line of hedge; it is 146' South of fence west		
26	Stone	SW Cor. SE 1/4 Sec. 18; it is 124.6' west of spike in west edge of paving; it is 83.4' NE of spike in Wood elm; it is 112.3' S. Ely from spike in locust	55	Stone SW Cor. NW 1/4 of NE 1/4 Sec. 34; it is 7 1/2' north and 4.8' east of Cor. post		
27	Stone	SW Cor. Sec. 18	56	Stone SW Cor. NW 1/4 of NW 1/4 of Sec. 36; it is 29' west of fence; it is 21' east of fence and is 36' South of fence post		
28	Stone		57	Stone SW Cor. NW 1/4 Sec. 36; it is 20' west of fence; it is 30 1/2' east of fence; it is 4 1/2' ft. North of fence west		
29	Stone	SE Cor. NE 1/4 Sec. 19; it is on West side of Cor. post	58	Stone SW Cor. Sec. 36; it is 19.5' South of fence west; it is 25 1/2' north of fence west and east; it is 21 1/2' South of fence east; it is 48.4' NE of spike in tree; it is 54.8' NW of spike in Cor. post		

T. 80 N. R. 4 E. OF 5TH P. M.

BUTLER TOWNSHIP



2172  
2173  
2174  
2175  
2176  
2177  
2178  
2179  
2180  
2181  
2182  
2183  
2184  
2185  
2186  
2187  
2188  
2189  
2190  
2191  
2192  
2193  
2194  
2195  
2196  
2197  
2198  
2199  
2200

2172  
2173  
2174  
2175  
2176  
2177  
2178  
2179  
2180  
2181  
2182  
2183  
2184  
2185  
2186  
2187  
2188  
2189  
2190  
2191  
2192  
2193  
2194  
2195  
2196  
2197  
2198  
2199  
2200