

UNITED STATES PUBLIC LAND SURVEY CORNER CERTIFICATE

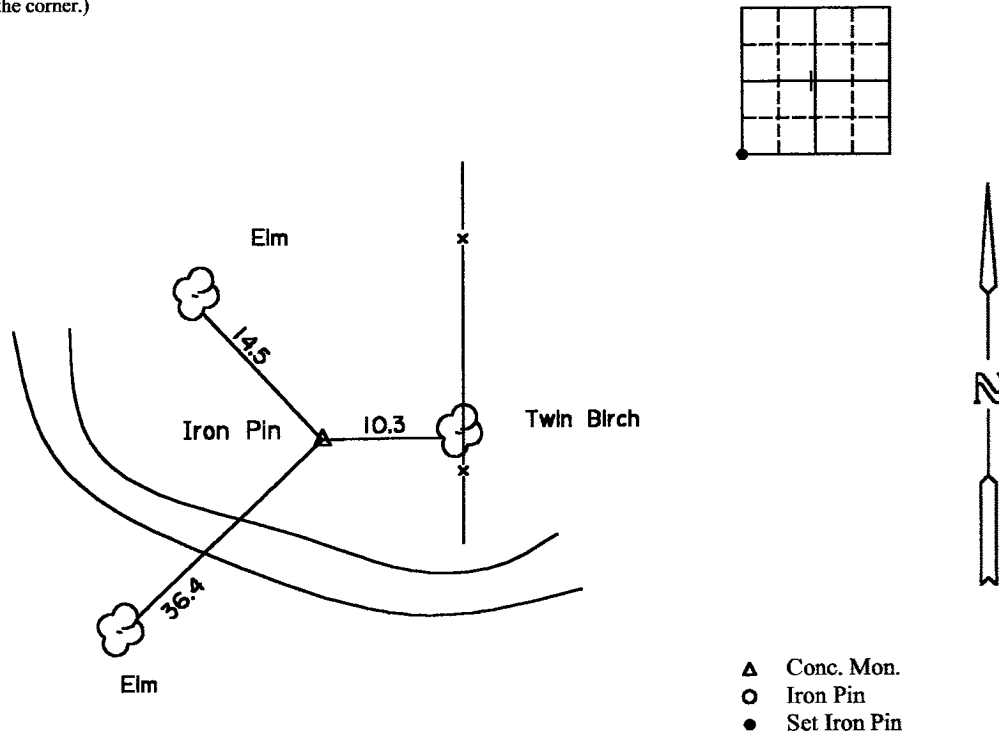
OF

Land Survey Monuments situated in Section 1, Township T-80N, Range R-4E, of the Fifth Principal Meridian, SCOTT County, Iowa.
 Previously recorded in _____ in County Recorder's Office.
(book, page, document number, etc.)

(Show reason for preparing this certificate, the evidence and detailed procedures used in establishing the corner positions and monumentation found or placed.)
 Monument Description and Remarks: SCOTT COUNTY TIE BOOKS

PLAN - VIEW

(Show a minimum of three reference ties to durable physical objects, relevant monuments and physical conditions that will enable recovery of the corner.)



- ▲ Conc. Mon.
- Iron Pin
- Set Iron Pin

| List Corners to be Indexed | | | |
|----------------------------|---------|-----|-------|
| Corners | Section | Twp | Range |
| SW. Cor. | 1 | 80N | 4E |

PREPARED BY: GARY WHITACRE, MARTIN & WHITACRE SURVEYORS & ENGINEERS,
 P.O. BOX 413, MUSCATINE, IOWA 52761 / PHONE: 563-263-7691

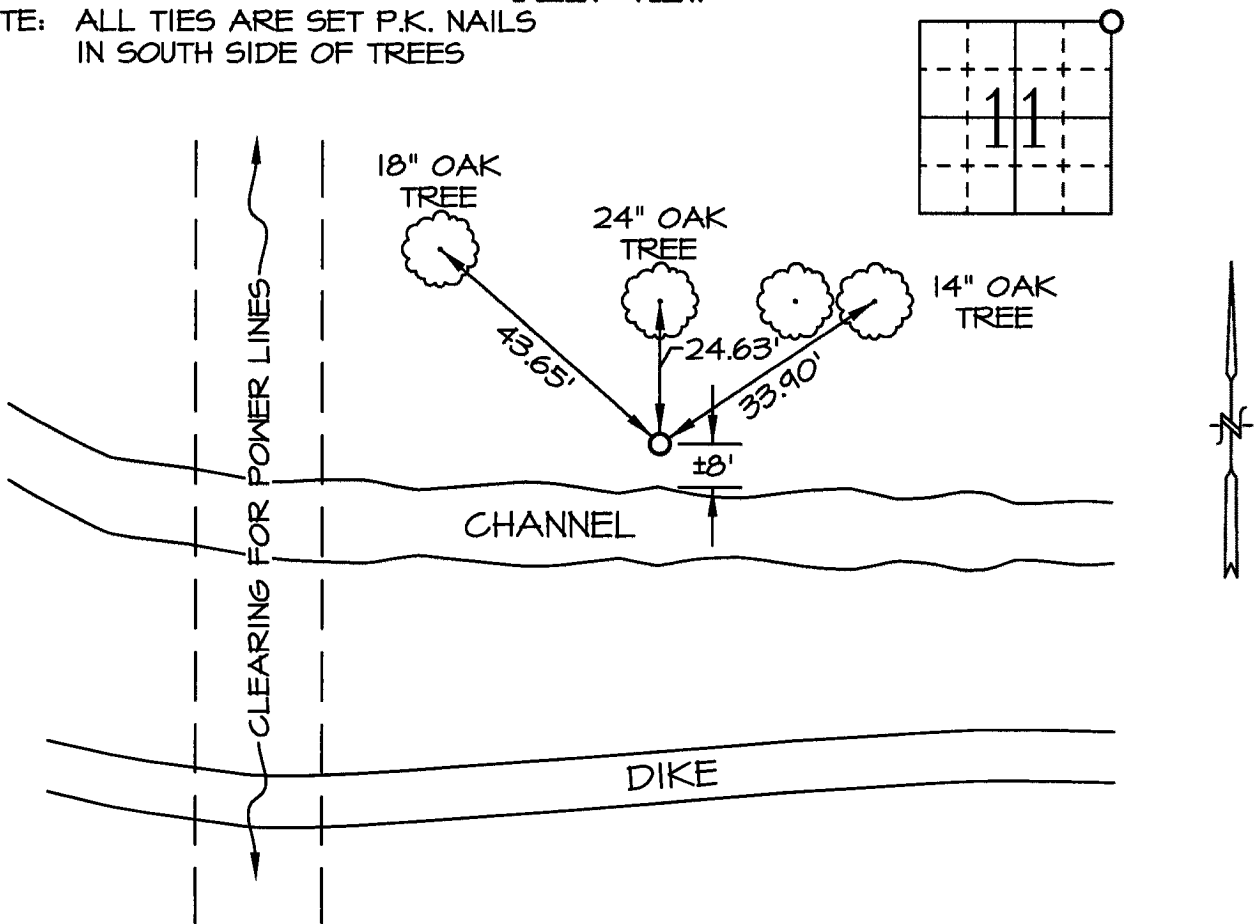
UNITED STATES PUBLIC LAND SURVEY CORNER CERTIFICATE OF

Land Survey Monuments situated in Section 11, Township T80N, Range R4E, of the Fifth Principal Meridian, SCOTT County, Iowa
 Previously recorded in in County Recorder's Office.

Monument Description and Remarks: SET 1/2" REBAR WITH CAP AT RECORD DISTANCE FROM NORTH 1/4 CORNER AND EAST 1/4 CORNER. NO PREVIOUS TIES ON FILE.

PLAN-VIEW

NOTE: ALL TIES ARE SET P.K. NAILS IN SOUTH SIDE OF TREES



Date: 1/30/02 M&W: Book SCOTT CO. #2 Page 76 Job No. 5820.01

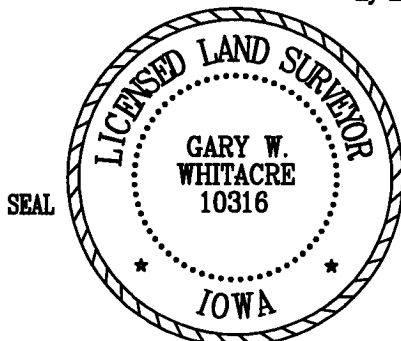
I hereby certify that the survey work was completed and this certificate was prepared by me or under my direct personal supervision and that I am a duly licensed land surveyor under the laws of the state of Iowa.

Signature: GARY W. WHITACRE
 Gary W. Whitacre

Date: 2.2.02 License No. LS10316
 My License Expires 12/31/2003.

List Corners to be Indexed

| Corners | Section | Twp | Range |
|---------|---------|------|-------|
| NE | 11 | T80N | R4E |



SEAL