

UNITED STATES PUBLIC LAND SURVEY CORNER CERTIFICATE

OF

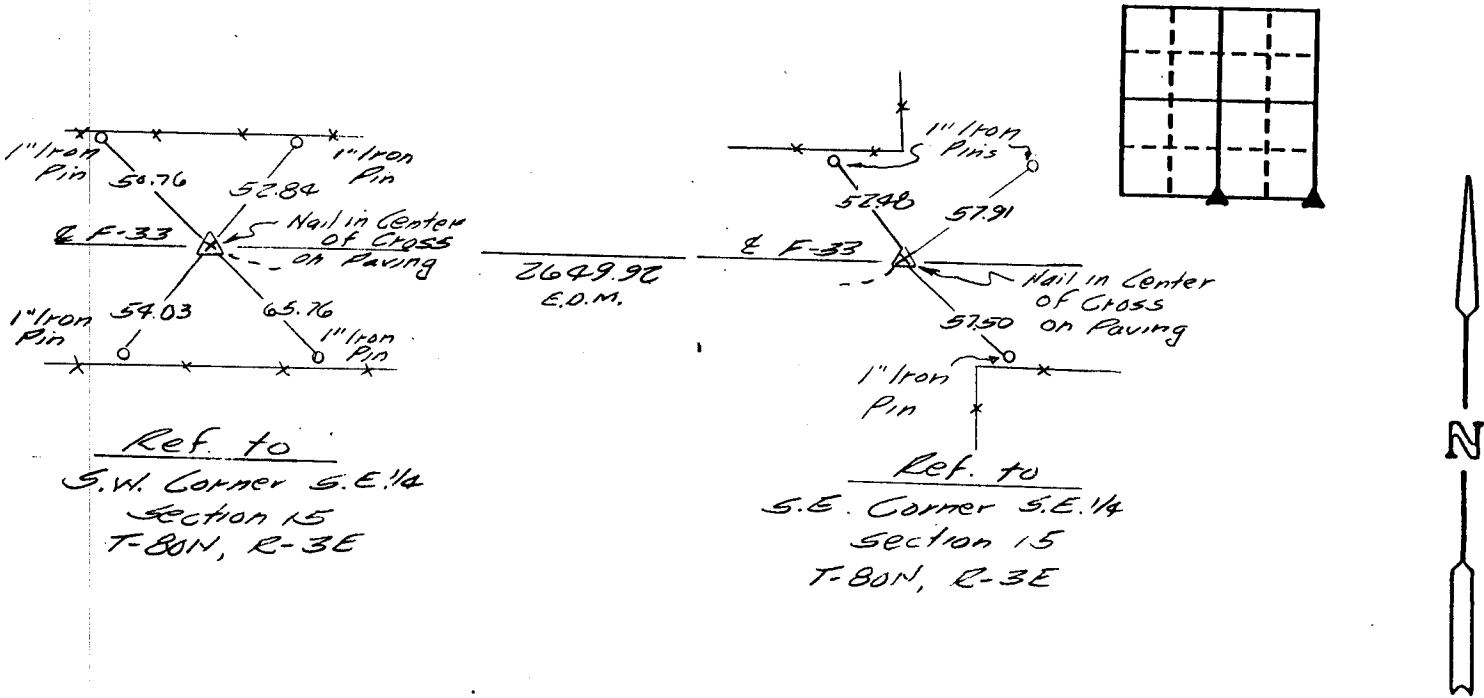
Land Survey Monuments situated in Section 15, Township 80, Range 3, of the Fifth Principal Meridian, Scott County, Iowa.
 Previously recorded in Book Does Not Apply, Page Does Not Apply

(Show reason for preparing this certificate, the evidence and detailed procedures used in establishing the corner positions and monumentation found or placed.)

Monument Description and Remarks: Found Nail in center of cross cut in the Concrete paving. References obtained from the Scott County Engineers Office checked what was found.

PLAN - VIEW

(Show a minimum of three reference ties to durable physical objects. relevant monuments and physical conditions that will enable recovery of the corner.)



I hereby certify that the survey work was completed and this certificate was prepared by me or under my direct personal supervision and that I am a duly registered land surveyor under the laws of the state of Iowa.

Marvin E. Hinkle
 Marvin E. Hinkle

REGISTERED LAND SURVEYOR NO. 4204

DATE: October 3, 1990

List Corners to be Indexed

Corners	Section	Twp	Range
S.W. Cor. S.E. 1/4	15	80	3
S.E. Cor. S.E. 1/4	15	80	3

SEAL