

02

1499-04

04 FEB 25 AM 9:32

11 06
Stanger
RECORDER

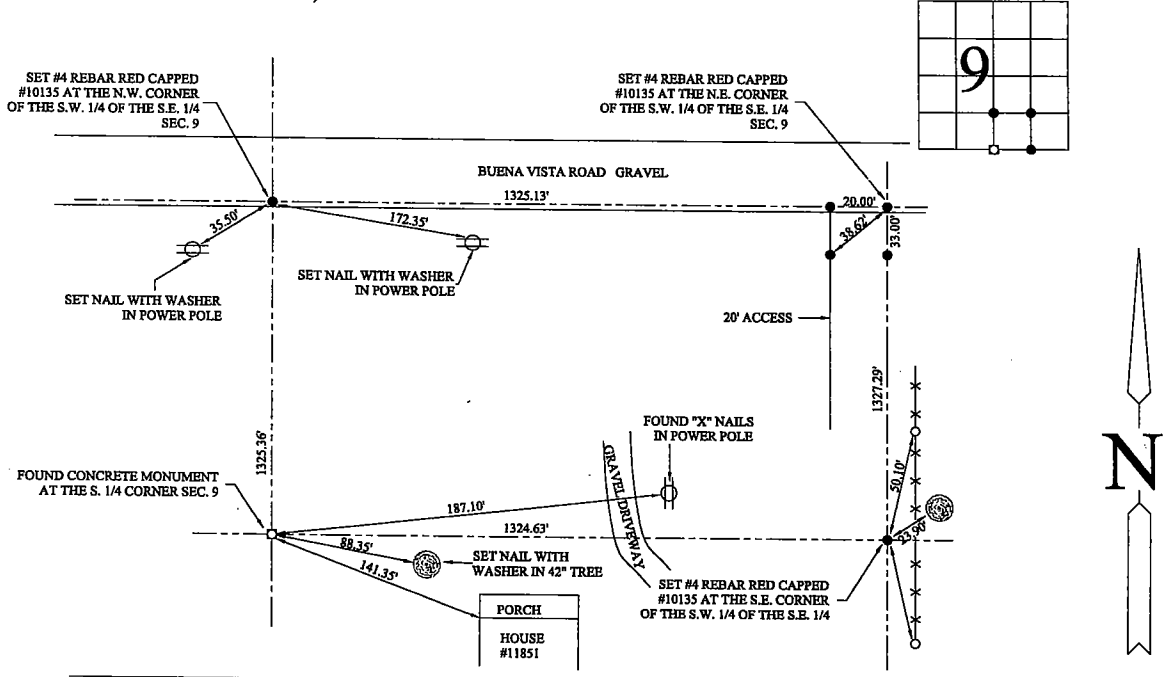
CRAPNELL LAND SURVEYING COMPANY / MAJOR ENGINEERING 814 E. RIVER DRIVE DAVENPORT, IOWA (563)336-3256
UNITED STATES PUBLIC LAND SURVEY CORNER CERTIFICATE

OF
Land Survey Monuments situated in Section 9, Township 80, Range 2E
of the Fifth Principal Meridian, CLINTON County, Iowa.
Previously recorded in _____ in County Recorder's Office

(Show reason for preparing this certificate, the evidence and detailed procedures used in establishing the corner positions and monumentation found or placed.)
Monument Description and Remarks: SET #4 REBAR RED CAPPED #10135 AT THE NW CORNER OF THE SW 1/4 OF THE SE 1/4 SEC. 9
FOUND CONCRETE MONUMENT AT THE S 1/4 CORNER SEC. 9
SET #4 REBAR RED CAPPED #10135 AT THE NE CORNER OF THE SW 1/4 OF THE SE 1/4 SEC. 9
SET #4 REBAR RED CAPPED #10135 AT THE SE CORNER OF THE SW 1/4 OF THE SE 1/4 SEC. 9
MONUMENTS SET BY USING STANDARD SECTION BREAKDOWN

PLAN - VIEW

(SHOW A MINIMUM OF THREE REFERENCE TIES TO DURABLE PHYSICAL OBJECTS, RELEVANT MONUMENTS AND PHYSICAL CONDITIONS THAT WILL ENABLE RECOVERY OF THE CORNER.)



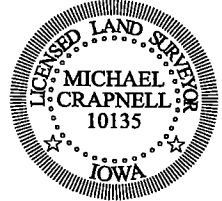
I HEREBY CERTIFY THAT THIS LAND SURVEYING DOCUMENT WAS PREPARED AND THE RELATED SURVEY WORK WAS PERFORMED BY ME OR UNDER MY DIRECT PERSONAL SUPERVISION AND THAT I AM A DULY LICENSED LAND SURVEYOR UNDER THE LAWS OF THE STATE OF IOWA.

Signature: *[Signature]*
Name typed or printed: MICHAEL D. CRAPNELL

Date: 1-22-04 Reg.No. 10135

My registration renewal date is December 31, 2004

SEAL



List Corners to be Indexed

Corners	Section	Twp	Range
NW CORNER	9	80	2E
SW 1/4, SE 1/4			
S 1/4 CORNER	9	80	2E
SE CORNER	9	80	2E
SW 1/4, SE 1/4			
NE CORNER	9	80	2E
SW 1/4, SE 1/4			

UNITED STATES PUBLIC LAND SURVEY CORNER CERTIFICATE

OF

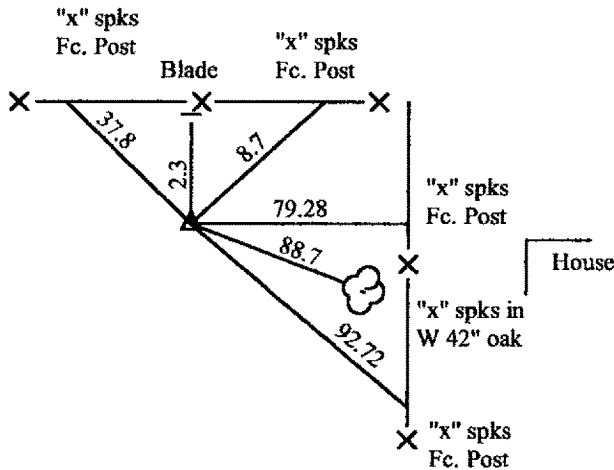
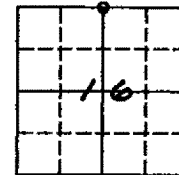
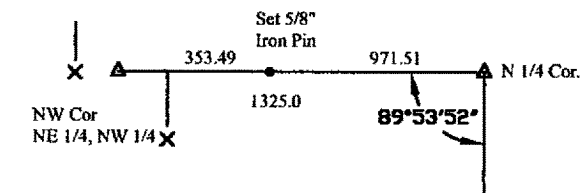
Land Survey Monuments situated in Section 16, Township T-80N, Range R-2E, of the Fifth Principal Meridian, SCOTT County, Iowa.
 Previously recorded in _____ in County Recorder's Office.
(book, page, document number, etc.)

(Show reason for preparing this certificate, the evidence and detailed procedures used in establishing the corner positions and monumentation found or placed.)

Monument Description and Remarks: SCOTT COUNTY TIE BOOKS

PLAN - VIEW

(Show a minimum of three reference ties to durable physical objects, relevant monuments and physical conditions that will enable recovery of the corner.)



Found
 Oct 2/74
 12" Deep



- ▲ Conc. Mon.
- Iron Pin
- Set Iron Pin

List Corners to be Indexed			
Corners	Section	Twp	Range
NW Cor.	16	80N	2E
NE 1/4 NW 1/4			
N 1/4 COR.			