

UNITED STATES PUBLIC LAND SURVEY CORNER CERTIFICATE

OF

and Survey Monuments situated in Section 10, Township 80 North, Range 2 East, of the Fifth Principal Meridian, Clinton County, Iowa. Previously recorded in _____ does not apply _____ In County Recorder's Office.

(book, page, document number, etc.)
Show reason for preparing this certificate, the evidence and detailed procedures used in establishing the corner positions and monumentation found or placed.)

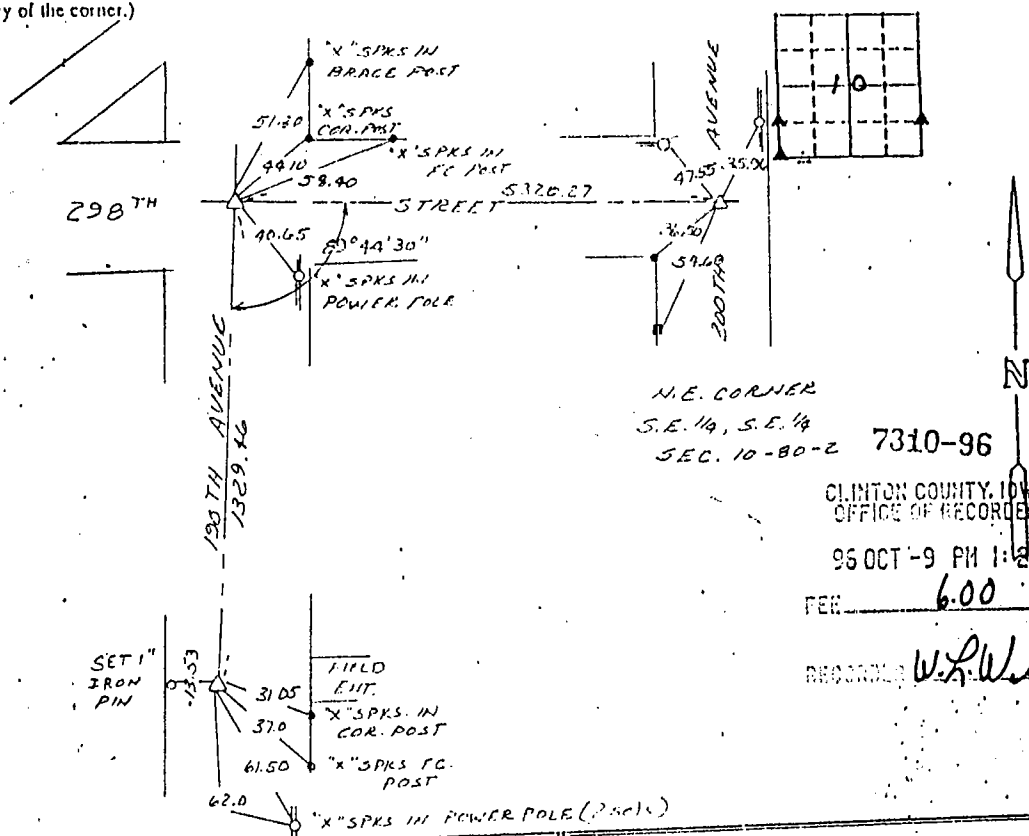
Monument Description and Remarks: N.W. Cor. S.W. 1/4, S.W. 1/4 - Found 5/8" iron pin
w/Cap 4" deep. S.W. Cor. S.W. 1/4 - Found Concrete Monument 11" deep.
N.E. Cor. S.E. 1/4, S.E. 1/4 - Found 5/8" iron pin placed identification cap on top 4" deep

Whe

TH AVENUE WA 50723

PLAN - VIEW

Show a minimum of three reference ties to durable physical objects, relevant monuments and physical conditions that will enable recovery of the corner.)



ST CORNER S.E. 1/4 SEC. 1

200

on ng.

N.E. CORNER
S.E. 1/4, S.E. 1/4
SEC. 10-80-2 7310-96

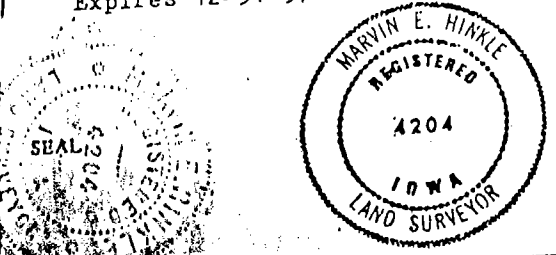
CLINTON COUNTY, IOWA
OFFICE OF RECORDER
95 OCT -9 PM 1:27
REC. 6.00
RECORDED *W.L.Whe*

I hereby certify that the survey work was completed and this certificate was prepared by me or under my direct personal supervision and that I am a duly registered land surveyor under the laws of the state of Iowa.
Signature: *Marvin E. Hinkle*
Name typed or printed: Marvin E. Hinkle
Date: 8-15-96 Reg. No. 4204
Expires 12-31-97

Corners	Section	Typ	Range
N.W. Cor	10	80N	2E
S.W. 1/4, S.W. 1/4			
S.W. Cor.	10	80N	2E
S.W. 1/4			
N.E. COR.	10	80N	2E
S.E. 1/4, S.E. 1/4			

HINKLE
REG
EYOR

FRY
78
E. A
80-787



UNITED STATES PUBLIC LAND SURVEY CORNER CERTIFICATE

OF

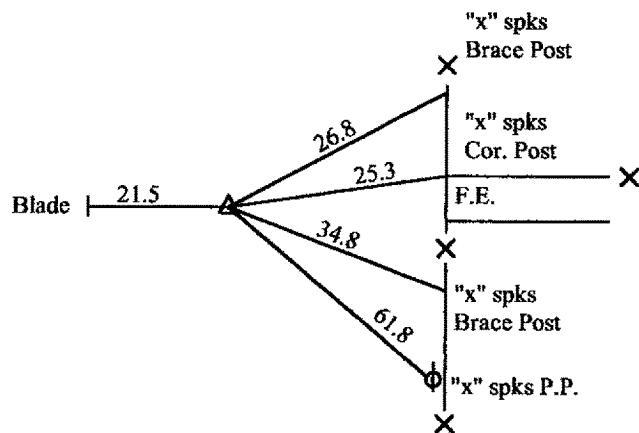
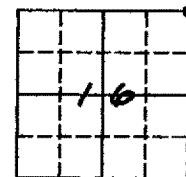
Land Survey Monuments situated in Section 16, Township T-80N, Range R-2E, of the Fifth Principal Meridian, SCOTT County, Iowa.
 Previously recorded in _____ in County Recorder's Office.
(book, page, document number, etc.)

(Show reason for preparing this certificate, the evidence and detailed procedures used in establishing the corner positions and monumentation found or placed.)

Monument Description and Remarks: SCOTT COUNTY TIE BOOKS

PLAN - VIEW

(Show a minimum of three reference ties to durable physical objects, relevant monuments and physical conditions that will enable recovery of the corner.)



Found
 Oct 2/74
 9" Deep
 I.G.S. Bk. 14



- ▲ Conc. Mon.
- Iron Pin
- Set Iron Pin

List Corners to be Indexed			
Corners	Section	Twp	Range
NE. Cor.	16	80N	2E