

UNITED STATES PUBLIC LAND SURVEY CORNER CERTIFICATE

OF

and Survey Monuments situated in Section 10, Township 80 North, Range 2 East, of the Fifth Principal Meridian, Clinton County, Iowa. Previously recorded in [blank] In County Recorder's Office.

Show reason for preparing this certificate, the evidence and detailed procedures used in establishing the corner positions and monumentation found or placed.)

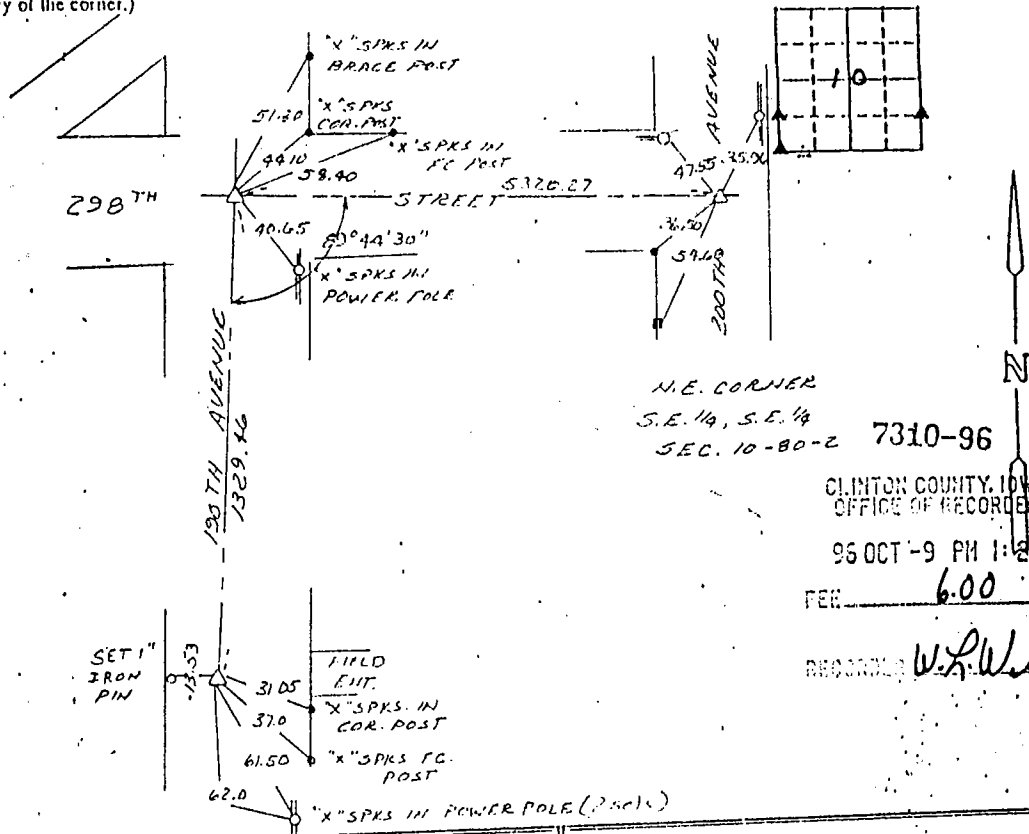
Monument Description and Remarks: N.W. Cor. S.W. 1/4, S.W. 1/4 - Found 5/8" iron pin w/Cap 4" deep. S.W. Cor. S.W. 1/4 - Found Concrete Monument 11" deep. N.E. Cor. S.E. 1/4, S.E. 1/4 - Found 5/8" iron pin placed identification cap on top 4" deep

Whe

TH AVENUE WA 50723

PLAN - VIEW

Show a minimum of three reference ties to durable physical objects, relevant monuments and physical conditions that will enable recovery of the corner.)



ST CORNER S.E. 1/4 SEC. 1

N.E. CORNER S.E. 1/4, S.E. 1/4 SEC. 10-80-2 7310-96

CLINTON COUNTY, IOWA OFFICE OF RECORDER

95 OCT -9 PM 1:27

REC 6.00

RECORDED W.L.W. [Signature]

I hereby certify that the survey work was completed and this certificate was prepared by me or under my direct personal supervision and that I am a duly registered land surveyor under the laws of the state of Iowa.

Signature: Marvin E. Hinkle (Name typed or printed) Date: 8-15-96 Reg. No. 4204 Expires 12-31-97

Corners	Section	Typ	Range
N.W. Cor	10	80N	2E
S.W. 1/4, S.W. 1/4			
S.W. Cor.	10	80N	2E
S.W. 1/4			
N.E. COR.	10	80N	2E
S.E. 1/4, S.E. 1/4			



FRY TBC E. A 80-787

