

UNITED STATES PUBLIC LAND SURVEY CORNER CERTIFICATE

OF

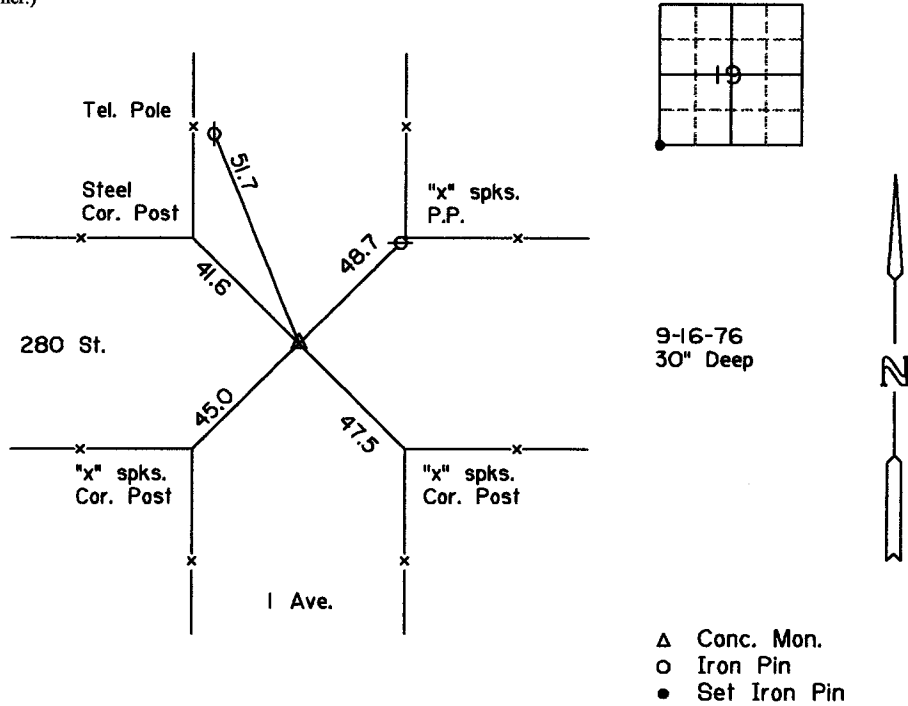
Land Survey Monuments situated in Section 19, Township T-80N, Range R-1E, of the Fifth Principal Meridian, SCOTT County, Iowa. Previously recorded in _____ in County Recorder's Office.

(book, page, document number, etc.)

(Show reason for preparing this certificate, the evidence and detailed procedures used in establishing the corner positions and monumentation found or placed.)
 Monument Description and Remarks: SCOTT COUNTY TIE BOOKS

PLAN - VIEW

(Show a minimum of three reference ties to durable physical objects, relevant monuments and physical conditions that will enable recovery of the corner.)



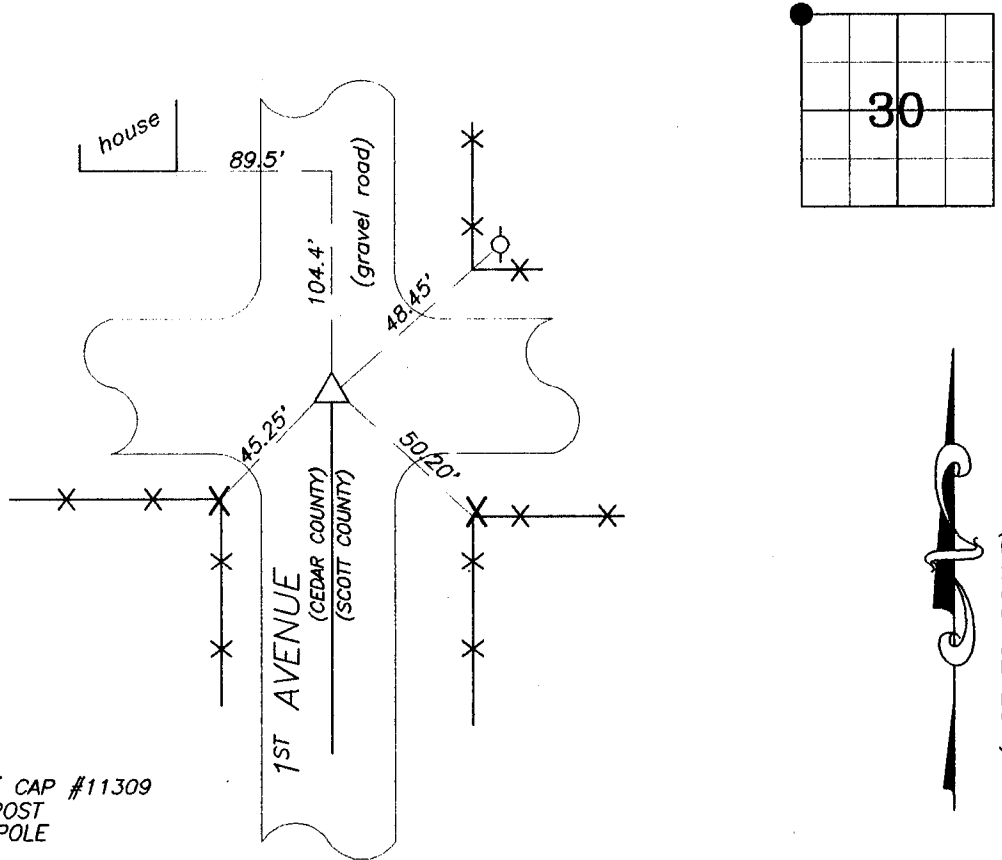
- Δ Conc. Mon.
- Iron Pin
- Set Iron Pin

List Corners to be Indexed			
Corners	Section	Twp	Range
SW. Cor.	19	80N	1E

UNITED STATES PUBLIC LAND SURVEY CORNER CERTIFICATE OF

Land Survey Monuments situated in Section 30 Township 80 NORTH Range 1 EAST of the Fifth Principal Meridian SCOTT County, Iowa.
 Previously recorded in N/A in County Recorder's Office.
 Monument Description and Remarks: SET 1/2" DIA. REBAR W/ CAP #11309 AT A
DEPTH OF APPROXIMATELY SIX INCHES. SEE ATTACHED SHEET FOR EXPLANATION OF CORNER ESTABLISHMENT.

PLAN - VIEW



LEGEND

- EXISTING FENCE
- 1/2" DIA. REBAR SET W/ CAP #11309
- CROSS NAILS IN FENCE POST
- CROSS NAILS IN POWER POLE

I hereby certify that the survey work was completed and this certificate was prepared by me or under direct personal supervision and that I am a duly licensed land surveyor under the laws of the state of Iowa.

Signature: Jimmy D. Rose
 Jimmy D. Rose Iowa Licensed Land Surveyor No. 11309

Date: June 12, 1997 License No. 11309
 License renewal December 31, 1997

List Corners to be Indexed			
Corners	Section	Twp	Range
NW	30	80N	1E

SEAL

