

UNITED STATES PUBLIC LAND SURVEY CORNER CERTIFICATE

OF

Land Survey Monuments situated in Section 15, Township 80 North, Range 1 East, of the Fifth Principal Meridian, Scott County, Iowa.
Previously recorded in _____ does not apply _____ in County Recorder's Office.

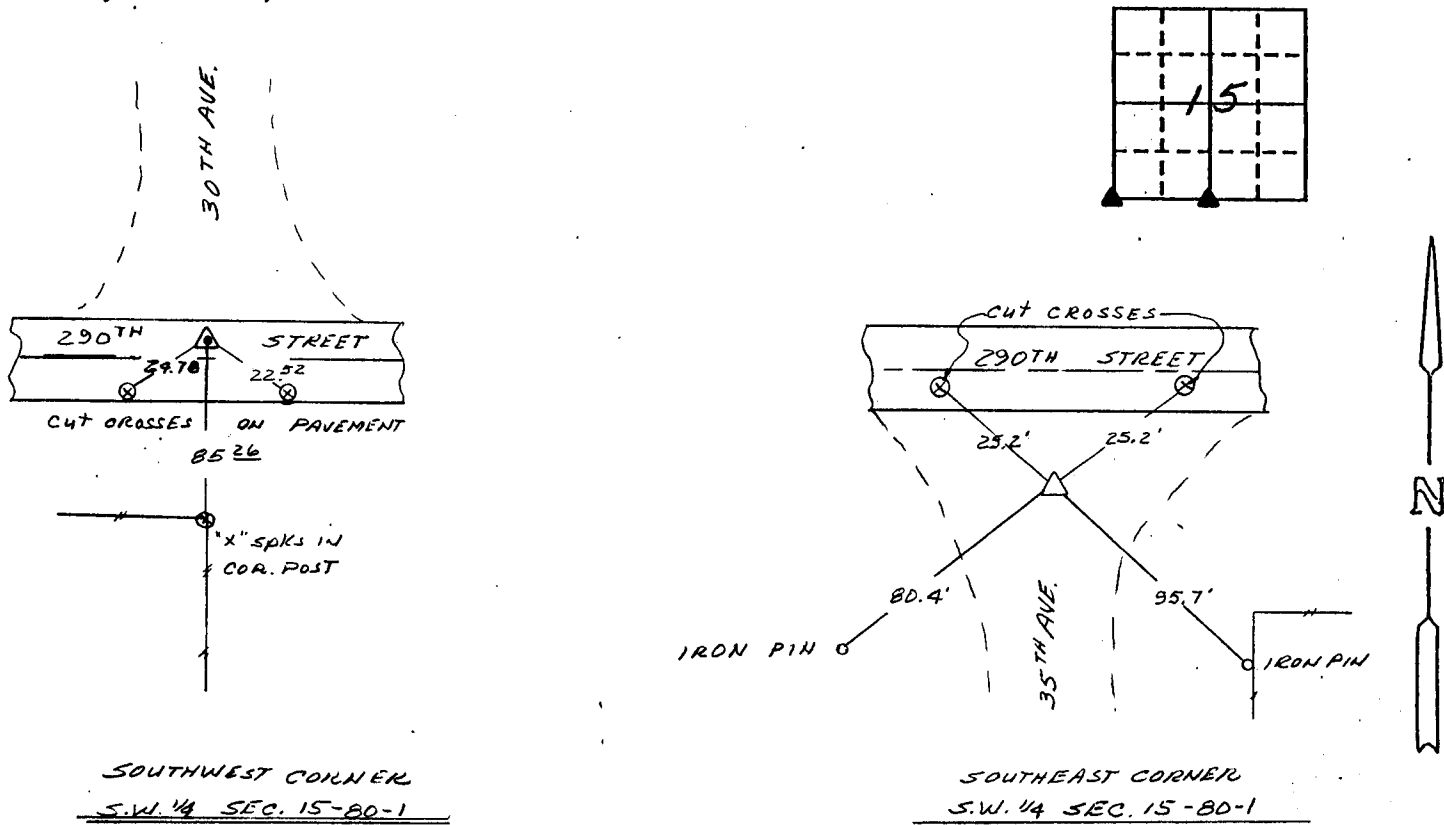
(book, page, document number, etc.)

(Show reason for preparing this certificate, the evidence and detailed procedures used in establishing the corner positions and monumentation found or placed.)

Monument Description and Remarks: Southwest Corner S.W. 1/4 - Cement Nail in concrete road
Southeast Corner S.W. 1/4 - Found Concrete Monument 3.0' deep raised with a 5/8" iron pin w/cap

PLAN - VIEW

(Show a minimum of three reference ties to durable physical objects, relevant monuments and physical conditions that will enable recovery of the corner.)



I hereby certify that the survey work was completed and this certificate was prepared by me or under my direct personal supervision and that I am a duly registered land surveyor under the laws of the state of Iowa.

Signature: Marvin E. Hinkle
Name typed or printed: Marvin E. Hinkle

Date: June 22, 1991 Reg. No. 4204

Corners	List Corners to be Indexed		
	Section	Twp	Range
S.E. Cor. S.W. 1/4	15	80N	1E
S.W. Cor. S.W. 1/4	15	80N	1E

SEAL



UNITED STATES PUBLIC LAND SURVEY CORNER CERTIFICATE

OF

Land Survey Monuments situated in Section 22, Township T-80N, Range R-1E, of the Fifth Principal Meridian, SCOTT County, Iowa. Previously recorded in _____ in County Recorder's Office.

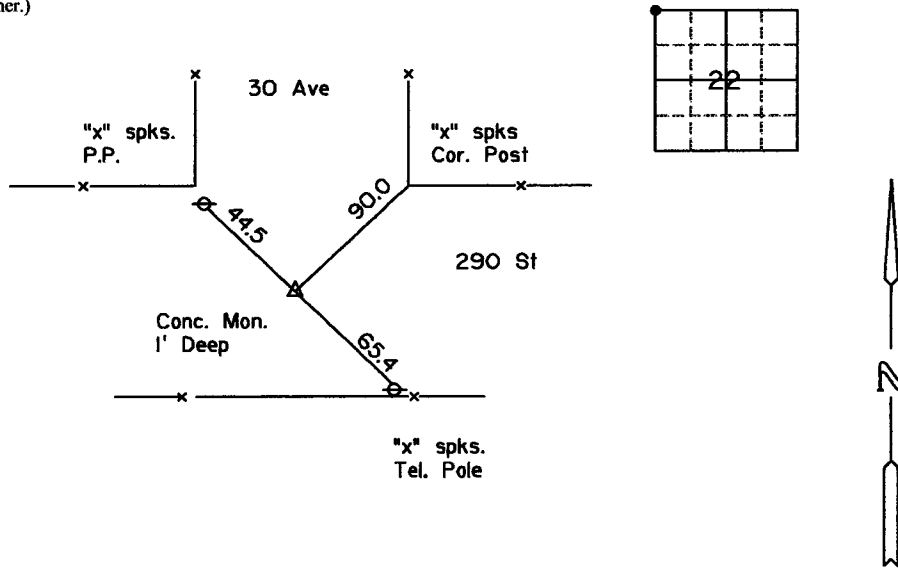
(book, page, document number, etc.)

(Show reason for preparing this certificate, the evidence and detailed procedures used in establishing the corner positions and monumentation found or placed.)

Monument Description and Remarks: SCOTT COUNTY TIE BOOKS

PLAN - VIEW

(Show a minimum of three reference ties to durable physical objects, relevant monuments and physical conditions that will enable recovery of the corner.)



- △ Conc. Mon.
- Iron Pin
- Set Iron Pin

List Corners to be Indexed			
Corners	Section	Twp	Range
NW. Cor.	22	80N	1E