

UNITED STATES PUBLIC LAND SURVEY CORNER CERTIFICATE

OF

Land Survey Monuments situated in Section 4, Township T-80N, Range R-1E, of the Fifth Principal Meridian, SCOTT County, Iowa. Previously recorded in \_\_\_\_\_ in County Recorder's Office.

(book, page, document number, etc.)

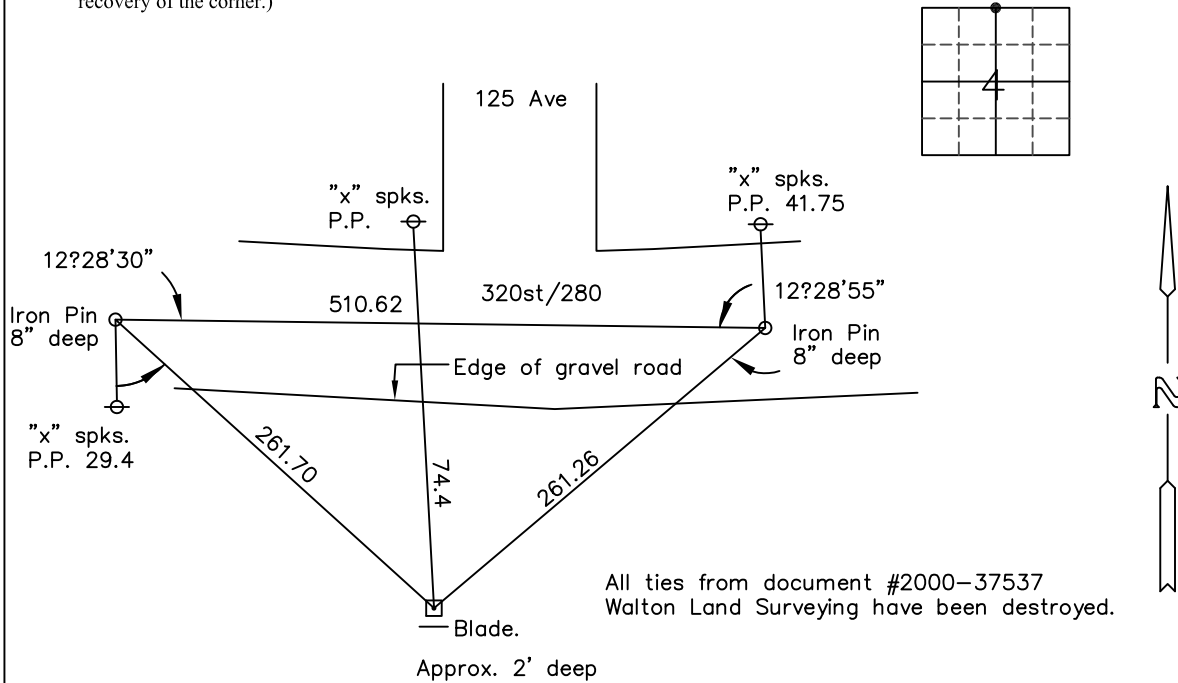
(Show reason for preparing this certificate, the evidence and detailed procedures used in establishing the corner positions and monumentation found or placed.)

Monument Description and Remarks: SCOTT COUNTY TIE BOOKS

Found concrete monument with iron pin 2' above ground in field. Todd VanderHeiden wanted monument lowered to plant crops in field. Set 2 iron pins on a transit line and recorded angle and distance from each pin. Set grader blade below top of monument on S. side of monument.

PLAN - VIEW

(Show a minimum of three reference ties to durable physical objects, relevant monuments and physical conditions that will enable recovery of the corner.)



All ties from document #2000-37537  
Walton Land Surveying have been destroyed.

List Corners to be Indexed

Corners	Section	Twp	Range
N 1/4	4	80N	1E