

UNITED STATES PUBLIC LAND SURVEY CORNER CERTIFICATE

OF

Land Survey Monuments situated in Section 34, Township 81 North, Range 1 East, of the Fifth Principal Meridian, Clinton County, Iowa. Previously recorded in N/A in County Recorder's Office.

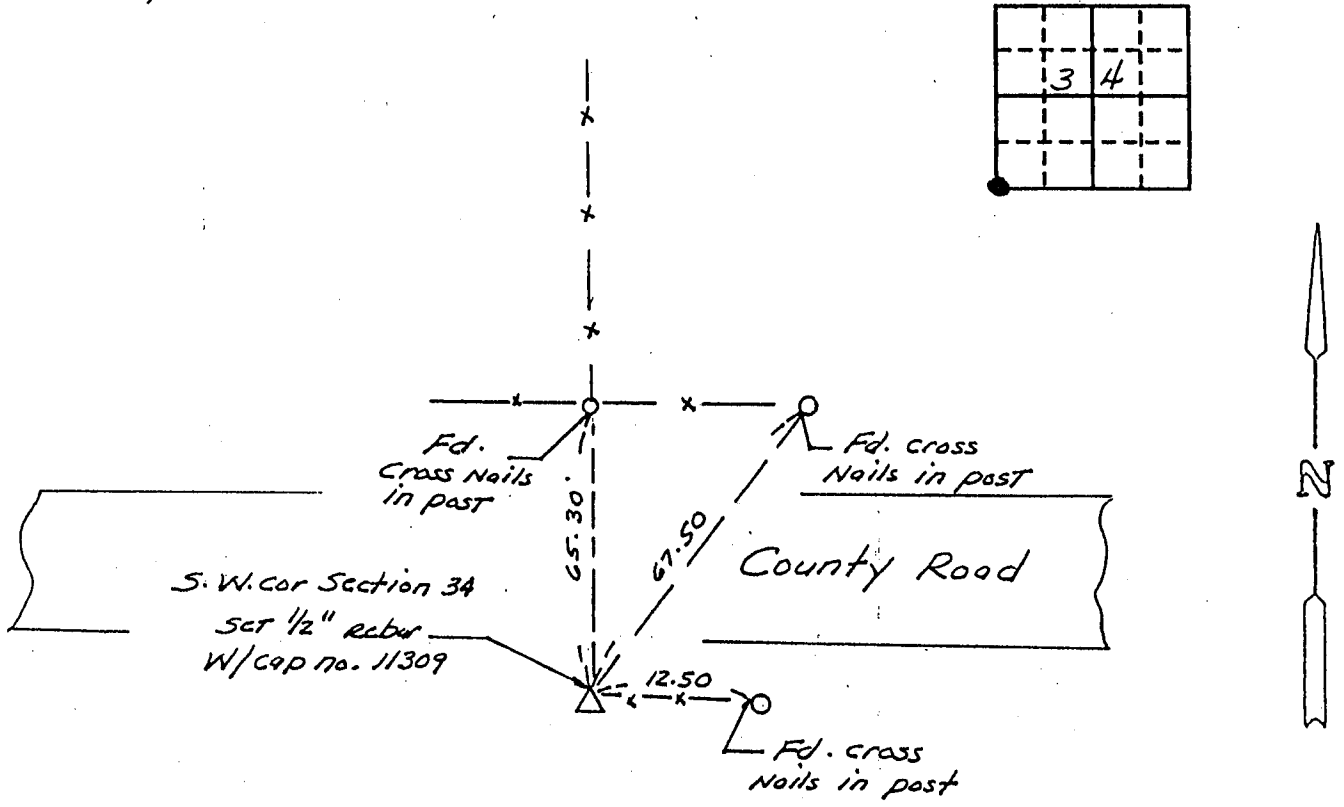
(book, page, document number, etc.)

(Show reason for preparing this certificate, the evidence and detailed procedures used in establishing the corner positions and monumentation found or placed.)

Monument Description and Remarks: Set 1/2" diameter rebar with cap # 11309 at the Southwest Corner of Section 34.

PLAN - VIEW

(Show a minimum of three reference ties to durable physical objects, relevant monuments and physical conditions that will enable recovery of the corner.)



I hereby certify that the survey work was completed and this certificate was prepared by me or under my direct personal supervision and that I am a duly registered land surveyor under the laws of the state of Iowa.

Signature: [Signature]

Name typed or printed: Jimmy D. Rose

Date: October 12, 1994 Reg. No. LS 11309



SEAL

Corners	List Corners to be Indexed		
	Section	Twp	Range
SW Cor	34	81N	1E

7377-94

CLINTON COUNTY, IOWA
OFFICE OF RECORDER

94 OCT 13 AM 10:17

FEE 6.00

RECORDER W. L. Wilke