

UNITED STATES PUBLIC LAND SURVEY CORNER CERTIFICATE

OF

Land Survey Monuments situated in Section 31, Township T-79N, Range R-5E, of the Fifth Principal Meridian, SCOTT County, Iowa. Previously recorded in _____ in County Recorder's Office.

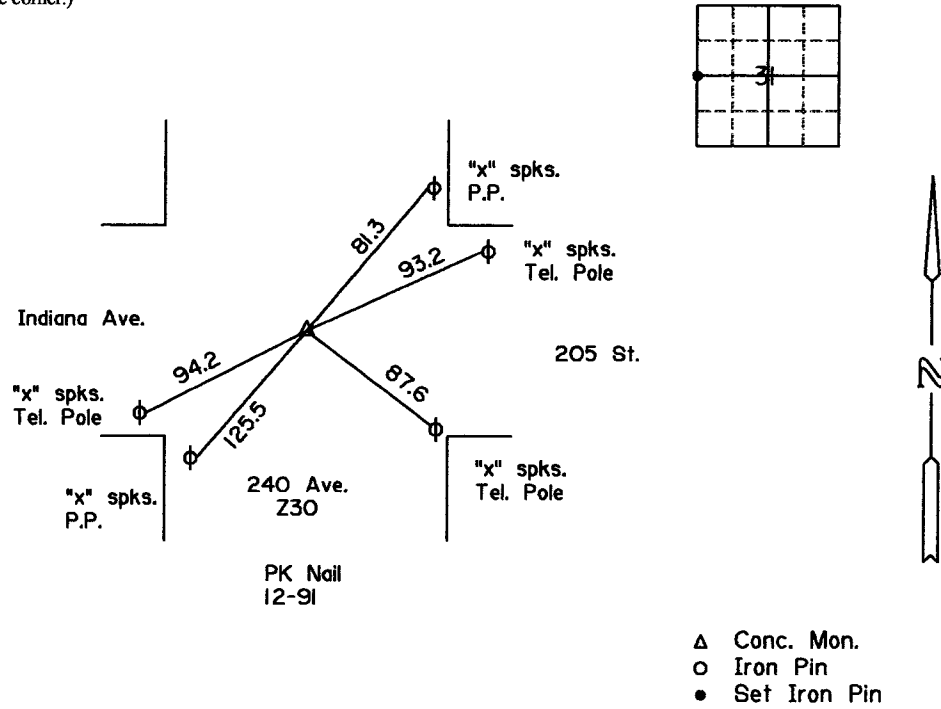
(book, page, document number, etc.)

(Show reason for preparing this certificate, the evidence and detailed procedures used in establishing the corner positions and monumentation found or placed.)

Monument Description and Remarks: SCOTT COUNTY TIE BOOKS

PLAN - VIEW

(Show a minimum of three reference ties to durable physical objects, relevant monuments and physical conditions that will enable recovery of the corner.)



- △ Conc. Mon.
- Iron Pin
- Set Iron Pin

List Corners to be Indexed

Corners	Section	Twp	Range
W. 1/4 Cor.	31	79N	5E

UNITED STATES PUBLIC LAND SURVEY CORNER CERTIFICATE

OF

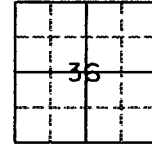
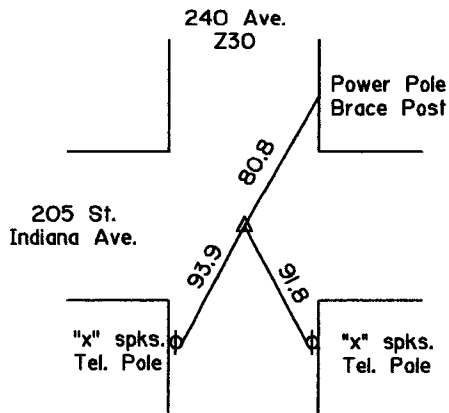
Land Survey Monuments situated in Section 36, Township T-79N, Range R-4E, of the Fifth Principal Meridian, SCOTT County, Iowa.
Previously recorded in _____ in County Recorder's Office.
(book, page, document number, etc.)

(Show reason for preparing this certificate, the evidence and detailed procedures used in establishing the corner positions and monumentation found or placed.)

Monument Description and Remarks: SCOTT COUNTY TIE BOOKS

PLAN - VIEW

(Show a minimum of three reference ties to durable physical objects, relevant monuments and physical conditions that will enable recovery of the corner.)



See Section 31 for more Information

- △ Conc. Mon.
- Iron Pin
- Set Iron Pin

List Corners to be Indexed

Corners	Section	Twp	Range
SE. Cor.	36	79N	4E