

00550-98

98 JAN -8 AM 9:46

FEE

#600
Richard D. Hofer
RECORDER OF DEEDS
SCOTT COUNTY, IOWA

UNITED STATES PUBLIC LAND SURVEY CORNER CERTIFICATE
OF

Land Survey Monuments situated in Section 33, Township 79N., Range 3E.,
of the Fifth Principal Meridian, SCOTT County, Iowa,
Previously recorded in _____ in County Recorder's Office.

(book, page, document numbers, etc.)

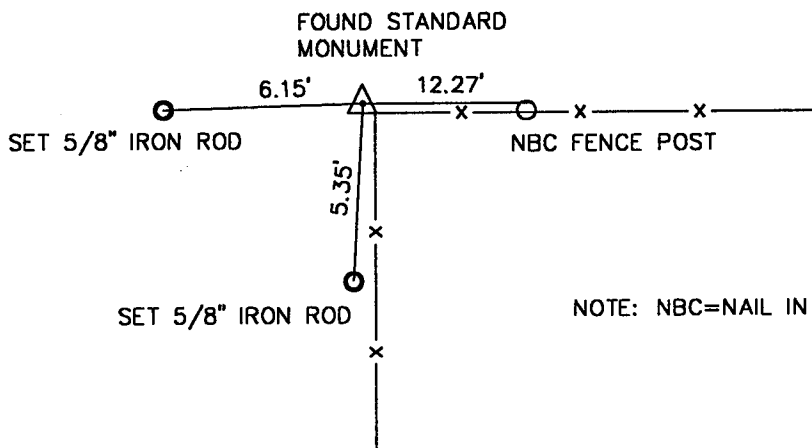
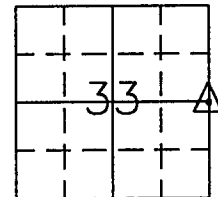
(Show reason for preparing this certificate, the evidence and detailed procedures used in establishing
the corner positions and monuments found or placed.)

Monument Description and Remarks: SEE DESCRIPTION BELOW

FOUND STANDARD CONCRETE MONUMENT

PLAN VIEW

(Show a minimum of three reference ties to durable physical objects, relevant monuments
and physical conditions that will enable recovery of the corner.)



NOTE: NBC=NAIL IN BOTTLE CAP

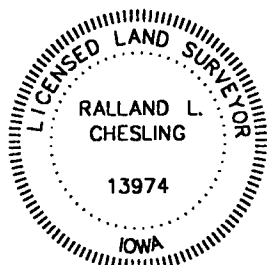


I hereby certify that the survey work was completed and this certificate
was prepared by me or under my direct personal supervision and that
I am a duly registered land surveyor under the laws of the state of
Iowa.

Signature: Ralland L. Chesling
Ralland L. Chesling

Date: January 7, 1998 Reg. No. 13974.

SEAL



List Corners to be Indexed
Corners Section Twp. Range
E 1/4 33 79N. 3E.