

UNITED STATES PUBLIC LAND SURVEY CORNER CERTIFICATE

OF

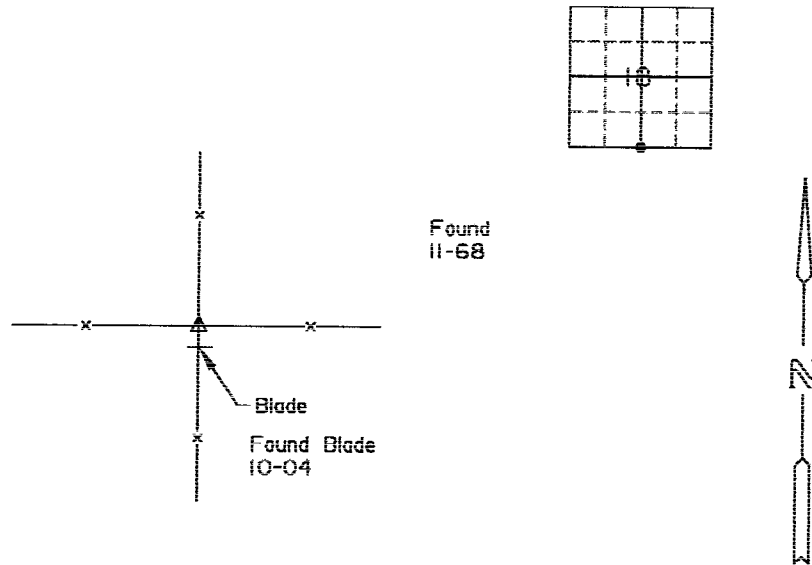
Land Survey Monuments situated in Section 18, Township T-79N, Range R-3E, of the Fifth Principal Meridian, SCOTT County, Iowa.
 Previously recorded in _____ in County Recorder's Office.
(book, page, document number, etc.)

(Show reason for preparing this certificate, the evidence and detailed procedures used in establishing the corner positions and monumentation found or placed.)

Monument Description and Remarks: SCOTT COUNTY TIE BOOKS

PLAN - VIEW

(Show a minimum of three reference ties to durable physical objects, relevant monuments and physical conditions that will enable recovery of the corner.)



Found
11-68

Blade
Found Blade
10-04

- △ Conc. Mon.
- Iron Pin
- Set Iron Pin

List Corners to be Indexed			
Corners	Section	Twp	Range
S. 1/4 Cor.	18	79N	3E

UNITED STATES PUBLIC LAND SURVEY CORNER CERTIFICATE OF

Land Survey Monuments situated in Section 18, Township 79 NORTH, Range 3 EAST, of the Fifth Principal Meridian, SCOTT County, Iowa.

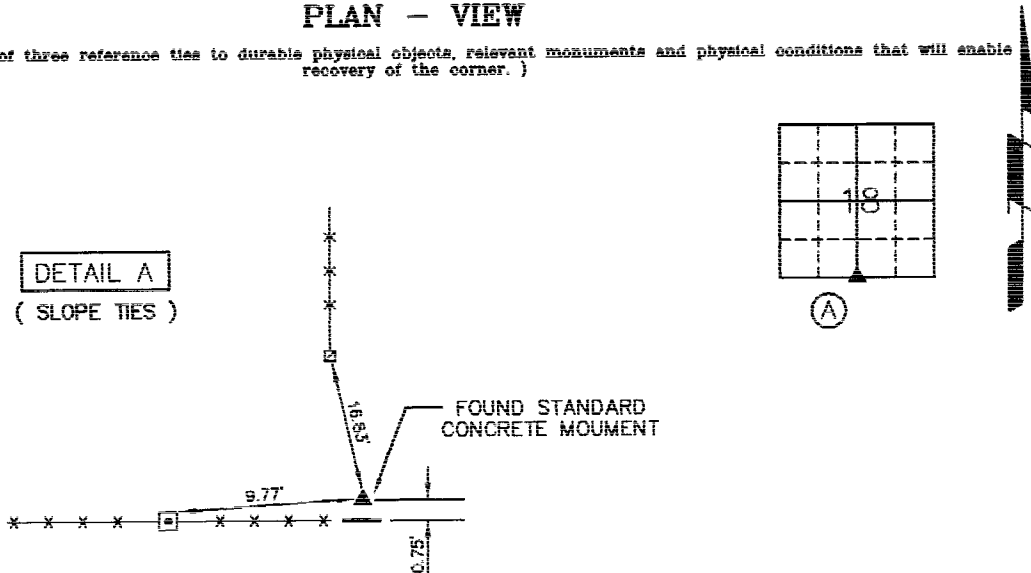
Previously recorded in (not previously recorded) in County Recorder's Office.
(book, page, document number, etc.)

(Show reason for preparing this certificate, the evidence and detailed procedures used in establishing the corner positions and monumentation found or placed.)

Monument Description and Remarks: FOUND STANDARD CONCRETE MONUMENT AT SOUTH QUARTER CORNER

PLAN - VIEW

(Show a minimum of three reference ties to durable physical objects, relevant monuments and physical conditions that will enable recovery of the corner.)



LEGEND

- GRADER BLADE
- ⊠ NAIL W/ PLASTIC TAG ON TOP OF GATE POST
- ⊡ NAIL W/ PLASTIC TAG ON TOP OF BRACE POST

I hereby certify that this land surveying document was prepared and the related survey work was performed by me or under my direct personal supervision and that I am a duly licensed Land Surveyor under the laws of the State of Iowa.

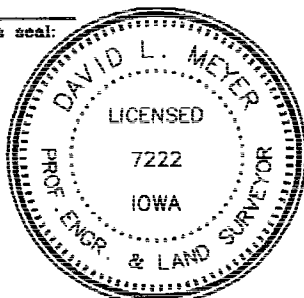
Signature: David L. Meyer, P.E. & L.S., License Number 7222

Date: MAY 17, 2004

My license renewal date is December 31, 2004

THIS SHEET ONLY

Pages or sheets covered by this seal:



LIST CORNERS TO BE INDEXED

CORNERS	SECTION	TOWNSHIP	RANGE
S. 1/4 Cor.	18	79N	3E

VMCE 04198