

UNITED STATES PUBLIC LAND SURVEY CORNER CERTIFICATE OF

Land Survey Monuments situated in Section 12, Township 79 NORTH, Range 3 EAST, of the Fifth Principle Meridian, SCOTT County, Iowa.
 Previously recorded in N/A in County Recorder's Office.
 (book, page, document number, etc.)

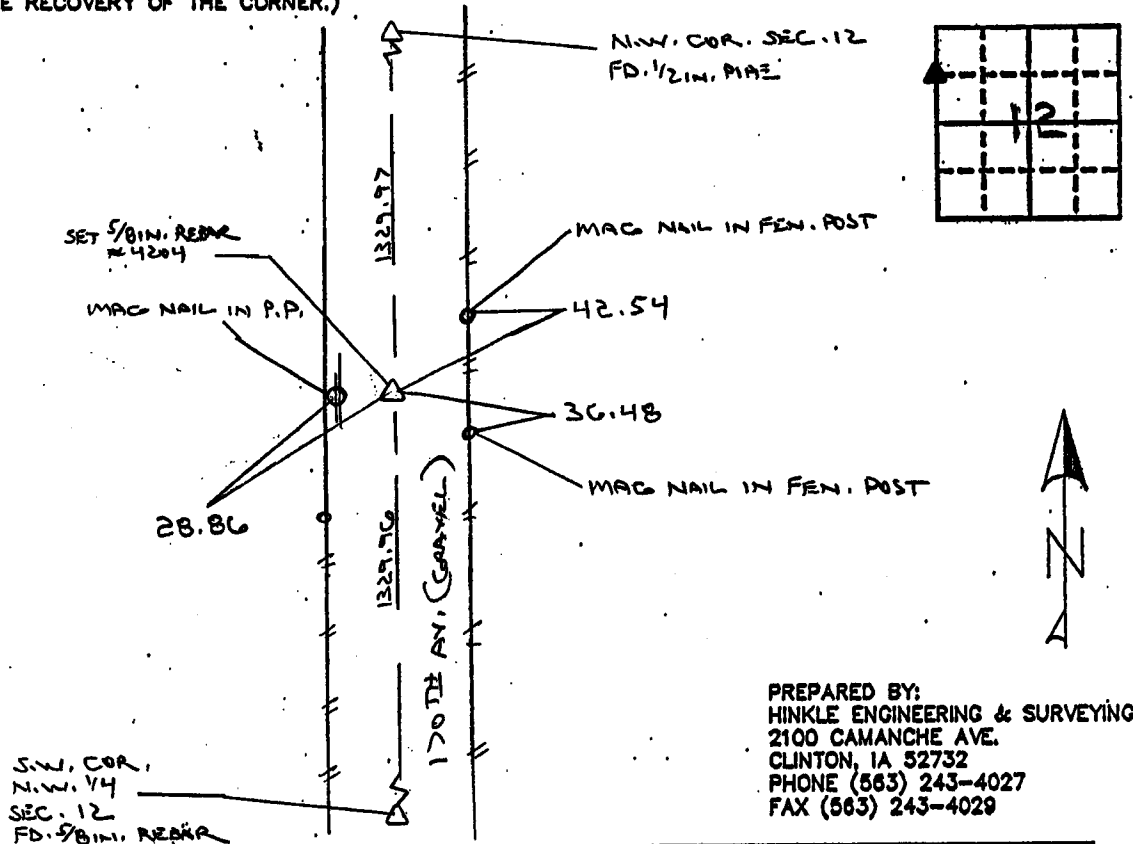
(Show reason for preparing this certificate, the evidence and detailed procedures used in establishing the corner positions and monumentation found or placed.)

Monument Description and Remarks: Set 5/8 In. Rebar #4204 on line and half the distance between N.W. Cor. S.W. Cor. N.W. 1/4 Sec 12

Bell Farm Survey
Job # 05-0075

PLAN-VIEW

(Show A MINIMUM OF THREE REFERENCE TIES TO DURABLE PHYSICAL OBJECTS, RELEVANT MONUMENTS AND PHYSICAL CONDITIONS WILL ENABLE RECOVERY OF THE CORNER.)



PREPARED BY:
 HINKLE ENGINEERING & SURVEYING
 2100 CAMANCHE AVE.
 CLINTON, IA 52732
 PHONE (563) 243-4027
 FAX (563) 243-4029

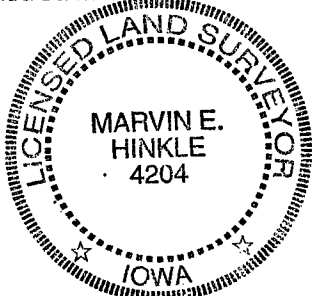
I hereby certify that the survey work was completed and this land surveying document was prepared by me or under my direct personal supervision and that I am a duly registered land surveyor under the laws of the state of Iowa

Signature: Marvin E. Hinkle
Name typed or printed:

Date: 11/29/05 Reg. No. 4204

My registration renewal date is December 31, 2005

SEAL



List Corners to be Indexed			
Corners	Section	Twp	Range
N.W. COR.	12	79N	3E
S. W.	1/4		
N. W.	1/4		