

UNITED STATES PUBLIC LAND SURVEY CORNER CERTIFICATE OF

LAND SURVEY MONUMENTS SITUATED IN SECTION 33, TOWNSHIP 79, RANGE 2E, OF THE 5TH PRINCIPAL MERIDIAN SCOTT COUNTY IOWA.

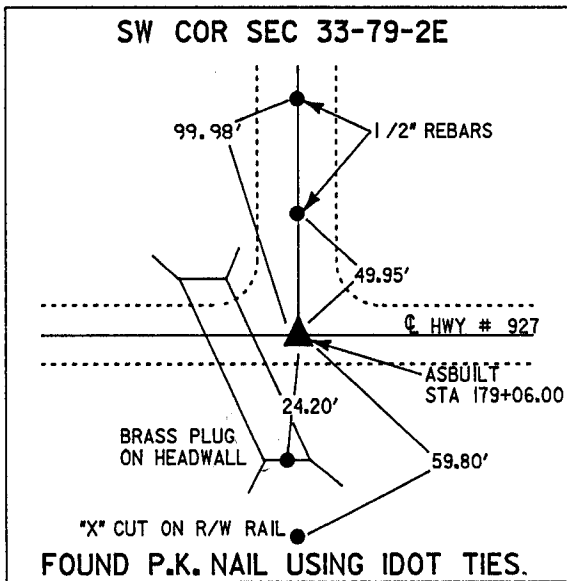
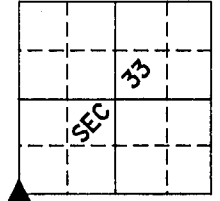
PREVIOUSLY RECORDED IN DOES NOT APPLY IN COUNTY RECORDER'S OFFICE.
(book, page, document number, etc.)

(Show reason for preparing this certificate, the evidence and detailed procedures used in establishing the corner positions and monumentation found or placed.)

MONUMENT DESCRIPTION AND REMARKS: REFERENCED CORNERS FOR R.O.W. ACQUISITIONS

PLAN - VIEW

(Show a minimum of three reference ties to durable physical objects, relevant monuments and physical conditions that will enable recovery of the corner.)



I hereby certify that the survey work was completed and this certificate was prepared by me or under my direct personal supervision and that I am a duly registered land surveyor under the laws of the state of Iowa.

Signature: *Dennis R. Kunze*
DENNIS R. KUNZE

Date: 6-21-91 Reg. No. 10679

LAND CORNERS TO BE RECORDED

Corners	Section	Twp.	Range
SW	33	T-79-N	R-2-E

