

David L. Meyer - 4111 East 80th Street, Davenport, Iowa 52807 ( 563 ) 359-1348

UNITED STATES PUBLIC LAND SURVEY CORNER CERTIFICATE OF

Land Survey Monuments situated in Section 30, Township 79 NORTH, Range 2 EAST, of the Fifth Principal Meridian, SCOTT County, Iowa.

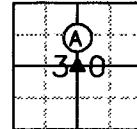
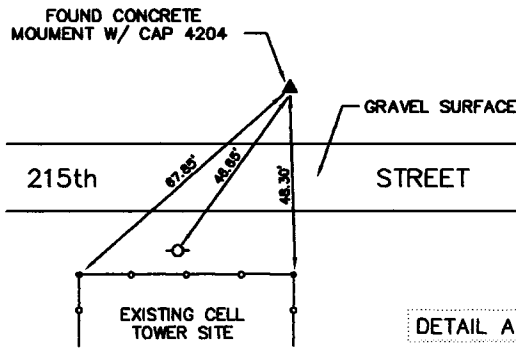
Previously recorded in ( not previously recorded ) in County Recorder's Office.  
( book, page, document number, etc. )

( Base reason for preparing this certificate, the evidence and detailed procedures used in establishing the corner positions and monumentation found or placed. )

**Monument Description and Remarks:** Found concrete monument with plastic cap 4204

PLAN - VIEW

( Show a minimum of three reference lines to describe physical objects, relevant monuments and physical conditions that will enable recovery of the corner )



DETAIL A  
( PLUMB TIES )

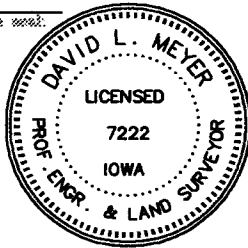
LEGEND

- NAIL W/ PLASTIC TAG IN POWER POLE
- CENTER METAL CHAINLINK FENCE POST
- CHAINLINK FENCE

I hereby certify that this land surveying document was prepared and the related survey work was performed by me or under my direct personal supervision and that I am a duly licensed land surveyor under the laws of the State of Iowa.

Signature: David L. Meyer, P.E. & L.S., License Number 7222  
 Date: NOVEMBER 12, 2002  
 My license renewal date is December 31, 2003

**THIS SHEET ONLY**  
 Pages or sheets covered by this seal.



LIST CORNERS TO BE INDEXED			
CORNERS	SECTION	TOWNSHIP	RANGE
CENTER	30	79N	2E

VMCE 02234-3