

UNITED STATES PUBLIC LAND SURVEY CORNER CERTIFICATE

OF

nd Survey Monuments situated in Section 33, Township 80N, Range 2E, of the Fifth Principal Meridian, Scott County, Iowa.
Previously recorded in Does Not Apply in County Recorder's Office.

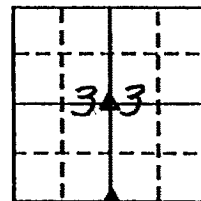
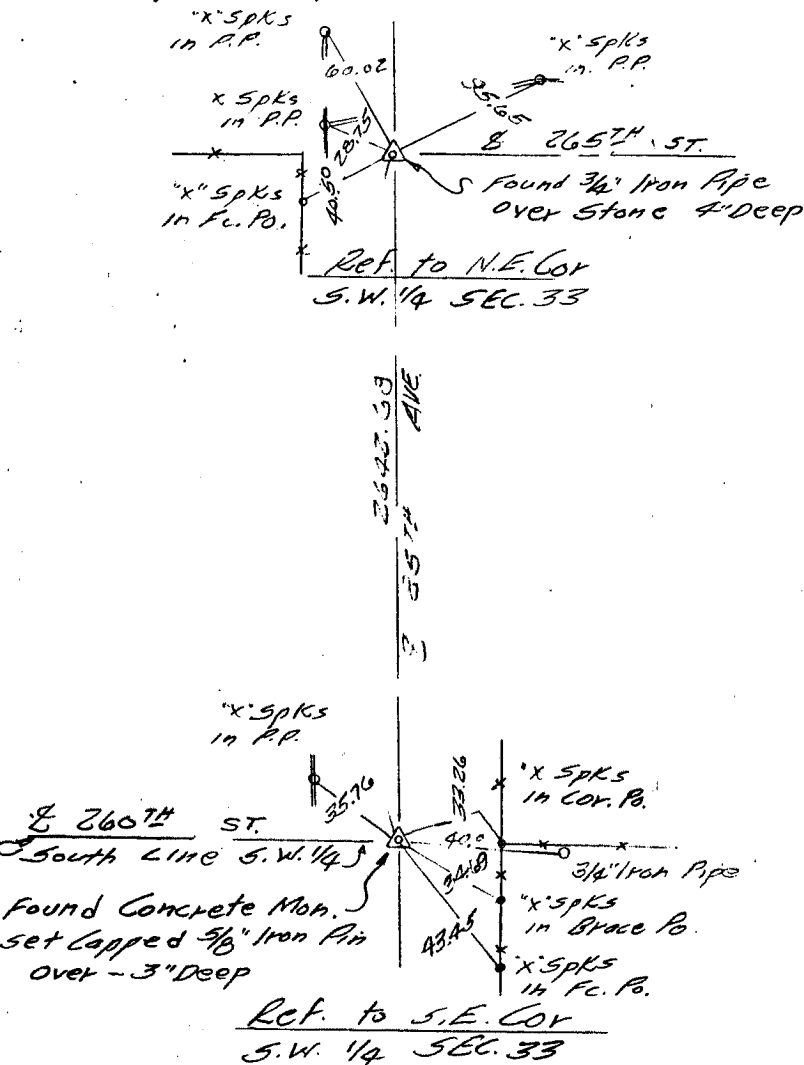
(book, page, document number, etc.)

(Show reason for preparing this certificate, the evidence and detailed procedures used in establishing the corner positions and monumentation found or placed.)

Monument Description and Remarks: Corner stone information obtained from Scott County Engineers Office. Located monuments and reference information is below.

PLAN - VIEW

(Show a minimum of three reference ties to durable physical objects, relevant monuments and physical conditions that will enable recovery of the corner.)



I hereby certify that the survey work was completed and this certificate was prepared by me or under my direct personal supervision and that I am a duly registered land surveyor under the laws of the state of Iowa.

Signature: *Mary E. Ambe*
Name typed or printed:

Date: March 8, 1991 Reg. No. 4204

Corners	List Corners to be Indexed		
	Section	Twp	Range
N.E. Cor.	33	80N	3E
S.W. $\frac{1}{4}$			
S.E. Cor.	33	80N	3E
S.W. $\frac{1}{4}$			

EAL

UNITED STATES PUBLIC LAND SURVEY CORNER CERTIFICATE

OF

Land Survey Monuments situated in Section 4, Township T-79N, Range R-2E, of the Fifth Principal Meridian, SCOTT County, Iowa. Previously recorded in _____ in County Recorder's Office.

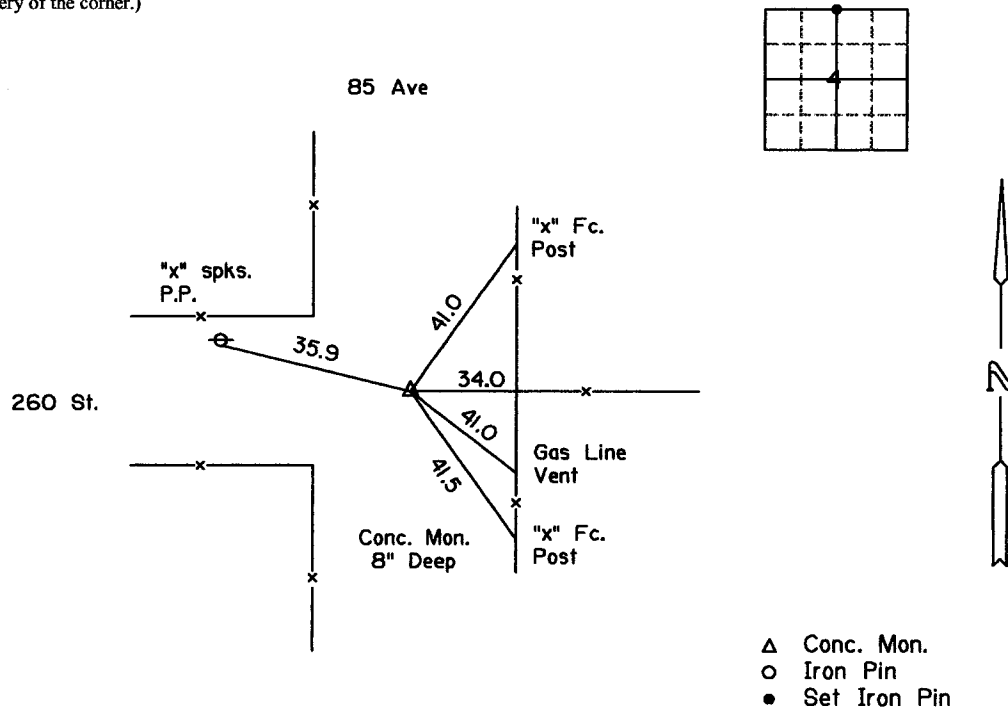
(book, page, document number, etc.)

(Show reason for preparing this certificate, the evidence and detailed procedures used in establishing the corner positions and monumentation found or placed.)

Monument Description and Remarks: SCOTT COUNTY TIE BOOKS

PLAN - VIEW

(Show a minimum of three reference ties to durable physical objects, relevant monuments and physical conditions that will enable recovery of the corner.)



List Corners to be Indexed

Corners	Section	Twp	Range
N. 1/4 Cor.	4	79N	2E