

UNITED STATES PUBLIC LAND SURVEY CORNER CERTIFICATE

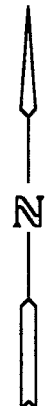
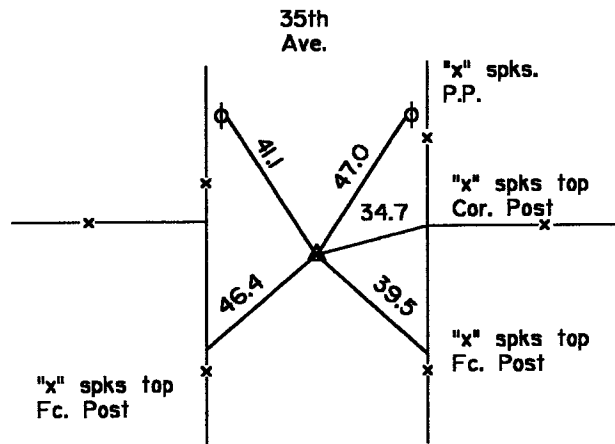
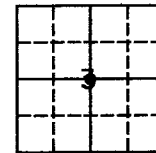
OF

Land Survey Monuments situated in Section 3, Township T-79N, Range R-1E, of the Fifth Principal Meridian, SCOTT County, Iowa.
 Previously recorded in _____ in County Recorder's Office.
(book, page, document number, etc.)

(Show reason for preparing this certificate, the evidence and detailed procedures used in establishing the corner positions and monumentation found or placed.)
 Monument Description and Remarks: SCOTT COUNTY TIE BOOKS

PLAN - VIEW

(Show a minimum of three reference ties to durable physical objects, relevant monuments and physical conditions that will enable recovery of the corner.)



Center Sec. 3
 Old stone replaced
 with Conc. Mont.
 April 1964

- △ Conc. Mon.
- Iron Pin
- Set Iron Pin

	List Corners to be Indexed		
Corners	Section	Twp	Range
Center	3	79N	1E