

UNITED STATES PUBLIC LAND SURVEY CORNER CERTIFICATE

OF

Land Survey Monuments situated in Section 3, Township 78N, Range 5E, of the Fifth Principal Meridian, Scott County, Iowa. Previously recorded in _____ in County Recorder's Office.

(book, page, document number, etc.)

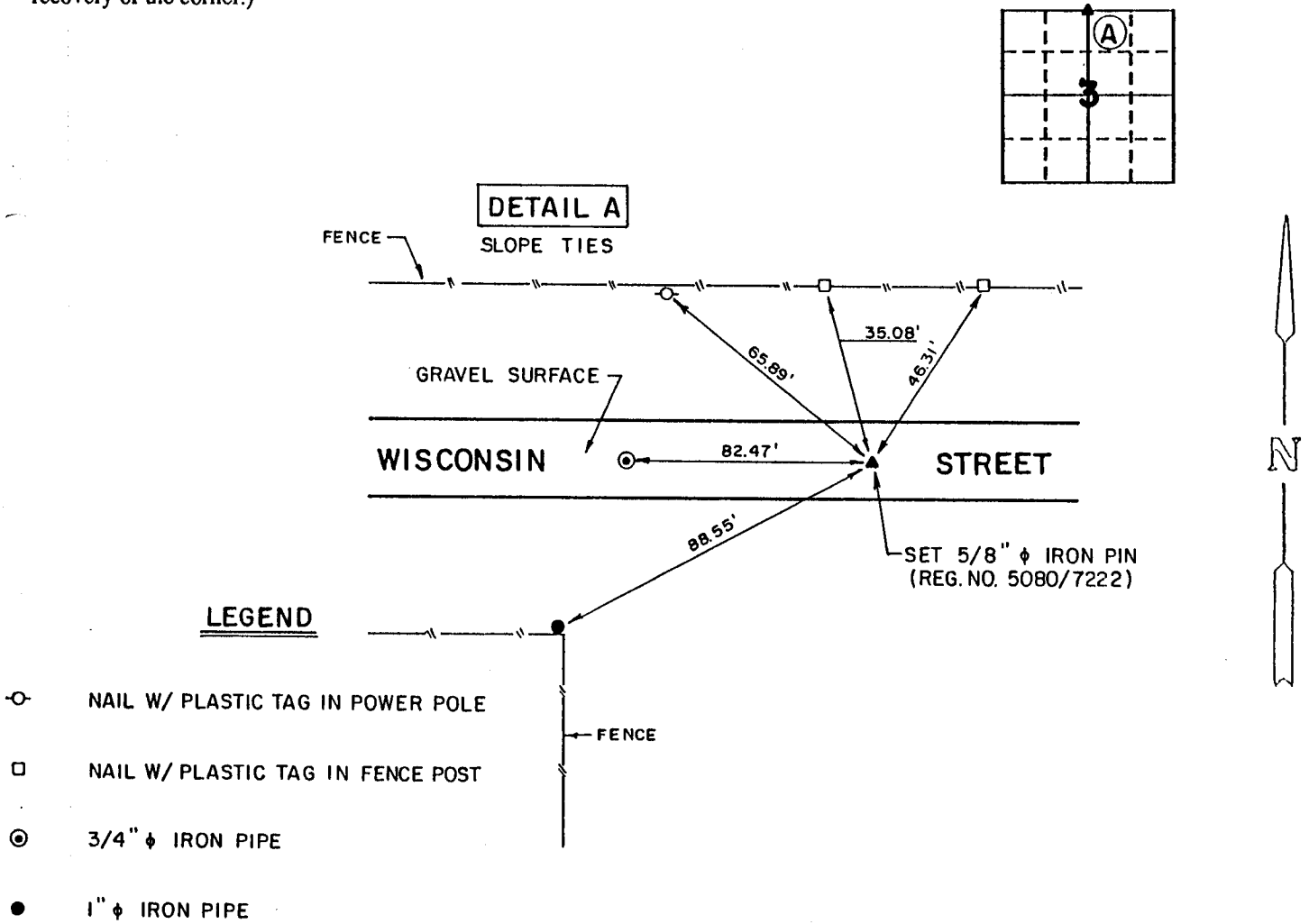
(Show reason for preparing this certificate, the evidence and detailed procedures used in establishing the corner positions and monumentation found or placed.)

Monument Description and Remarks: See descriptions below

Set pin at section corner location using found monumentation on various properties south of Wisconsin Street.

PLAN - VIEW

(Show a minimum of three reference ties to durable physical objects, relevant monuments and physical conditions that will enable recovery of the corner.)



I hereby certify that the survey work was completed and this certificate was prepared by me or under my direct personal supervision and that I am a duly registered land surveyor under the laws of the state of Iowa.

Signature: David L. Meyer
Name typed or printed: David L. Meyer

Date: Jan. 4, 1993 Reg. No. 7222

Corners	List Corners to be Indexed		
	Section	Twp	Range
N. $\frac{1}{4}$ Cor.	3	78N	5E

