

# UNITED STATES PUBLIC LAND SURVEY CORNER CERTIFICATE

OF

Land Survey Monuments situated in Section 33, Township 78N, Range 2E, of the Fifth Principal Meridian, SCOTT County, Iowa. Previously recorded in \_\_\_\_\_ in County Recorder's Office.

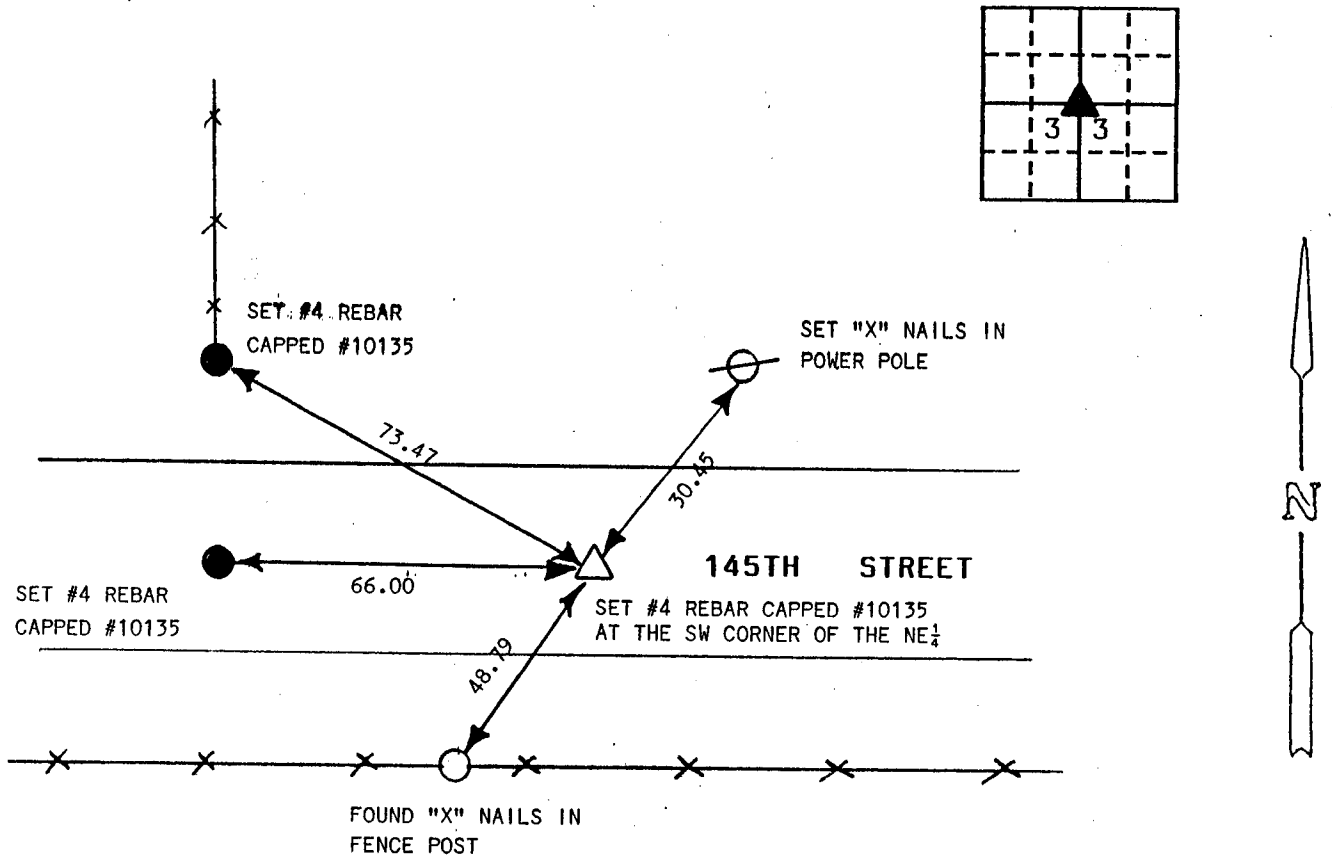
(book, page, document number, etc.)

(Show reason for preparing this certificate, the evidence and detailed procedures used in establishing the corner positions and monumentation found or placed.)

Monument Description and Remarks: SET #4 REBAR IN CENTER OF ROAD AT THE SW CORNER OF THE NE 1/4 OF SECTION 33-78-2E. MONUMENT WAS SET BY INTERSECTING THE 4 FOUND QUARTER CORNERS.

## PLAN - VIEW

(Show a minimum of three reference ties to durable physical objects, relevant monuments and physical conditions that will enable recovery of the corner.)



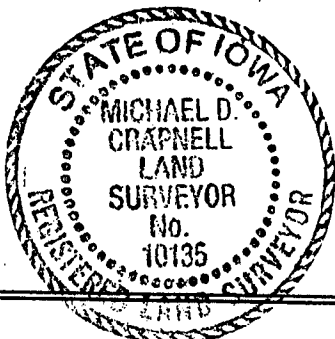
I hereby certify that the survey work was completed and this land surveying document was prepared by me or under my direct personal supervision and that I am a duly registered land surveyor under the laws of the state of Iowa

Signature: [Signature]  
Name typed or printed: MICHAEL D. CRAPNELL

Date: JUNE 20, 1995 Reg. No. 10135

My registration renewal date is December 31, 96

SEAL



Corners	List Corners to be Indexed		
	Section	Twp	Range
SW CORNER OF THE NE 1/4	33	78N	2E