

UNITED STATES PUBLIC LAND SURVEY CORNER CERTIFICATE

OF

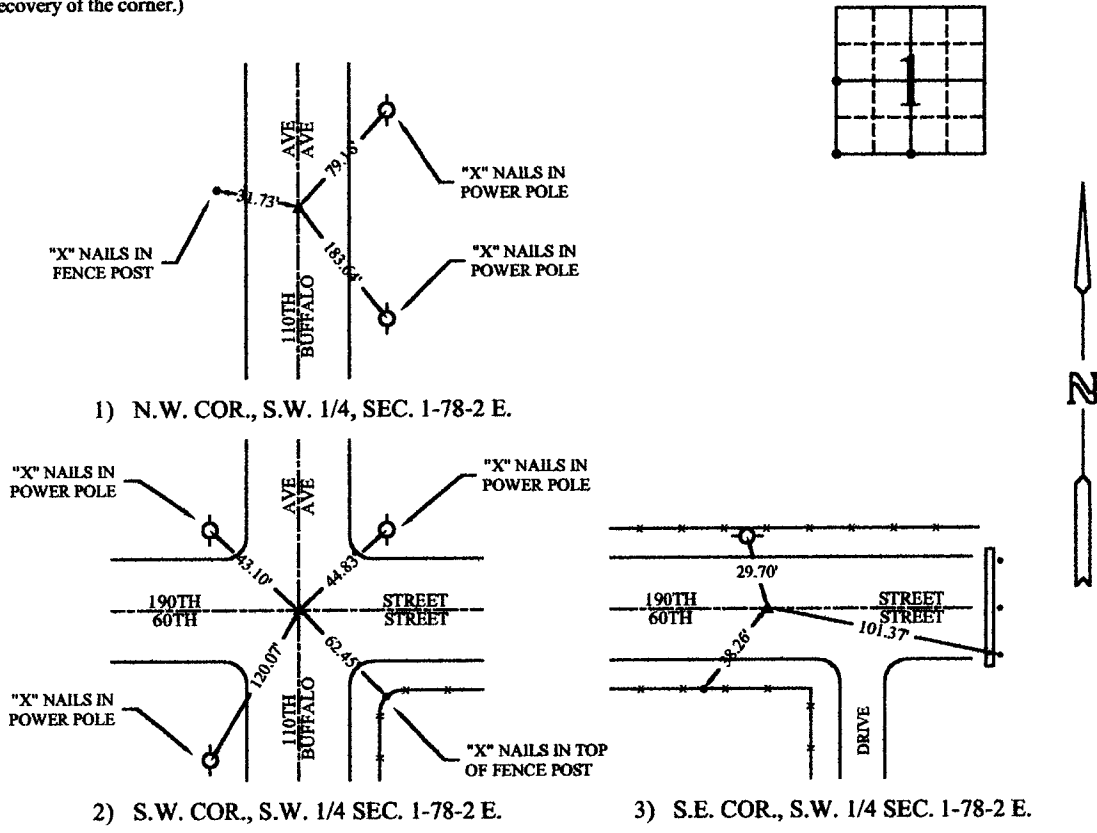
Land Survey Monuments situated in Section 1, Township 78, Range 2 E., of the Fifth Principal Meridian, SCOTT County, Iowa.
 Previously recorded in NOT PREVIOUSLY RECORDED in County Recorder's Office.
(book, page, document number, etc.)

(Show reason for preparing this certificate, the evidence and detailed procedures used in establishing the corner positions and monumentation found or placed.)

Monument Description and Remarks: 1) FOUND CONC. MONUMENT 30" DEEP, SET #4 REBAR 4" DEEP @ N.W. COR., S.W. 1/4 SEC. 1-78-2 E.
2) FOUND CONC. MONUMENT 40" DEEP, SET 1/2" SQ. 4" DEEP WITH CAP #10897 @ S.W. COR., S.W. 1/4 SEC. 1-78-2 E.
3) FOUND #4 REBAR 4" DEEP @ S.E. COR., S.W. 1/4 SEC. 1-78-2 E.

PLAN - VIEW

(Show a minimum of three reference ties to durable physical objects, relevant monuments and physical conditions that will enable recovery of the corner.)



I hereby certify that the survey work was completed and this land surveying document was prepared by me or under my direct personal supervision and that I am a duly licensed land surveyor under the laws of the state of Iowa.

Signature: _____
 Name typed or printed: Larry L. Lindemann - C&L LAND SURVEYING
 P.O. BOX 2666, DAVENPORT, IA 52809-2666
 Date: _____ License No. 10897

My license renewal date is December 31, 2003

SEAL



List Corners to be Indexed

Corners	Section	Twp	Range
N.W. COR., S.W. 1/4	1	79	2 E.
S.W. COR., S.W. 1/4	1	79	2 E.
S.E. COR., S.W. 1/4	1	79	2 E.