

UNITED STATES PUBLIC LAND SURVEY CORNER CERTIFICATE

OF

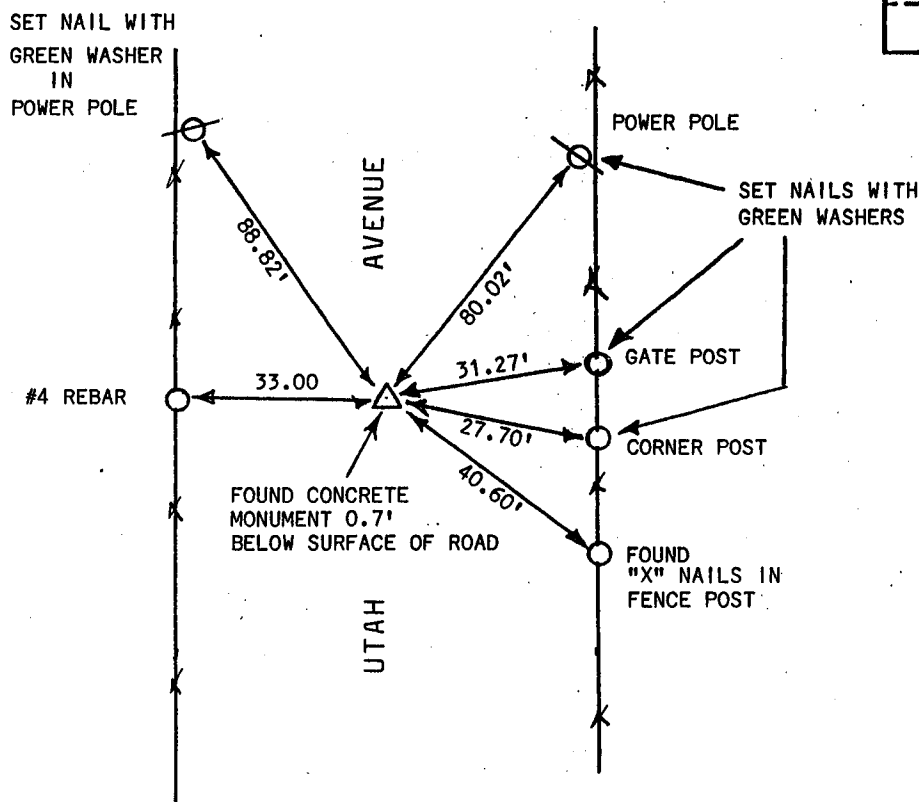
Land Survey Monuments situated in Section 1, Township 77, Range 2E, of the Fifth Principal Meridian, SCOTT County, Iowa.
Previously recorded in Book _____, Page _____.

(Show reason for preparing this certificate, the evidence and detailed procedures used in establishing the corner positions and monumentation found or placed.)

Monument Description and Remarks: FOUND CONCRETE MONUMENT AT THE SE CORNER
OF SECTION 1-77-2E 0.7' BELOW THE SURFACE OF ROAD BED.

PLAN - VIEW

(Show a minimum of three reference ties to durable physical objects, relevant monuments and physical conditions that will enable recovery of the corner.)

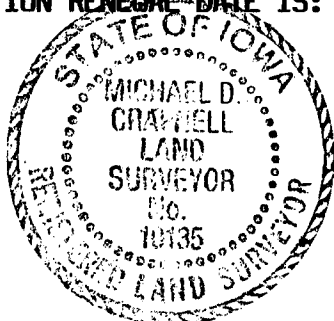


I hereby certify that the survey work was completed and this certificate was prepared by me or under my direct personal supervision and that I am a duly registered land surveyor under the laws of the state of Iowa.

MICHAEL D. CRAPNELL
REGISTERED LAND SURVEYOR NO. 10135

DATE: JUNE 15, 1995
MY REGISTRATION RENEWAL DATE IS: DEC. 31, 1996

SEAL



List Corners to be Indexed

Corners	Section	Twp	Range
SE CORNER	1	77	2E