

# UNITED STATES PUBLIC LAND SURVEY CORNER CERTIFICATE

OF

Land Survey Monuments situated in Section 9, Township 77 N, Range 2 E, of the Fifth Principal Meridian, SCOTT County, Iowa. Previously recorded in NA in County Recorder's Office.

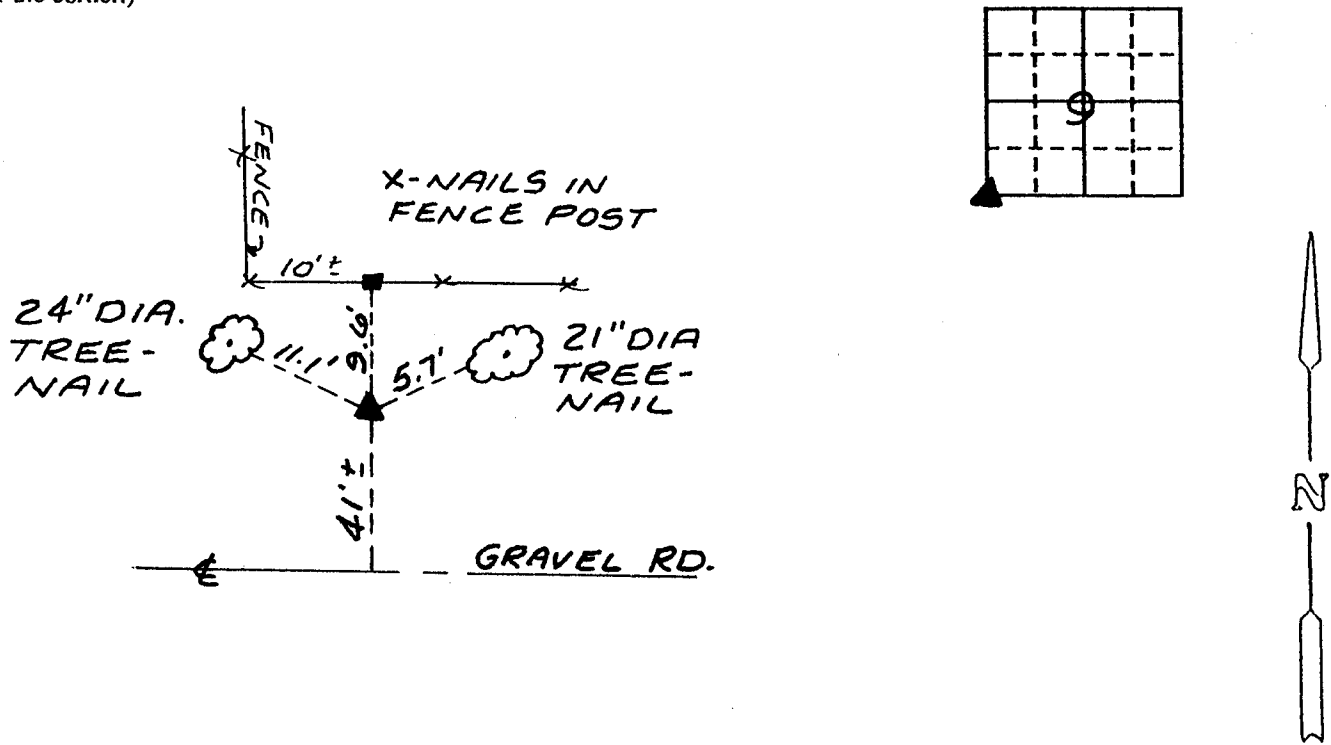
(book, page, document number, etc.)

Show reason for preparing this certificate, the evidence and detailed procedures used in establishing the corner positions and monumentation found or placed.)

Monument Description and Remarks: FOUND CONCRETE MONUMENT

### PLAN - VIEW

(Show a minimum of three reference ties to durable physical objects, relevant monuments and physical conditions that will enable recovery of the corner.)



I hereby certify that the survey work was completed and this certificate was prepared by me or under my direct personal supervision and that I am a duly registered land surveyor under the laws of the state of Iowa.

Signature: Jerry D. Rogers  
Name typed or printed:

Date: 6-26-95 Reg. No. 8860

Corners	List Corners to be Indexed		
	Section	Twp	Range
SW	9	77N	2E

SEAL

