

UNITED STATES PUBLIC LAND SURVEY CORNER CERTIFICATE

OF

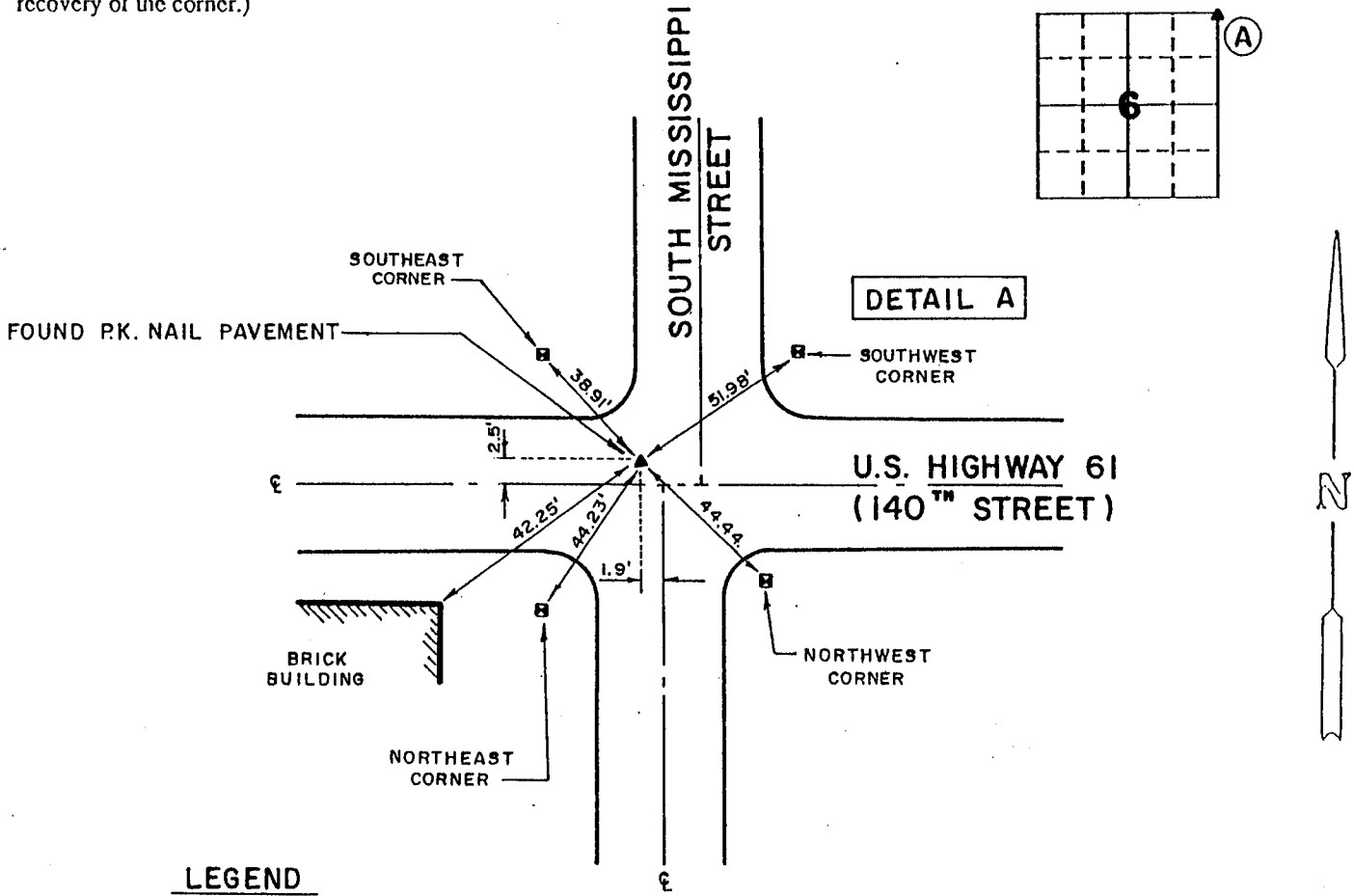
Land Survey Monuments situated in Section 6, Township 77 North, Range 2 East, of the Fifth Principal Meridian, Scott County, Iowa. Previously recorded in Document Number 23762-90 in County Recorder's Office.
(book, page, document number, etc.)

(Show reason for preparing this certificate, the evidence and detailed procedures used in establishing the corner positions and monumentation found or placed.)

Monument Description and Remarks: Section corner was shown in wrong quadrant of intersection on previously recorded certificate. This certificate is intended to replace the one dated December 18, 1990

PLAN - VIEW

(Show a minimum of three reference ties to durable physical objects, relevant monuments and physical conditions that will enable recovery of the corner.)



LEGEND

■ TRAFFIC SIGNAL METAL BASE

I hereby certify that the survey work was completed and this certificate was prepared by me or under my direct personal supervision and that I am a duly registered land surveyor under the laws of the state of Iowa.

Signature: David L. Meyer
Name typed or printed: David L. Meyer
Date: Oct. 18, 1992 Reg. No. 7222

Corners	List Corners to be Indexed		
	Section	Twp	Range
N.E. Cor.	6	77N	2E

SEAL

