

Township N<sup>o</sup> 77 N., Range N<sup>o</sup> 2 East of the 5<sup>th</sup> Mer.



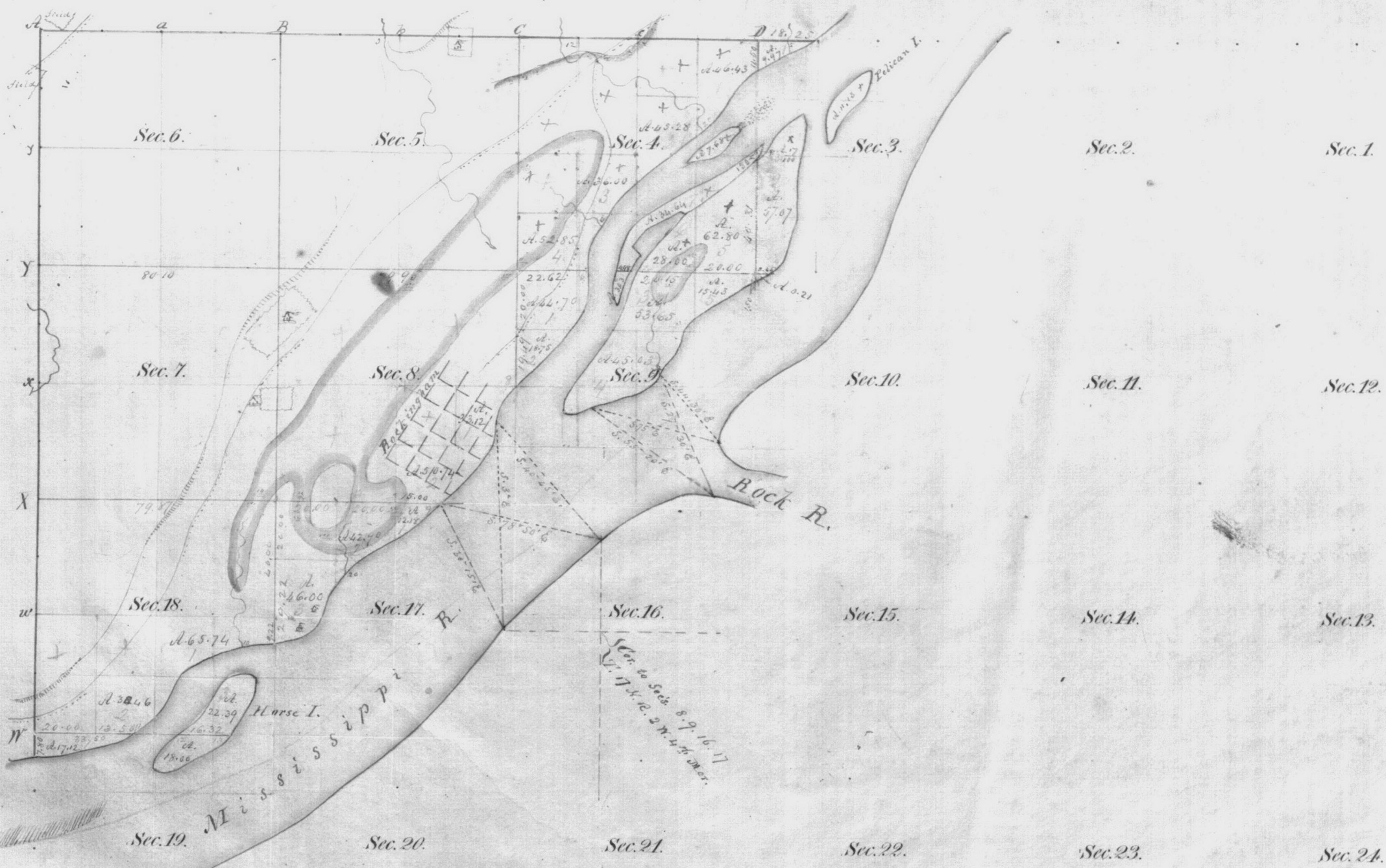
Surveyed in 1838 by *W.A. & A. Bart*, Deputy Surveyor.

Scale 40 Chains to an Inch.

I certify that the above is a true copy of the  
 Original plat in this Office.  
 Surveyor General's Office } *Warner Swain*  
 Dubuque April 1st 1836 } Sur. Genl.

1400541

Township N<sup>o</sup> 77 N., Range N<sup>o</sup> 3 East of the 5<sup>th</sup> Mer.



Surveyed in 1837 by Wm. A. & A. Burt, Deputy Surveyor.  
 Adjuted " 1846 " W. S. Tinsley & Joseph Mooreheads.

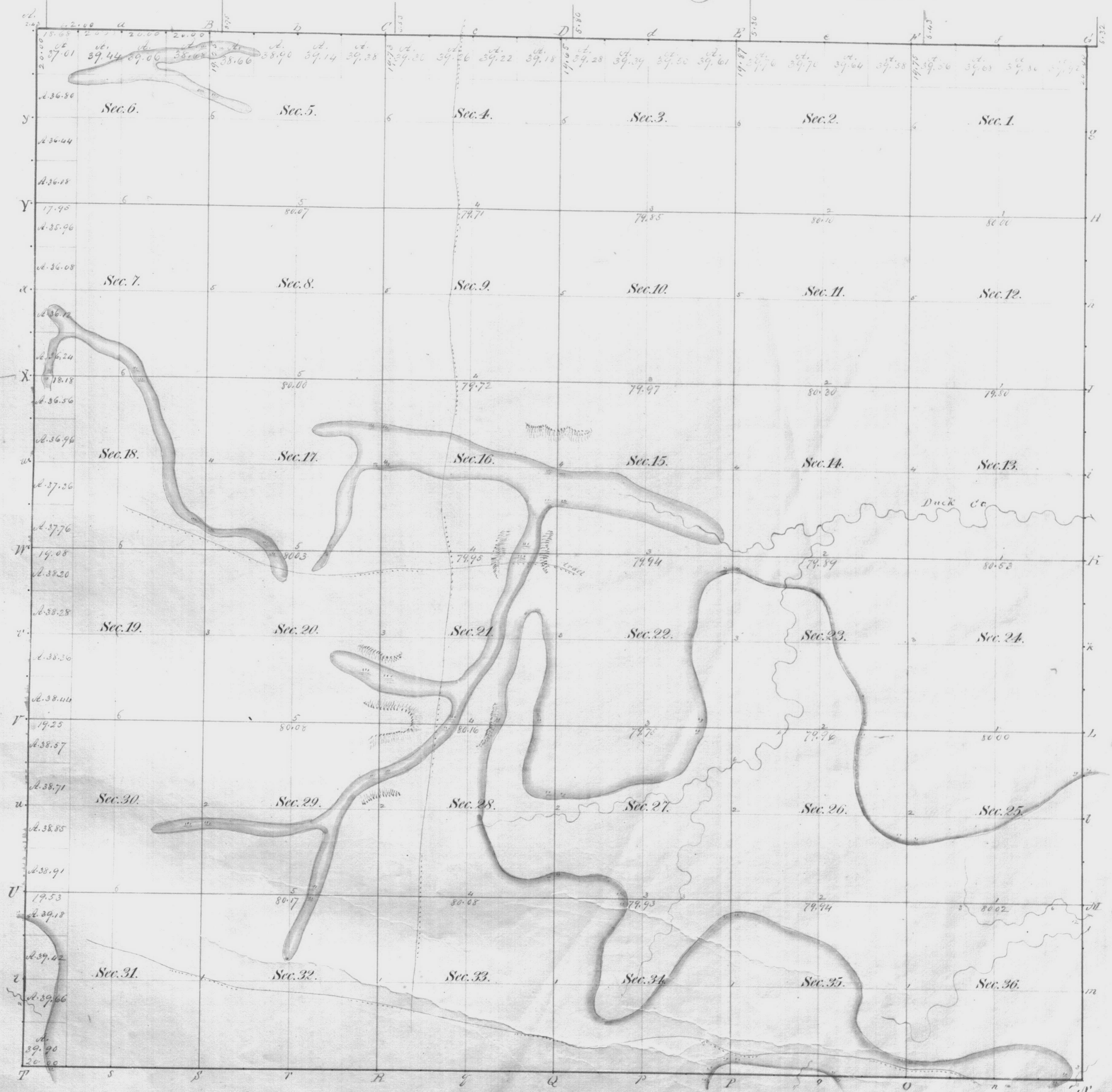
Scale 40 Chains to an Inch.

I certify that the above is a true copy of the  
 Original plat in this Office.

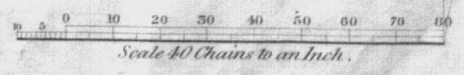
Surveyor General's Office  
 Dubuque, April 1st. 1856

Warner Swain  
 Sur. Genl.

Township N<sup>o</sup> 78 N., Range N<sup>o</sup> 2 East of the 5<sup>th</sup> Mer.



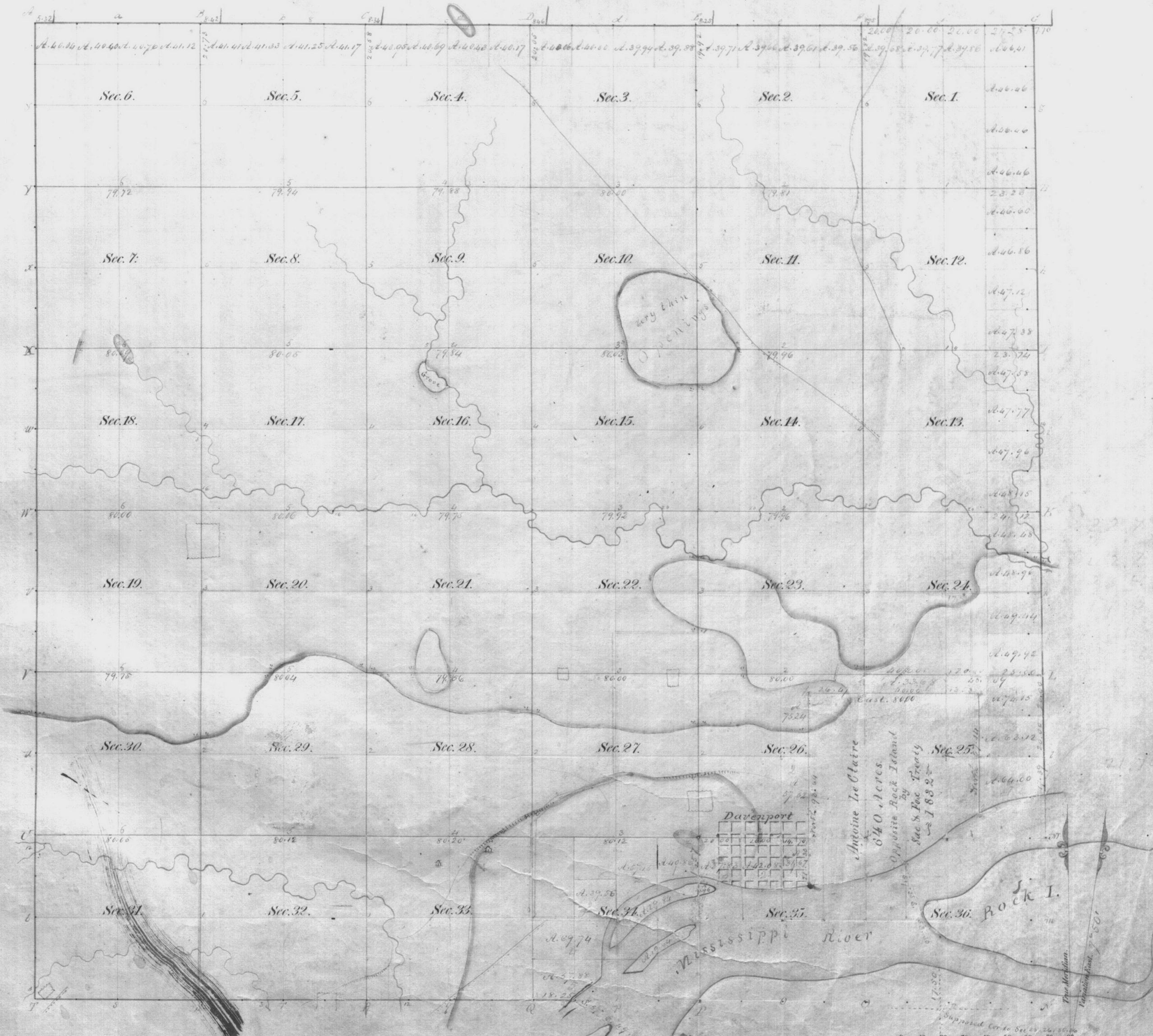
Surveyed in 1837 by W. & A. Burt Deputy Surveyor.



I certify that the above is a true copy of the  
 Original plat in this Office  
 Surveyor General's Office } Warner, Surveyor  
 Dubuque, April 1st 1856 } Sur. Genl

2297149

Township N<sup>o</sup> 78 N., Range N<sup>o</sup> 3 East of the 5<sup>th</sup> Mer.



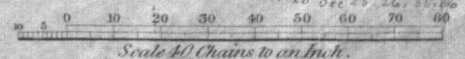
Surveyed in 1827 by M. A. & A. East, Deputy Surveyor.

Islands by J. E. Whitchee 1842

I certify that the above is a true copy of the Original plat in this Office.

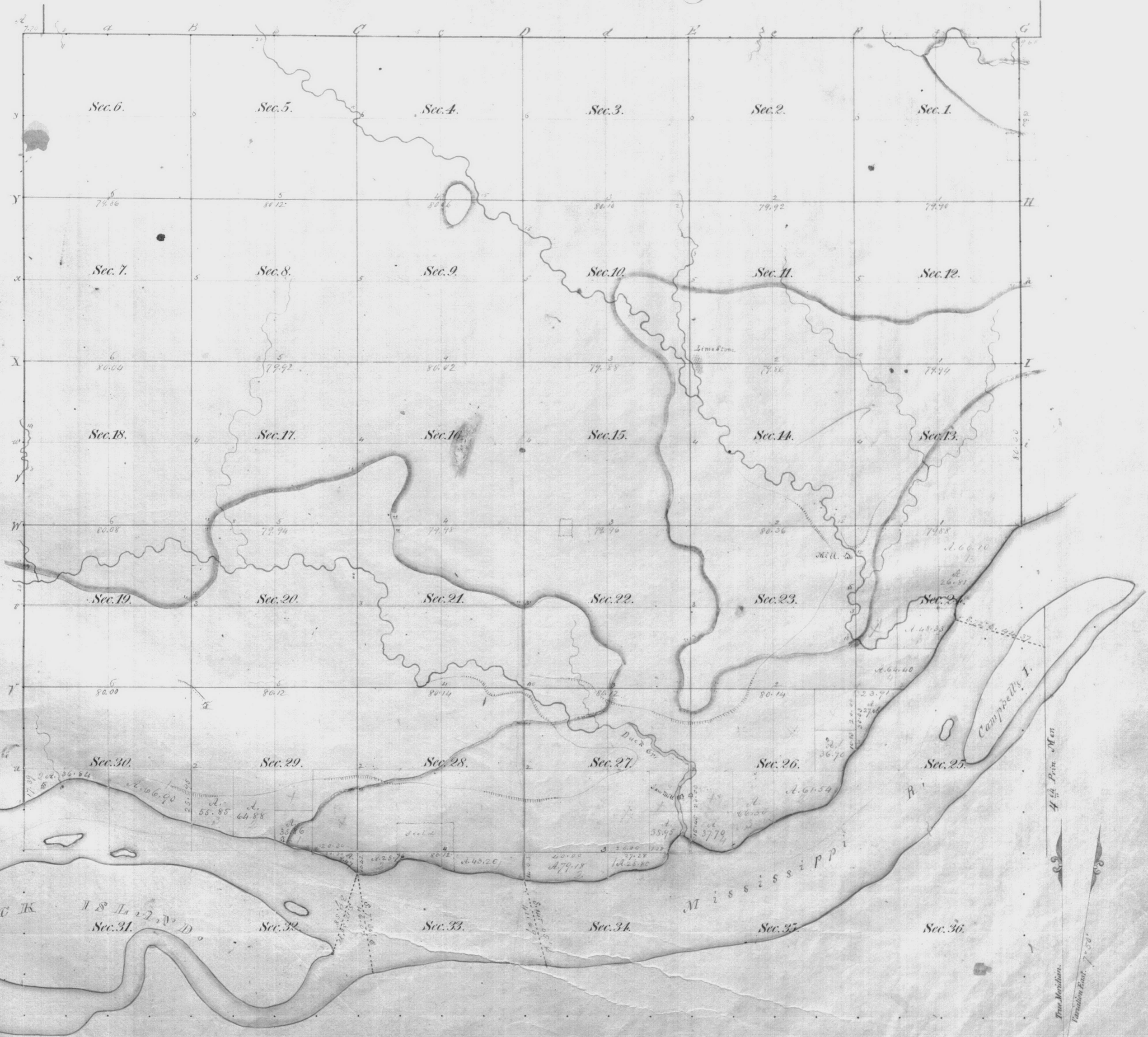
Surveyor General's Office

Cuba, April 15, 1842



Warren, Sec'y  
Sur. Genl

Township N<sup>o</sup> 78 N., Range N<sup>o</sup> 4 East of the 5<sup>th</sup> Mer.



Surveyed in 1838 by M. A. & A. Runt, Deputy Surveyor.

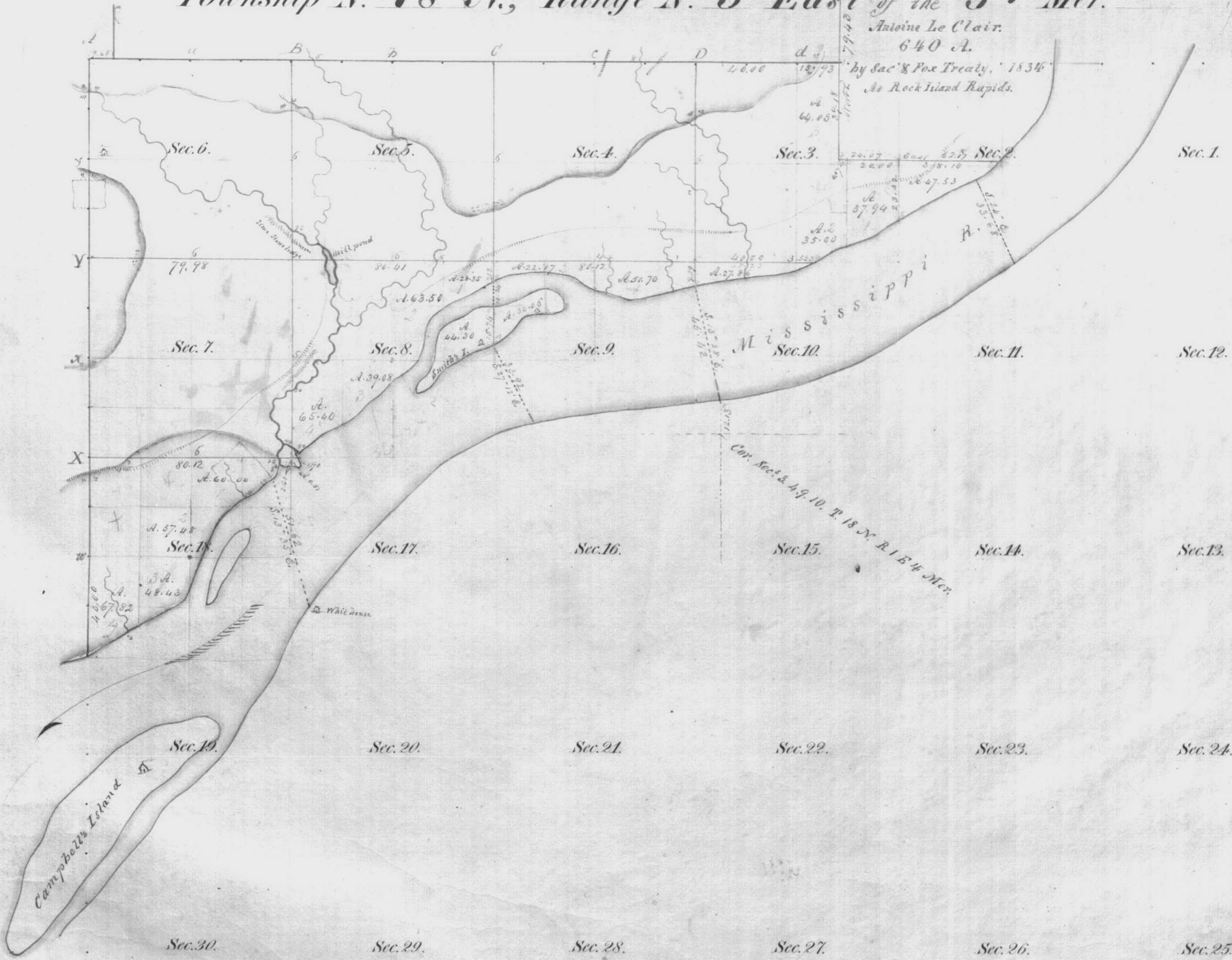
I certify that the above is a true copy of the  
 Original plat in this Office.  
 Surveyor General's Office  
 Dubuque, April 1st, 1856

*Warner Lewis*  
 Sur. Genl.

Township N<sup>o</sup> 78 N., Range N<sup>o</sup> 5 East of the 5<sup>th</sup> Mer.

Antoine Le Clair.  
640 A.

by Sac & Fox Treaty, 1834  
At Rock Island Rapids.



Surveyed in 1838 by *W. A. J. A. Burt*, Deputy Surveyor.

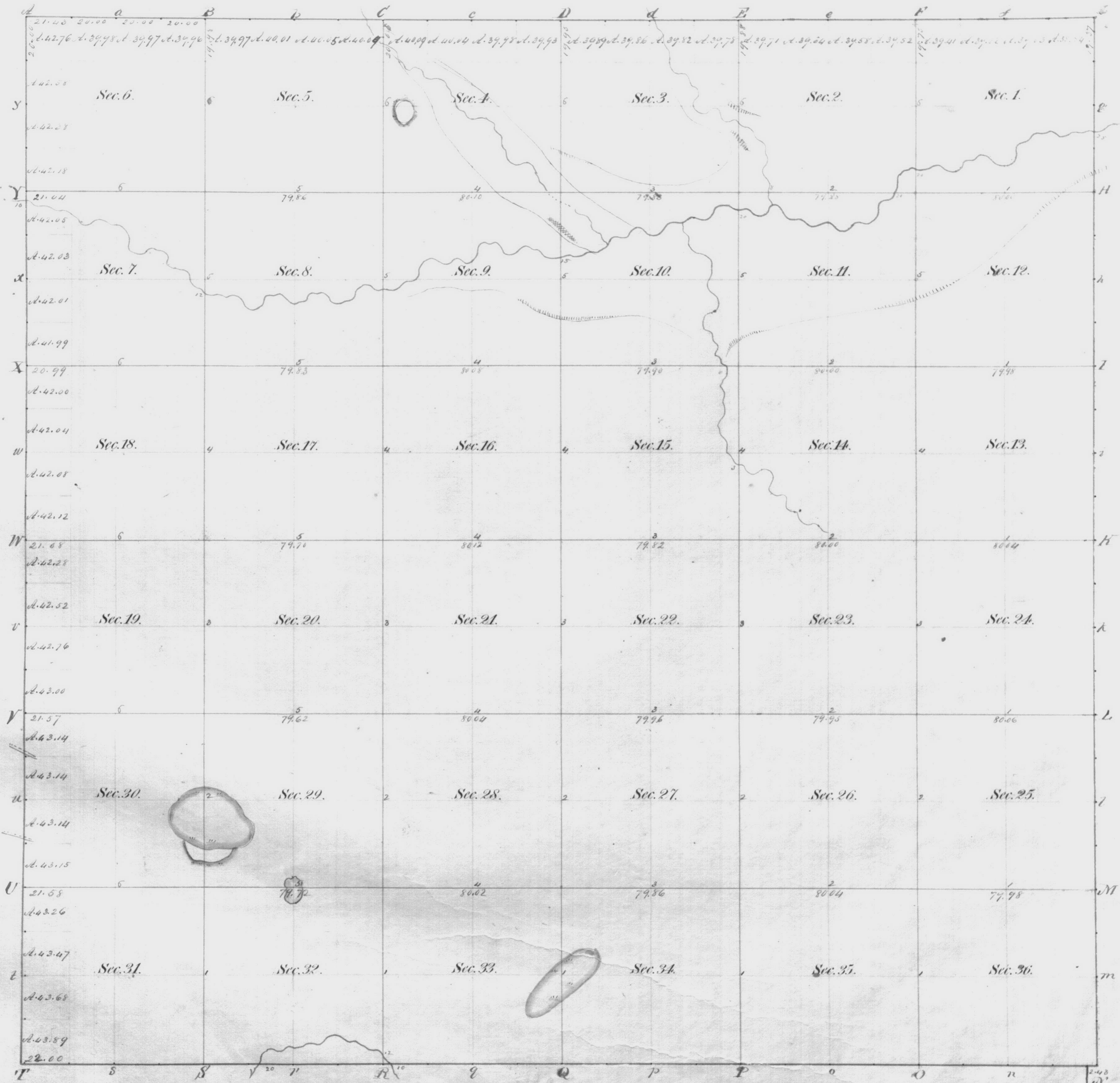
Scale 40 Chains to an Inch.

I certify that the above is a true copy of the  
Original plat in this Office.

Surveyor General's Office  
Dubuque, April 14<sup>th</sup> 1856

*Warner Lewis*  
Surv. Genl.

Township N<sup>o</sup> 79 N., Range N<sup>o</sup> 1 East of the 5<sup>th</sup> Mer.

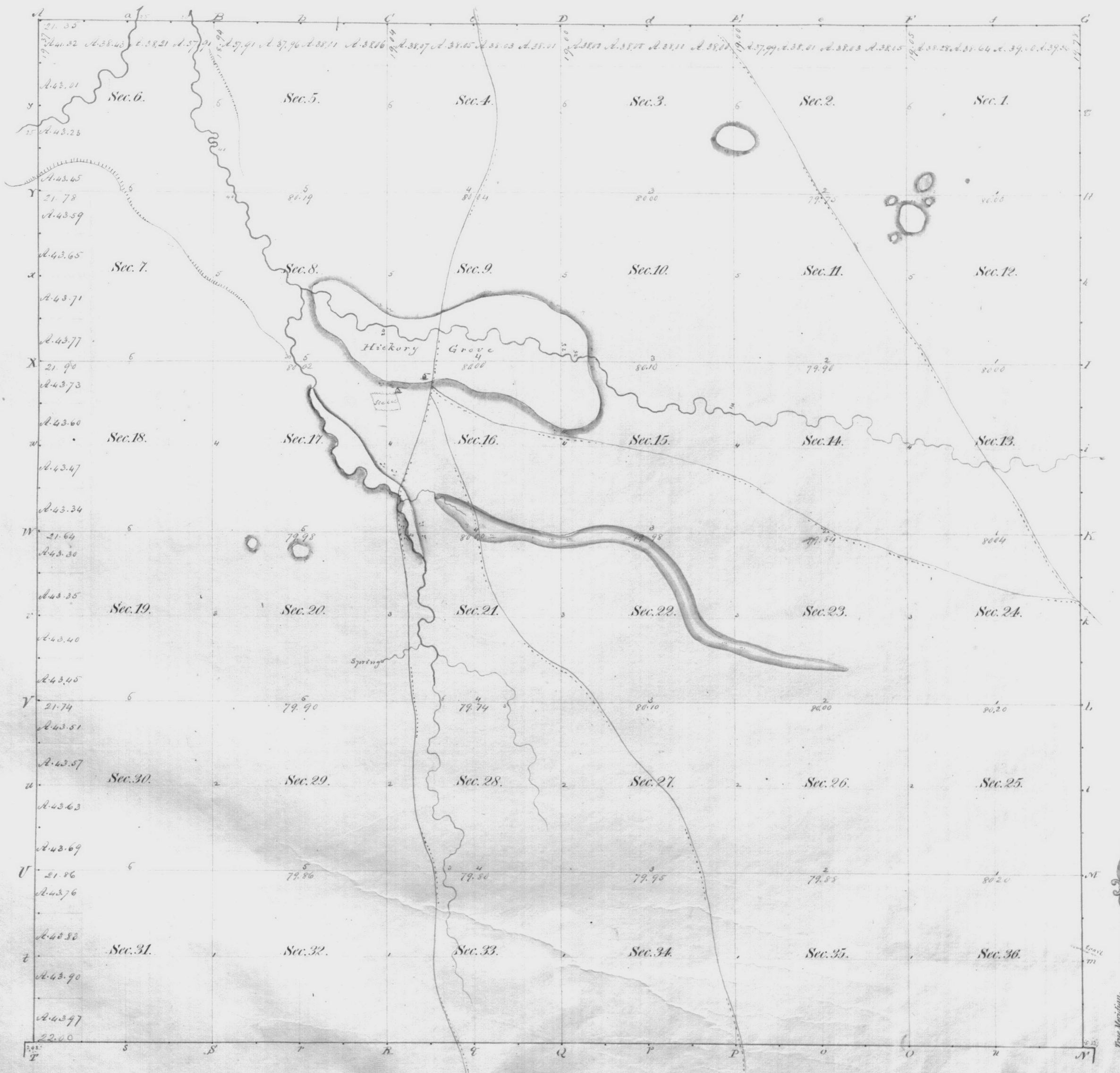


Surveyed in 1837 by H. A. & A. Burt Deputy Surveyor.

Scale 40 Chains to an Inch.

I certify that the above is a true copy of the  
 Original plat in this Office.  
 Surveyor General's Office  
 Dubuque, April 14<sup>th</sup> 1856  
 Warron Lewis  
 Sur. Genl.

Township N<sup>o</sup> 7 9 N., Range N<sup>o</sup> 2 East of the 5<sup>th</sup> Mer.

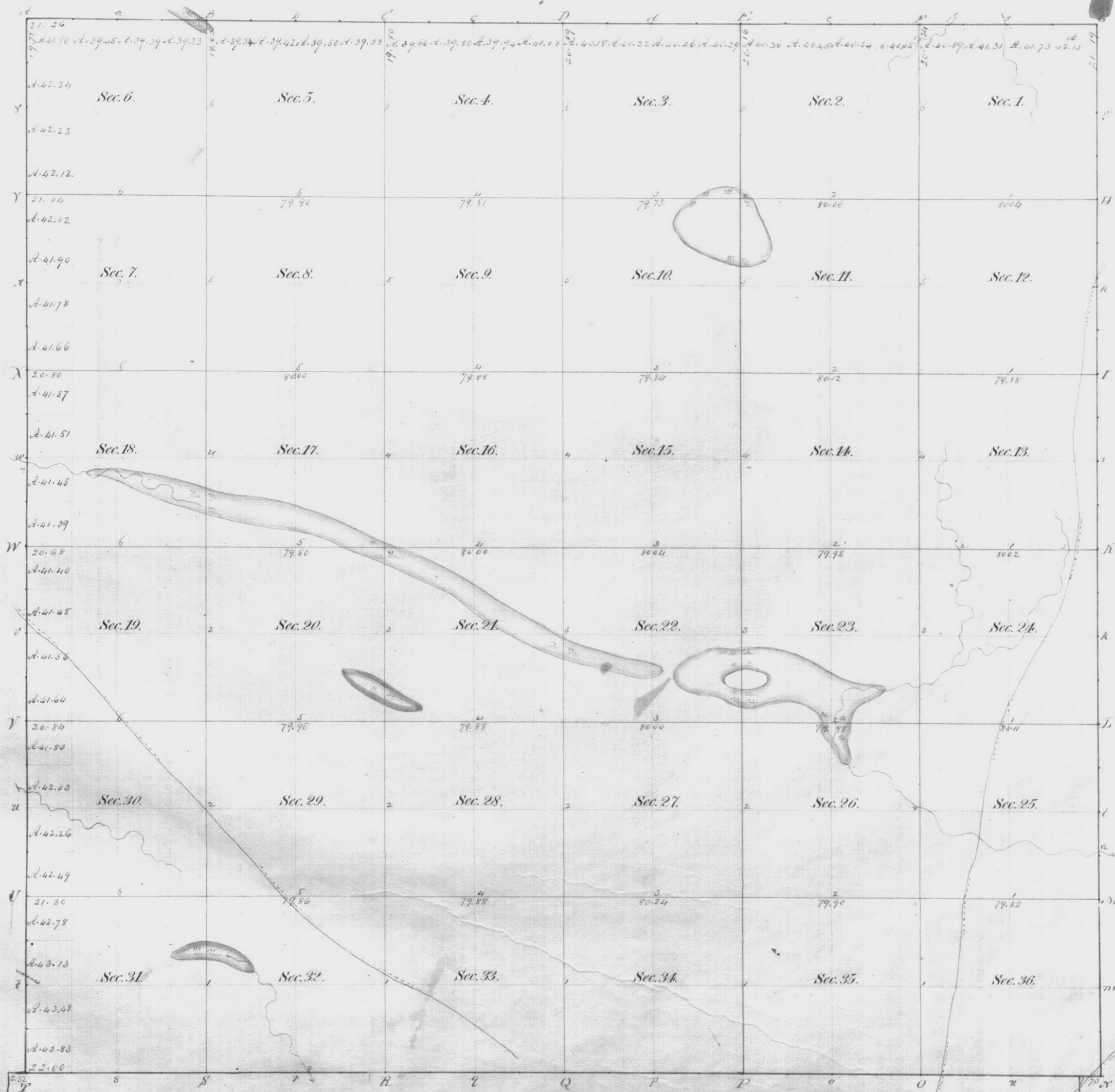


Surveyed in 1837 by *W. A. S. A. Burt*, Deputy Surveyor.

I certify that the above is a true copy of the Original plat in this Office.  
 Surveyor General's Office } *Warner Lewis*  
 Dubuque, April 1st 1836 } Sur. Genl



Township N<sup>o</sup> 79 N.; Range N<sup>o</sup> 3 East of the 5<sup>th</sup> Mer.



Surveyed in 1837 by W. A. & A. Burt, Deputy Surveyor.

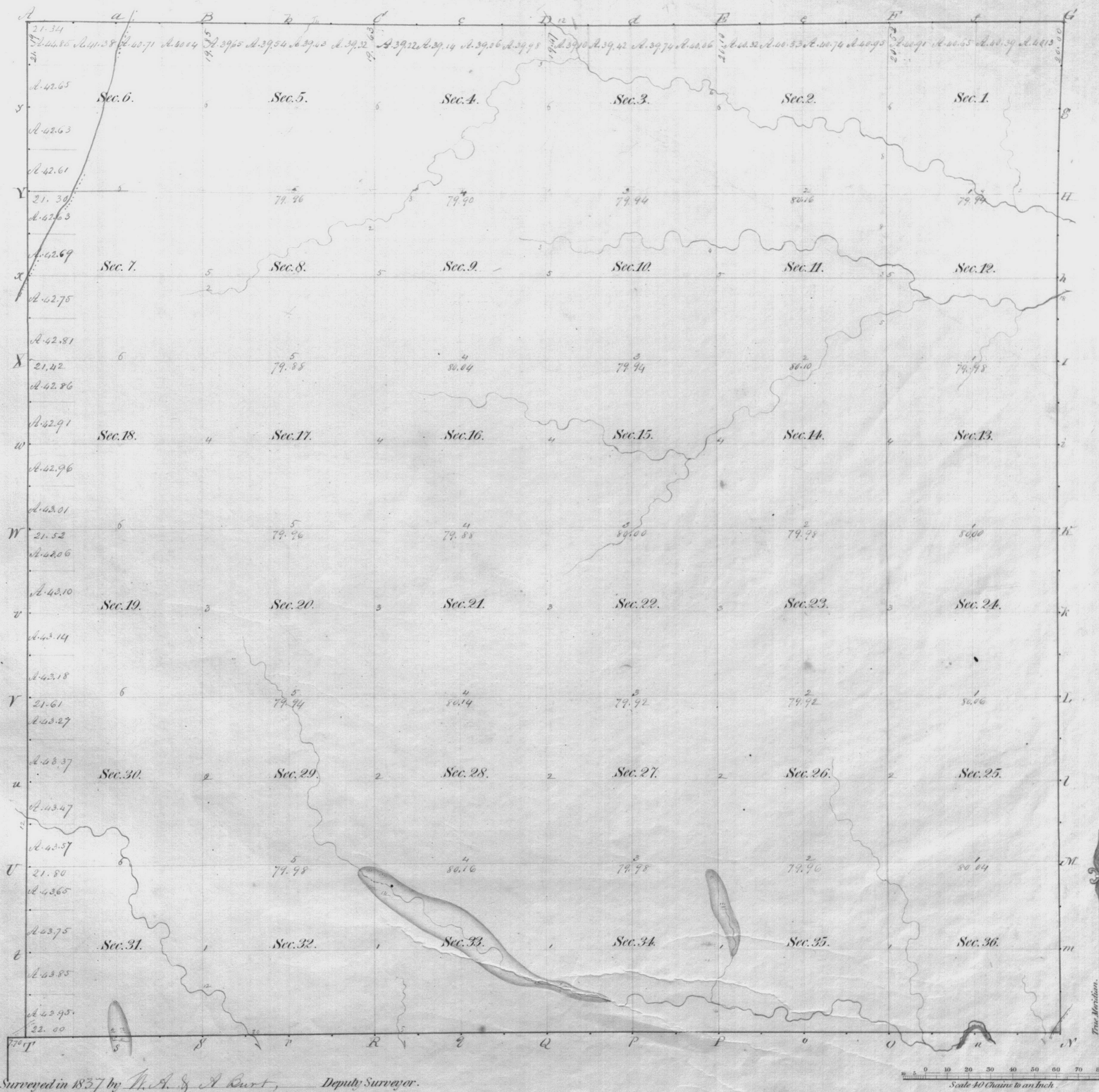
Scale 40 Chains to an Inch.

I certify that the above is a true copy of the Original plat in this Office.

Surveyor General's Office  
 Dubuque, April 1st 1836

Warner Lewis  
 Sur<sup>r</sup>. Genl

Township N<sup>o</sup> 79 N., Range N<sup>o</sup> 4 East of the 5<sup>th</sup> Mer.



Surveyed in 1837 by N. A. & A. Runt, Deputy Surveyor.

I certify that the above is a true copy of the  
 Original plat in this Office.  
 Surveyor General's Office  
 Des Moines, April 1st 1856

Warner Sewer  
 Sur. Gen.

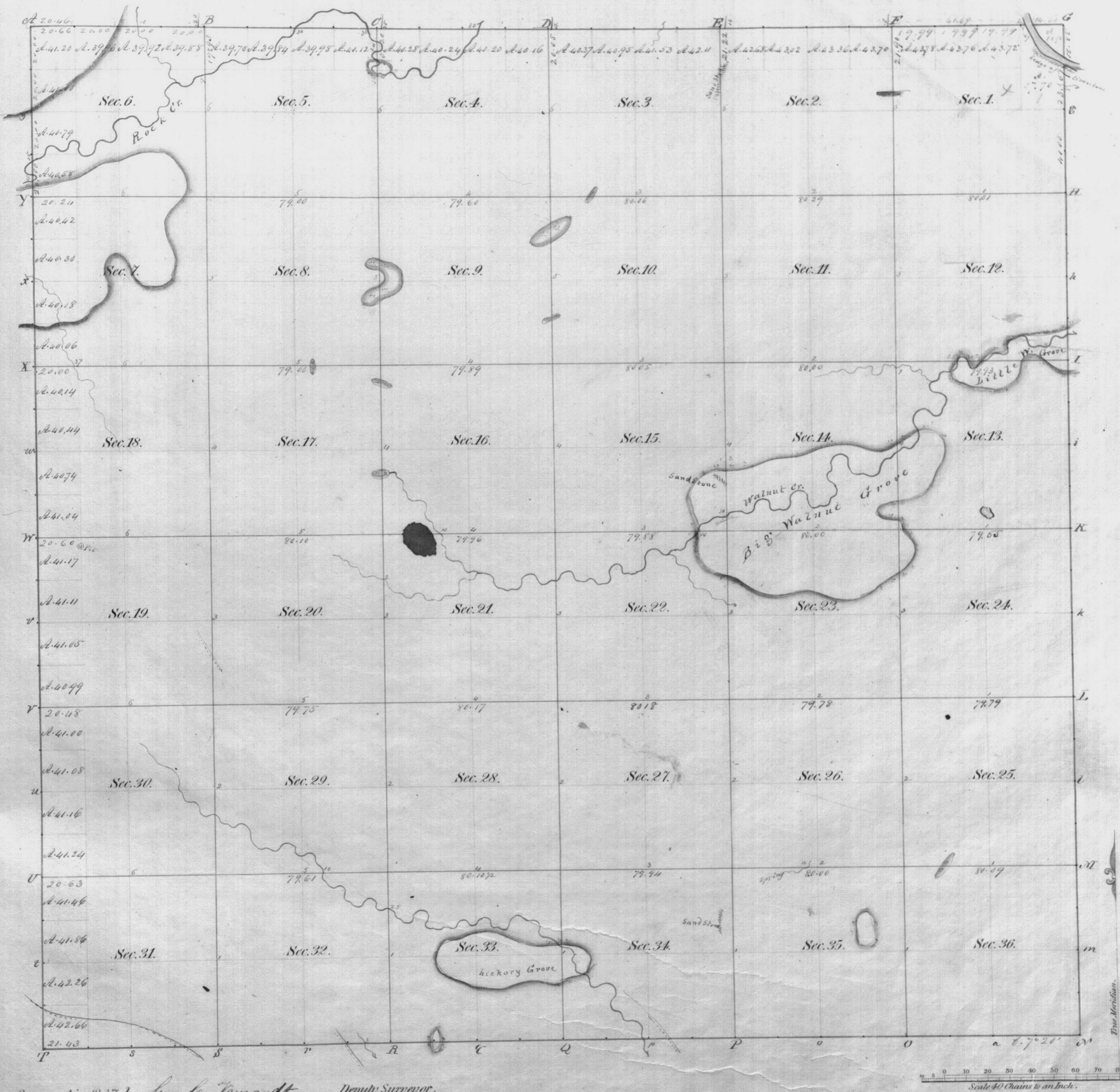
Township N<sup>o</sup> 79 N: Range N<sup>o</sup> 5 East of the 5<sup>th</sup> Mer.



Surveyed in 1837 by M. A. & A. Burt, Deputy Surveyor.

1834  
at Rock 1 Rapids.  
I certify that the above is a true copy of the  
Original plat in this Office.  
Surveyor General's Office  
Dubuque, April 1st 1856  
Warren Lewis  
Sur. Genl

Township N<sup>o</sup> 80. N. Range N<sup>o</sup> 1 East of the 5<sup>th</sup> Mer.

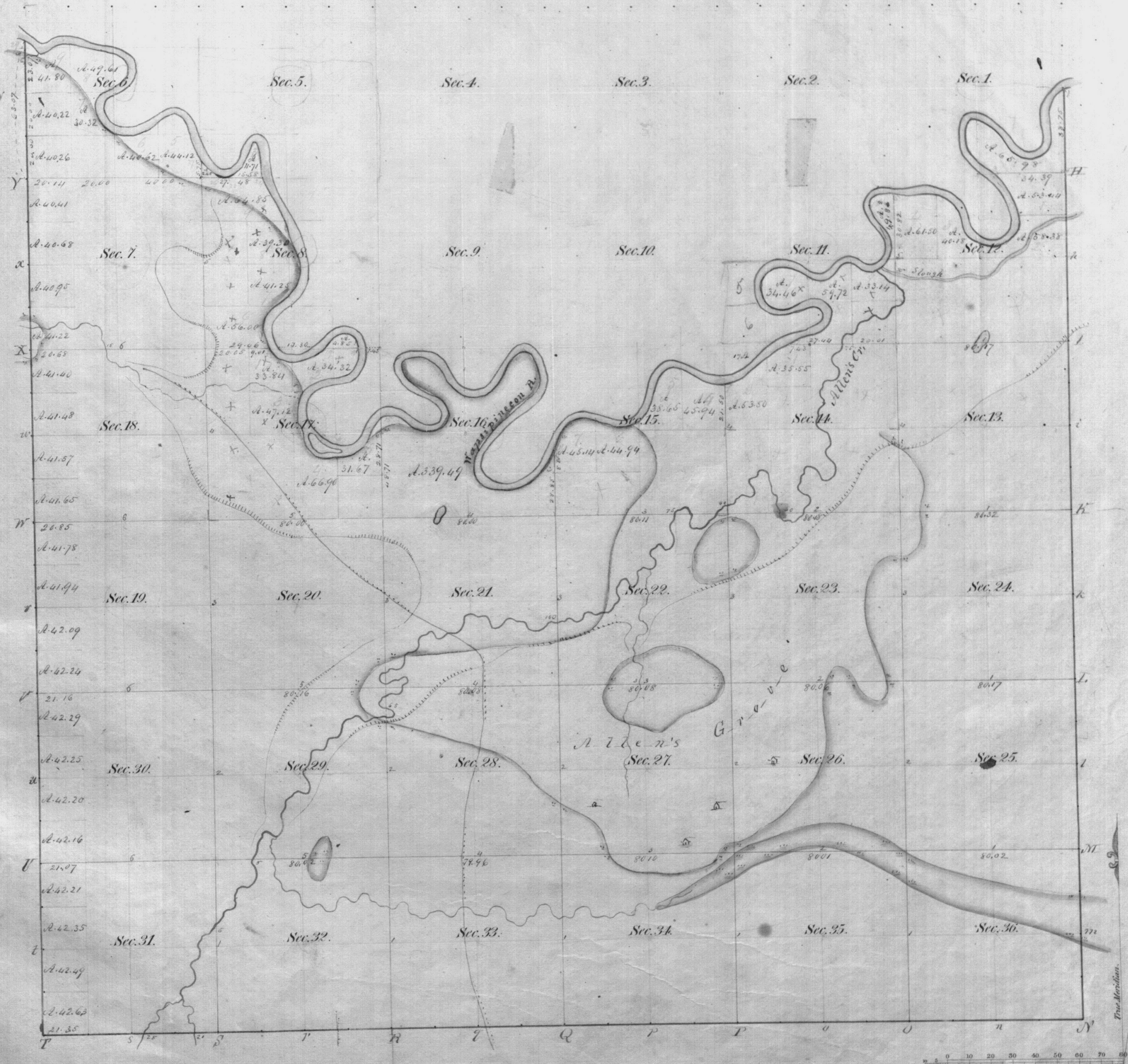


Surveyed in 1837 by Geo. C. Tanguet Deputy Surveyor.

I certify that the above is a true copy of the  
Original plat in this Office.  
Surveyor General's Office  
Dubuque, April 10<sup>th</sup> 1836

Warner Lewis  
Sur. Genl

Township N<sup>o</sup> 80 N. Range N<sup>o</sup> 2 East of the 5<sup>th</sup> Mer.



Surveyed in 1837 by W. S. Burt, Deputy Surveyor.

I certify that the above is a true copy of the  
Original plat in this Office.  
Surveyor General's Office  
Dubuque, April 17 1836

Warren Surr  
Sur. Genl

Township N<sup>o</sup> 80 N., Range N<sup>o</sup> 3 East of the 5<sup>th</sup> Mer.



Surveyed in 1837 by *H. A. J. A. Burt*, Deputy Surveyor.

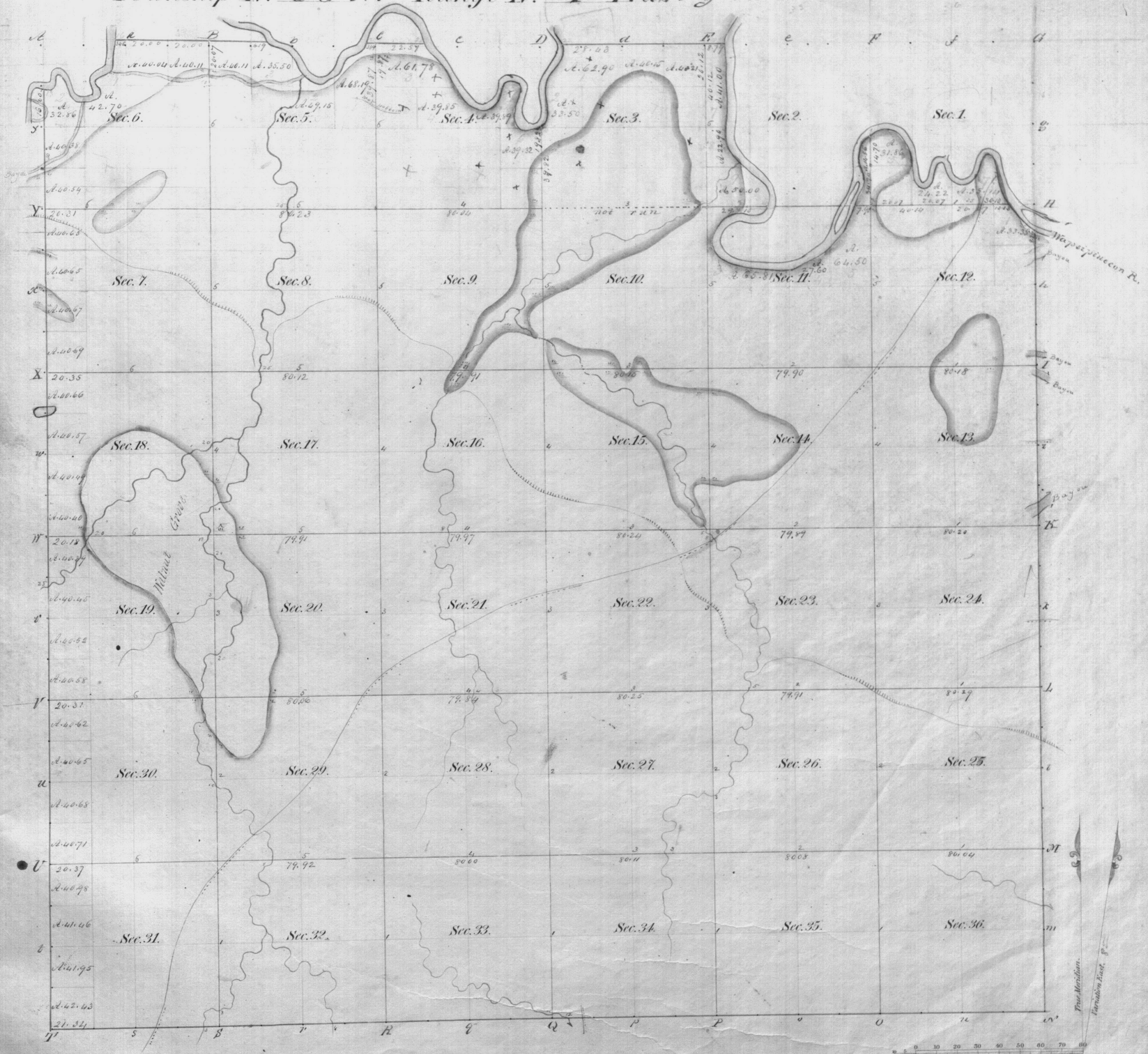
I certify that the above is a true copy of the  
Original plat in this Office.

Surveyor General's Office

Dubuque, April 10<sup>th</sup> 1856

*Warner Lewis*  
Surv<sup>r</sup> Genl

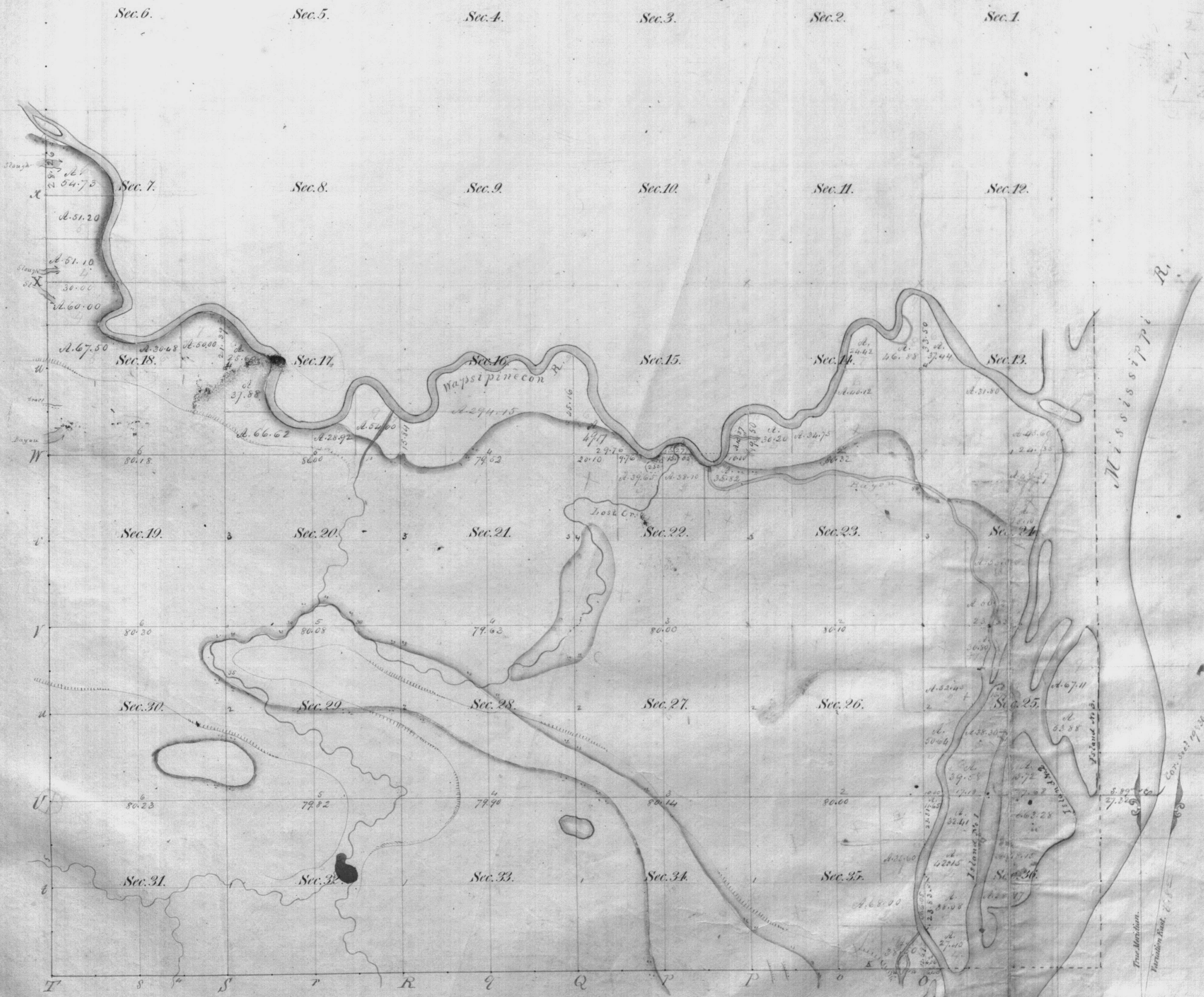
Township N<sup>o</sup> 80 N. Range N<sup>o</sup> 4E East of the 5<sup>th</sup> Mer.



Surveyed in 1837 by H. A. De A. Curt, Deputy Surveyor.

I certify that the above is a true copy of the Original plat in this Office.  
 Surveyor General's Office  
 Dubuque, April 1st 1854  
 Warner Sewell  
 Sur. Genl.

Township N<sup>o</sup> 80 N., Range N<sup>o</sup> 5 East of the 5<sup>th</sup> Mer.



Surveyed in 1837 by *M. A. J. A. Rust,* Deputy Surveyor.

I certify that the above is a true copy of the Original plat in this Office.  
 Surveyor General's Office  
 Dubuque, April 14 1856  
*Harner Lewis*  
 Sur. Genl.



Township N<sup>o</sup> 81 N Range N<sup>o</sup> 4 East 5<sup>th</sup> Mer.

Sec. 6.                      Sec. 5.                      Sec. 4.                      Sec. 3.                      Sec. 2.                      Sec. 1.

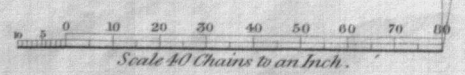
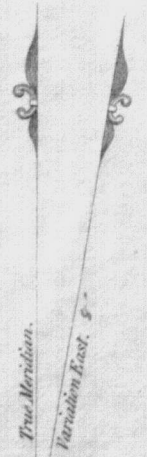
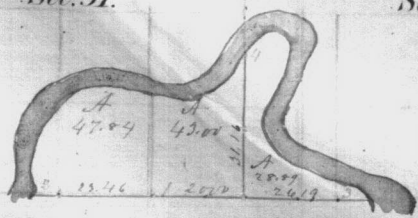
Sec. 7.                      Sec. 8.                      Sec. 9.                      Sec. 10.                      Sec. 11.                      Sec. 12.

Sec. 18.                      Sec. 17.                      Sec. 16.                      Sec. 15.                      Sec. 14.                      Sec. 13.

Sec. 19.                      Sec. 20.                      Sec. 21.                      Sec. 22.                      Sec. 23.                      Sec. 24.

Sec. 30.                      Sec. 29.                      Sec. 28.                      Sec. 27.                      Sec. 26.                      Sec. 25.

Sec. 31.                      Sec. 32.                      Sec. 33.                      Sec. 34.                      Sec. 35.                      Sec. 36.



Surveyed in 1827 by Wm. S. West Deputy Surveyor.

I certify that the above is a true copy of the Original plat in this Office.  
 Surveyor General's Office  
 Dubuque April 1<sup>st</sup> 1836.

Sur. Genl.