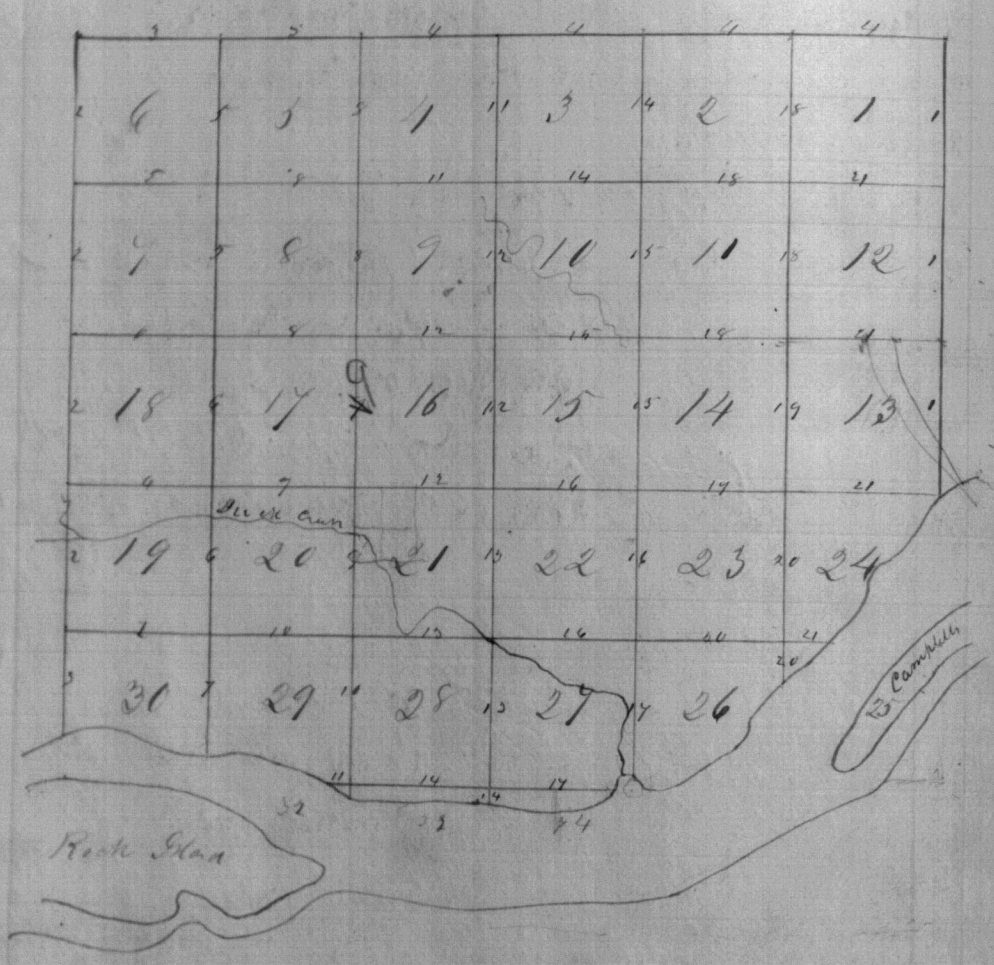


Index Diagram to Journals 1847
 Rema 4 & 5 Pm Scotch Lona.



For the an des Dupays 22, 23, 24, 25,
 306, 307, 308, 309

Dumplings to 78 at Ranch on 4 C 5 P in summer

Cart Boundary.

Track On the East side of Sec 1 78 x 4 6
1 Cor 5-6

12.40 To a well 14 th in dia ib same C.

19.90 To a Br well 10 in in dia.

37.00 To a well 4 th C.

40.50 Put a post at the gr sec cor

M well 20 in in dia by 1 5-11 211 th

M well 4 in in dia by 1 60-11 172 th

44.00 Enter a prairie field.

56.50 Leave the field.

80.50 Put a post at the Cor to Sec 1 12 made a mound of earth from a post 4 th C.

Track On the East side of Sec 12.

20.00 Put a post at the gr sec cor made a mound of earth from a post 4 th C.

42.00 Enter prairie, ib to 11.

48.50 Cross and Mississippi Bluff.

50.00 Put a post at the Cor to Sec 12 11.

M well 18 in in dia by 1 51-6 47 th

M well 22 in in dia by 1 83-6 20 6 th

Track On the East side of Sec 13.

50.00 Enter prairie bottom ib to 11.

40.00 Put a post at the gr sec cor made a mound of earth from a post 4 th C.

50.00 Put a post on Right bank of Mississippi River Cor to Sec 13 11 made a mound of earth from a post 4 th C.

2
 Township No 78 of Range in 4 & 5 Sh. Co.
 Ch. 14

West Boundary

Established a Down Corner at 7.40 1/2
 1/2 of Cor to Town 79 R 3 E. from which
 Down South. The post at this corner
 was not found at the time of making
 the mound. Consequently no mound -
 South On the East Side of Sec 1 & 78 R 3 E
 Jan 7.50 E

- 40.00 Put a post for gr sec cor in pr am, which
 could not afterwards be found so no mound made.
- 50.00 Put a post at the Cor to 1 & 12, no mound.

South On the East Side of Sec 12.

Jan

- 40.00 Put a post at the gr sec cor, no mound.
- 50.00 Put a post at the Cor to Sec 12, no mound.

South On the East Side of Sec 13.

Jan

- 38.10 To a Steam 12 1/2 hrs ride from S.E.
- 41.00 Put a post at the gr sec cor, no mound.
- 43.30 To a Steam 14 hrs ride from S.W.
- 45.75 " " " " " " " " " " " "
- 48.00 " " " " " " " " " " " "
- 49.60 " " " " " " " " " " " "
- 52.90 " " " " " " " " " " " "
- 57.00 Put a post for the Cor to 13 & 24, no mound.

South On the East Side of Sec 24

Jan

- 13.60 To a Steam 12 hrs ride from S.E.
- 20.75 Bend of Down from N to S.
- 24.00 At the pr am.
- 24.10 To a Steam 25 hrs ride from S.E.

Winneshopuk 18th May 46 5th Dec 1846

- 40.70 Set a post at the grade corner
at Ball's Call 9 m in dia by 1897 11 138 44
at 2d Call 4 m in dia by 1897 11 109 44
- 50.70 To a Hickory 6 m in dia.
- 50.70 Set a post at the Corner Dec 24 125.
at Hickory 10 m in dia by 1897 11 245
at 1st Call 14 m in dia by 1897 11 501

Work On the East Side of Dec 25.

- 40.70 Set a post at the grade corner
at 1st Call 14 m in dia by 1897 11 54
at 2d Call 14 m in dia by 1897 11 182
- 50.39 To a Wagon Road by N. E. M.
- 57.39 Set a post on Right Bank of the
Mississippi River
at 1st Call 16 m in dia by 1897 11 365
at 2d Call 6 m in dia by 1897 11 95.
Foot of strong rise 40 ft. west and 74 ft. south.
In Course of the River in 1811.

North Boundary.

- East On the South Side of Dec 31 1846
Bar 8 6
- 9.50 To a Run 3 m in dia by 1 m in dia.
- 40.70 Corner a marsh.
- 42.00 Set a post for the grade corner in a mark
to set to make a mound.
- 43.50 Clear the marsh.
- 52.00 Set a post for the Corner Dec 31 1846
made a mound of earth 4 ft 4 in.

East On the South Side of Dec 22.
Bar 8 208

Membership No 78 of Range No 46 5 P M
 Check

25.00 To a Creek 20 lbs made up runs S.E.
 4.00 Put a post at the gr sec cor. made a
 mound of earth from a pit 4th E.
 8.75 Put a post at the Cor to Secs 33 34 1)
 made a mound of earth pit 4th S.

East On the North Side of Sec 33,
 Jan 8 456

15.00 To a Run 5 lbs made up runs S.E.
 4.00 Put a post at the gr sec cor. made
 a mound of earth from a pit 4th E.
 8.00 Put a post at the Cor to Secs 33 34 1) made
 a mound of earth from a pit 4th S.

East On the North Side of Sec 34
 Jan 8 406

4.00 Put a post at the gr sec cor. made a
 mound of earth from a pit 4th E.
 8.10 Put a post at the Cor to Secs 34 35, 1)
 made a mound of earth from a pit 4th S.

East On the North Side of Sec 35,
 Jan 8 306

22.50 To a Run 3 lbs made up runs N.
 4.00 Put a post at the gr sec cor. made
 a mound of earth from a pit 4th E.
 8.00 Put a post at the Cor to Secs 35 36 1)
 made a mound of earth pit 4th S.

East On the North Side of Sec 36
 Jan 8 206

5.00 To a Creek 20 lbs made up runs S.E.
 13.50 To a Stream 10 lbs made up runs S.
 35.00 To a Creek 20 lbs made up runs N.E.

Quadrant at 18th Camp at 4 & 5 The Sun

- 33.51 Center a Grove at 1st St.
- 36.42 To a Ditch 12 mi in dia.
- 40.00 Put a post at the grade cor
at Walnut 8 mi in dia to West 5th
at Walnut 13 mi in dia to 1st & 13th
- 41.00 Center a Grove at 1st St.
- 41.51 To a Canal 20 lbs made at same S.C.
- 41.00 To a Stream 5 lbs made at same S.
- 44.51 To a Pond at 1st St.
- 50.00 Put a post at the Cor of Quadrant 11th
at Range 4+5 & made a mound of
Earth from a pit 4th S.

Subdivision.

- South on the Line at Dec 8 16
Jan 7 30 6
- 40.00 Put a post at the grade cor made a
mound of Earth from a pit 4th S.
- 51.00 Put a post at the Cor to Dec 5. 6. 7. 8. 11
made a mound of Earth pit 4th S.

- West on the Line at Dec 6 17
Jan 8 16
- 49.86 Entered Camp Line 20 lbs of grade cor

- East on the Line at Dec 6 17
Jan
- 49.93 Put a post at the grade cor made a
mound of Earth from a pit 4th S.
- 49.86 To the post at the Cor to Dec 5. 6. 7. 10.

- South on the Line at Dec 7 19
Jan 7 37 6
- 40.00 Put a post for the grade cor made a

Dunsmuir 1878 Transactions 4 C 5 P M Dec
Chadls

mound of earth from a pit 4th 6
8000 Put a post at the Cor to Dec 7. 8. 17 1879
made a mound of earth. pit 4th 5.

West Tandon on the Uni Oct Dec 7 18
Jan 7 52
8004 Intended Range Uni 12th St of Dec cor.

East Concha on the Uni Oct Dec 7 18
Jan 7 57
4002 Put a post at the qd Dec cor made a
mound of earth from a pit 4th 6
8004 To the post at the Cor to Dec 7. 8. 17 1878

East Concha Uni Oct Dec 17 1879
Jan 7 257
4000 Put a post at the qd Dec cor made
a mound of earth from a pit 4th 6.
8100 Put a post at the Cor to Dec 17. 18. 19 12 19
made a mound of earth. pit 4th 5.

West Tandon on the Uni Oct Dec 18 19
Jan 8 056
8008 Intended Range Uni 18th St of Dec cor.

East Concha on the Uni Oct Dec 18 19
Jan -
4004 Put a post at the qd Dec cor made
a mound of earth from a pit 4th 6.
8005 To the post at the Cor to Dec 17. 18. 19 120.

East Concha Uni Oct Dec 19 120.
Jan 7 36
1455 Intended Range Uni 22th St of Dec cor.

Jan 21st 1884
Jan 21st 1884

- 38.00 Center of main of ...
- 40.00 Det a part at the ...
 at 1/2 mile ... 33° 6' 102 1/2
 at 1/2 mile ... 41° 4' 93 1/2
- 39.44 To at 1/2 mile ...
- 79.00 To at road ...
- 81.11 Det a part at the ... 19. 21. 29 1/2
 D's description of ...

- West ... on the ... 19/30
 Jan 5 70° 6'
- 81.00 ... Range ... at ...

- East ... on the ... 19/30
 Jan
- at ... 3 mi ... 24 1/2
 at ... 5 mi ... 73 1/2
- 24.04 To at ... 12 mi ...
- 40.00 Det a part at the ...
 at 1/2 mile ... 57° 6' 157 1/2
 at ... 4 mi ... 122 1/2
- 62.79 To at ... 10 mi ...
- 80.00 Det a part at the ... 19. 21. 29 1/2

- East ... on the ... 29/30
 Jan
- 9.50 To at ... 500 ...
- 31.58 To at ... 16 mi ...
- 40.00 Det a part at the ...
 at 1/2 mile ... 62° 6' 68 1/2
 at ... 20 mi ... 51° 4' 116 1/2
- 48.32 To at ... 10 mi ...
- 52.50 ... the bluff
- 60.00 Top of bluff ...

8
Vancouver, N/S of Prince George & D. 1884
Chilly

65.00 To a House in the C.

65.95 Interest on mortgage for a mortgage for
at 1/2% per annum dia. by 57 1/2 x 13 1/2

Land On the River at Dec 1885
Van

37.81 To a Clerk to the main room G.C.

40.00 To a Clerk at the office on right bank
of River made a mound for 4th C.

40.75 To a Clerk to the main room G.C.

80.00 To a Clerk at the office Dec 4.5.829
made a mound of earth for 4th C.

West Kandom on the River at Dec 1888
Van

50.12 Interest on mortgage for a mortgage for

Land On the River at Dec 1888
Van

40.00 To a Clerk at the office on right bank
made a mound of earth from a pit 4th C.

80.12 To a Clerk at the office Dec 4.5.829.

Land On the River at Dec 1889
Van

40.00 To a Clerk at the office on right bank
made a mound of earth from a pit 4th C.

80.00 To a Clerk at the office Dec 8.9.16+17
made a mound of earth for 4th C.

West Kandom on the River at Dec 1887
Van

49.55 To a Clerk to the main room G.C.

79.92 Interest on mortgage for a mortgage for

Parish of St. Paul's Church in the City of New York
1811

Cart Comptrol on the Vine St Dec 8 1811

Jan

39.96 Put a pint at the grape in made a mark
of bark also a fine a pint at 6.

79.92 Put a pint at the grape in Dec 8. 9. 10 11.

Cart Comptrol on the Vine St Dec 16 1811

Jan

40.00 Put a pint at the grape in made
a mark of bark from a pint at 6.

57.00 Cart Comptrol on the Vine St.

80.00 Put a pint at the grape in Dec 16 17 18 19 20 21

at the Call 8 in in dia by 1 1/2 11 13 14
at the Key 10 in in dia by 1 1/2 11 13 14

Cart Comptrol on the Vine St Dec 17 1811

Jan

68.00 Put a pint at the grape in made a mark of bark

70.00 Put a pint at the grape in made a mark of bark

79.94 Put a pint at the grape in made a mark of bark

Cart Comptrol on the Vine St Dec 17 1811

Jan

30.71 Put a pint at the grape in made a mark of bark

39.99 Put a pint at the grape in made a mark of bark

at the Call 8 in in dia by 1 1/2 11 13 14

at 13 Call 4 in in dia by 1 1/2 11 13 14

39.41 Put a pint at the grape in made a mark of bark

79.94 Put a pint at the grape in made a mark of bark

Cart Comptrol on the Vine St Dec 20 1811

Jan

15.80 Put a pint at the grape in made a mark of bark

24.27 Put a pint at the grape in made a mark of bark

December 10 8th Range to 4 & 5 P.M.
1914

- 3300 To a house 2 1/2 hrs. East.
- 3400 Out a post at the gr. sec cor.
M Call 8 mi in dia by T 50: N 155 25
- M Call 10 mi in dia by T 48: E 49 25
- 3518 To a Hickory 8 mi in dia.
- 3600 Out a post at the cor to Secs 20-21-28-29
M Call 5 mi in dia by T 55: E 58
- M Hickory 6 mi in dia by T 81: N 94.

Jan 1st Tandon on the Vm Feb Dec 20 129

- 79.00 To a Road 15 mi S. E.
- 8112 Entrench M Call 12 mi Top sec cor.

East America on the Vm Feb Dec 20 129

- 115 To a Hickory 8 mi in dia.
- 26.39 To a Hickory 10 mi in dia.
- 11.56 Out a post at the gr. sec cor made a
M Call 24 mi in dia by N 58: W 22 1/2
- M Call 18 mi in dia by T 60: N 109 1/2
- 42.70 To a Hickory 7 mi in dia.
- 56.60 To a Hickory 4 mi in dia.
- 80.12 To the post at the cor to Secs 20-21-28-29

South on the Vm Feb Dec 28 129

- 9.98 To a Hickory 4 mi in dia.
- 11.00 Out a post at the gr. sec cor
M Call 20 mi in dia by N 6: E 128 1/2
- 11.50 Along bank of Mississippi River.
- 15.11 Out a post at the cor to Secs 20-21-28-29
- 51.00 Post of hill between a post.

11

Numbers of 18 at Camp Dec 4 to 5 PM Iowa
the 21st

8000 Got a post at the Cor to Dec 29. 29. 22 133
Made a mound of earth. Feb 4th S.

West On the Vm Feb Dec 29 132

20.30 Antisech Mississippi River & set a post
Made a mound of stone.
In 18 in in air by Feb 6 133

South On the Vm Feb Dec 32 133.

10.42 Antisech Mississippi River & set a post
Made a mound of stone.

South On the Vm Feb Dec 34

4000 Got a post at the grass cor. Made a
mound of earth from a post 4th S.
8000 Got a post at the Cor to Dec 34. 9 + 10
Made a mound of earth. Feb 4th S.

West Kanawha on the Vm Feb Dec 4 + 9

20.65 To a stream 15 lbs. made it runs L. S.
25.00 To opening in the M.
35.00 To an open opening in the M.
8006 Antisech 34 lbs of the Dec cor on 4th S

East Kanawha on the Vm Feb Dec 4 + 9

4003 Got a post at the grass dec cor. Made a
mound of earth from a post 4th S
8004 Post a post at the Cor to Dec 3. 4. 9 + 10.

Deerbury No 18 at Panama No 4 & 5 D. O. A. Chalk

South America on the Simi bet Dec 9 110.

Jan

13.54 Sea Steam 15 hrs made to a cor. S. C.

40.00 Set a post at the gr see cor made a mound of earth from a post 4th C.

50.00 Set a post at the Cor to Dec 9. 10. 15 + 16 made a mound of earth. post 4th S.

West Panama on the Simi bet Dec 9 116

Jan

50.02 Set a post at the Simi 6th S of see cor

West Comcha on the Simi bet Dec 9 116

Jan

50.01 Set a post at the gr see cor made a mound of earth from a post 4th C.

50.02 Set the post at the Cor to Dec 9. 10. 15 + 16.

South America on the Simi bet Dec 15 116

Jan

50.00 Set a post at the gr see cor made a mound of earth from a post 4th C.

50.00 Set a post at the Cor to Dec 15. 16. 21 + 22. made a mound of earth. post 4th S.

West Panama on the Simi bet Dec 16 121

Jan

65.00 Entered opening No 2 E.

79.98 Set a post at the Cor to Dec.

West Comcha on the Simi bet Dec 16 121

Jan

69.99 Set a post at the gr see cor in road. post 4th S.

79.99 Set the post at the Cor to Dec 15. 16. 21 + 22

13

Drumshop etc 78 of Kansas 4 85 P the down
Chick

South on the Vm bet Secs 21 22

4000 Det a part at the go Sec cor,
NW Cor 30 mi in dia by 185 1/2 212 1/2
No other Vm near.

4400 Center very thin of unimp to 191 1/2 1/6,
79.80 Duck Creek 40 mi in dia runs E. S. W.
8000 Det a part at the Cor to Sec 21 22. 27 28 29
Creek. At 2 Card in in dia by 114. 6 191 1/2

8000
48
3200

West Card on the Vm bet Secs 21 22 28,
Jan

8000 Det on Duck Creek Center bottom.
22.00 Det on the bottom.

1800 Right part of Duck Creek
8014 Det on the Vm bet Secs 21 22 28
12.80
10.40
3.70
26.99

East, Connected on the Vm bet Secs 21 22 28
Jan

1600 Det on Hickory 30 mi in dia
40.07 Det a part at the go Sec cor.
NW Cor 28 mi in dia by N 35 W 110 1/2
SE Cor 10 mi in dia by S 12 1/2 W 80 1/2

4000
29
13.00

6750 Det on NW Cor 18 mi in dia
8014 Det on the part at the Cor to Sec 21 22 27 28

South on the Vm bet Secs 27 28 29,
Jan

13.50 Center a prairie of the Vm
32.00 To prairie ground
33.50 Det on the prairie from a W of the
4000 Det a part at the go Sec cor made from a
South from a part of the Vm
55.00 Second Bluff of Mississippi River

Partnership in 78 at Kansas to A C & D
Chas

15.00 Part of the Bluffs to E.H.S.
90.00 Put a post at the cor to Dec 27. 20. 33
134 1/2 mile around of Church Jan 4th 48

West P and em on the Vini Oct Dec 28 33
Jan

35.00 Enter a fence to W.S.
62.50 See on the fence
90.12 Entrance to the Vini & the top of cor

East Concordia on the Vini Oct Dec 28 33
Jan

40.00 Put a post at the top of cor in 1/2 mile
around of Church Jan 4th 48
91.12 Set the post at the cor to Dec 27. 28. 33 34

South on the Vini Oct Dec 33 34
Jan

6.50 Enter a Concordia
13.00 See on the Concordia
14.03 Entrance to the Mississippi River Set a
post after the Concordia
He allowed 19 in in dia to \$75. 6 86

South on the Vini Oct Dec 21 3
Jan

40.00 Put a post at the top of cor made
a mound of Church Jan 4th 48
90.00 Put a post at the cor to Dec 2. 3. 10 11
Made a mound of Church Jan 4th 48

West P and em on the Vini Oct Dec 31 10
Jan

20.5 To a stream & the side of river to

15

Membership No 78 at Rank of 65 in the
Class

8010 Entered MS on 14th of Dec.

Car Monument on the 1st Dec 9 110

4003 Put a post at the top of the car & made a
mound of earth from a pit 4 ft 6 in

8011 Put the post at the top of the car 2.3.10 111.

Put Monument on the 1st Dec 10 111

22.00 Put a stream 3 1/2 m in ch to 1/2 lb.

33.50 Put a stream 4 1/2 m in ch to 1/2 lb.

4004 Put a post at the top of the car & made a
mound of earth from a pit 4 ft 6 in

46.00 Enter opening of 1/2 lb & 1/2 lb.

79.36 Put a stream 4 1/2 m in ch to 1/2 lb.

80.00 Put a post at the top of the car 10.11.14 115.

Put Monument on the 1st Dec 10 115

Put Monument on the 1st Dec 10 115

Put Monument on the 1st Dec 10 115

10 Put a post 15 lbs in ch to 1/2 lb.

10.07 Enter a post in ch to 1/2 lb.

79.88 Entered MS on 14th of Dec.

Car Monument on the 1st Dec 10 115

79.90 Put a post at the top of the car & made a
mound of earth from a pit 4 ft 6 in

79.88 Put the post at the top of the car 10.11.14 115.

Put Monument on the 1st Dec 14 115

Parish No 18 of Rome No 4 & 5 Pand
1825

- 3.60 Sea at 4th mile of Penn. Co.
- 4.50 Sea at Call 18 mi in dia.
- 15.15 Sea at 15th mile of Penn. Sec.
- 1070 Det a post at the op see cor made a mound of earth from a pit 4th Co
- 8000 Det a post at the Corth Sec 14.15.22.23 with Call 4 mi in dia by 930 & 77 1/2 with Call 3 mi in dia by 166 & 69 1/2

West Pandora on the Vini at Dec 15 1822
Jan

- 10.10 Enter a grain.
- 57.70 To Plymouth grounds.
- 61.75 View the Plymouth grounds.
- 75.00 Enter Tanna is by S.E.
- 79.96 Det a post at 20th Sec of Sec. cor.

East Concordia on the Vini at Dec 15 1822
Jan

- 39.99 Det a post at the op see cor made a mound of earth from a pit 4th Co.
- 79.96 Det a post at the Corth Sec 14.15.22.23

Point on the Vini at Dec 22 1823
Jan

- 9.00 View the opening is by S.E.
- 4000 Det a post at the op see cor made a mound of earth from a pit 4th Co.
- 6000 Enter opening is by S.E.
- 9000 Det a post at the Corth Sec 22.23.26.27
Mickay 11 mi in dia by 95 & 135
At a Call 6 mi in dia by 74 & 121

West Pandora on the Vini at Dec 22 1823
Jan

1) Munkop 78 of Rangeto 4 to 5 1/2 h. in
Feb 6

- 3.00 Near the opening of the MS.
- 38.00 Center opening of the MS.
- 44.00 Descend a Hill to the S.
- 46.00 Foot of Hill & into bottom.
- 52.50 To a stream 3/4 mi to S. of J. C.
- 79.00 To Duck Creek to S. of J. C.
- 80.12 Antisech on the Vm 22 lbs of Dec 22

Can Connected on the Vm (at Dec 22 1871)

Jan

- 40.00 Det a part at the gr Dec 22.
- At Hickory 12 mi in dia by 167.6 30 lb
- At Duck 4 mi in dia by 94.5 6 16 lb
- 80.12 Other part at the Cor to Dec 22. 23. 24 25.

Can on the Vm Dec 26 1871

Jan.

- 10.00 Near the opening of the MS.
- 15.00 Descend Bluff.
- 22.50 Foot of the Bluff.
- 36.50 Antisech on Duck Creek.
- Offset Carb 238 lb. 530 lb. 238.
- 40.00 Det a part of the gr Dec 22
- At Duck 12 mi in dia by 170.6 231.
- 42.00 Into the Vm.
- 52.00 Saw in it 150 lb worth.
- 52.50 He rise on the Vm.
- 75.45 Antisech Massachusetts River at the mouth
of Duck Creek.
- At Duck 14 mi in dia to Cor.

Can on the Vm Jan 27 1874

Jan

40.00 Det a part at the gr Dec 22 & made a

Parish No 78 N. P. Range No. 4 & 40
Chats

amount of earth from a pit 4th C
67.28 Entered Mississippi River & set a
one on the job
A. Cherry 10 mi in dia No 117 6445

Truck On the Vini Feb Dec 11 12
Pan

4000 Put a spot at the go Dec 11 made
a amount of earth from a pit 4th C.
9070 Put a spot at the Cor to Dec 1. 2. 11 12
made a amount of earth pit 4 U.S.

W. Randon on the Vini Feb Dec 2 11
Pan

79.92 Entered MS Vini 20th Dec 11

East Connected on the Vini Feb Dec 2 11
Pan

39.94 Put a spot at the go Dec 11 made
a amount of earth from a pit 4th C
79.92 Set the job at the Cor to Dec 1. 2. 11 12

Truck On the Vini Feb Dec 11 12
Pan

4000 Put a spot at the go Dec 11 made
a amount of earth from a pit 4th C.
6000 Center opening is 1/2 C.
65.77 Sea 12 Cal 12 mi in dia
78.10 To a Vini is No 6 S C.
9000 Put a spot at the Cor to Dec 11. 12. 13 14
A 2 Cal 16 mi in dia by 237.0 103 lb
A 2 Cal 11 mi in dia by 263.0 288 lb

W. Randon on the Vini Feb Dec 11 14.

19

Overship to the Panjo to the Ma...
Ch...
1 am

78.74 To a ledge of Rock at the 4th mile S.
79.86 Intersect 5th S of Dec cor on 1st S.

Can Cometa on the Vini Vol Dec 11 14
1 am

39.93 Det a point at the 9th Dec cor
M. Cat 10 mi in dia to 575 N 10 S
M. Cat 14 mi in dia to 56 N 17 S
79.96 To the 1st cor at the Cor to Dec 11, 12, 13, 14

Can Cometa Vini Vol Dec 13 14
1 am

10.50 To a M. Cat 12 mi in dia.
33.75 To a M. Cat 12 mi in dia.
40.00 Det a point at the 9th Dec cor
M. Cat 18 mi in dia to 519 N 11 S
M. Cat 24 mi in dia to 56 E 83 S
43.59 To a M. Cat 15 mi in dia.
80.80 Det a point at the Cor to Dec 13, 14, 23, 24.
M. Cat 24 mi in dia to 55 N 11 S S
M. Cat 18 mi in dia to 55 E 88 S

West Panjo on the Vini Vol Dec 14 23
1 am

9.82 To a M. Cat 15th mi di to sum S. S. E
11.00 Ascend the Hill.
16.50 To the top of the Hill.
80.36 Intersect 21st S of Dec cor on 1st S.

Can Cometa on the Vini Vol Dec 14 23
1 am

40.18 Det a point at the 9th Dec cor
M. Cat 4 mi in dia to 58 N 34

Parish No 18 Range No 4 to 570
Chad's

Mr Callum in the No 165 to 78-05
80.34 To the point at the Cor to Dec 13, 14, 23, 24

Point on the Vint Feb Dec 23, 24

Jan

15.00 To a Creek 15 lbs made in run bed &
Enter a bottom.

31.00 Harris Run 250 lbs run.

34.40 To a Creek 18 lbs made in run 7-50

38.59 To a Creek 18 lbs made in run Dec

40.00 To a point at the 90 sec cor

18 mi in air to N. W 205.

45.37 To a Creek 18 lbs made run 7-50

55.30 To a Creek 18 lbs made run 7-50

and Enter a ground in the C.

80.70 To a point at the Cor to Dec 23, 24, 25, 26
made a mound of earth 7' 4" C

Point on the Vint Feb Dec 23, 24

Jan

37.50 To a field

47.00 As in a Bluff.

47.60 To the top of opening & lbs made in C.

54.00 To top of Bluff. 16 on the field.

74.10 Enter opening in the C.

80.14 Enter a point at the Vint 16 lbs at 90 sec cor.

Cor on the Vint Dec 25, 26

Jan

40.07 To a point at the 90 sec cor & made
a mound of earth from a pit 4' 4" C.

80.14 To the point at the Cor to Dec 23, 24, 25, 26

Point on the Vint Feb Dec 23, 24

Jan

2003 Intuse of Mississippi River set a mark
at the top.

At Grand Oak 5 1/2 miles N of C.

East Random on the Vm At Dec 24/25

2391 Intuse of Mississippi River set a mark
at in a mound of stone.

West Random on the Vm At Dec 1/12

79.90 Intuse of MS Vm 10 lbs of Dec cor.

East Concordia on the Vm At Dec 1/12

79.95 Put a post at the grade cor made a
mound of earth from a post 4 lbs

79.90 Set the post at the Cor to Dec 1/12.

West Random on the Vm At Dec 12/13

15.00 To a stream 3 lbs in its own S.

79.94 Intuse of MS Vm at the Dec cor.

East Concordia on the Vm At Dec 12/13

20.31 To a D Oak 12 ms in dia.

79.99 Put a post at the grade cor & made a
M Oak 10 ms in dia to 41.6 85 lbs

MS Oak 18 ms in dia to 25.77 43 lbs

79.94 To the post at the Cor to Dec 12/13.

West Random on the Vm At Dec 13/14

Post.

Summit No 78 N. Range No 4 to 5 P.M.
Cash

7000 Near the bottom of the Point
79.88 Intercourse No. 4 lbs of see etc.

Cash Collected on the No. 4 at Dec 13/24
Per

39.94 For a pair of white of see etc I made
a mound of earth from a pit 4 lb etc.
79.88 For the job of the Cor at Dec 13/24.

Meanders of the Mississippi River.
Commencing at a point on Camp Line
Corner of Dec 13/24 on the right bank
of the River, thence down stream.

Line Dec 24

922.00 10.17 At 6.50 down 200 lbs from River.
934.25 13.49 At 13 ch down 150 lbs from River.
945.75 24.35 At 26. ch down 20 lbs from
913.6 1.60
932.6 3.50
914.75 1.92 Head of Campbell's Island N 78 E
933.75 3.00
919.0 6.52 Head of Dillon Island N 4 E 28 E.
Foot of Dillon Island N 134 E.
948.75 11.82
935.75 3.71 To foot in line at Dec 24/25.

Line Dec 25

960.50 10.00 Head 400 lbs from River
Foot of Campbell's Island N 75 E E.
943.75 11.80
977.75 4.80
931.75 12.57 To foot in line at Dec 25/26.

37

23

Friendship at 150th Street to E. St. P. N. Co
 Con. Deb

In Dec 26

- 958.71 6.32
- 949.71 2.60
- 944.71 14.21
- 965.71 11.50
- 971.71 11.20
- 957.71 18.37
- 966.71 3.71
- 953.71 6.16
- 968.71 4.56
- 961.71 3.95
- 187.71 7.33
- 170.71 3.75
- 162.71 7.35

To the job at the Co. to Dec 26 21.

In Dec 27.

- 134.71 2.17
- 171.71 2.62
- 962.71 2.65
- 954.71 6.54
- 912.71 2.80

To March of Stock at East Greenwich
 To the job in dim. W. Dec 27 134.

In Dec 24.

- 924.71 5.75
- 974.71 12.00
- 981.71 9.00
- 948.71 2.00
- 976.71 6.00
- 975.71 12.00
- 185.20th 35.60

To the job in dim. W. Dec 33 134.

In Dec 33.

- 180.71 12.90
- 992.71 4.50

Membership No 98 A. H. Young No. 40 5th St.
 Can. Sirs

136:11 14.50

169:11 23.50

120:11 7.00

144:11 8.50 Head of Rock Island No 935:11.

194:34:11 15.59 To the point on line (No Dec 22 1835.
 Head of Rock Island to 117:11.

In Dec 22.

135:11 13.70 Head of Small Island 526:11.

Foot of Island to 145:11.

173:11 9.42 To the point on line (No Dec 29 1835.

Head of Island 188:11.

Foot of Island 127:11.

In Dec 29.

185:11 8.50

167:11 9.00 Near the Prairie.

174:11 7.50 At 100th Avenue 200th from River.

177:11 5.50

182:11 6.60

187:11 3.00

177:11 11.60

177:11 9.68 To the point on line (No Dec 29 1835.

In Dec 30.

177:11 11.78 At 500 high bluff of River.

182:11 12.00

163:11 4.27

176:11 7.75

189:11 4.60

169:11 3.00

188:11 15.17 Near Irish Bluff.

165:11 6.55 At 500 stream 10th miles

160:11 2.72

Membership No 78 A Range No 4 to E 5th Sec
Chad 25th

4744 4.00 Opposite W R Shorn also same sec. 4

4734 12.55 To West on Range Sec. on west bank
of the river.

Certify that the foregoing is a correct
copy of the records of the General Survey
of Membership No 78 A Range No 4 to E 5th Sec
Iowa on file in this office.
Surveyor General Office
Dubuque Iowa 1856

Geo. Lunt.

[Faint handwritten text at the top of the page]

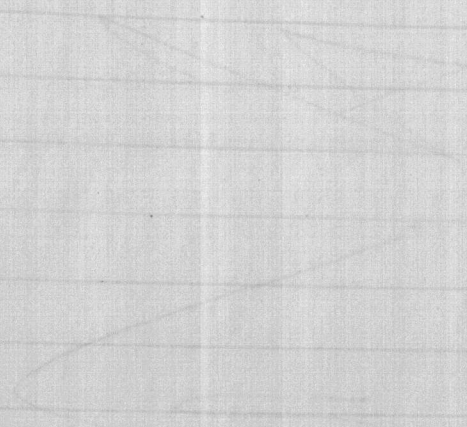
[Faint handwritten text in the upper middle section]

[Faint handwritten text in the middle section]

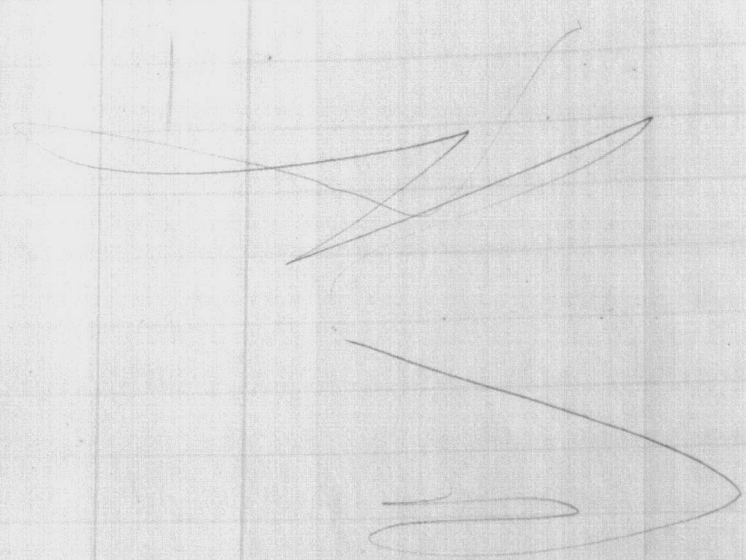
[Faint handwritten text in the lower middle section]

[Faint handwritten text in the lower section]

[Faint handwritten text at the bottom of the page]



272



[A blank vertical label strip is attached to the left edge of the page.]

1	2	3	4	5	6	7	8	9	10
11	12	13	14	15	16	17	18	19	20
21	22	23	24	25	26	27	28	29	30
31	32	33	34	35	36	37	38	39	40
41	42	43	44	45	46	47	48	49	50
51	52	53	54	55	56	57	58	59	60
61	62	63	64	65	66	67	68	69	70
71	72	73	74	75	76	77	78	79	80
81	82	83	84	85	86	87	88	89	90
91	92	93	94	95	96	97	98	99	100

Meanders of the Mississippi River
Chas. S. ...

Meanders of the Mississippi River

S 30 1/2 W 10.00 T. 78 N. R. 4 E. Fifth Mer.

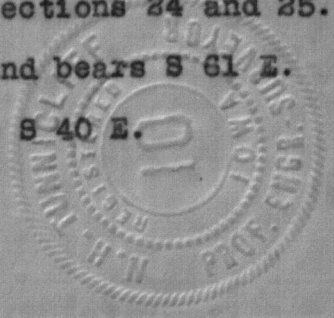
Commencing at post in range line corner of sections 13 and 24 on right bank of the Mississippi River, thence down stream.

In Section 24

- S 52 1/2 W 10.17 At 6.50 house 2.00 from river.
- S 34 1/4 W 13.69 At 13.00 house 1.50 from river.
- S 42 1/4 W 28.25 At 26.00 stream 30 links.
- S 13 E 1.60
- S 32 1/2 E 3.50 September 27, 1837
- S 1 1/4 W 1.92 Head of Camels Island bears N 78 E.
House on right side of Island bears East.
- S 65 1/2 W 10.00 Object in Fourth Principal Meridian on right side of Island bears S 72 E 44.37.
- S 71 W 11.30
- S 33 W 16.35 Same object in Fourth Meridian bears East.
- S 33 W 5.00
- S 55 1/2 W 80.48

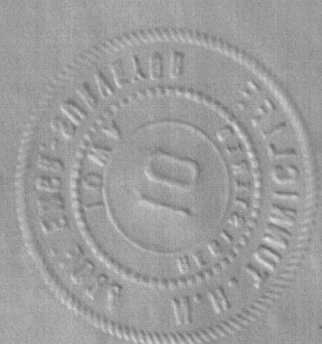
In Section 24

- S 19 W 6.82 Head of Willow Island bears S 28 E.
- S 57 W 7.35 Foot of Do. bears S 13 1/4 E.
- S 48 1/4 W 11.82
- S 32 W 3.70 To post in line between sections 24 and 25.
- S 61 E 104.21 Head of small Willow Island bears S 61 E.
- S 40 E Foot of same Island bears S 40 E.



5170 Put a post on High Bank of Mississippi River Cor. Sec. 10 & 11 made a mound of earth from a post 4th of ...

4.37	N 63 1/2 W
7.73	N 70 1/2 W
<u>4.80</u>	N 50 1/2 W
106.38	
3.00	N 89 W
18.17	N 88 W
6.35	S 03 W
3.73	S 30 1/2 W
4.00	S 47 1/2 W
Opposite Mr. W. R. Shoemaker's house 300 links from R.	
Object on right side of Rock Island bears S 7 W.	
13.35	S 73 1/2 W
43.73	Same object on right side of Rock Island bears S 18 E 26.35.
To post in Range line on right bank of River.	



Manders of the Mississippi River

T. 78 N. R. 4 E. 7th Mer.

Commencing at post in range line corner of sections

13 and 34 on right bank of the Mississippi River, thence down stream.

In Section 34

At 8.50 hours S. 00 from river. 10.17 W 33 1/2

At 13.00 hours 1.50 from river. 13.62 W 34 1/2

At 28.00 stream 30 links. 28.25 W 43 1/2

1.60 E 318

2.50 E 333 1/2

September 27, 1837

1.25 W 1 1/2

Head of Gamala Island bears N 78 E.

House on right side of Island bears East.

Object in fourth principal meridian on right

side of Island bears S 73 E 44.37.

Same object in fourth meridian bears East. 18.25 W 33

5.00 W 33

60.48

In Section 34

Head of Willow Island bears S 33 E. 6.82 W 19

Foot of Do. bears S 12 1/2 W.

11.82 W 45 1/2

To post in line between sections 34 and 35.

3.70 W 33

Head of small Willow Island

Foot of same Island bears



Mississippi No 78 of Range No 4 & 5 1/2 Sec 25

In Section 25

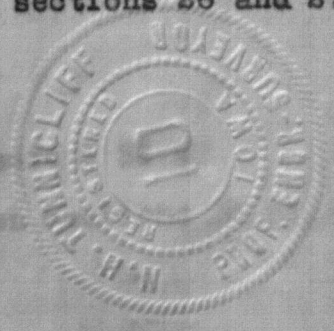
- S 50 1/4 W 10.00 House 4.00 from River.
- S 53 1/4 E 47.99. Foot of Camels Island bears
- S 42 1/4 W 11.83
- S 7 3/4 W 4.80 To post in line between
- S 31 3/4 W 13.57 To post in line between sections 25 and 26.
- 62.54 Foot of Camels Island bears S 85 1/2 E.

In Section 26

- S 38 1/2 W 6.32
- S 19 1/4 W 9.60
- S 24 1/4 W 10.20 Object on left bank of River bears S 3° 25' E.
- S 65 1/2 W 10.00 Same object bears S 15 1/2 E.
- S 71 W 11.20 To Post in line between
- S 57 1/4 W 18.37
- S 66 W 3.70 Same object over river
- S 55 1/4 W 6.16 41.00 Ch.
- S 68 1/2 W 4.56
- S 51 W 3.95
- N 87 W 7.35
- N 70 1/2 W 5.75
- N 62 W 7.35 To corner in line between sections 26 and 27.
- 104.31

In Section 27

- N 34 W 2.17 To Duck Creek 100 links.



56.00 Put a post on High Bank Mississippi River Cor. No. 10. 1844 made a mound of earth from a pit 4 ft. deep.

In Section 25

10.00 Horse 4.00 from River.
 Foot of Camel's Island bears S 85° E 47.98.
 11.83
 4.80
 18.87 To post in line between sections 25 and 28.
 28.84 Foot of Camel's Island bears S 85° E.

In Section 26

6.38
 8.80
 10.30 Object on left bank of River bears S 30° 25' E.
 10.00 Same object bears S 15° E.
 11.30
 12.37
 2.70
 8.18
 4.88
 3.98
 7.32
 8.78
 7.78 To corner in line between sections 26 and 27.



In Section 27

2.12 To Dock Creek 100 links.

Mississippi to 78 of Range, No. 4 & 5 in line

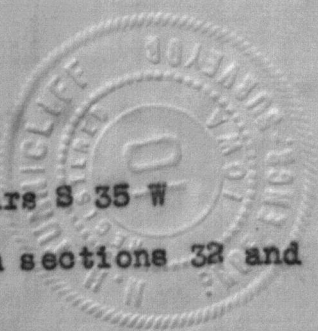
N 71 W 3.63 Head of Rock Island bears S 17 1/2 W 30.00
 S 62 W 2.65 Object over river S 7 1/2 E 48.00 Ch.
 S 54 W 6.54
 S 12 W 2.80 To post in line between sections 27 and 34.

In Section 34

S 24 1/2 W 5.75 To post in line between sections 29 and 34
 S 74 1/2 W 12.00 Head of Island S 3 W
 S 81 1/2 W 9.00 Foot of Do. S 27 1/2 E
 S 48 1/2 W 2.00
 S 70 1/4 W 6.00
 S 75 1/2 W 12.00 Object on left bank of river bears S 24 W.
 S 85°20' W 25.60 To Post in line between sections 33 and 34.
 90.14
 Same object over river bears S 14° 5' E.
 41.69 Ch.

In Section 33

N 82 1/2 W 12.90 To post in line between sections 32 and 33
 S 82 W 4.50
 N 86 1/2 W 14.50
 N 69 1/2 W 23.50
 S 82 1/2 W 7.00
 S 44 W 5.50 Head of Rock Island bears S 35 W
 S 84.34 W 15.59 To post in line between sections 32 and 33.



St. 100 For a post on High Park of Mississippi River Cor. Dec. 10 1844 made a mound of earth from a post 4th of 5.

To post in line between sections 27 and 34. 3.30 W 8 12 3.30 W 8 24 3.30 W 8 33 3.30 W 8 41

In Section 34

Some object over river bears S 14° 5' E. 30.14 41.86 Ch. To Post in line between sections 33 and 34. 33.80 W 8 20' 12.00 W 8 25' Object on left bank of river bears S 84° W. 8.00 W 8 70' 3.00 W 8 48' 2.00 W 8 61' 13.00 W 8 74' 5.75 W 8 84'

In Section 33

Head of Rock Island Pass. 5.50 W 8 44 To post in line between sections 32 and 33. 12.50 W 8 34.34 7.00 W 8 33' 23.50 W 8 30' 14.50 W 8 26' 4.50 W 8 23 12.50 W 8 23'



Manuscript No 78 of Range No 4 & 5 of the same

N 83 $\frac{1}{2}$ W 4.37 Head of Rock Island bears S 17 $\frac{1}{2}$ W 39.58
 N 78 $\frac{1}{2}$ W 7.73 Object over river S 7 $\frac{1}{2}$ E 46.03 Ch.
 N 89 $\frac{1}{2}$ W 4.80
 106.52

In Section 32

N 55 $\frac{3}{4}$ W 13.70 Object over River S 18 E.
 N 38 W 15.17 Head of small Island bears S 26 $\frac{1}{2}$ W.
 N 53 W 8.33 Foot of Do. S 45 $\frac{1}{4}$ W.
 N 73 $\frac{1}{4}$ W 9.42 To post in line between sections 29 and 32.
 106.61 Head of Island S 8 W.
 Foot of Do. S 27 $\frac{1}{2}$ W.

In Section 29

N 85 W 8.50
 N 67 W 9.00
 N 74 W 7.50
 N 77 $\frac{1}{2}$ W 5.50
 N 82 $\frac{1}{2}$ W 6.60
 S 87 $\frac{1}{2}$ W 3.06
 N 71 $\frac{3}{4}$ W 11.60
 N 77 $\frac{3}{4}$ W 9.68 To post in line between sections 29 and 30

In Section 30

N 77 W 11.78 At 5.00 high bluff of R.
 N 56 $\frac{1}{2}$ W 4.76 Head of small Island bears S 38 $\frac{1}{4}$ W.
 Foot of Do. S 46 W.
 N 52 $\frac{3}{4}$ W 12.00 Head of Island S 3 $\frac{3}{4}$ W.
 Foot of Do. S 22 $\frac{1}{2}$ W.



*5100 Put a post on Right Bank of Mississippi
 River Cor. to Sec 10 All made a mound
 of earth from a post 4 ft high.*

Head of Rock Island bears S 17 1/2° W 39.58
 Object over river S 7 1/2° E 46.03 On.

In Section 22

N 55 1/2° W 13.70 Object over River S 18 E.
 Head of small Island bears S 38 1/2° W.
 Foot of Do. S 45 1/2° W.
 To post in line between sections 22 and 23. 9.43
 Head of Island S W. 108.81
 Foot of Do. S 27 1/2° W.

In Section 26

N 82° W 8.50
 N 87° W 9.00
 N 74° E 7.50
 N 77 1/2° W 5.50
 N 82 1/2° W 6.80
 S 27 1/2° W 3.08
 N 77 1/2° W 11.80
 To post in line between sections 26 and 28. 9.68

In Section 30

N 77° W 11.78 At 5.00 high point of R.
 Head of small Island bears S 38 1/2° W.
 Foot of Do. S 46° W.
 Head of Island S 34° W. 13.00
 Foot of Do. S 23 1/2° W.



Handwritten notes at the top of the page, including "Dunbar No 78 of Range No 4 C 5" and "C. H. Dunbar".

- N 62½ W 4.27
- N 76¾ W 7.73
- N 59¼ W 4.60
- 106.58
- N 69 W 3.00
- N 88 W 15.17 Leave High Bluff.
- S 62 W 6.55 At 5.65 stream 10 links.
- S 20¼ W 2.72
- S 47¼ W 4.00 Opposite Mr. W. R. Shoemakers' house 200 links from R.
Object on right side of Rock Island bears S 7 W.
- S 73¾ W 12.35 To post in Range line on right bank of River.
- 43.79 Same object on right side of Rock Island bears S 18 E 26.85.



Footnote or additional note at the bottom of the page: "Set a post on right bank of Mississippi River Cor. to Dec. 1824 made a mound of earth from a post 4th of..."