

LISTING OF COMMUNITIES

COMMUNITY NAME	COMMUNITY NUMBER	LOCATED ON PANEL(S)	INITIAL NFIP MAP DATE	INITIAL FIRM DATE	MOST RECENT FIRM PANEL DATE
BETTENDORF, CITY OF	190240	0360, 0367, 0369, 0370, 0376, 0377, 0378, 0379, 0381, 0383, 0385, 0387, 0388, 0391, 0325*, 0432	June 1, 1978	December 11, 1979	January 19, 2011
BLUE GRASS, CITY OF	190554				
BUFFALO, CITY OF	190241	0433, 0434, 0441, 0452, 0453, 0454, 0456, 0458	September 17, 1980	September 17, 1980	January 19, 2011
DAVENPORT, CITY OF	190242	0303, 0340, 0345, 0355, 0360, 0365, 0367, 0370, 0376, 0378, 0456, 0458, 0460, 0476, 0175	March 1, 1978	March 1, 1978	January 19, 2011
DIXON, CITY OF	190226				
DONAHUE, CITY OF	190505	0185, 0200			
DURANT, CITY OF	190922	0300*			
ELDRIDGE, CITY OF	190574	0200, 0215, 0220, 0335, 0355, 0360	September 1, 1991	September 1, 1991	January 19, 2011
LE CLAIRE, CITY OF	190243	0382, 0384, 0401, 0402, 0403, 0404			
LONG GROVE, CITY OF	190764	0215, 0225			
MAYSVILLE, CITY OF	190282	0200			
MCCAUSLAND, CITY OF	190771	0125, 0250			
NEW LIBERTY, CITY OF	190378	0150*, 0175			
PANORAMA PARK, CITY OF	190506	0387	December 17, 1990	June 15, 1978	January 19, 2011
PRINCETON, CITY OF	190244	0253, 0261, 0262, 0265	November 1, 1979	November 1, 1979	January 19, 2011
RIVERDALE, CITY OF	190245	0386, 0387, 0388, 0389	January 5, 1978	January 5, 1978	January 19, 2011
SCOTT COUNTY (UNINCORPORATED AREAS)	190239	0025*, 0050, 0075, 0100, 0125, 0150*, 0175, 0185, 0200, 0215, 0220, 0225, 0250, 0265, 0265, 0261, 0262, 0265, 0300*, 0310, 0320*, 0329, 0330*, 0335, 0340, 0345, 0355, 0360, 0376, 0377, 0381, 0382, 0383, 0384, 0391, 0401, 0402, 0403, 0404, 0432, 0433, 0434, 0450*, 0451, 0452, 0453, 0454, 0458, 0175, 0310, 0330*	June 1, 1977	June 1, 1977	January 19, 2011
WALCOTT, CITY OF	190675		November 7, 2001	November 7, 2001	January 19, 2011

*Non-Floodable
*Panel Not Printed

MAP REPOSITORIES

(Maps available for reference only, not for distribution.)

- BETTENDORF, CITY OF:
City Hall
1609 State Street
Bettendorf, Iowa 52722
- BLUE GRASS, CITY OF:
City Hall
114 N. Mississippi Street
Blue Grass, Iowa 52726
- BUFFALO, CITY OF:
City Hall
323 Dodge Street
Buffalo, Iowa 52728
- DAVENPORT, CITY OF:
City Hall
228 W. Fourth Street
Davenport, Iowa 52801
- DIXON, CITY OF:
City Hall
808 Davenport Street
Dixon, Iowa 52745
- DONAHUE, CITY OF:
City Hall
106 E. First Avenue
Donahue, Iowa 52746
- ELDRIDGE, CITY OF:
City Hall
305 N. Third Street
Eldridge, Iowa 52748
- LE CLAIRE, CITY OF:
City Hall
325 Wisconsin Street
Le Claire, Iowa 52753
- LONG GROVE, CITY OF:
City Hall
104 S. First Street
Long Grove, Iowa 52756
- MAYSVILLE, CITY OF:
City Clerk's Office
9100 New Liberty Road
Walcott, Iowa 52773
- MCCAUSLAND, CITY OF:
City Hall
305 Salina Street
McClusland, Iowa 52758
- NEW LIBERTY, CITY OF:
City Hall
795 Main Street
New Liberty, Iowa 52785
- PANORAMA PARK, CITY OF:
City Hall
112 Short Street
Pleasant Valley, Iowa 52767
- PRINCETON, CITY OF:
City Hall
311 Third Street
Princeton, Iowa 52768
- RIVERDALE, CITY OF:
City Hall
110 Manor Drive
Bettendorf, Iowa 52722
- SCOTT COUNTY (UNINCORPORATED AREAS):
Department of Planning And Development
518 W. Fourth Street
Davenport, Iowa 52801
- WALCOTT, CITY OF:
City Hall
128 W. Lincoln Street
Walcott, Iowa 52773

MAP DATES

This FIRM Index displays the map dates for each FIRM panel at the time that this Index was printed. Because this Index may not be distributed to unaffected communities in subsequent revisions, users may determine the most current map date for each FIRM panel by visiting the FEMA Map Service Center website at <http://msc.fema.gov> or by calling the Map Service Center at 1-800-358-9616.

Communities annexing land on adjacent FIRM panels must obtain a current copy of the adjacent panel as well as the current FIRM Index. These may be ordered directly from the Map Service Center at the number listed above.

NOTE TO USER

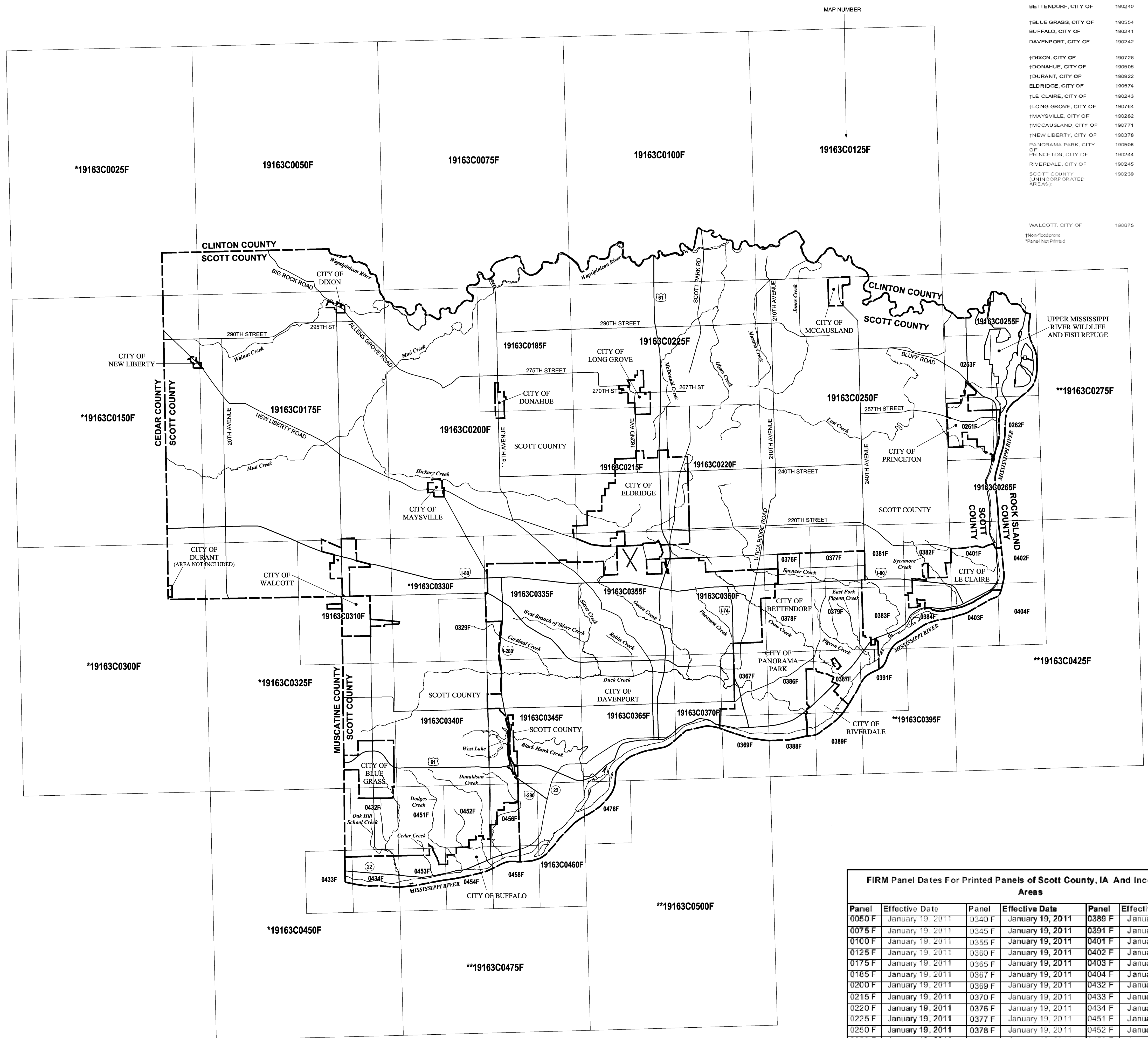
Future revisions to this FIRM Index will only be issued to communities that are located on FIRM panels being revised. This FIRM Index therefore remains valid for FIRM panels dated February 18, 2011 or earlier. Please refer to the "MOST RECENT FIRM PANEL DATE" column in the Listing of Communities table to determine the most recent FIRM Index date for each community.

ELEVATION DATUM

Flood elevations on this map are referenced to the National Geodetic Vertical Datum of 1929. These flood elevations must be compared to structure and ground elevations referenced to the same datum. For information regarding conversion between the National Geodetic Vertical Datum of 1929 and the North American Vertical Datum of 1988, contact the National Geodetic Survey at the following address:
NGS Information Services
NOAA, N/NGS12
National Geodetic Survey
SSMC-3, #9202
1315 East-West Highway
Silver Spring, MD 20910-3282
(301) 713-3242

BASE MAP SOURCE

Base Map Information shown on this FIRM was derived from multiple sources. Base map files were provided in digital format by the Planning and Development Department in Davenport, IA, USGS, Iowa DOT, and NGS.



* PANEL NOT PRINTED - NO SPECIAL FLOOD HAZARD AREAS
** PANEL NOT PRINTED - AREA OUTSIDE COUNTY BOUNDARY

FIRM Panel Dates For Printed Panels of Scott County, IA And Incorporated Areas

Panel	Effective Date	Panel	Effective Date	Panel	Effective Date
0050 F	January 19, 2011	0340 F	January 19, 2011	0389 F	January 19, 2011
0075 F	January 19, 2011	0345 F	January 19, 2011	0391 F	January 19, 2011
0100 F	January 19, 2011	0355 F	January 19, 2011	0401 F	January 19, 2011
0125 F	January 19, 2011	0360 F	January 19, 2011	0402 F	January 19, 2011
0175 F	January 19, 2011	0365 F	January 19, 2011	0403 F	January 19, 2011
0185 F	January 19, 2011	0367 F	January 19, 2011	0404 F	January 19, 2011
0200 F	January 19, 2011	0369 F	January 19, 2011	0432 F	January 19, 2011
0215 F	January 19, 2011	0370 F	January 19, 2011	0435 F	January 19, 2011
0220 F	January 19, 2011	0376 F	January 19, 2011	0434 F	January 19, 2011
0225 F	January 19, 2011	0377 F	January 19, 2011	0451 F	January 19, 2011
0250 F	January 19, 2011	0378 F	January 19, 2011	0452 F	January 19, 2011
0253 F	January 19, 2011	0379 F	January 19, 2011	0453 F	January 19, 2011
0255 F	January 19, 2011	0381 F	January 19, 2011	0454 F	January 19, 2011
0261 F	January 19, 2011	0382 F	January 19, 2011	0456 F	January 19, 2011
0262 F	January 19, 2011	0383 F	January 19, 2011	0458 F	January 19, 2011
0265 F	January 19, 2011	0384 F	January 19, 2011	0460 F	January 19, 2011
0310 F	January 19, 2011	0386 F	January 19, 2011	0476 F	January 19, 2011
0329 F	January 19, 2011	0387 F	January 19, 2011		
0335 F	January 19, 2011	0388 F	January 19, 2011		

MAP INDEX

FIRM FLOOD INSURANCE RATE MAP
SCOTT COUNTY, IOWA
AND INCORPORATED AREAS
(SEE LISTING OF COMMUNITIES TABLE)

MAP INDEX

PANELS PRINTED: 50, 75, 100, 125, 175, 185, 200, 215, 220, 225, 250, 253, 255, 261, 262, 265, 310, 329, 335, 340, 345, 355, 360, 365, 367, 369, 370, 376, 377, 378, 379, 381, 382, 383, 384, 386, 387, 388, 389, 391, 401, 402, 403, 404, 432, 433, 434, 451, 452, 453, 454, 456, 458, 460, 476

MAP NUMBER
19163CIND0A
EFFECTIVE DATE
FEBRUARY 18, 2011

Federal Emergency Management Agency