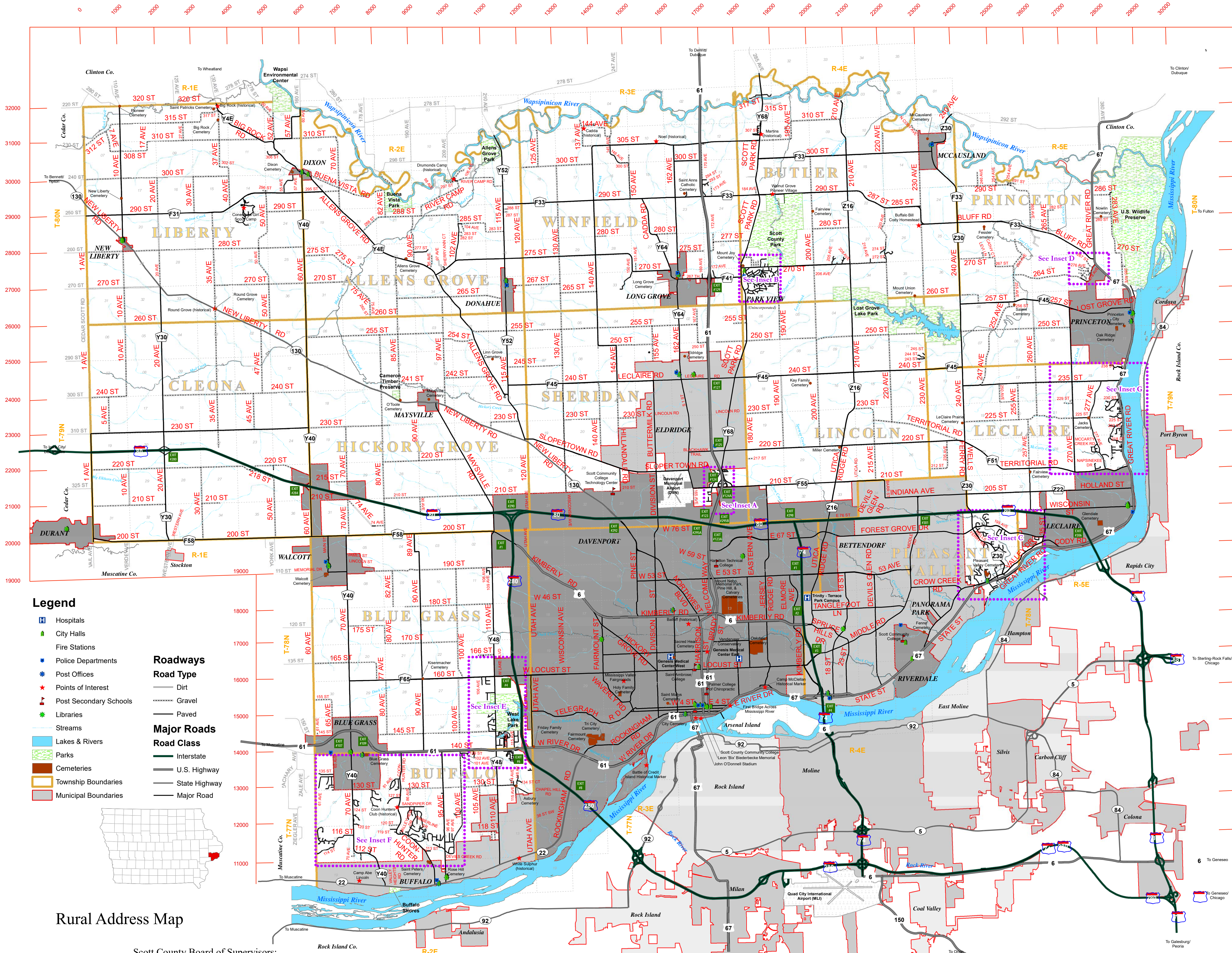


Scott County, Iowa Rural Address Map

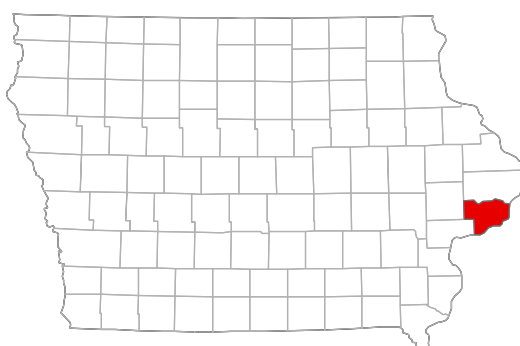


Legend

- Hospitals
- City Halls
- Fire Stations
- Police Departments
- Post Offices
- Points of Interest
- Post Secondary Schools
- Libraries
- Streams
- Lakes & Rivers
- Parks
- Cemeteries
- Township Boundaries
- Municipal Boundaries

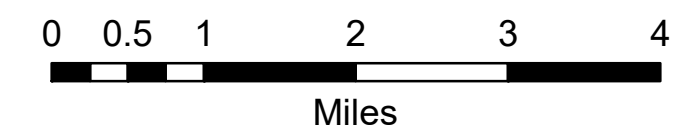
Roadways

- Road Type**
- Dirt
 - Gravel
 - Paved
- Major Roads**
- Road Class**
- Interstate
 - U.S. Highway
 - State Highway
 - Major Road



Rural Address Map

Scott County Board of Supervisors:
 Tony Knobbe - Chairman
 Ken Beck - Vice Chairman
 Carol Earnhardt
 Diane Holst
 Brinson L. Kinzer

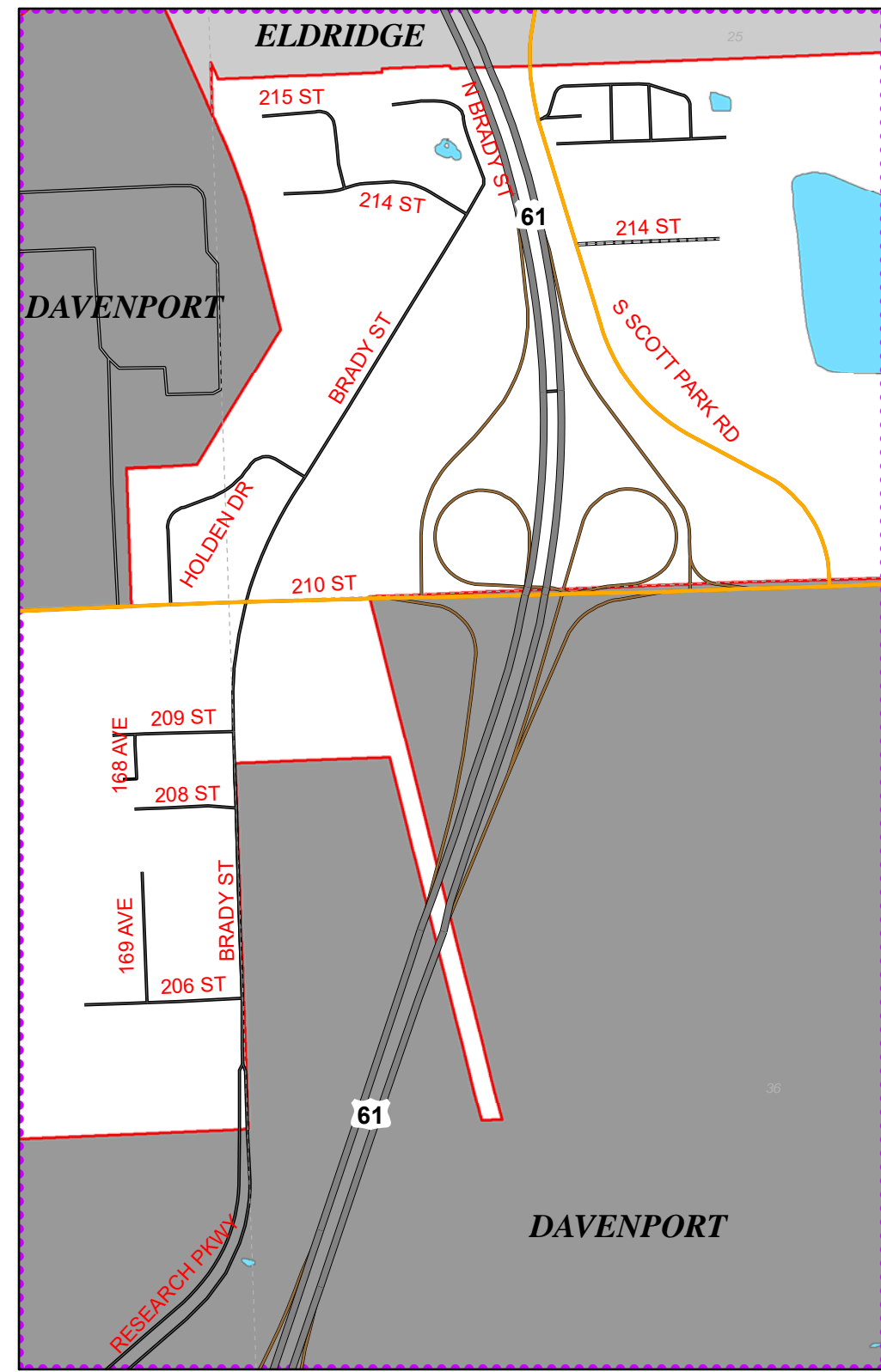


Map Insets on Reverse

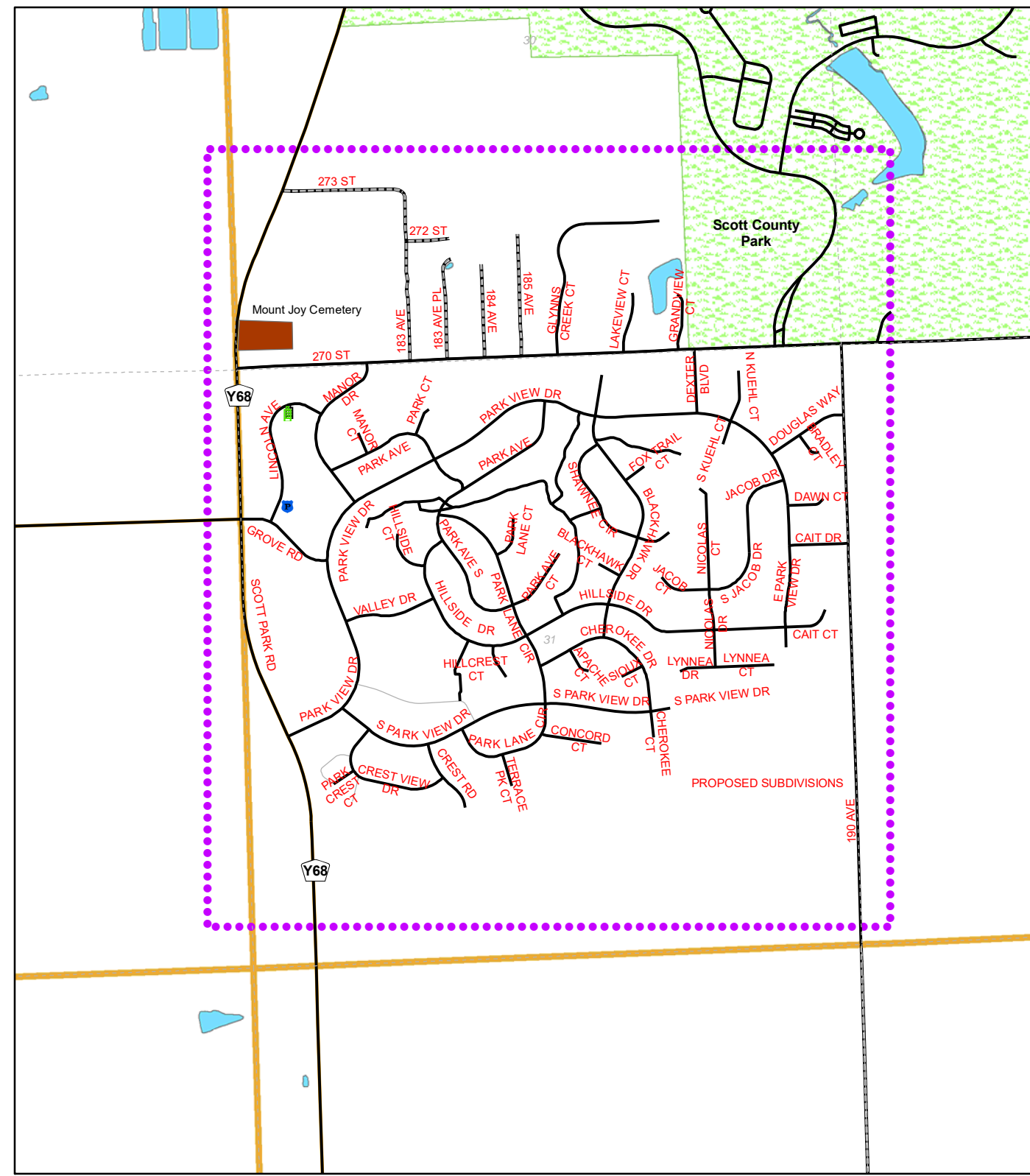
Scott County, Iowa Rural Address Map

Map Inset Views

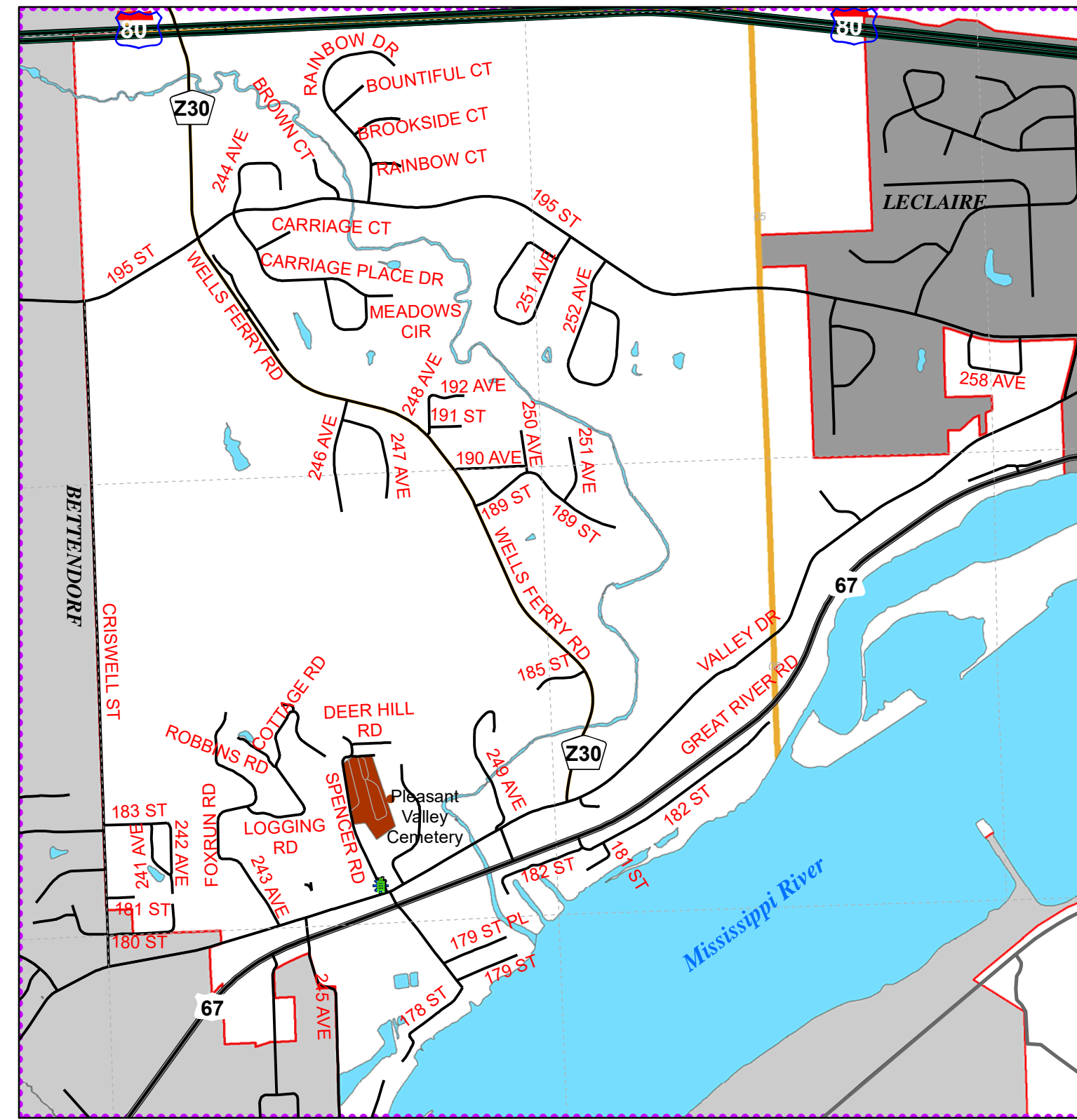
Inset A Mt. Joy



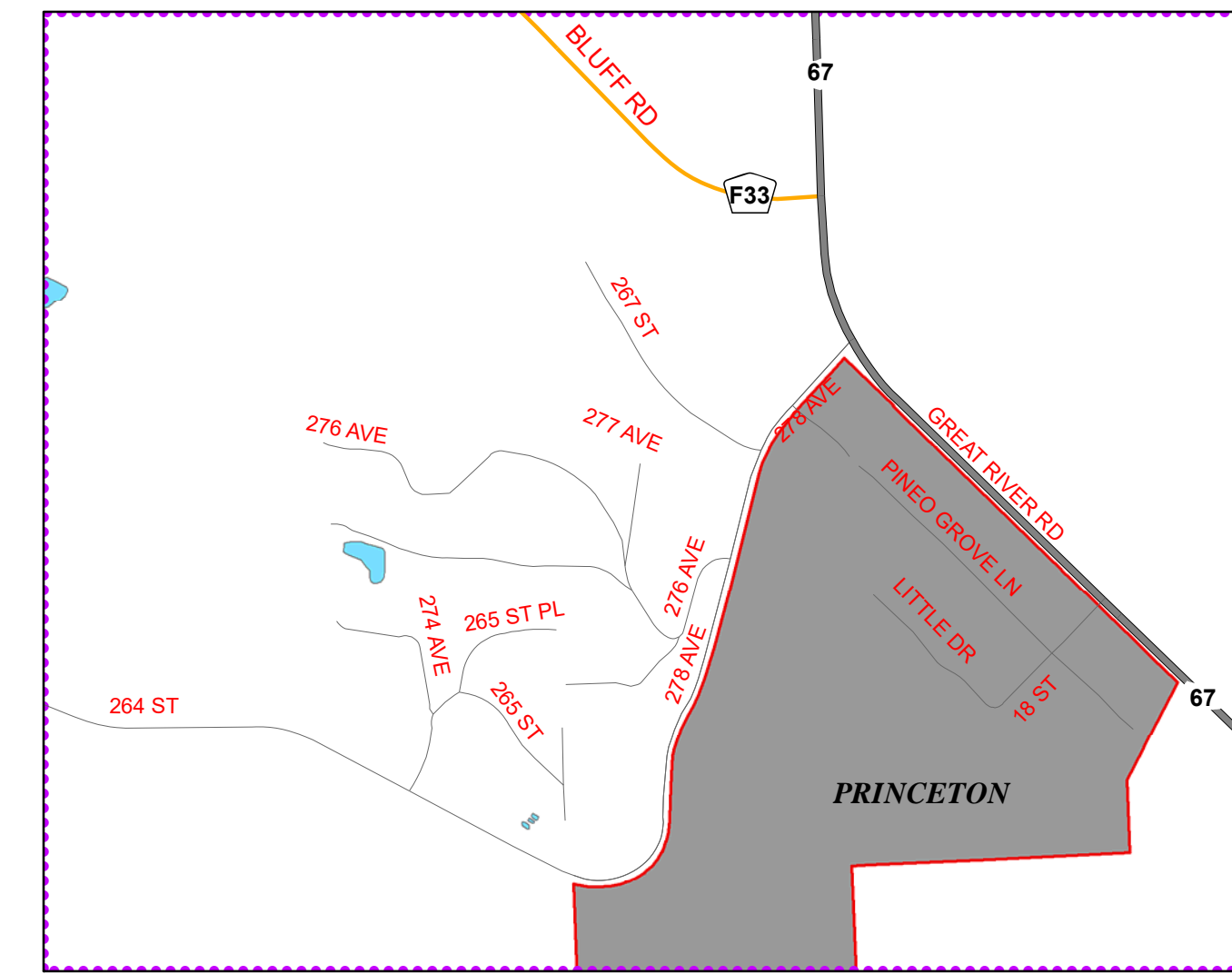
Inset B Park View



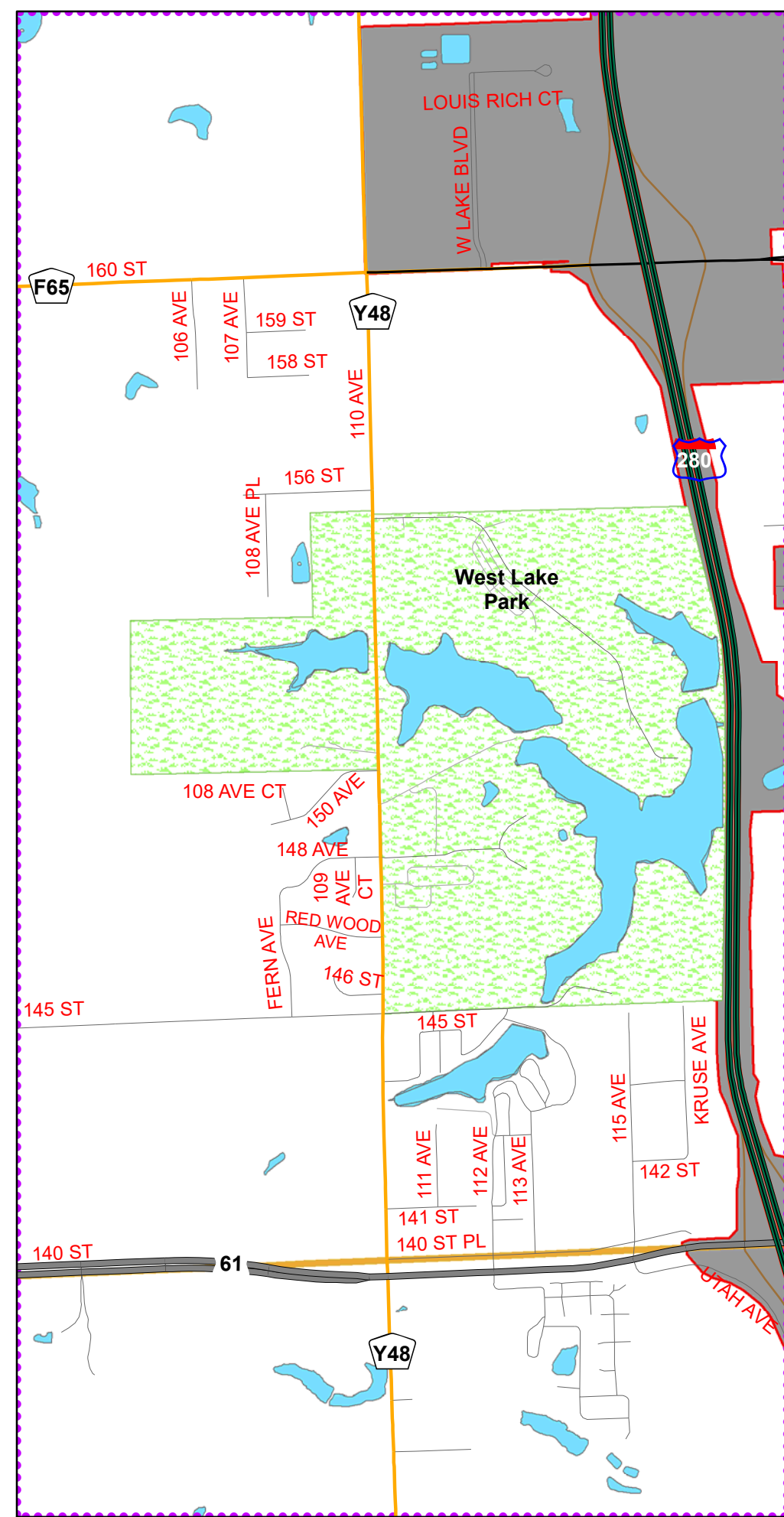
Inset C Pleasant Valley



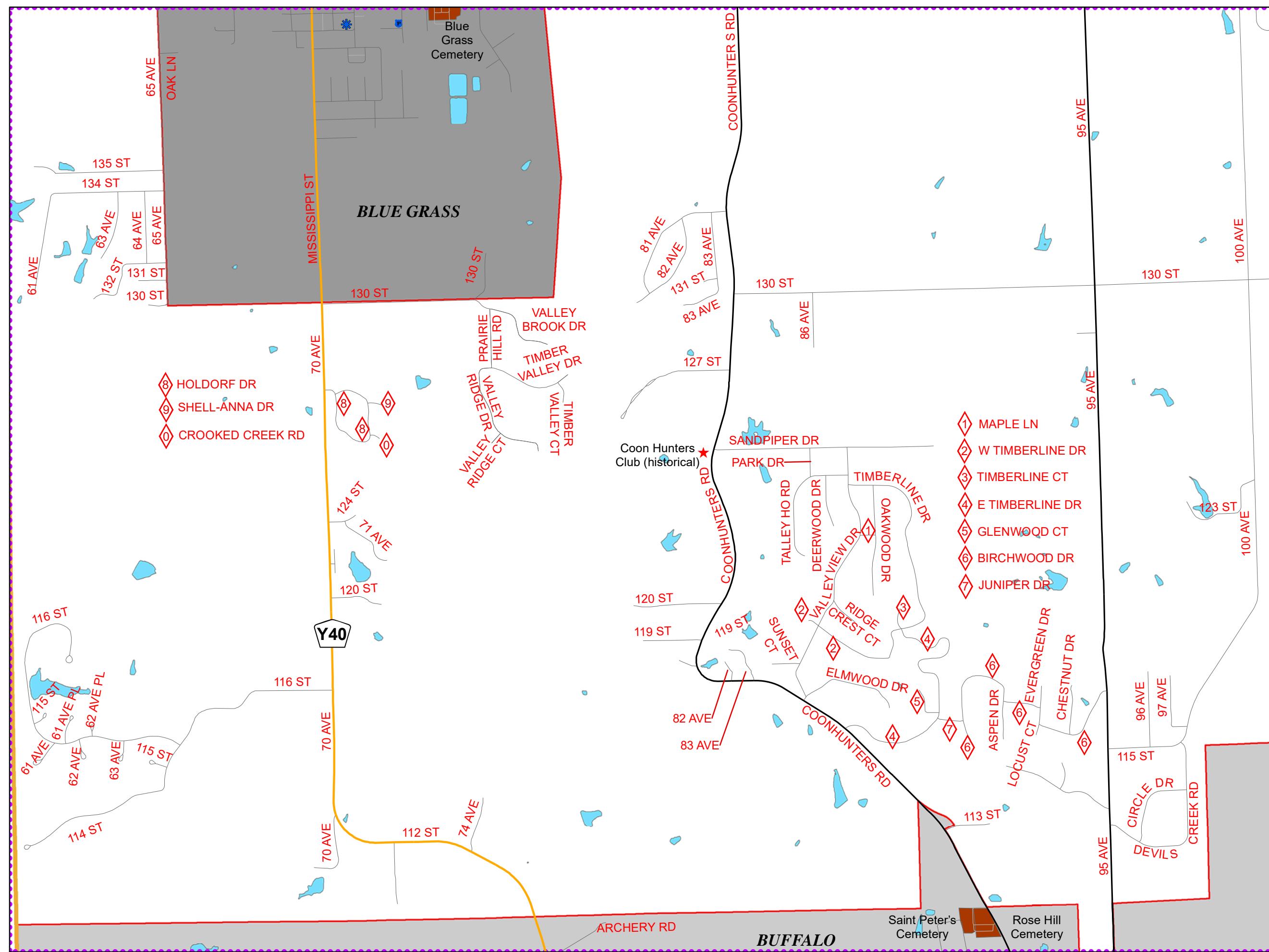
Inset D Centennial Oaks



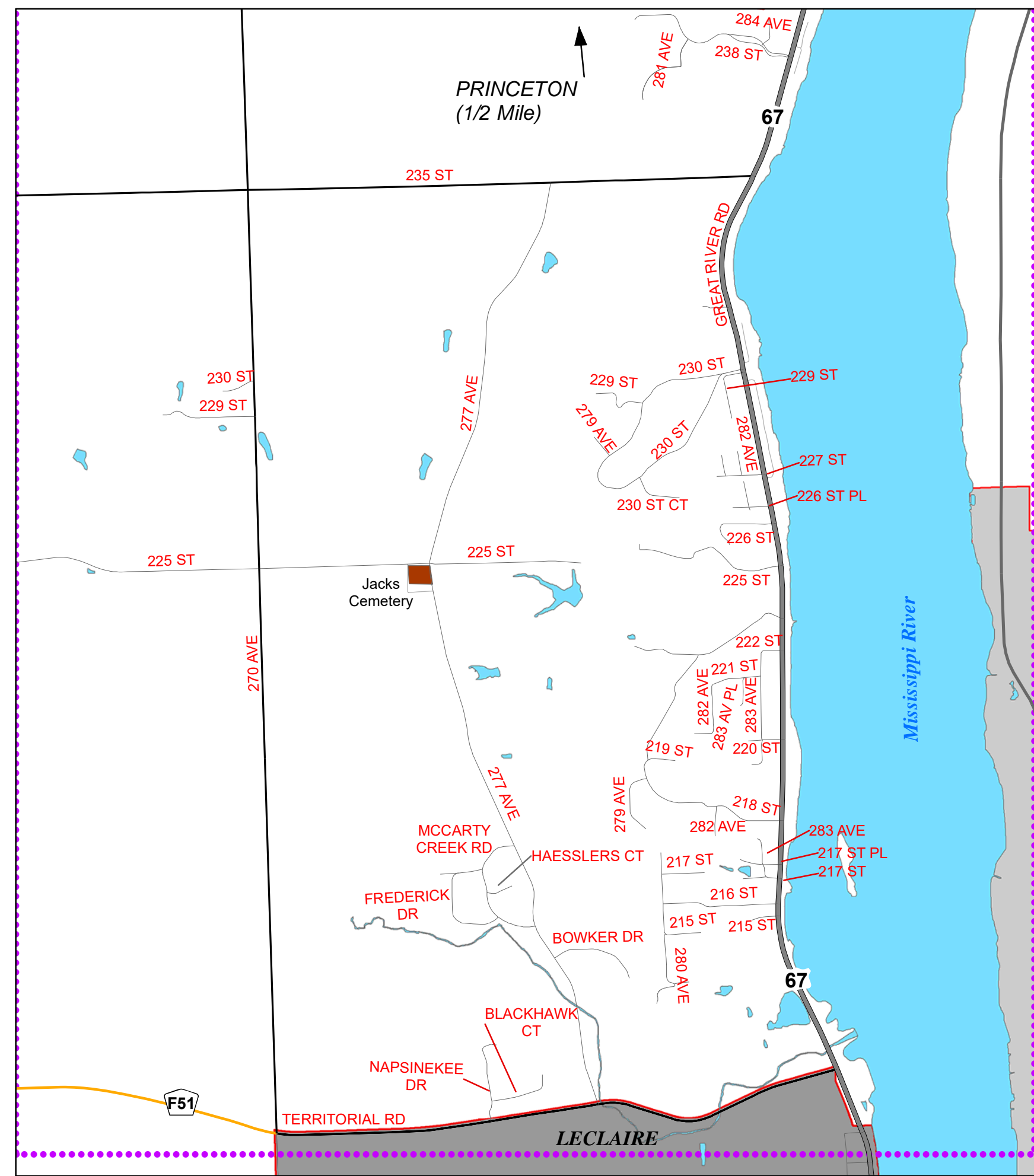
Inset E West Lake



Inset F Buffalo Township



Inset G LeClaire Township



Legend

- | | | | | | | | | | | |
|-------------------|-------------------|---------------|--------------------|--------------|--------------------|------------------------|-----------|----------------|------------|-------|
| Hospitals | City Halls | Fire Stations | Police Departments | Post Offices | Points of Interest | Post Secondary Schools | Libraries | Lakes & Rivers | Cemeteries | Parks |
| All Roads | | | | | | | | | | |
| Road Class | | | | | | | | | | |
| | Interstate | | | | | | | | | |
| | U.S. Highway | | | | | | | | | |
| | State Highway | | | | | | | | | |
| | County Route | | | | | | | | | |
| | Major Road | | | | | | | | | |
| | Local Road | | | | | | | | | |
| | Ramp | | | | | | | | | |
| | Alley/Access Road | | | | | | | | | |
| | Bike Trail | | | | | | | | | |