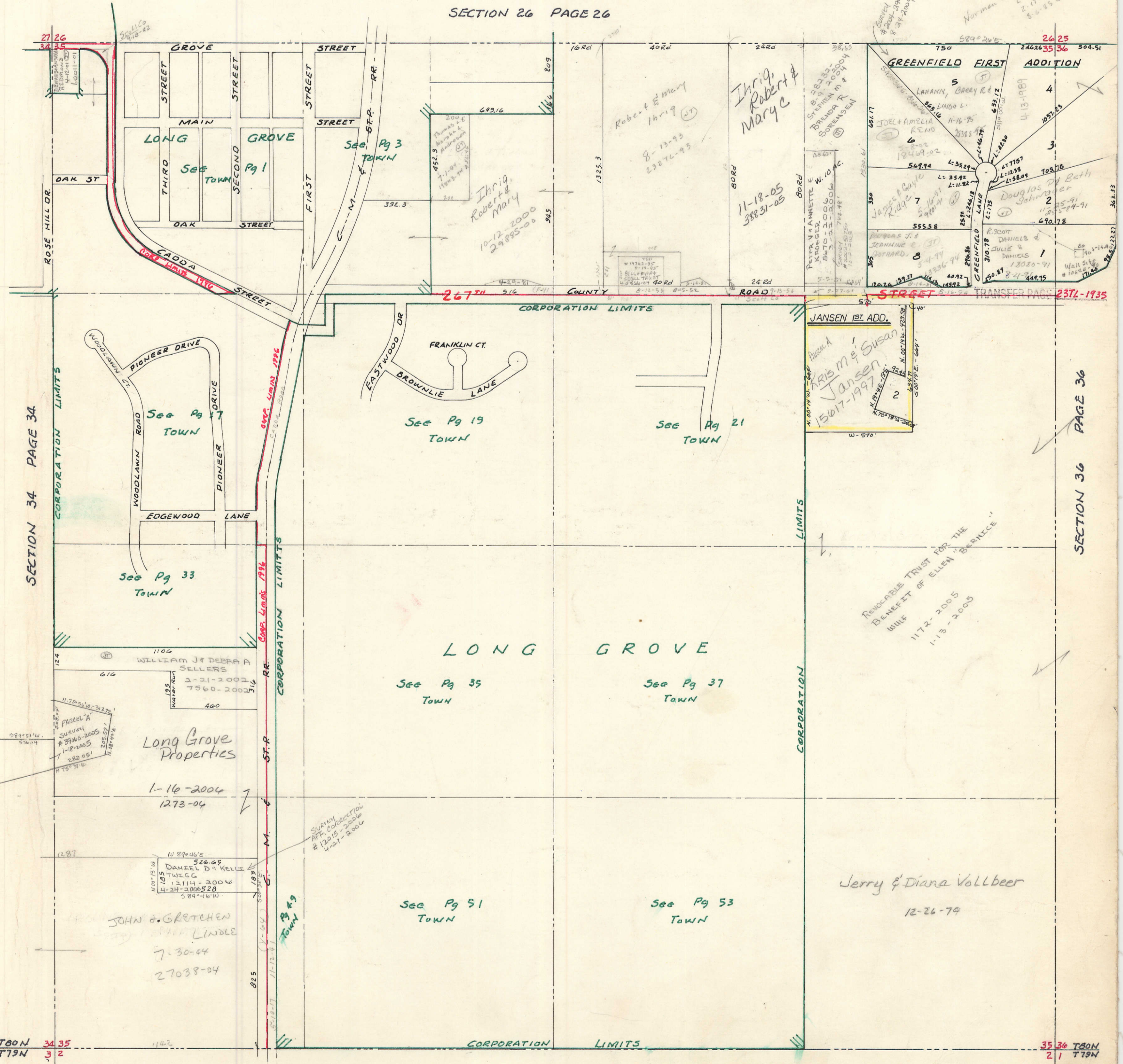


SECTION 35  
TOWNSHIP 80 NORTH, RANGE 3 EAST  
OF THE FIFTH PRINCIPAL MERIDIAN  
WINFIELD TOWNSHIP  
SCOTT COUNTY, IOWA

SCALE: 1 inch = 330 feet

TRANSFER PAGE 81ds-495

SECTION 26 PAGE 26



12-23-02  
5/11/12-12

Norman J. Standt  
2-1-84  
2-17-84 020  
8-6-85 020

JANSEN 1ST ADD.  
Kris M & Susan  
Jansen  
15017-1997

REVOCALE TRUST FOR THE  
BENEFIT OF ELLEN BERNICE  
WULF  
11/2-2005  
1-15-2005

SECTION 34 PAGE 34

SECTION 36 PAGE 36

T80N 34 35  
T79N 3 2

35 36 T80N  
2 1 T79N

SHERIDAN TOWNSHIP