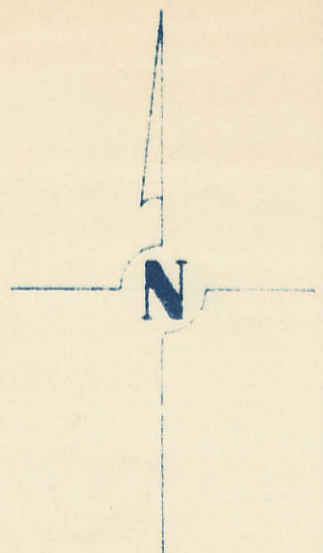


SECTION 18
TOWNSHIP 80 NORTH, RANGE 3 EAST,
5TH PRINCIPAL MERIDIAN
WINFIELD TOWNSHIP
SCOTT COUNTY, IOWA

TRANSFER PAGE 478 ^{81ds}

SCALE: 1 INCH = 330 FEET

SECTION 7 PAGE 7

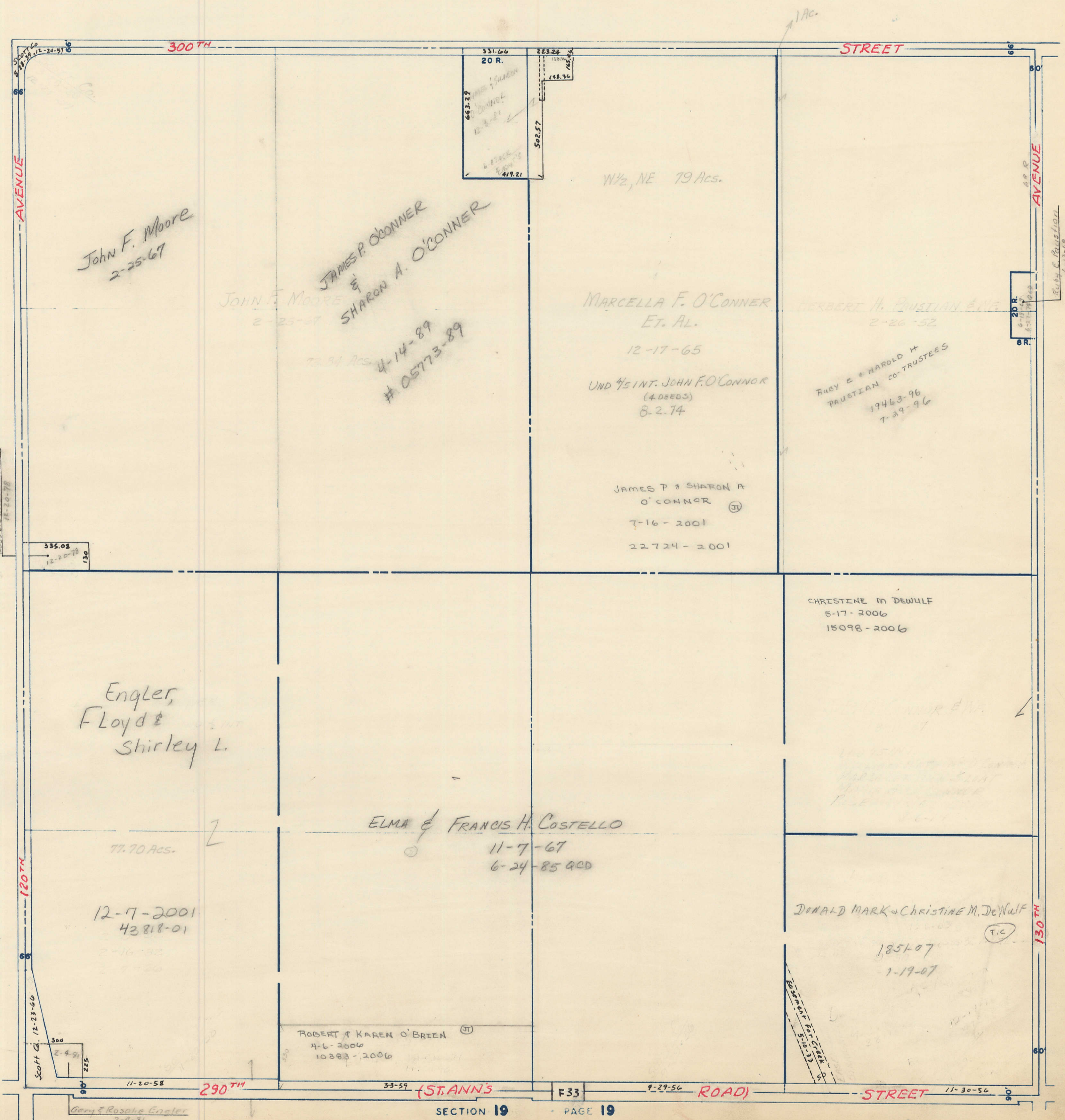


PAGE ALLENS GROVE TWP

SECTION 13

PAGE 17

SECTION 17



John F. Moore
2-25-67

JOHN F. MOORE
2-25-67
JAMES P. O'CONNOR
&
SHARON A. O'CONNOR

72.94 Acs
4-14-89
05773-89

MARCELLA F. O'CONNOR
ET. AL.

12-17-65

UND 1/2 INT. JOHN F. O'CONNOR
(4 DEEDS)
8-2-74

JAMES P & SHARON A
O'CONNOR

7-16-2001

22724-2001

BERBERE H. PRUSTIAN & NE
2-26-52

RUBY E & HAROLD H
PRUSTIAN CO-TRUSTEES
19463-96
7-29-96

CHRISTINE M DEWULF
5-17-2006
15098-2006

Engler,
Floyd &
Shirley L.

77.70 Acs.

12-7-2001
43818-01

ELMA & FRANCIS H. COSTELLO

11-7-67

6-24-85 QCD

ROBERT & KAREN O'BRIEN
4-6-2006
10283-2006

DONALD MARK & CHRISTINE M. DeWulf

1851-07

1-19-07

Gary & Rosale Engler
2-4-81

SECTION 19

PAGE 19

(STANNIS

F33

ROAD)

STREET