

SECTION 4

Township 79-North; Range 3
EAST OF THE FIFTH PRINCIPAL MERIDIAN

SCOTT COUNTY, IOWA
SHERIDAN TOWNSHIP

NORTH

SECTION 33 WINFIELD TOWNSHIP

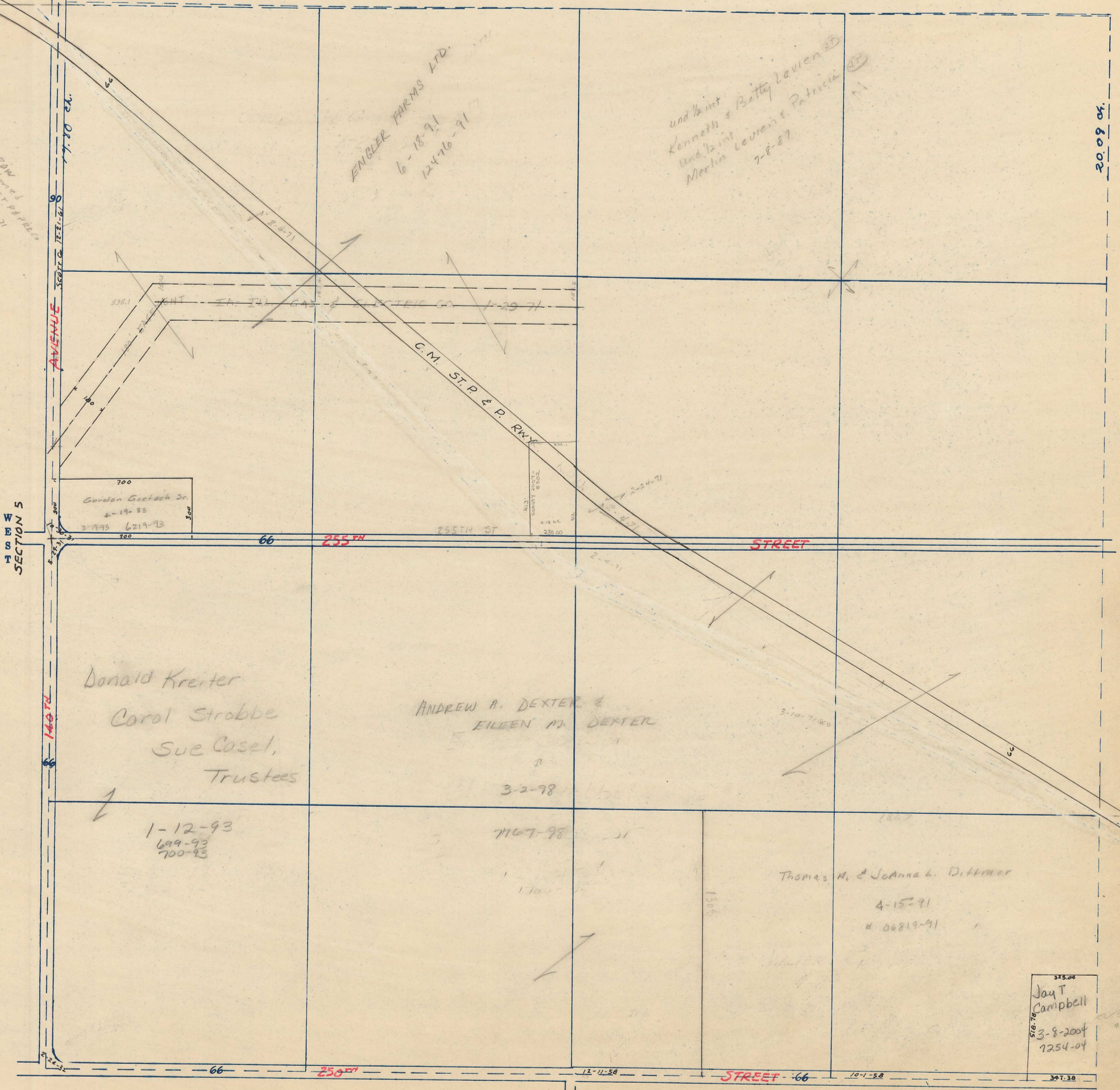
SCALE IN CHAINS



SCALE IN FEET



Transfer Page 8Lds-428



U.S. EDW
Abandoned
C.M. ST. P. & P. Rwy
2-24-71

ENGLER FARMS LTD.
6-18-91
12476-91

und 1/2 int
Kenneth & Betty Levens
und 1/2 int
Merlin Levens & Patricia
7-8-87

Gordon Gochsch Jr.
4-19-88
3-19-93 6219-93

Donald Kreiter
Carol Strobbe
Sue Casel,
Trustees

ANDREW A. DEXTER &
EILEEN M. DEXTER

1-12-93
699-93
700-93

1167-98

Thomas M. & Joanna L. Dittmer
4-15-91
06219-91

Jay T
Campbell
3-8-2004
7254-04

SOUTH
SECTION 9

SECTION 5

SECTION 3
EAST