

SECTION
33

SCALE IN CHAINS



Township 79-North; Range 3

EAST OF THE FIFTH PRINCIPAL MERIDIAN

SCOTT COUNTY, IOWA

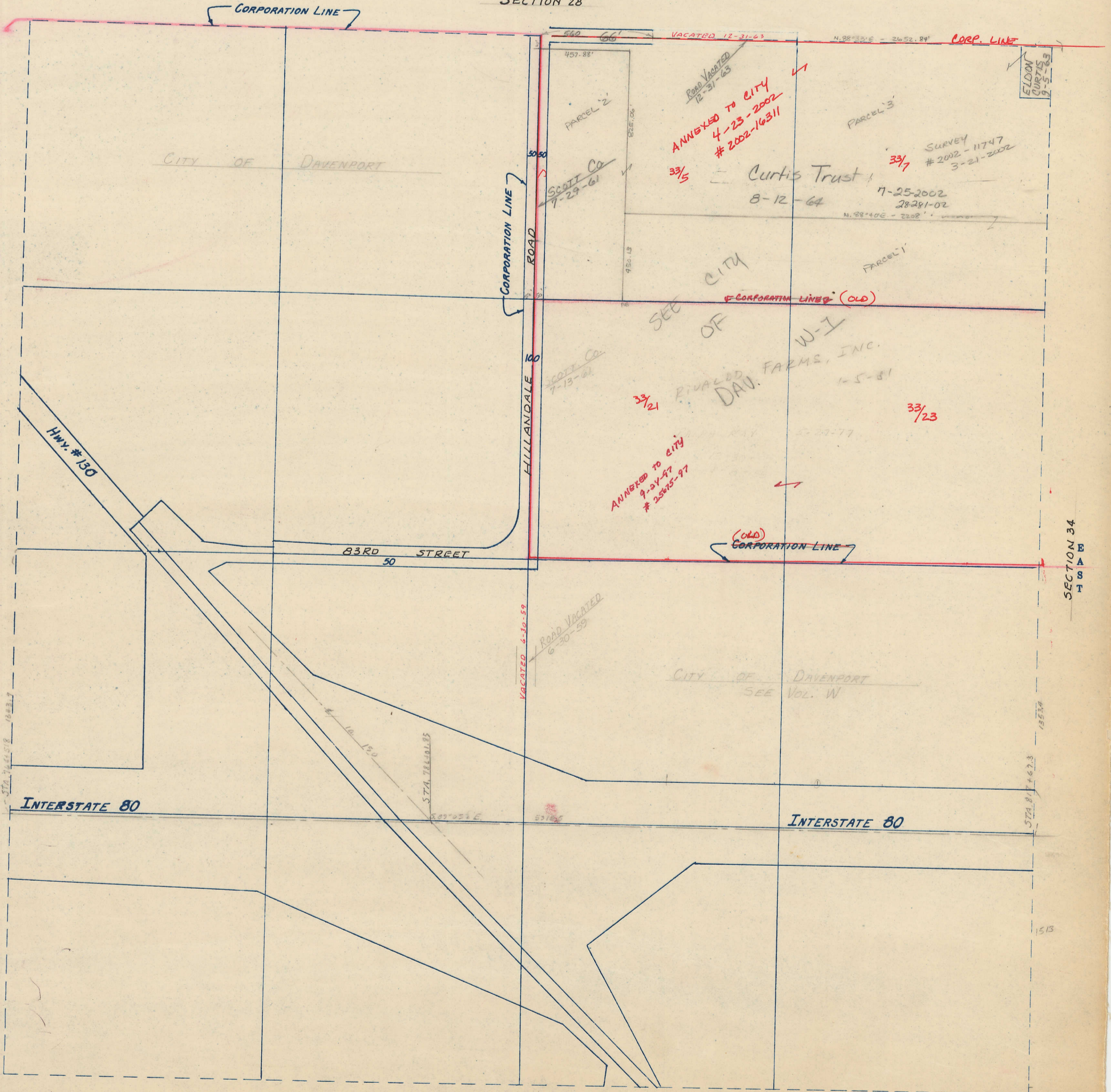
SHERIDAN TOWNSHIP

SCALE IN FEET



Transfer Page 865-457

NORTH
SECTION 28



CITY OF DAVENPORT

PARCEL 2
457.88'
SCOTT Co
7-29-61
ANNEXED TO CITY
4-23-2002
2002-16311
33/5
Curtis Trust
8-12-64
7-25-2002
28291-02
SURVEY # 2002-11747
3-21-2002
33/7
N. 88° 32' E - 2652.84'
CORP. LINE
ELDON CURTIS
9-5-63

SEE CITY OF
RIVALD FARM, INC.
W-I
DAV.
1-5-81
ANNEXED TO CITY
9-24-97
25025-97
33/21
33/23
CORPORATION LINE (OLD)

CITY OF DAVENPORT
SEE VOL. W

SECTION 32

SECTION 34

SECTION 4-78-3 DAVENPORT
SOUTH