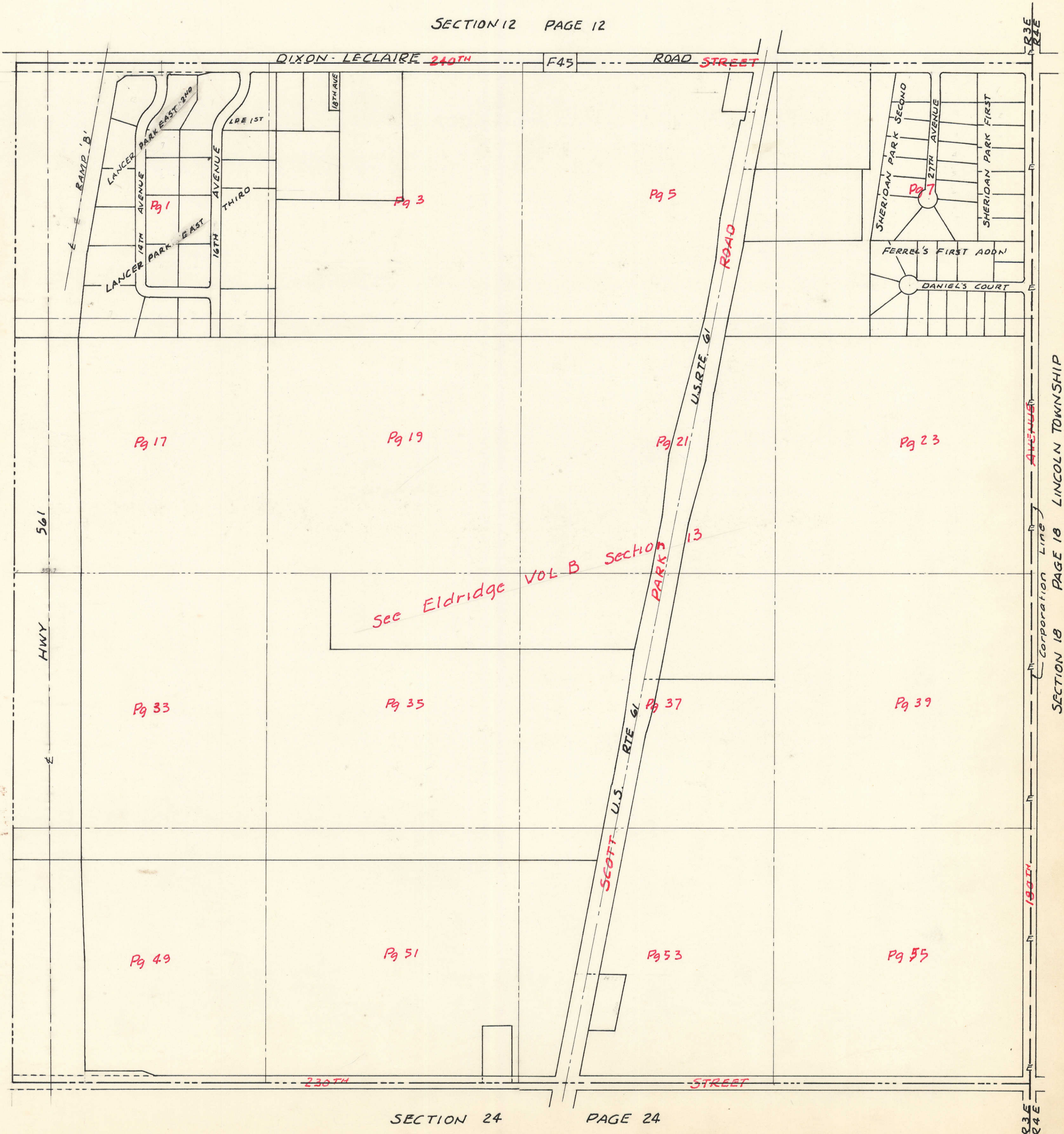


SECTION 13
TOWNSHIP 79 NORTH, RANGE 3 EAST
OF THE FIFTH PRINCIPAL MERIDIAN
SCOTT COUNTY, IOWA
SHERIDAN TOWNSHIP

SCALE: 1 inch = 330 feet

TRANSFER PAGE 81ds-437

SECTION 12 PAGE 12



SECTION 14 PAGE 14

SECTION 18 LINCOLN TOWNSHIP

SECTION 24

PAGE 24

R3E
R4E