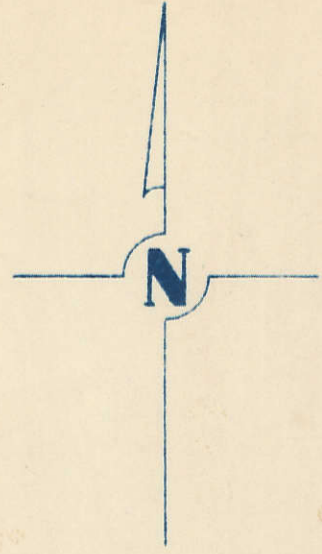


SECTION 19  
TOWNSHIP 80 NORTH, RANGE 5 EAST,  
5<sup>TH</sup> PRINCIPAL MERIDIAN  
PRINCETON TOWNSHIP  
SCOTT COUNTY, IOWA

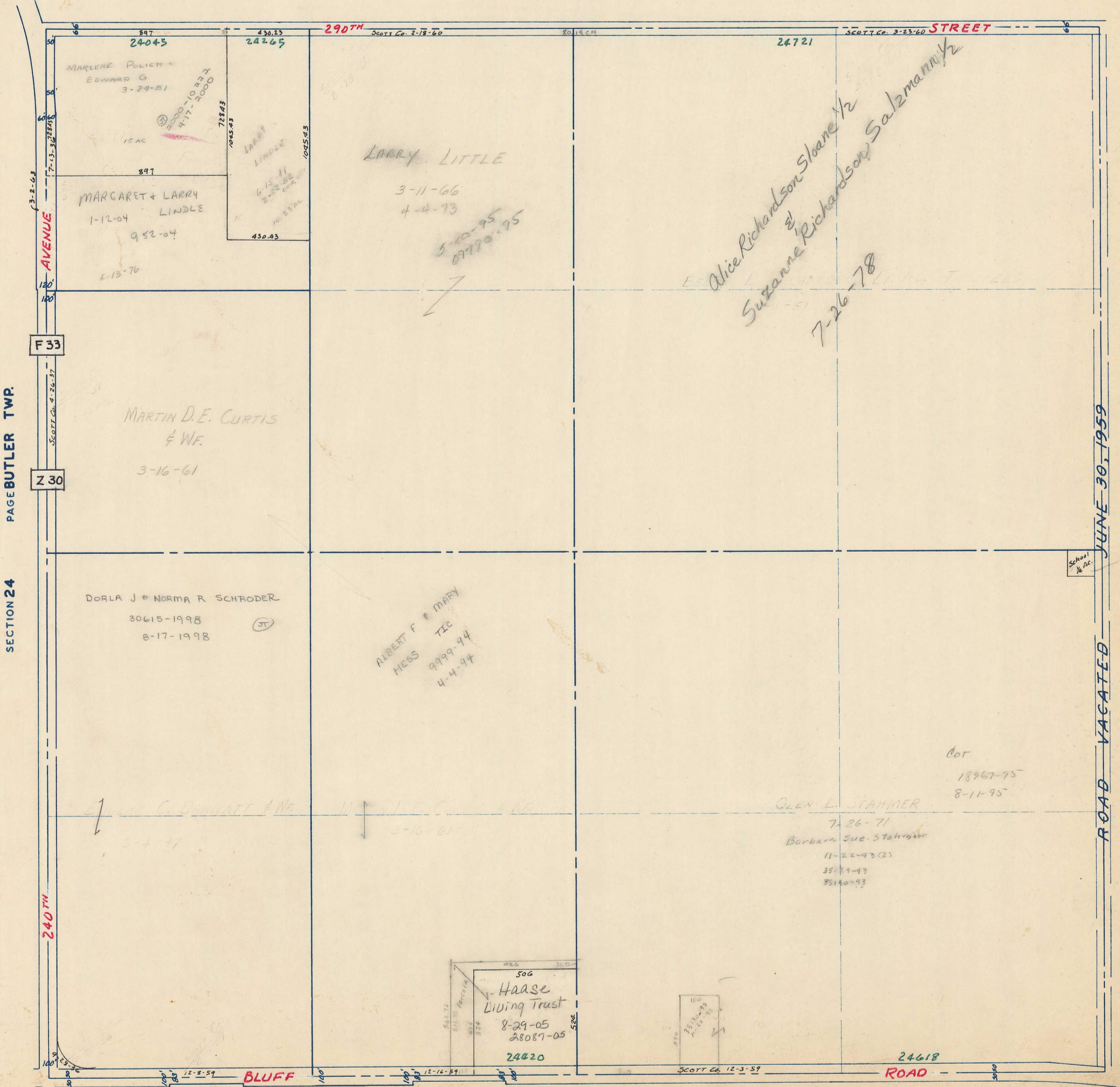
TRANSFER PAGE 395



SCALE: 1 INCH = 330 FEET

SECTION 18

PAGE 18



PAGE BUTLER TWP.

SECTION 24

JUNE 30, 1959

ROAD VACATED

SECTION 20

PAGE 20

See N Del. 346

SECTION 30

PAGE 30