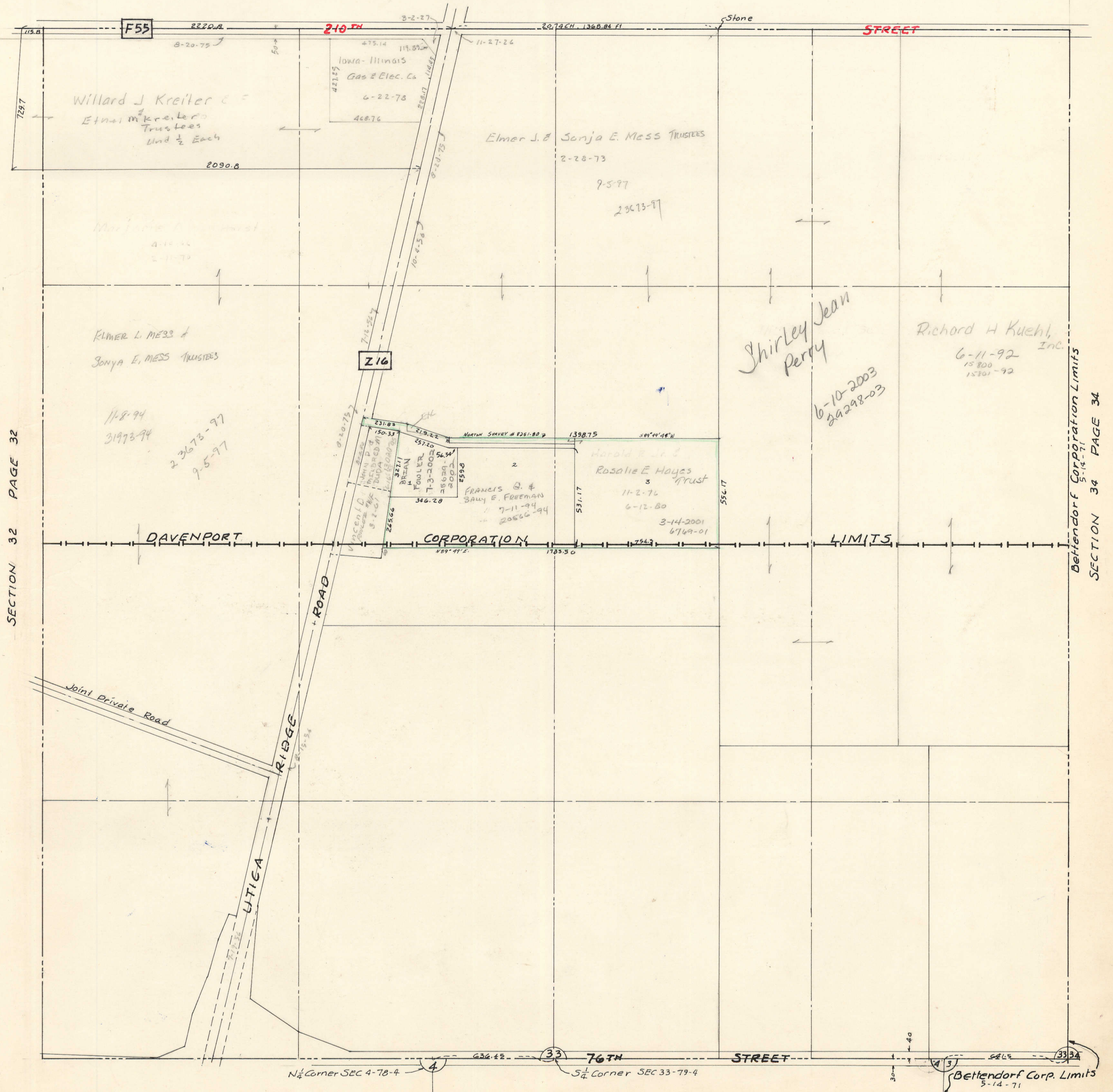


SECTION 33
TOWNSHIP 79 NORTH, RANGE 4 EAST
OF THE FIFTH PRINCIPAL MERIDIAN
SCOTT COUNTY, IOWA
LINCOLN TOWNSHIP

SCALE: 1 inch = 330 feet

TRANSFER PAGE 74s-349

SECTION 28 PAGE 28



SECTION 32 PAGE 32

Bettendorf Corporation Limits
5-14-71
SECTION 34 PAGE 34

SECTION 4 PAGE 4

N 1/4 Corner SEC 4-78-4

S 1/4 Corner SEC 33-79-4

Bettendorf Corp. Limits
5-14-71