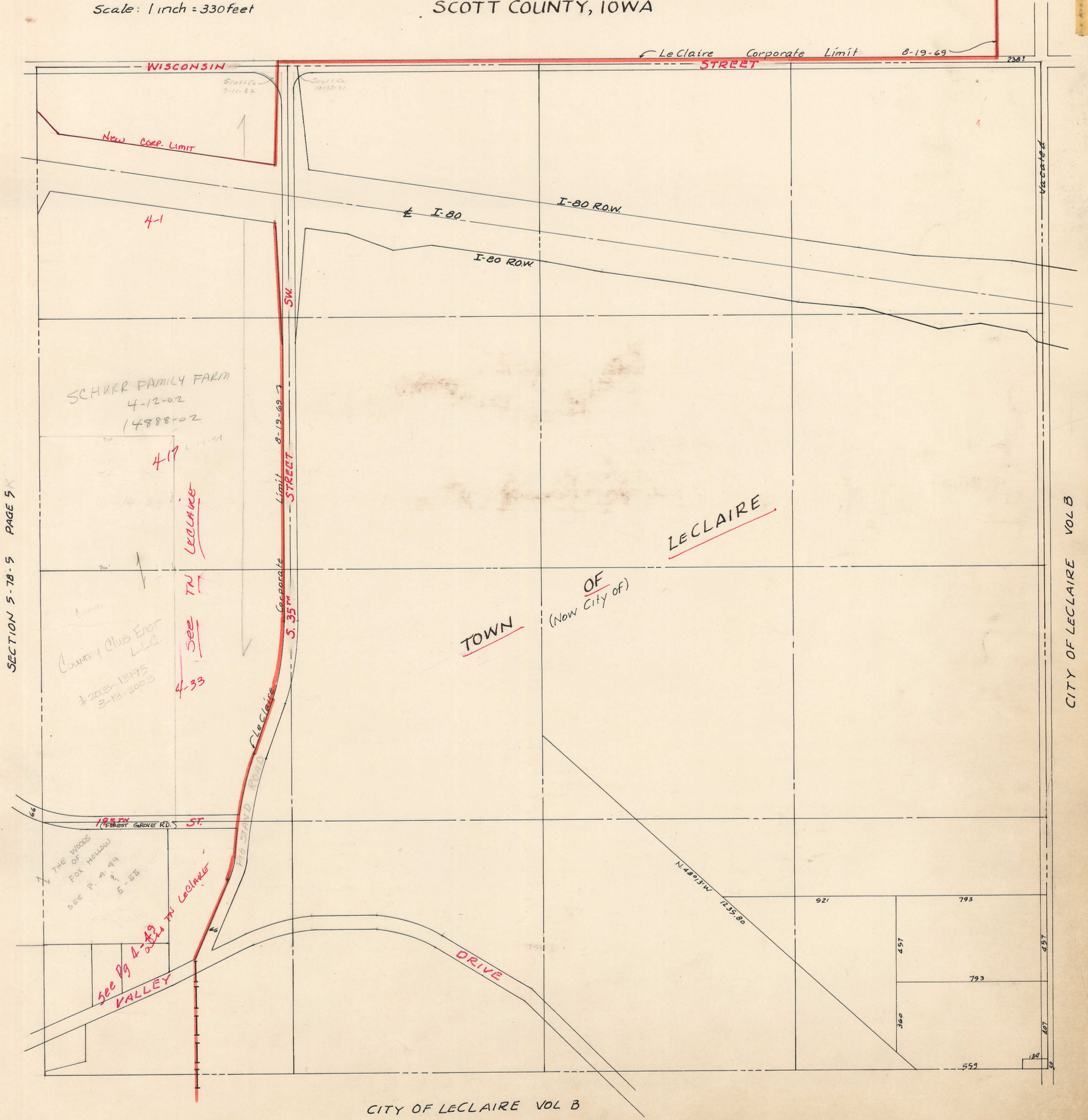


SECTION 4
TOWNSHIP 78 NORTH, RANGE 5 EAST
OF THE 5TH PRINCIPAL MERIDIAN
LE CLAIRE TOWNSHIP
SCOTT COUNTY, IOWA

Scale: 1 inch = 330 feet

Transfer Page 7lds. 26A



SECTION 5-78-5 PAGE 5 K

CITY OF LECLAIRE VOL B

CITY OF LECLAIRE VOL B