

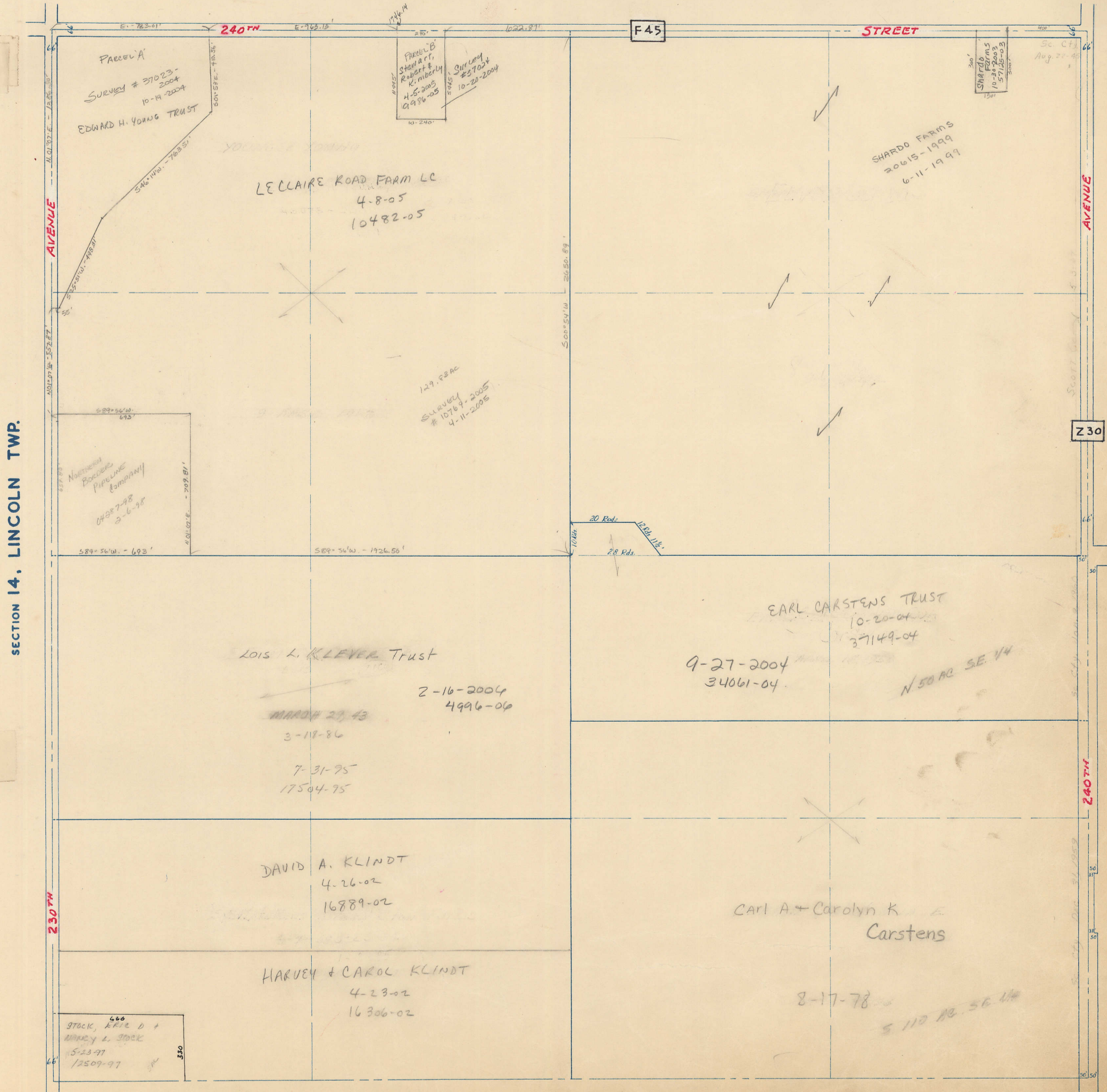
SECTION 13
TOWNSHIP 79 NORTH, RANGE 4 EAST,
5TH PRINCIPAL MERIDIAN
LE CLAIRE TOWNSHIP
SCOTT COUNTY, IOWA

765-
TRANSFER PAGE 258

SCALE: 1 INCH = 330 FEET

SECTION 12, PRINCETON TWP.

Sec. 13-79-4A



SECTION 14, LINCOLN TWP.

SECTION 18-79-5 PAGE 18