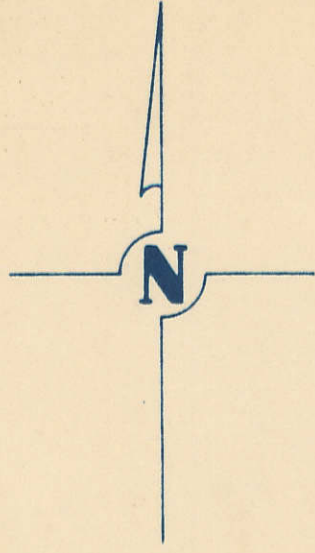


SECTION 24  
TOWNSHIP 79 NORTH, RANGE 4 EAST,  
5<sup>TH</sup> PRINCIPAL MERIDIAN  
LE CLAIRE TOWNSHIP  
SCOTT COUNTY, IOWA

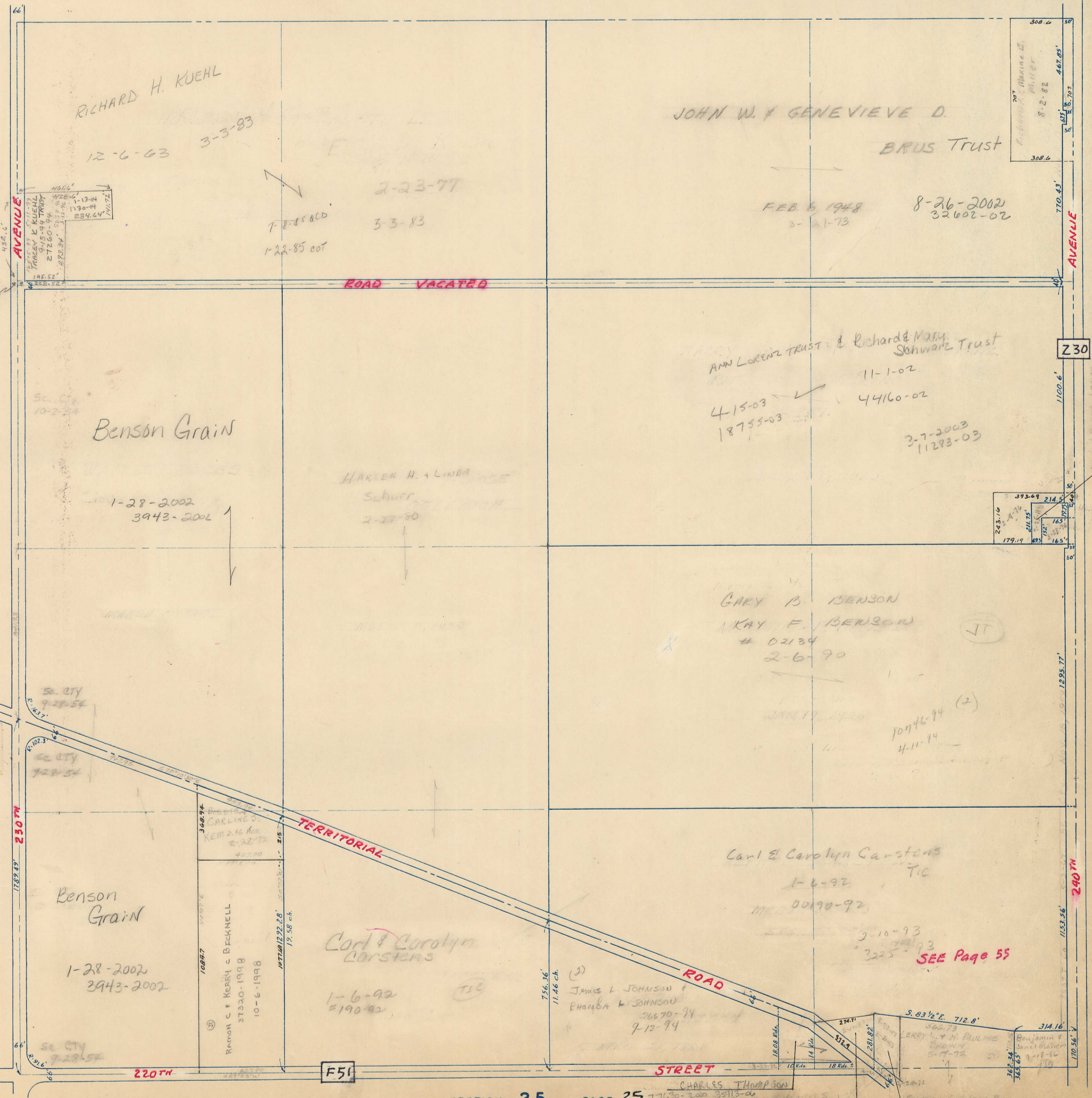


SCALE: 1 INCH = 330 FEET

SECTION 13 PAGE 13

71ds-  
TRANSFER PAGE 259

SECTION 23, LINCOLN TWP.



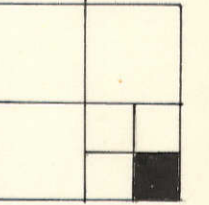
SECTION 19-79-5 PAGE 19

SECTION 25 PAGE 25

CHARLES THOMPSON  
27630-2000 35113-06

SE 1/4 SE 1/4 SEC 24-79-4  
LECLAIRE TOWNSHIP  
SCALE: 1 in. = 100 ft.

SECTION 24 PAGE 24  
NE 1/4 SE 1/4



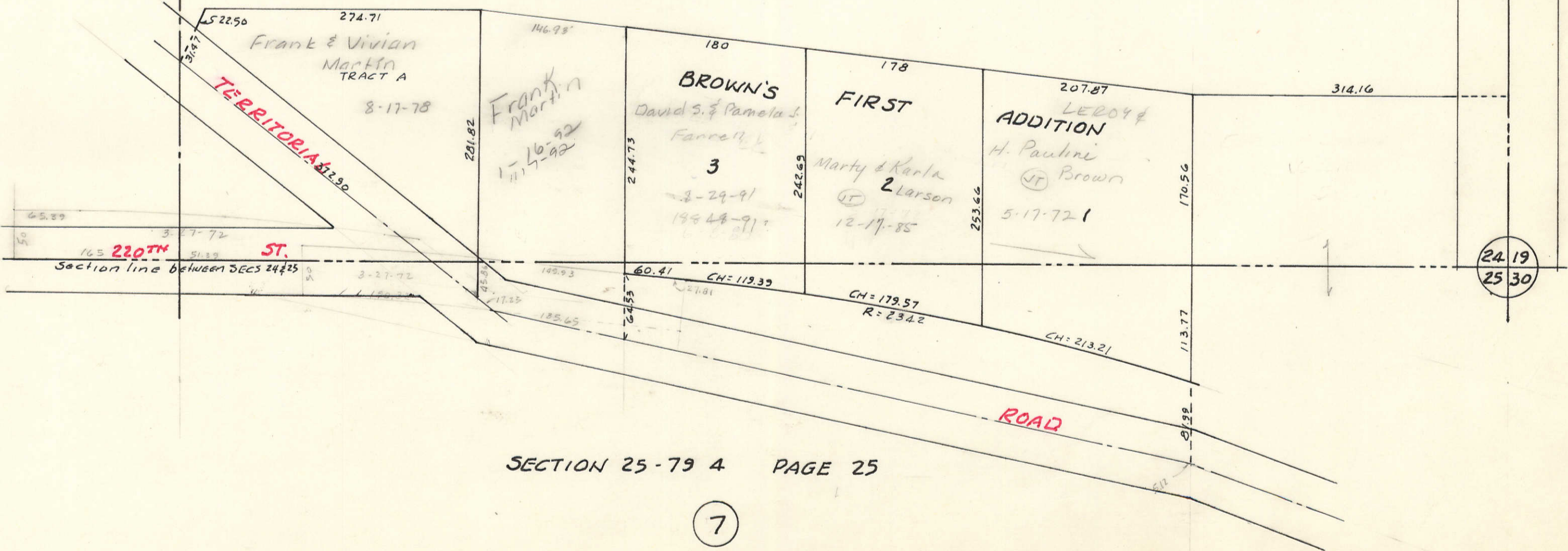
SECTION 24 PAGE 24  
SW 1/4 SE 1/4

Carl & Carolyn Carstens  
TIC  
1-6-92  
00190-92

AVENUE  
Section line between SEC 24-79-4 & SEC 19-79-5

SECTION 19-79-5 PAGE 19

240<sup>TH</sup>



Section line between SECS 24 & 25

ROAD