

NW 1/4, NW 1/4 SEC. 9-78-5
TOWN OF LE CLAIRE
SCALE: 1" = 100'

S. SERGEANT'S
HILLTOP ADD.

SERGEANT'S
RIVER VIEW

SEC. 4

(49)

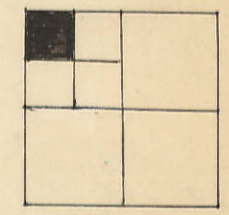
SERGEANT'S THIRD RIVERVIEW ADD.

LIMITS
CORPORATE

CODY ROAD
U.S. HWY. 67

GOVT. LOT 2

(3)



DAV. LE CLAIRE ROAD

BERTRAM SUEB.D.

D. R. & N.W. RR.

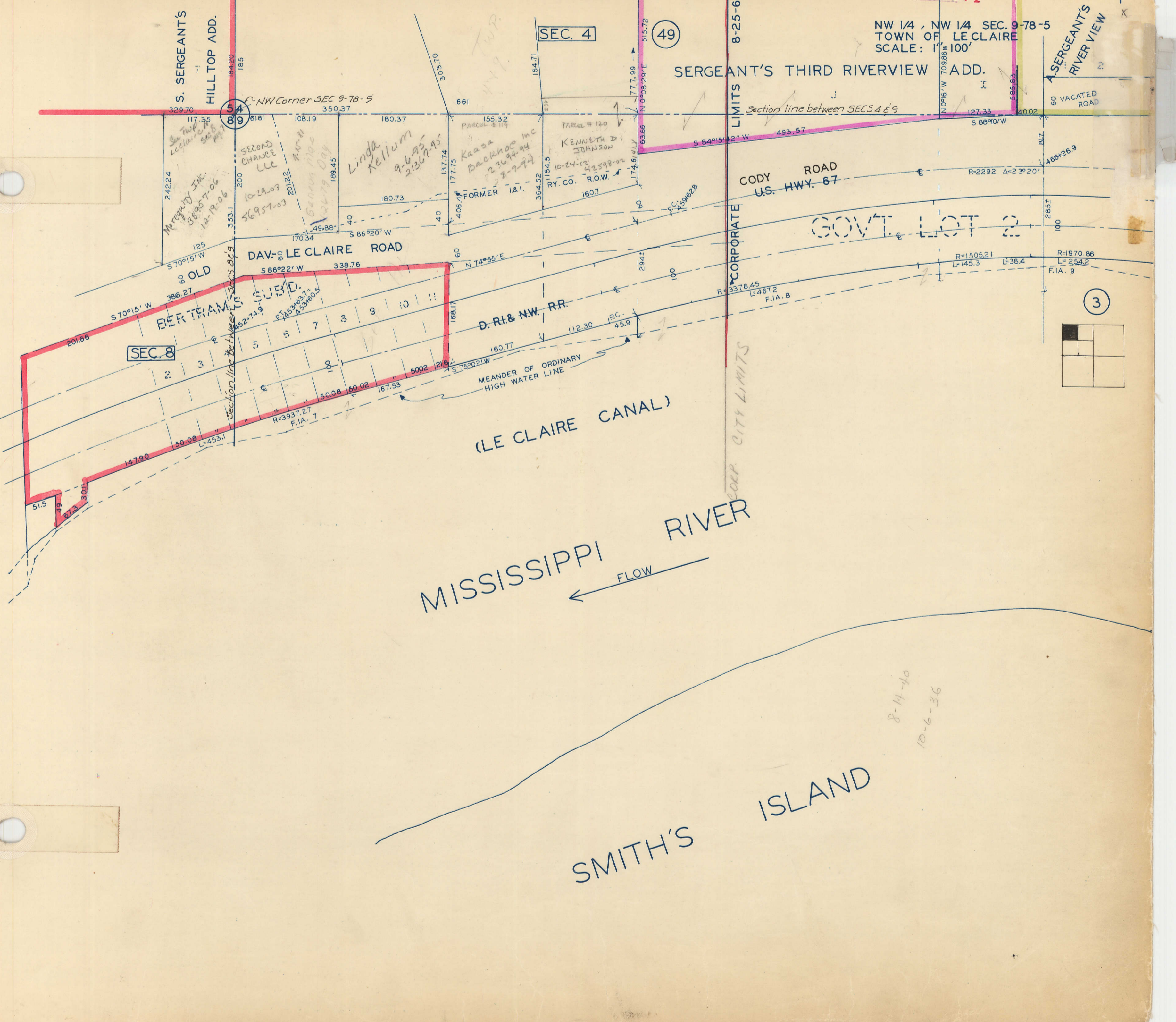
MEANDER OF ORDINARY
HIGH WATER LINE

(LE CLAIRE CANAL)

MISSISSIPPI RIVER
SMITH'S ISLAND

FLOW

8-14-40
10-6-36



SEC. 4 (51)

NE 1/4, NW 1/4 SEC. 9-78-5
TOWN OF LE CLAIRE
SCALE: 1" = 100'

SERGEANT'S 3RD RIVER VIEW ADD.

A. SERGEANT'S RIVER VIEW ADD.

2ND PLAT, A. SERGEANT'S

RIVER VIEW

GOVT LOT 2

US. HWY. 67

CODY ROAD

US. HWY. 67

D. RI. & NW RR

(LE CLAIRE CANAL)

MISSISSIPPI RIVER
FLOW

SMITH'S ISLAND

R=1505.21
F.I.A. B L=145.3 L=38.4

R=1970.86
L=254.2

R=15954.04
L=164.3
F.I.A. 9 OWNER KK?

N 81°40' W 219.1

Schadler Joseph & Robin Ann

OLD WEST RIVER

GLEN BAKER'S SUBD.
TRANSFER PAGE 804 TL

Gould David & Phyllis

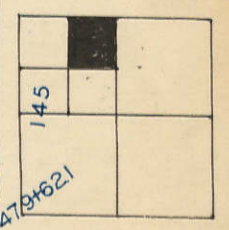
Margaret A. McNamara Trust

Kaminski Trust

SEE PAGE 5

SURVEY 4266-2005 2-18-2005

8-14-40
10-6-36



493.57
127.33
S 88°10' W

484.5

81.7

L=933.3
R=2292

81.7

81.7

81.7

81.7

81.7

81.7

81.7

81.7

81.7

81.7

81.7

81.7

81.7

81.7

81.7

81.7

81.7

81.7

81.7

81.7

81.7

81.7

81.7

81.7

81.7

81.7

81.7

Section line between SECS 4 & 9

UNDERPASS

MEANDER OF ORDINARY HIGH WATER LINE

MEANDER OF ORDINARY HIGH WATER LINE

MEANDER OF ORDINARY HIGH WATER LINE

MEANDER OF ORDINARY HIGH WATER LINE

MEANDER OF ORDINARY HIGH WATER LINE

MEANDER OF ORDINARY HIGH WATER LINE

MEANDER OF ORDINARY HIGH WATER LINE

MEANDER OF ORDINARY HIGH WATER LINE

MEANDER OF ORDINARY HIGH WATER LINE

MEANDER OF ORDINARY HIGH WATER LINE

MEANDER OF ORDINARY HIGH WATER LINE

MEANDER OF ORDINARY HIGH WATER LINE

MEANDER OF ORDINARY HIGH WATER LINE

MEANDER OF ORDINARY HIGH WATER LINE

MEANDER OF ORDINARY HIGH WATER LINE

MEANDER OF ORDINARY HIGH WATER LINE

MEANDER OF ORDINARY HIGH WATER LINE

MEANDER OF ORDINARY HIGH WATER LINE

MEANDER OF ORDINARY HIGH WATER LINE

MEANDER OF ORDINARY HIGH WATER LINE

MEANDER OF ORDINARY HIGH WATER LINE

MEANDER OF ORDINARY HIGH WATER LINE

MEANDER OF ORDINARY HIGH WATER LINE

MEANDER OF ORDINARY HIGH WATER LINE

MEANDER OF ORDINARY HIGH WATER LINE

MEANDER OF ORDINARY HIGH WATER LINE

MEANDER OF ORDINARY HIGH WATER LINE

MEANDER OF ORDINARY HIGH WATER LINE

NW 1/4 NE 1/4 SEC. 9-78-5
CITY OF LECLAIRE

SCALE: 1 IN. = 100 FT.

5

SEC 4
TRANSFER PAGE 25-2256

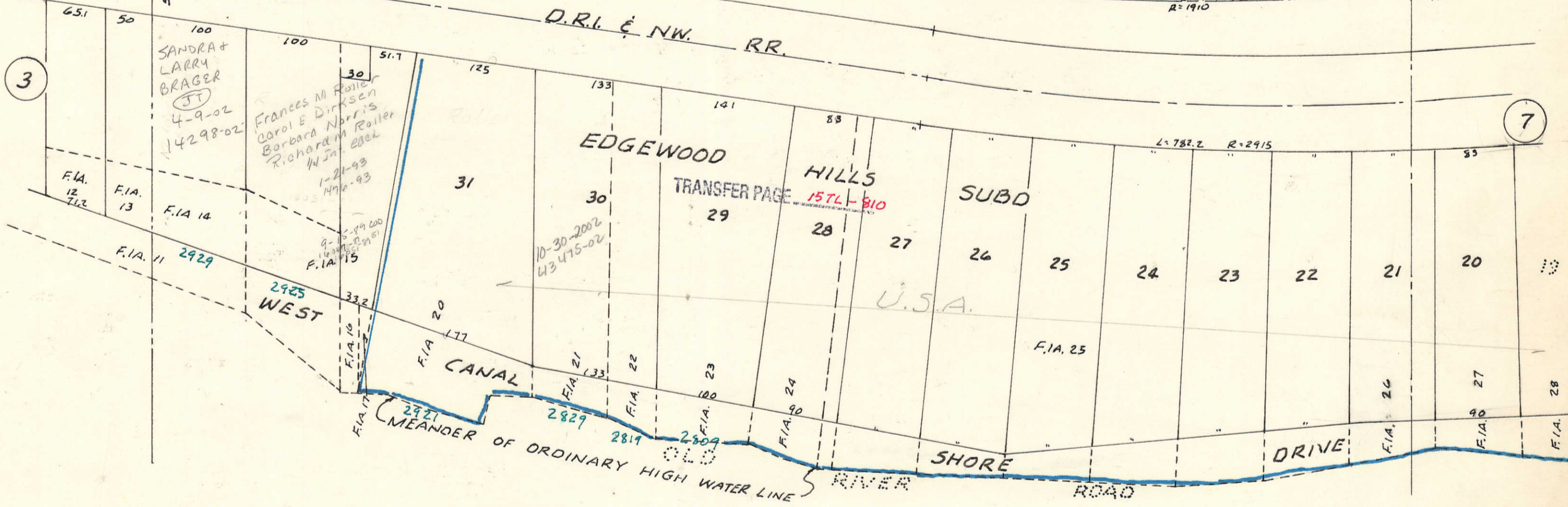
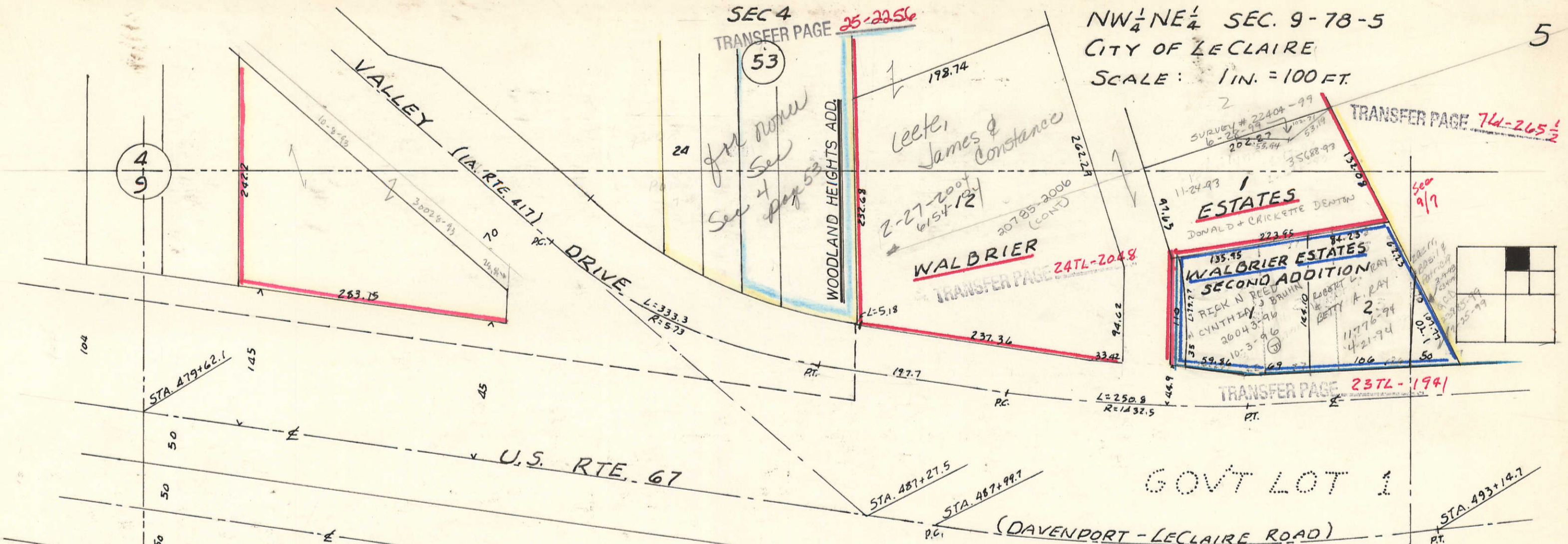
53

TRANSFER PAGE 74-265 1/2

ESTATES
DONALD + CRICKETTE DENTON

WALBRIER ESTATES
SECOND ADDITION

TRANSFER PAGE 237L-1941



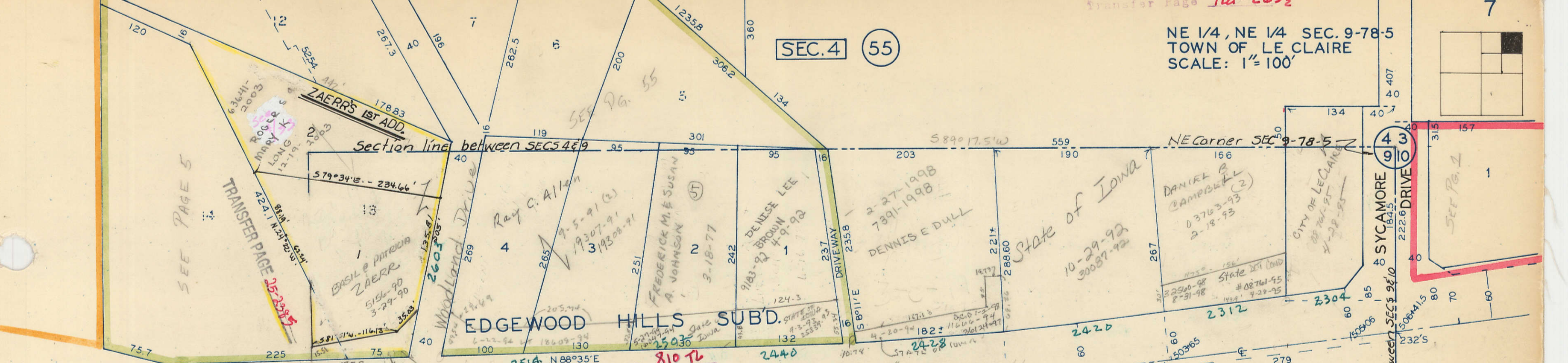
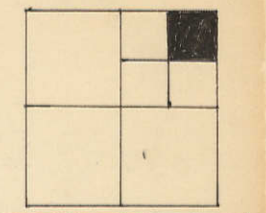
(LECLAIRE CANAL)
MISSISSIPPI RIVER

+

+

NE 1/4, NE 1/4 SEC. 9-78-5
TOWN OF LE CLAIRE
SCALE: 1" = 100'

SEC. 4 (55)



EDGEWOOD HILLS SUBD.

HWY. 417

DAY-LE CLAIRE ROAD

U.S. HWY. 67

SEC. 10

(5)

GOVT. LOT 1

D.R.I. & NW RR.

Transfer Page 810 TL

EDGEWOOD HILLS SUB'D.

RIVER

READING RESERVE

ACCESS ROAD
SHORE DR.

(LE CLAIRE CANAL)

MISSISSIPPI RIVER
← FLOW

