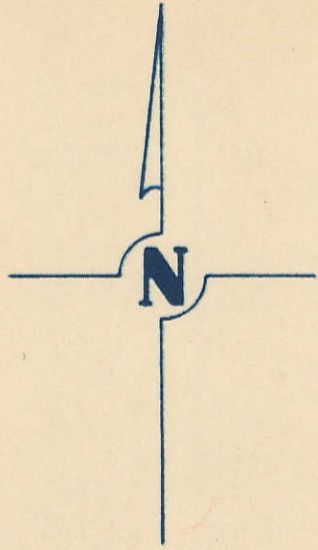


SECTION 21
TOWNSHIP 79 NORTH, RANGE 5 EAST,
5TH PRINCIPAL MERIDIAN
LE CLAIRE TOWNSHIP
SCOTT COUNTY, IOWA



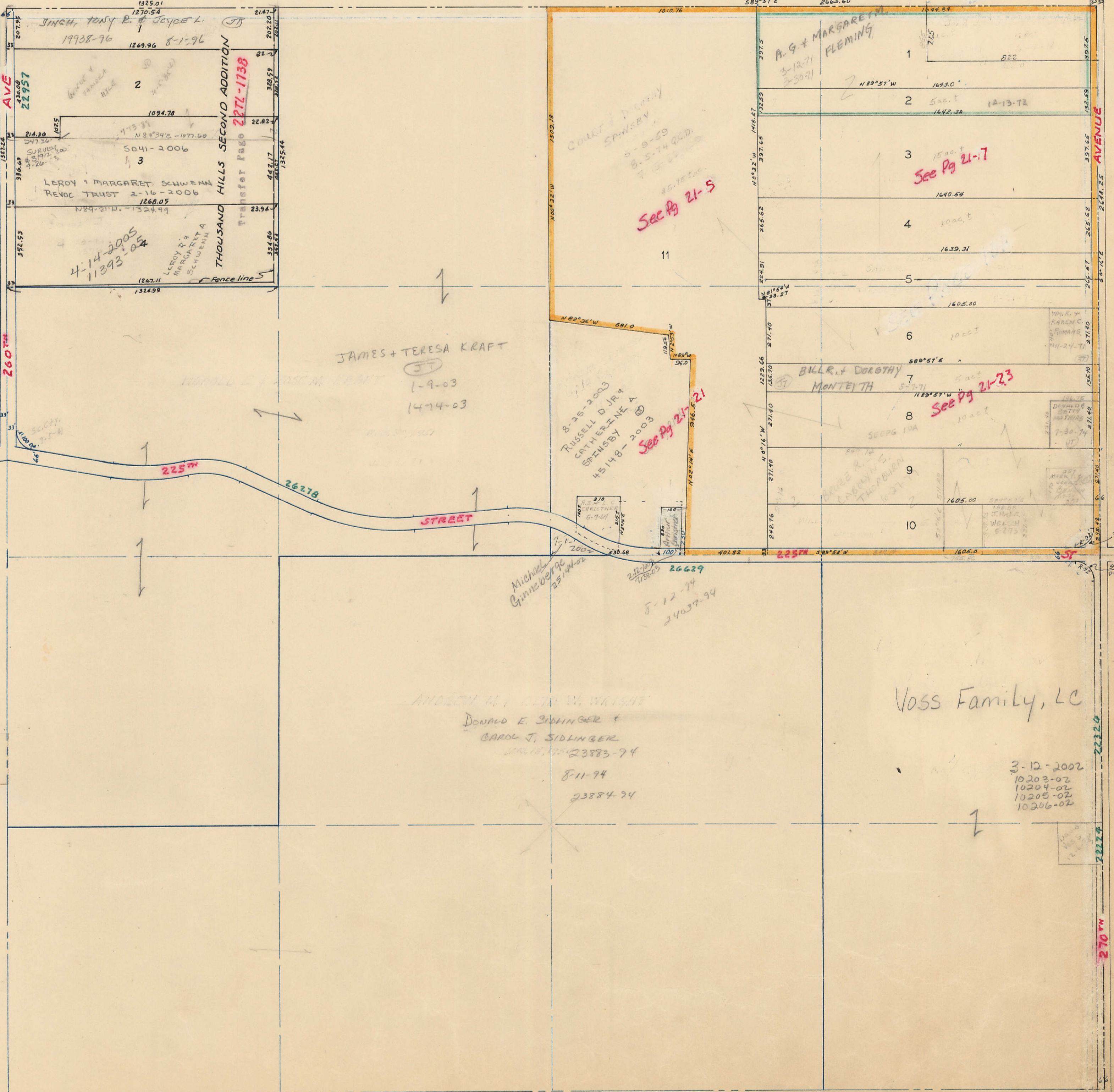
SCALE: 1 INCH = 330 FEET

SECTION 16 PAGE 16

TRANSFER PAGE 273

COUNTRY ESTATES FIRST ADDITION

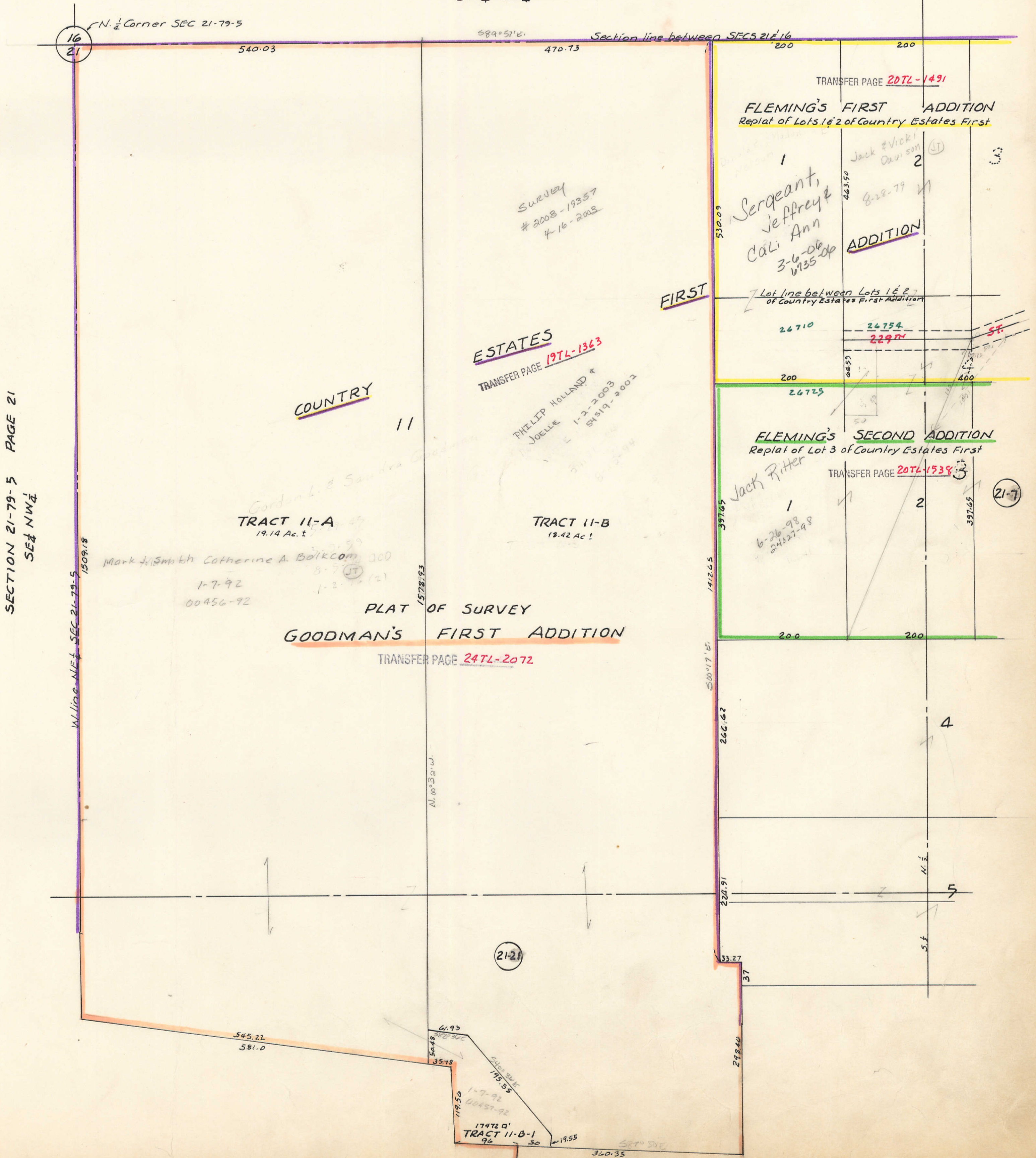
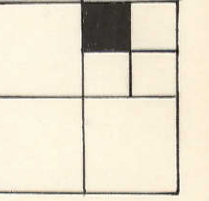
Transfer Page 1363 72.



NW 1/4 NE 1/4 SEC 21-79-5
LECLAIRE TOWNSHIP
SCALE: 1" = 100'

TRANSFER PAGE 71ds - 273

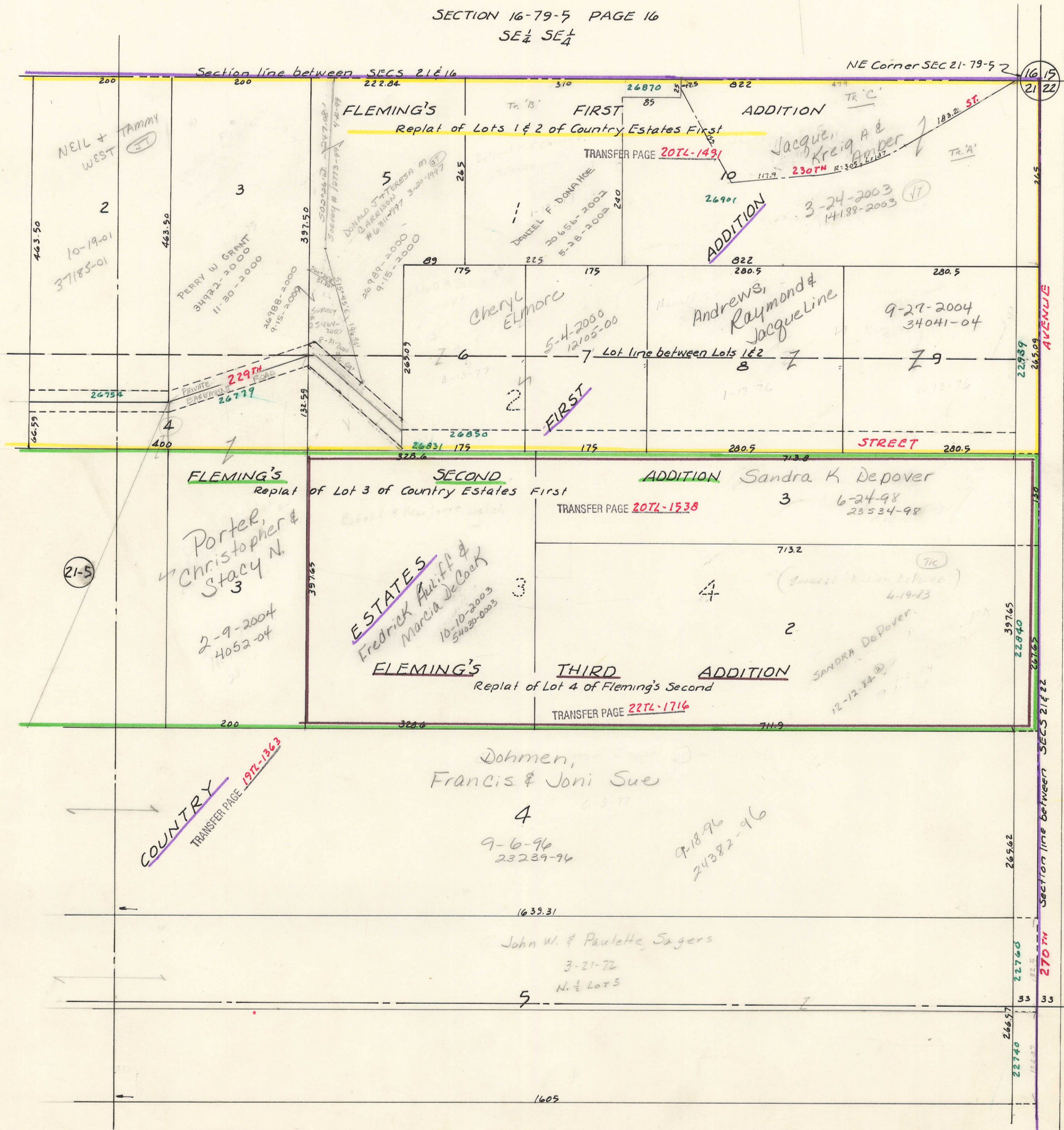
SECTION 16-79-5 PAGE 16
SW 1/4 SW 1/4



NE 1/4 NE 1/4 SEC 21-79-5
LECLAIRE TOWNSHIP
SCALE: 1"=100'

TRANSFER PAGE 71ds-273

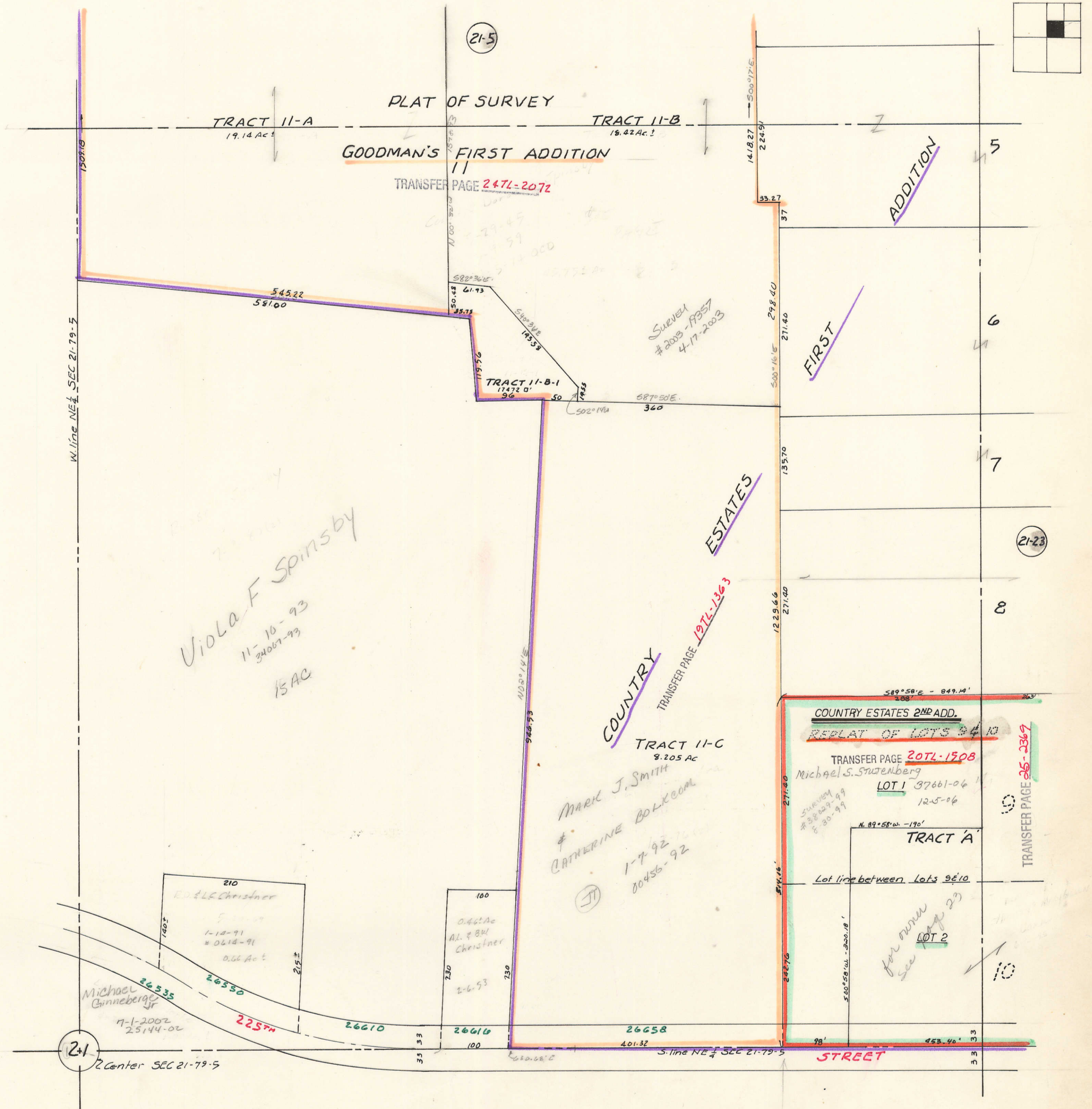
SECTION 16-79-5 PAGE 16
SE 1/4 SE 1/4



SECTION 22-79-5 PAGE 22
NW 1/4 NW 1/4

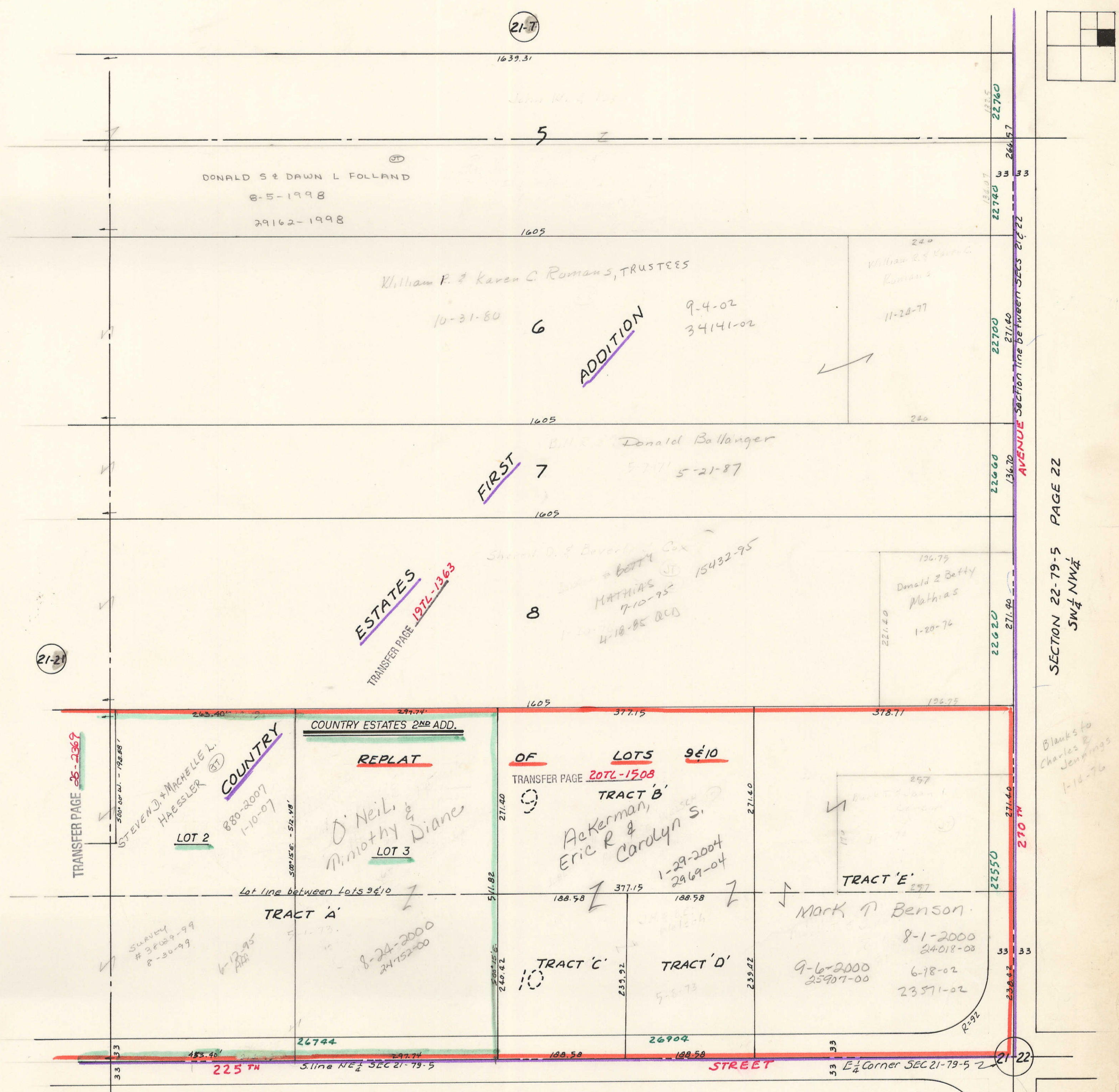
SW 1/4 NE 1/4 SEC 21-79-5
LECLAIRE TOWNSHIP
SCALE: 1"=100'

TRANSFER PAGE 71ds-273



SE 1/4 NE 1/4 SEC 21-79-5
LECLAIRE TOWNSHIP
SCALE: 1" = 100'

TRANSFER PAGE 765-273



21-7

21-21

SECTION 22-79-5 PAGE 22
SW 1/4 NW 1/4

Blanks to Charles B Jennings 1-18-76

SECTION 21-79-5 PAGE 21
NE 1/4 SE 1/4