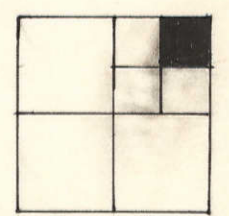


LECLAIRE TWP.
SEC. 32

WILLIAM SCHURR TRUST
LOIS SCHURR TRUST
31701-93



LECLAIRE TWP.

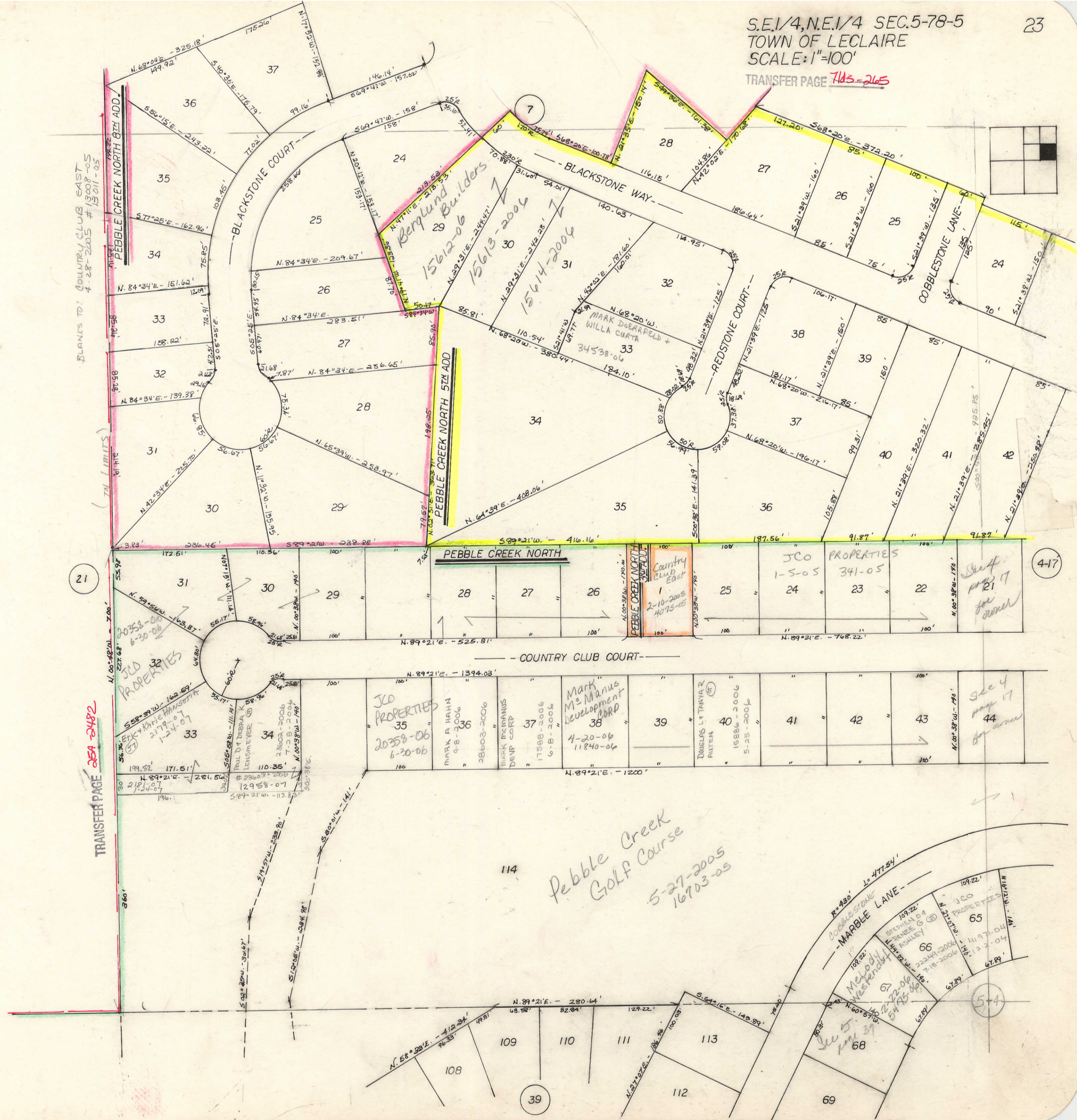
BLANKS TO:
Courtney Club
East LLC
10/19/2008
35 142-2008
35193-08

OUTLOT A

4-1

SEC. 5-78-5

TRANSFER PAGE 7145-265



BLANKS TO: COUNTRY CLUB EAST
15008-05
4-28-2005 # 15011-05

T.M. LIMITS

TRANSFER PAGE 264-2482

Berlund Builders
15612-06
15613-2004
15614-2004

Country Club East
2-10-2005
4-7-05

JCO PROPERTIES
1-5-05
341-05

Pebble Creek Golf Course
5-27-2005
16703-05

See 4
page 17
for owner

See 4
page 17
for owner

See 5
page 39

4-17

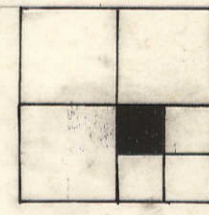
5-4

21



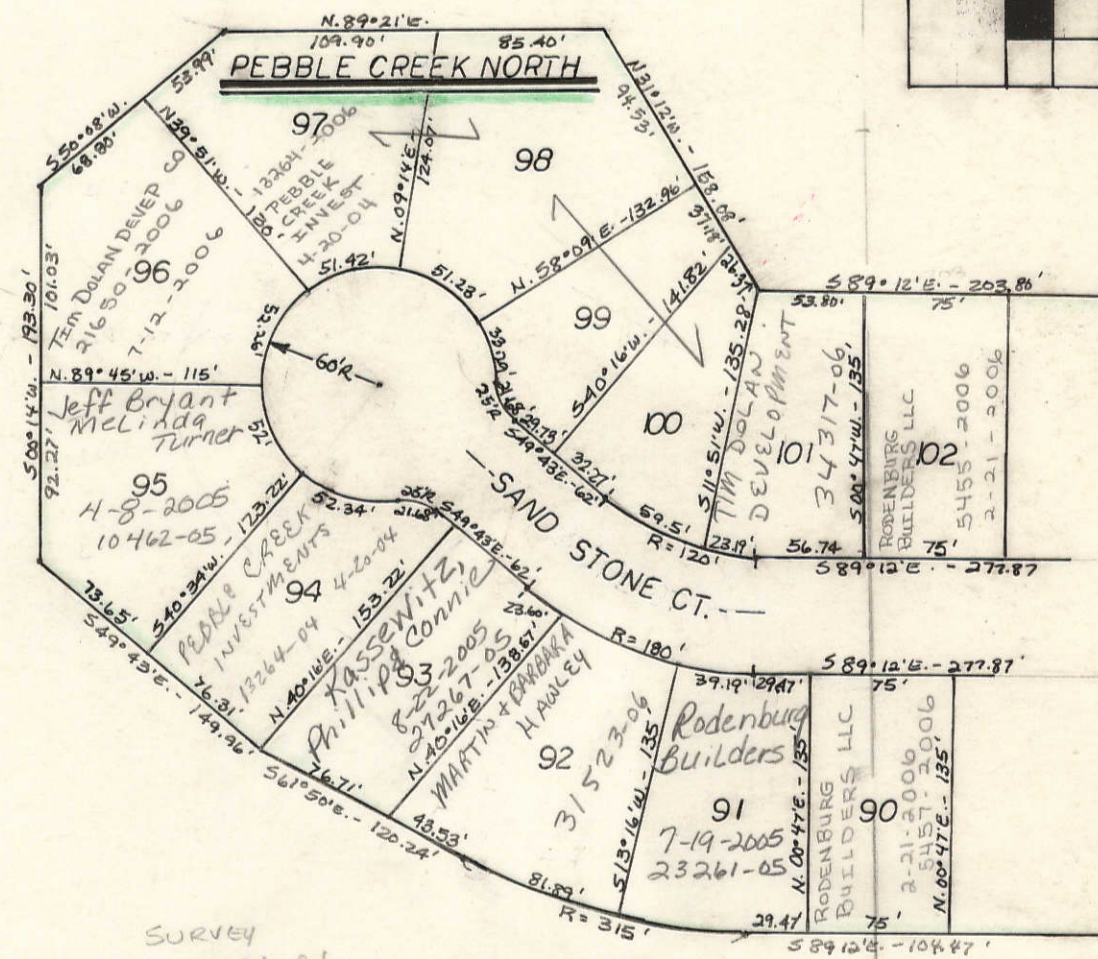
TN LIMITS OF LECLAIRE

589°21'W - 1344.95'



Pebble Creek Golf Course

5-27-2005
16703-05



P.V. SEC. 5
Twp 5

35

Survey # 18626-2002
5-6-2002
BETH S. ROLLER
1-11-02 1856-02

25600

CORP. LIMITS (4-9-03)

SEE TWP BOOK
DAVENPORT COUNTRY CLUB
1-21-41

PEBBLE CREEK SOUTH

FOREST GROVE ROAD

PEBBLE CREEK DR.

PEBBLE CREEK CIRCLE

Michael D. Murphy
23
2-7-2006
3826-06

THANSON H. IRENE A. HARB
532-2007
1-8-07

53

BLANKS TO:
JCO PROPERTIES
1-19-04 1827-04

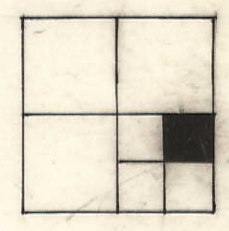
TRANSFER PAGE 20A 2483

39

TRANSFER PAGE 25A-2482

TRANSFER PAGE 254-2482

23



See page 3
See 5 for
owner

37

Top owners
See page 5
page 37

For owner
See page 55

TRANSFER PAGE 254-2483

55

Pebble Creek
Golf Course

115
5-27-2005
16703-05

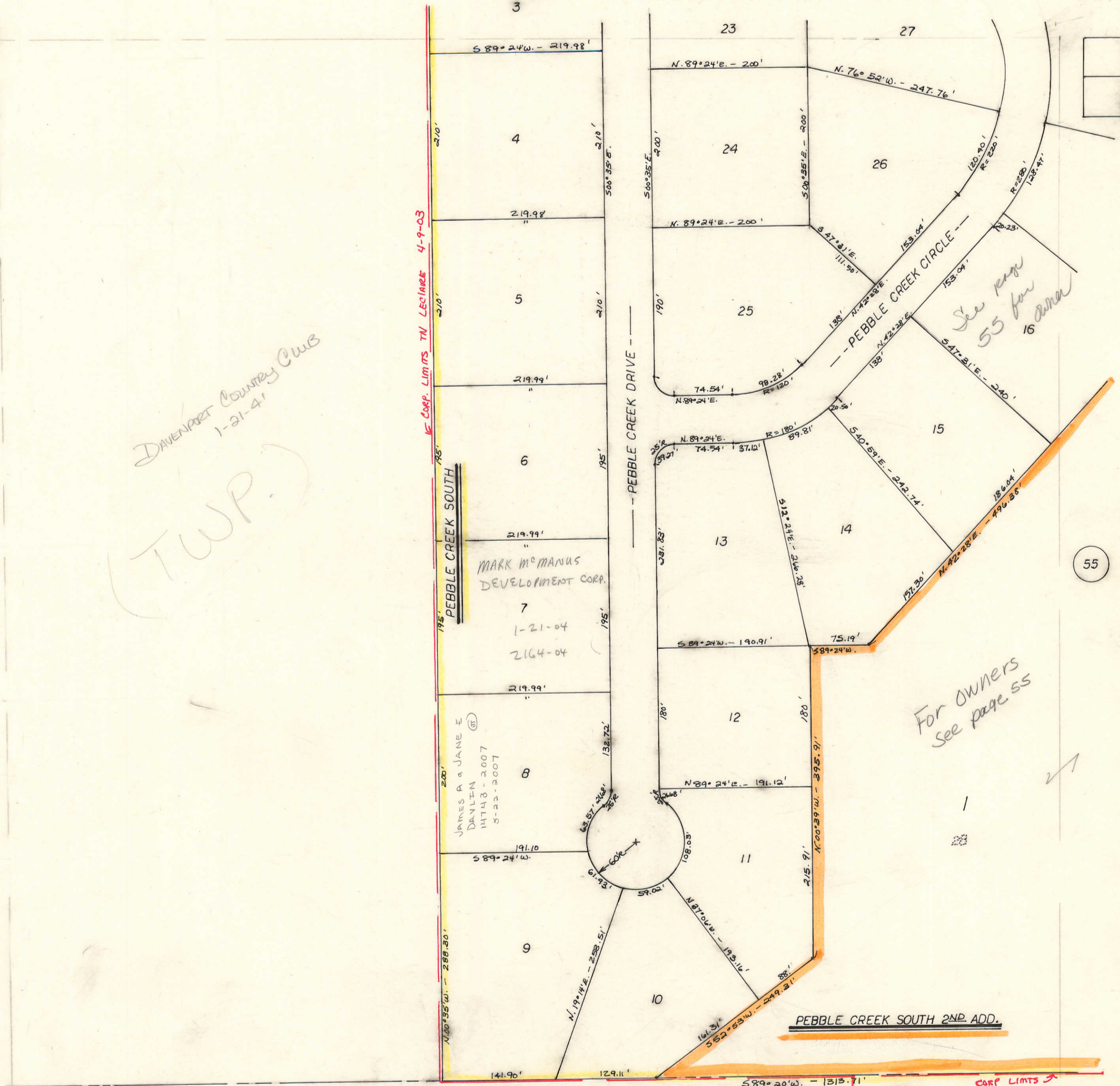
4-33

TRANSFER PAGE

TRANSFER PAGE 71ds-265

37

3



DAVENPORT COUNTY CUBS
 1-21-04

(TWP.)

CORP. LIMITS TOWNSHIP LECLAIRE 4-9-03

PEBBLE CREEK SOUTH

PEBBLE CREEK DRIVE

PEBBLE CREEK SOUTH 2ND ADD.

See page 55 for area

For owners see page 55

MARK McMANUS DEVELOPMENT CORP.

JAMES A & JANE E DANLON 14743-2007 8-22-2007

TRANSFER PAGE 254-2483

BLANKS TO:
 JCO PROPERTIES
 1-19-04 1827-04

CORP LIMITS TOWNSHIP LECLAIRE

51

55

8-5

