

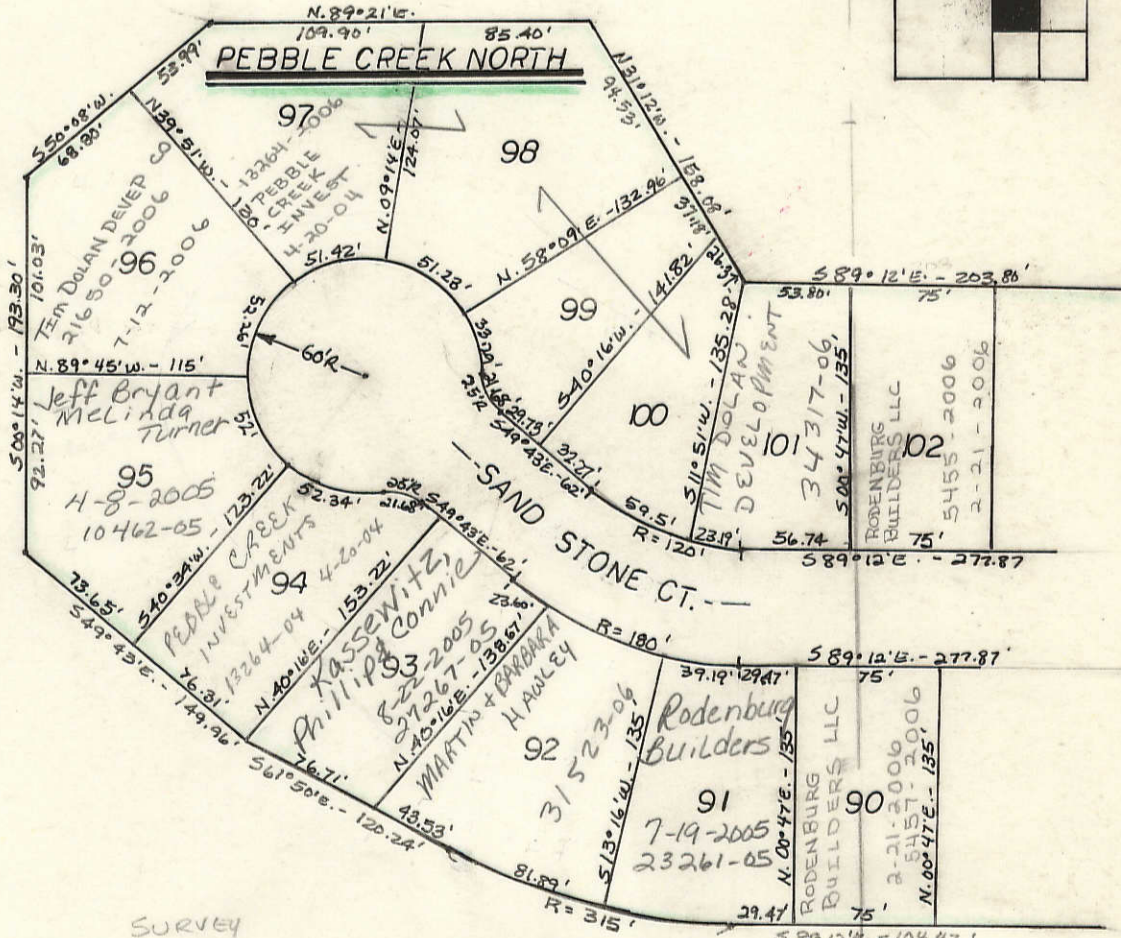
21



TH LIMITS OF LECLAIRE

Pebble Creek Golf Course

5-27-2005
16703-05



P.V. SEC. 5
Twp

35

Survey # 18026-2002
5-6-2002
BETH S. ROLLER
1-11-02 1856-02

25600

CORP. LIMITS (4-9-03)

SEE TWP BOOK
DAVENPORT COUNTRY CLUB
1-21-41

PEBBLE CREEK SOUTH

FOREST GROVE ROAD

PEBBLE CREEK CIRCLE

Michael D. Murphy
23
2-7-2006
3826-06

THASOUB H. IRENE A. HARRIS
19
3-2-2007
1-8-07

39

TRANSFER PAGE 254-2482

53

TRANSFER PAGE 254-2483

BLANKS TO:
JCO PROPERTIES
1-19-04 1827-04