

NW 1/4, NW 1/4 SEC. 9-78-5  
TOWN OF LE CLAIRE  
SCALE: 1" = 100'

SERGEANT'S RIVER VIEW

SERGEANT'S THIRD RIVERVIEW ADD.

SEC. 4

(49)

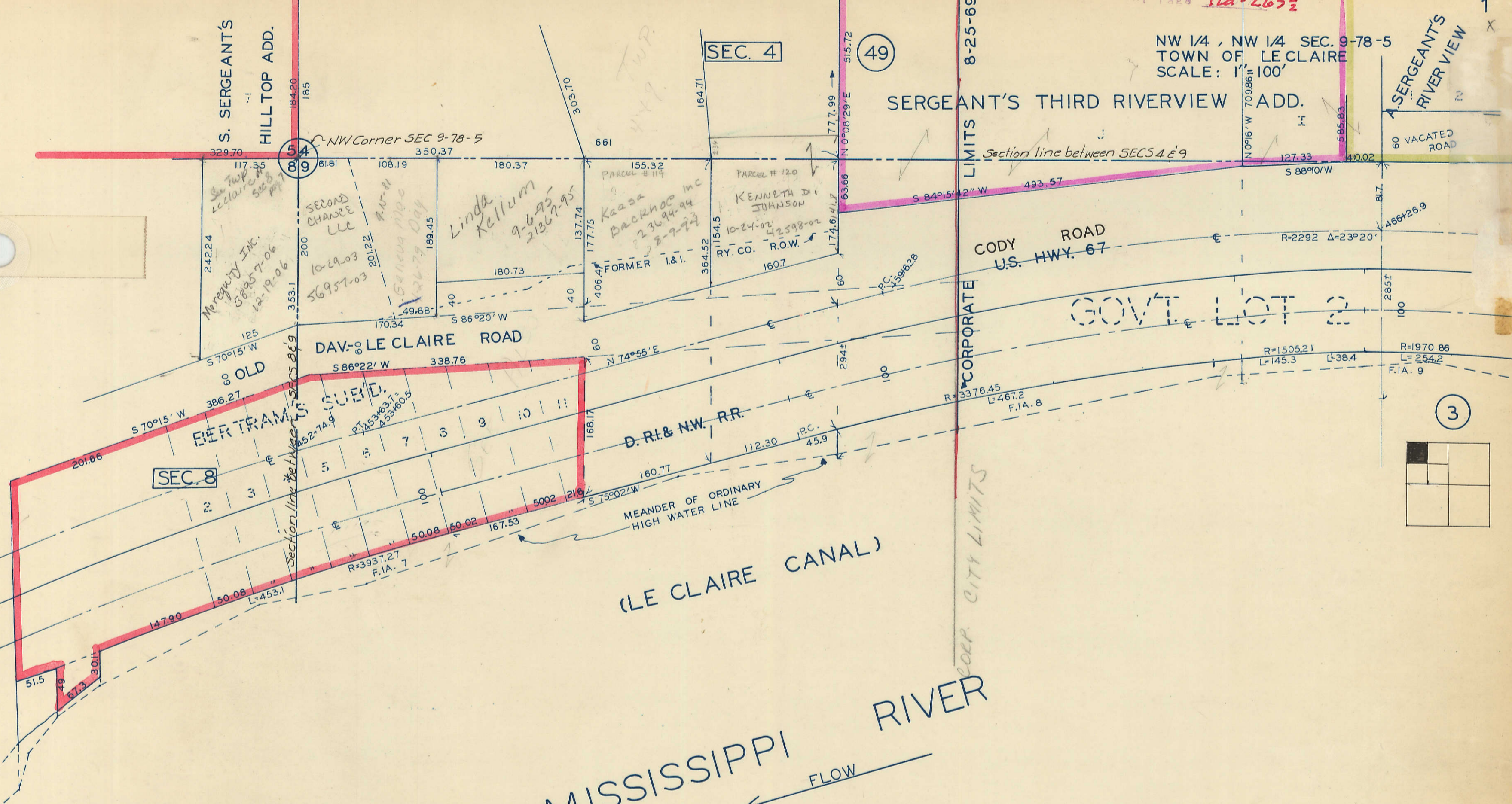
S. SERGEANT'S  
HILLTOP ADD.

8-25-69-  
LIMITS

CODY ROAD  
U.S. HWY. 67

GOVT. LOT 2

(3)



SMITH'S ISLAND

8-17-40  
10-6-36