

CLEONA TOWNSHIP

SW 1/4 SECTION 31-79-1
P.M. CONTAINING
THE CITY OF DURANT
SCOTT COUNTY

VILLAGE EAST 2ND ADDITION

THE FIFTH PRINCIPAL MERIDIAN

R-1-W
R-1-E

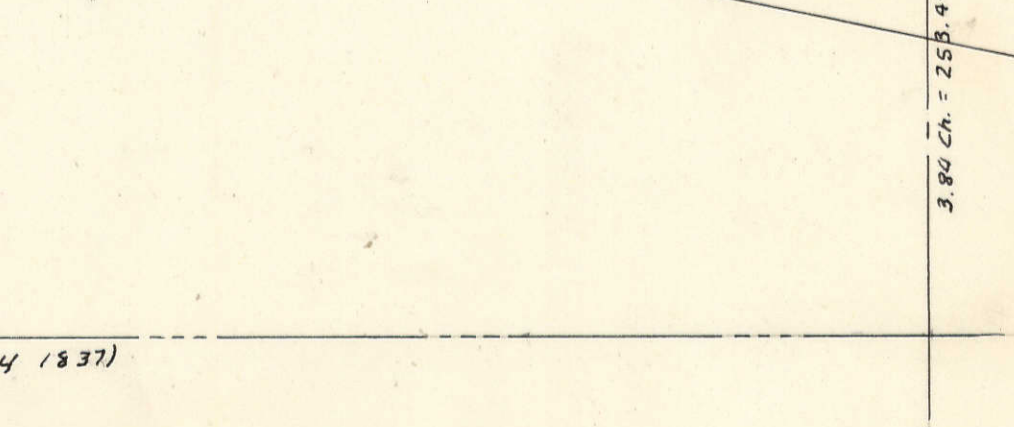
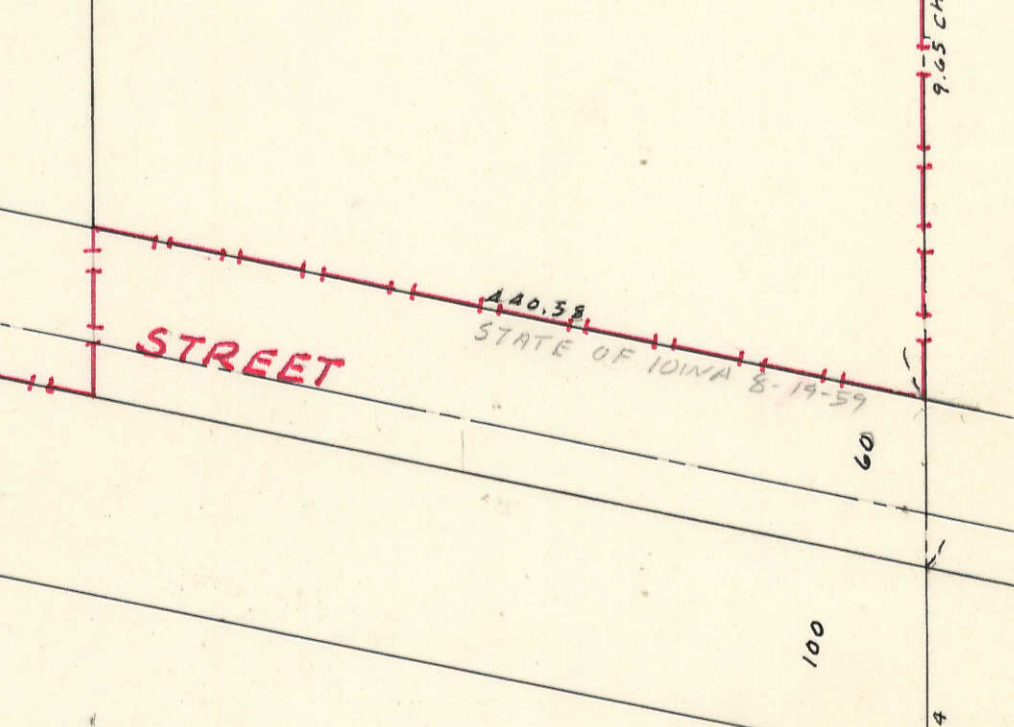
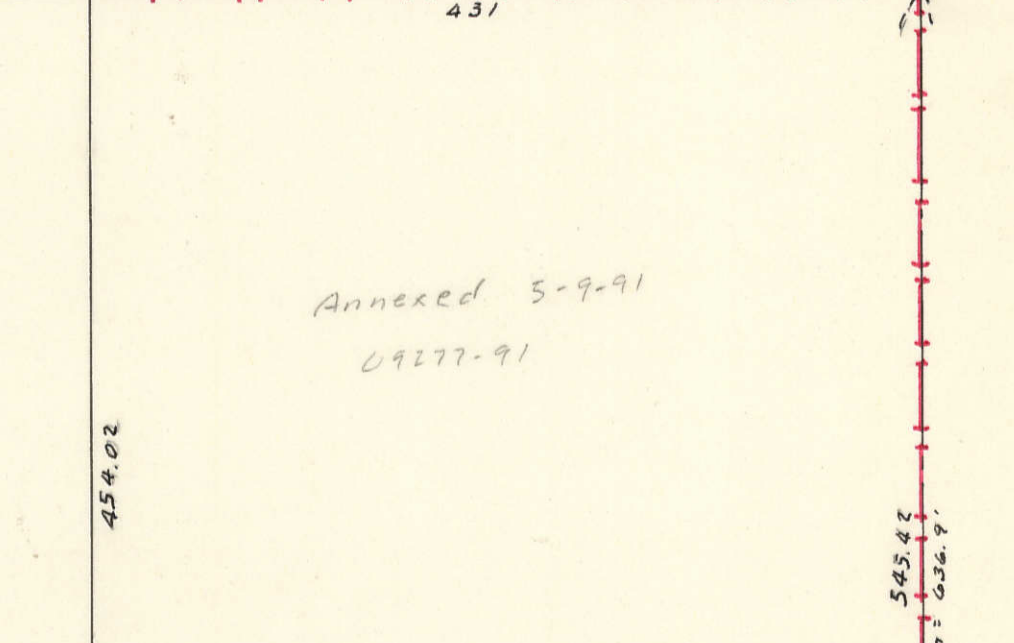
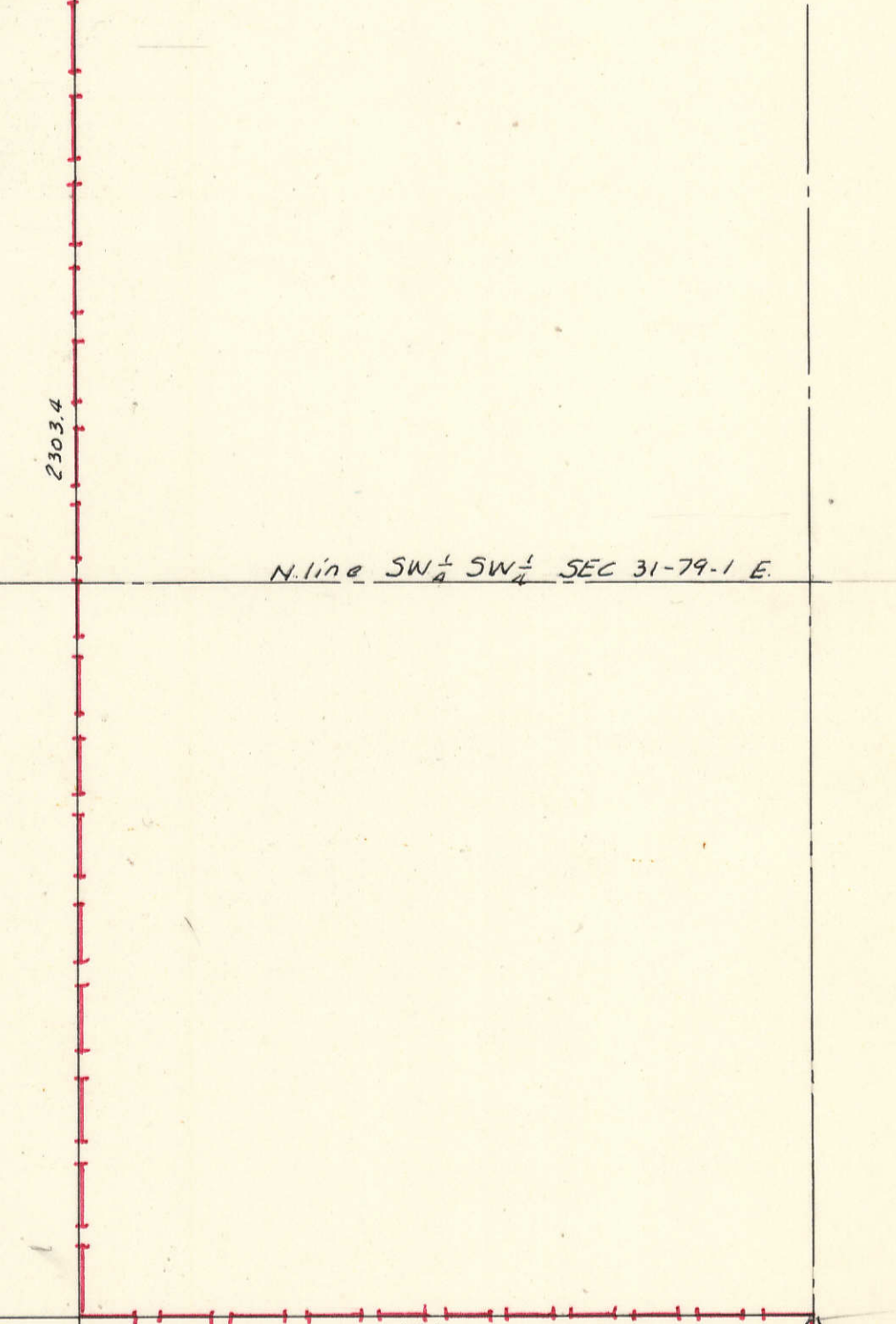
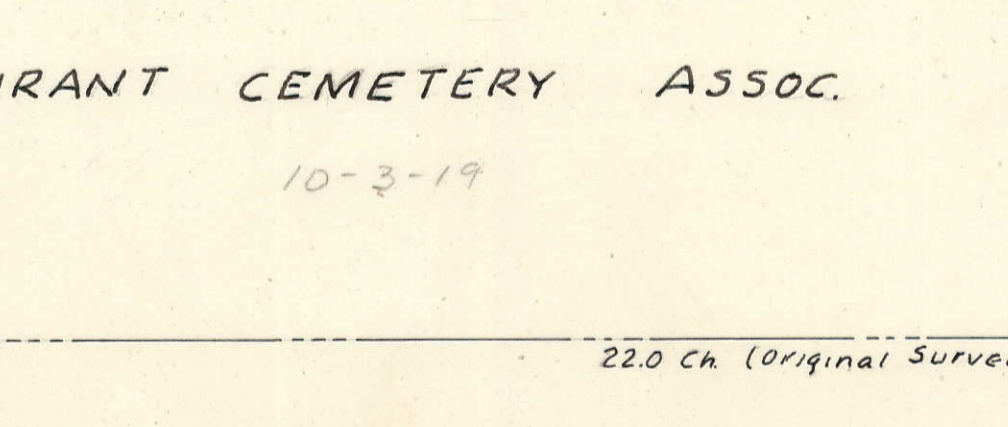
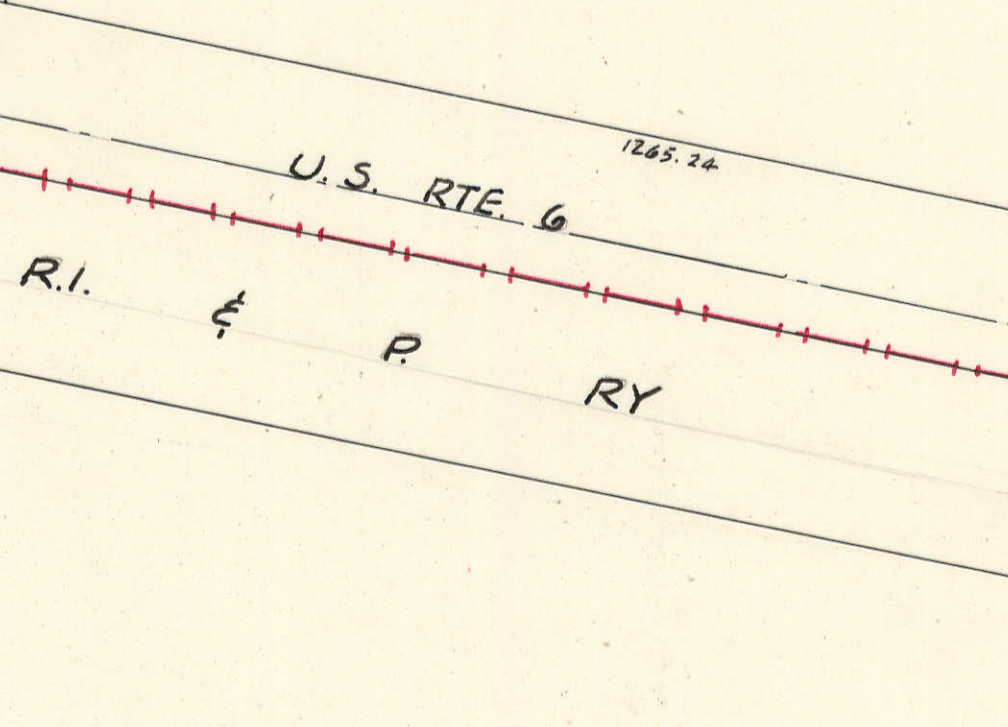
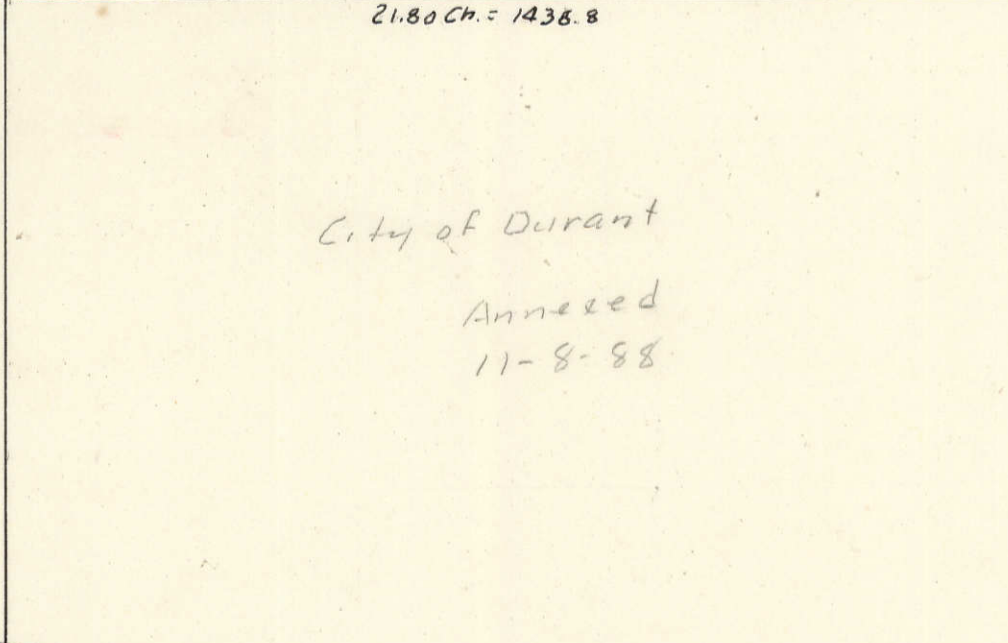
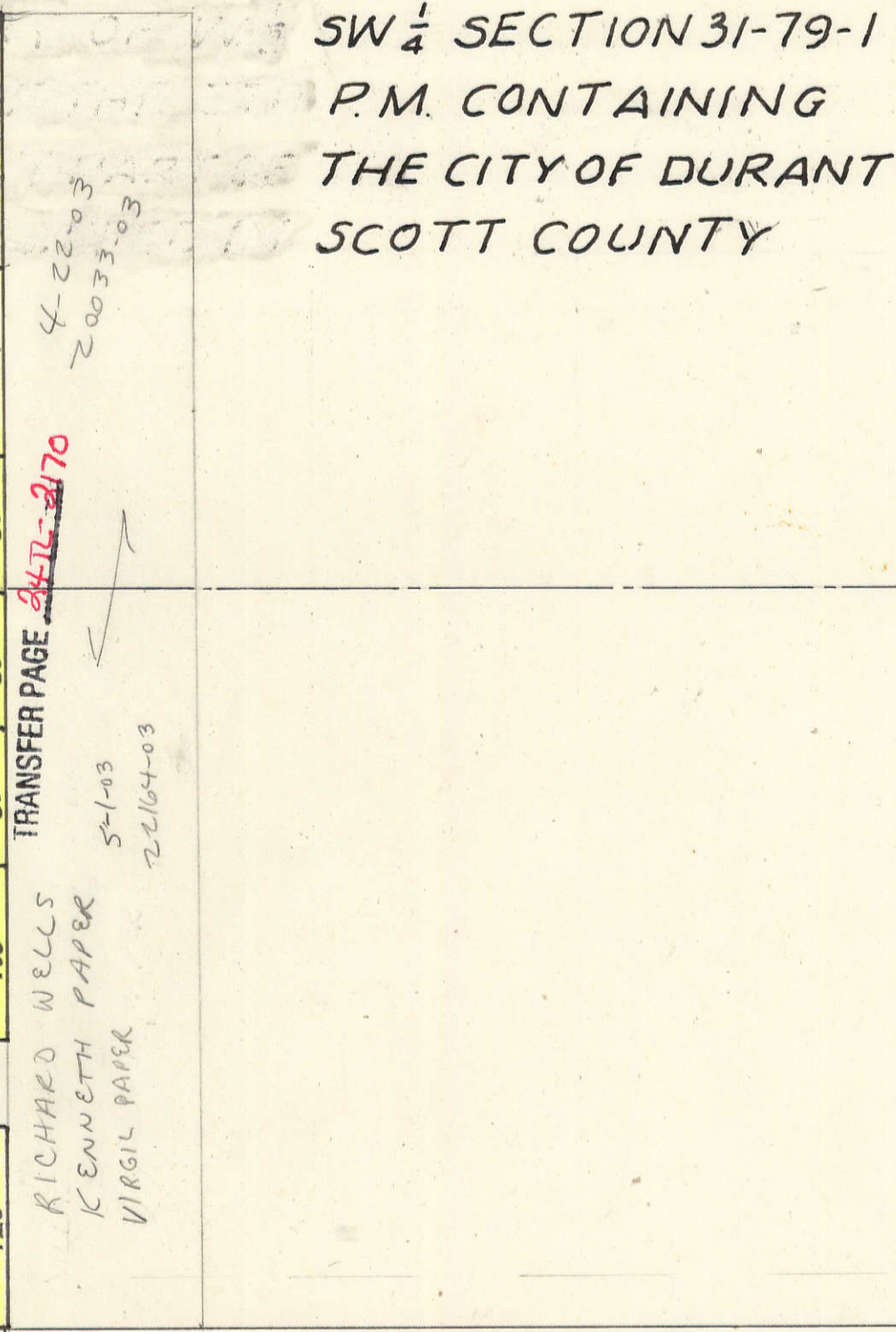
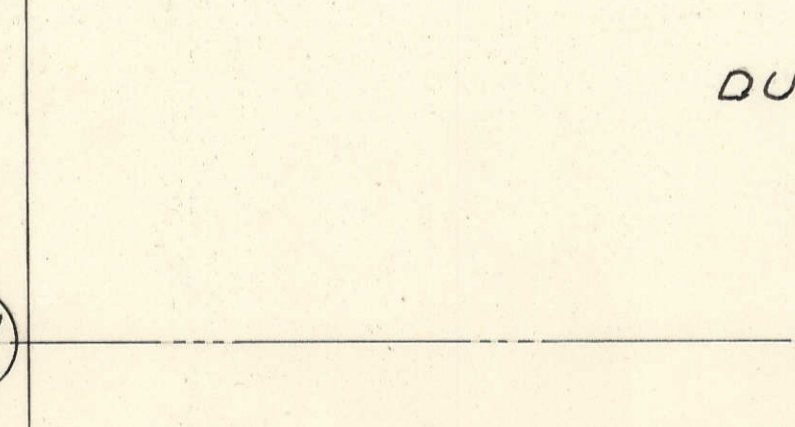
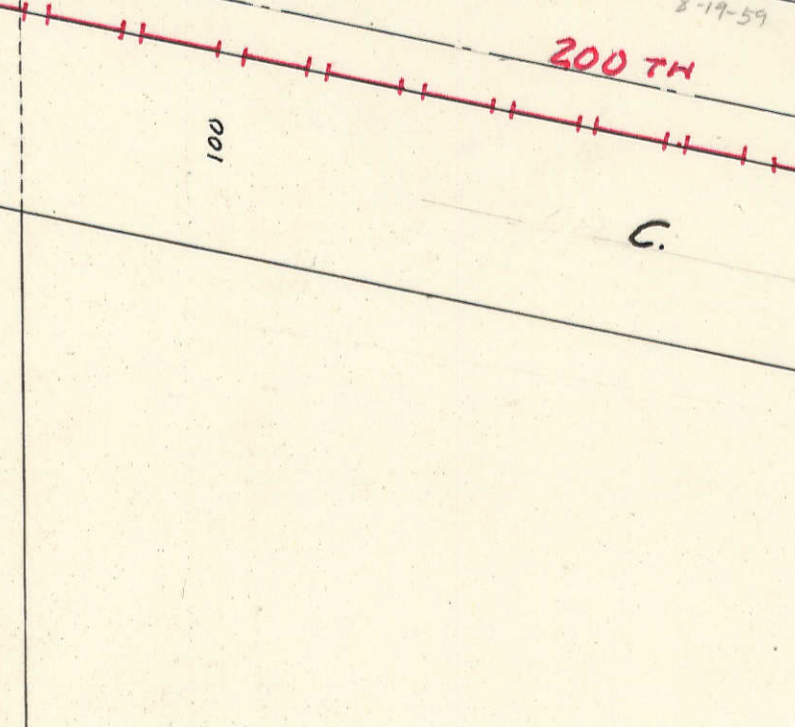
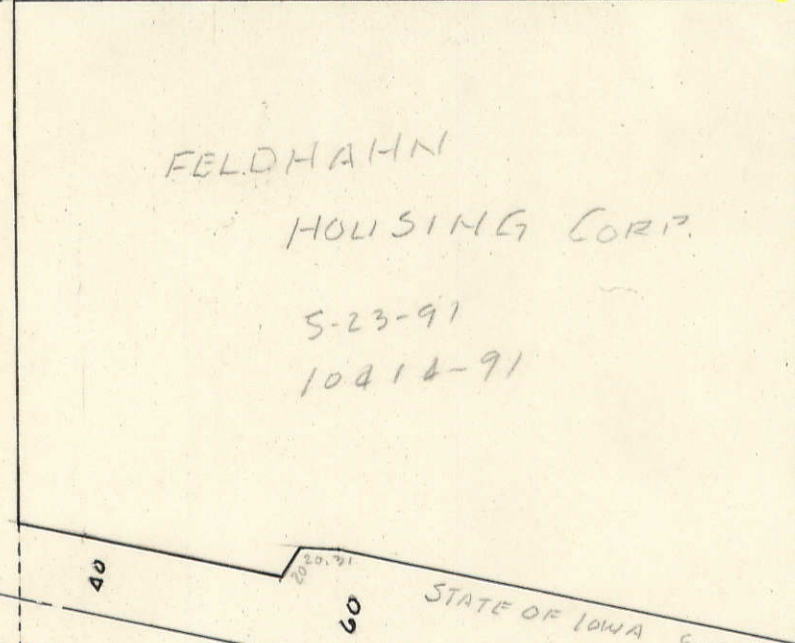
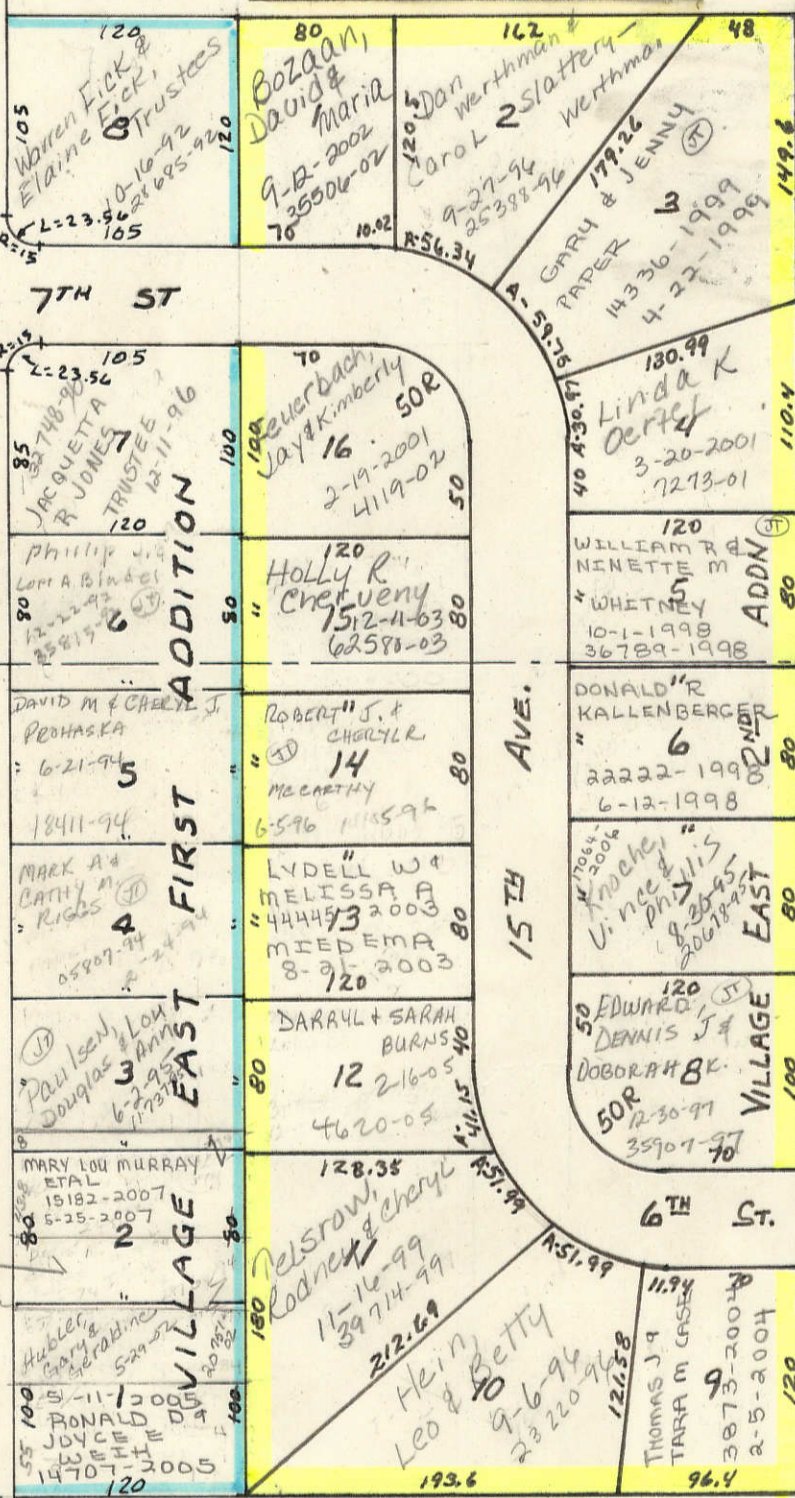
TRANSFER PAGE 247L-2100

VERNON F LOES
SCHLAPKOHL
3070-2004
1-29-2004

AVENUE

1ST

R-1-W
R-1-E



N line SW 1/4 SW 1/4 SEC 31-79-1 E.

21.80 Ch. = 1438.8

431

454.02

545.47
9.05 Ch = 636.7

100

3.80 Ch = 255.44